

Indices of soil contamination by heavy metals – methodology of calculation for pollution assessment (minireview)

Helena Doležalová Weissmannová  · Jiří Pavlovský

Received: 17 July 2017 / Accepted: 26 October 2017
© Springer International Publishing AG, part of Springer Nature 2017

Abstract This article provides the assessment of heavy metal soil pollution with using the calculation of various pollution indices and contains also summarization of the sources of heavy metal soil pollution. Twenty described indices of the assessment of soil pollution consist of two groups: single indices and total complex indices of pollution or contamination with relevant classes of pollution. This minireview provides also the classification of pollution indices in terms of the complex assessment of soil quality. In addition, based on the comparison of metal concentrations in soil-selected sites of the world and used indices of pollution or contamination in soils, the concentration of heavy metal in contaminated soils varied widely, and pollution indices confirmed the significant contribution of soil pollution from anthropogenic activities mainly in urban and industrial areas.

Keywords Heavy metals · Soils · Sources of pollution · Single indices · Total complex indices

Introduction

Currently, soil pollution by heavy metals represents one among the foremost necessary environmental issues. According to numerous scientific environmental studies, heavy metals are regarded as potentially harmful substances released from anthropogenic activity exhibiting the risk to surrounding environment and to human health. The growing contamination by heavy metals in environmental components leads to an increase in global risk to human and ecological health; soil contamination by toxic and dangerous compounds result in the degradation or loss of some soil functions globally. A close interaction to other environmental compartments (water and atmosphere) leads to a negative influence on soils due to anthropogenic activity. The generalized mobilization and dispersion of pollutants from their natural reservoirs to the atmosphere, soil, and water is one of the most significant negative impacts of human activities on terrestrial and aquatic ecosystem (Wang and Qin 2007; Driscoll et al. 2013; Karimi Nezhad et al. 2014; Zhao et al. 2014; Wang et al. 2015a, 2015c; Hou et al. 2017). Heavy metals are accumulated in soils mainly due to dry and wet atmospheric deposition from various sources; the main and most important origin of heavy metals is related to industrial emissions (chemistry, mining, iron and steel industry, metallurgy, building and electronics industry, etc.), fuel combustion, and waste management and transport (automobile traffic, a fuel composition, road types, types of

H. D. Weissmannová (✉)
Faculty of Chemistry, Brno University of Technology, Brno,
Czech Republic
e-mail: dolezalova@fch.vutbr.cz

J. Pavlovský
Faculty of Metallurgy and Materials Engineering, VŠB-Technical
University of Ostrava, Ostrava, Czech Republic

the engine, and drive mode). The growing waste production of various potentially hazardous materials, such as domestic or industrial wastes, incineration wastes, use of fertilizers and agrochemicals, etc., contributes to pollution of urban soils and causes in growing heavy metal amount in soils (Guillén et al. 2011; Pastor and Hernández 2012; Wang et al. 2012; Hu et al. 2013; Cheng et al. 2014; Gonçalves et al. 2014; Teng et al. 2014; Werkenthin et al. 2014; Li et al. 2015a; Soliman et al. 2015; Wu et al. 2015a, 2015b; Gu et al. 2016). The increasing population density and the corresponding increase in the number of vehicles result in significant negative impact on the urban environment (Wong et al. 2006; Lu and Bai 2010; Wei and Yang 2010; Al Obaidy and Al Mashhadi 2013; Werkenthin et al. 2014; Li et al. 2015a, 2015b). A huge proportion of soils in industrialized countries contain higher levels of many dangerous and toxic elements and compounds that are considered hazardous pollutants and their background values are above those in corresponding undisturbed areas (Hijmans et al. 2005; Hu et al. 2013). The soils with unique properties and structure act as a filter and a deposition site for heavy metals and others toxic substances. The input of heavy metals from anthropogenic activities generally includes: As, Cd, Cr (only Cr (VI) is toxic), Cu, Hg, Ni, Pb, and Zn. Unfortunately, heavy metal pollution is practically almost irreversible (Lado et al. 2008; Liang et al. 2011; Wuana and Okieimen 2011; Teng et al. 2014; Wu et al. 2015a, 2015b; Streets et al. 2017). The geology, the geographical characteristics, and local climate are considered the main natural factors of heavy metal dispersion environment. Generally, that increased density of population, intense industrialization, and excessive exploitation of natural resources result in negative impacts on the structures and functions of the whole ecosystem and environment (Zahida et al. 2014). Heavy metals can be transferred into the human body as a consequence of dermal contact, inhalation, and ingestion (Lim et al. 2008; Ji et al. 2008, 2013; Varrica et al. 2014). Much heavy metal accumulates in organisms due to their long biological half-lives of elimination and non-biodegradability. It is widely known that presence toxic heavy metals in soils have adverse effects on human health, especially on children (Ljung et al. 2006a, 2006b; Poggio et al. 2009; Varrica et al. 2014). The objectives of this review were: (1) soil pollution/contamination by heavy metals was analyzed and pollution sources were summarized, (2) 20 different indices of heavy metal pollution were

reviewed, (3) indices were classified into single indices and total complex indices of pollution/contamination, and (4) minireview provides also the classification of pollution indices in terms of the complex assessment of soil quality.

Heavy metals in soils

Inputs of heavy metals into environment include atmospheric deposition from industrial areas, dumping and treatment of wastes, commercial fertilizers, using sewage sludges, and other processes originated from degradation of various materials (He et al. 2005a, 2005b; Skordas and Kelepertsis 2005; Biasioli et al. 2006; Han et al. 2006; Wong et al. 2006; Barkouch et al. 2007; Oliva and Espinosa 2007; Zhang et al. 2016, 2017). The amounts of heavy metals in soils are different and worldwide average concentrations fluctuate, for example, Cu (20 mg kg^{-1}), Cd (0.06 mg kg^{-1}), Cr ($20\text{--}200 \text{ mg kg}^{-1}$), Pb ($10\text{--}150 \text{ mg kg}^{-1}$), Ni (40 mg kg^{-1}), and Zn ($10\text{--}300 \text{ mg kg}^{-1}$). But the containing of heavy metals in metal-rich soils can attain at 10–1000 times greater concentrations via basic parent materials or pollution (He et al. 2005a, 2005b). The hazardous metals in soils, such as As, Cd, Cr, Cu, Hg, Pb, and Zn are considered the most contamination metals in soils, and their basic properties are non-degradability, persistence, bioaccumulation, and biomagnification in a food chain. The chemical forms and metal speciation are important factors for the fate and transport of heavy metals in soils. The first process with various rates, from minutes to days or years is adsorption and after that heavy metals are redistributed into different chemical forms with various bioavailability, mobility, and toxicity. The final equilibrium state of redistributing heavy metals between the solid and liquid phase in soil is influenced many chemical and biochemical processes (Kabata-Pendias 2011). The processes precipitation–dissolution, adsorption–desorption, complexation–dissociation, and oxidation–reduction control the metal mobility and availability whereas only a small portion of metals in soil is bioavailable (Yang et al. 2004; He et al. 2005a, 2005b). The bioavailability of metal and its compounds is also affected by physical factors (pH level, temperature, association of phases, adsorption, composition, and quality of soil solution) and chemical factors (speciation at thermodynamic equilibrium, redox potential, complexation kinetics, cation exchange

capacity, ions competition, lipid solubility, and octanol/water partition coefficients). Biological factors are significant for metal bioavailability, i.e., type and sort of species, trophic interactions, and biochemical/physiological adaptation (Skordas and Kelepertsis 2005; Barkouch et al. 2007; Oliva and Espinosa 2007; Kabata-Pendias 2011; Zhao et al. 2013, 2014). As a consequence of rapidly growing amounts of heavy metals in soils, their its accumulation, the contaminated soils become unavailable for plant growing crop cultivation, and the quality of soils change in terms of biodiversity, water cycles, a microclimate of an area, which results to facilitating floods and erosion. Thus, pollution of soil can change the whole ecosystems. The transfer of metals from soils via food chain or atmospheric deposition can cause the typical chronic effect, where the most serious toxic effect with delayed toxic response is related to mutagenicity and carcinogenicity. Mutagenesis and carcinogenesis very often occur after chronic exposure by some of the heavy metals. The specific characteristics and physical–chemical properties of each metal affected its toxicological profiles and its toxicological mode of action (WHO/FAO/IAEA 1996; Damek-Poprawa and Sawicka-Kapusta 2003; Türkdoğan et al. 2003; Islam et al. 2007; Kibble and Russell 2010; Kabata-Pendias 2011; Brevik and Burgess 2012; Morgan 2012).

Sources of heavy metals in soils

Metals are naturally occurring elements that are found throughout the earth’s crust; however, anthropogenic activities are the main proportion of environmental contamination, human exposure, disturbance in metal geochemical cycles, and metal accumulation over background levels (Table 1). The presence of metals (Cu, Zn, Fe, Mn, Co, Ni, Pb, Cd, Cr, As, Hg) has been often extensively monitored in environment (Rudnick and Gao 2003). The soil contamination can be classified to the three groups: (i) contamination via industrial processes and solid wastes with major effect to contamination of surface soils and disturbances in soil profile, (ii) contamination due to urban and agricultural activities, and (iii) contamination with dominant impact on surface soils and underground soils (Kaasalainen and Yli-Halla 2003; Basta et al. 2005; He et al. 2005a, 2005b; Khan et al. 2008; Arruti et al. 2010; Sträter et al. 2010; Al Obaidy and Al Mashhadi 2013; Gao et al. 2013; Cheng et al. 2014; Wang et al. 2015a, 2015b; Wu et al. 2015a, 2015b; Liao et al. 2016). Summary of major negative impact of heavy metals on soils are listed in Table 2. The input of heavy metals due to human activities has increasing trend. Pollution caused by heavy metals is

Table 1 Background contents of heavy metals in continental crust and surface soils over the world (average, mg kg⁻¹)

Elements	Continental crust			Worldwide soils				Agricultural soils, Sweden Eriksson (2001) and FOREGS (2005)	US soils Kabata-Pendias (2011)	Soils, Europe FOREGS (2005) and Yaroshevsky (2006)
	Clemente et al. (2003) and Kabata-Pendias (2011)	Rudnik and Gao (2003)	Yaroshevsky (2006)	Kabata-Pendias (2011)	Adriano (2001)	Xie and Lu (2000)	Clemente et al. (2003)			
As	1.8	4.8	1.7	6.83	6.1	–	0.62	0.25	7.2	11.6
Cd	0.1	0.09	0.13	0.41	0.35	0.06	1.1	0.17	0.01–41	0.28
Cr	100	92	83	59.5	70	20–200	42	22	54	94.8
Co	10	17.3	18	11.3	–	–	6.9	7.1	9.1	10.4
Cu	55	28	47	38.9	30	20	14	17	25	17.3
Hg	0.07	0.05	0.08	0.07	0.03	0.03	0.1	0.043	0.09	0.061
Pb	15	17	16	27	35	10–150	25	18	19	32
Mo	1.5	1.1	1.1	1.1	–	–	1.8	0.58	0.97	0.94
Ni	20	47	58	29	50	40	18	13	19	37
Zn	70	67	83	70	90	10–300	62	65	60	68.1
V	135	97	90	129	–	–	60	69	80	68
Mn	900	–	1000	488	–	–	418	411	550	524

Table 2 Summary of heavy negative metal effects on soils

Agricultural effect
Reduction of soil fertility
Reduction of nitrogen fixation
Increased erosion factor
Increasing soil loss
Increase nutrient deficiency
Reduction of crop yields
Imbalance in the soil biota (flora, fauna, microorganism)
Decrease of soil biodiversity
Industrial effect
Transfer of dangerous chemicals
Ecological imbalance
Release of pollutant gases
Increased salinity
Urban effect
Clogging of the drains soil deposits
Flooding areas
Health problems
Contamination of drinking water sources
Problems of waste management

especially problematic in areas where synergy with other types of polluting agents exists. In the case of industrial areas, the large inputs of acidifying compounds are often typical and creates specific conditions for increased mobilization, bioavailability, and thereby toxicity of the metals stored in soils (Clemente et al. 2003; Cappuyns et al. 2004; De Vries et al. 2005; European Communities 2006). The studies of urban soils in many cities around the world confirmed significantly higher concentration of cadmium, copper, lead, zinc, mercury, and other metals (Chen et al. 2005; Biasioli et al. 2006, 2007; Lee et al. 2006; Wong et al. 2006; Morton-Bermea et al. 2009; Ajmone-Marsan and Biasioli 2010; Morton-Bermea et al. 2010; Awadh et al. 2015; Karim et al. 2015; Chen et al. 2015, 2016; Wu et al. 2015a; Liu et al. 2016; Streets et al. 2017; Xia et al. 2017). In urban localities, metals can input into soil via emissions from industry and traffic, combustion of fossil fuels, and municipal wastes. Lead and copper mainly come from traffic and combustion, and Cu originates from brake consumption. Incinerators and material degradation (pipes, cables) are other sources of urban contamination of soils. Soils receive also Cu, Pb, Cd, and Hg mainly from

atmospheric deposition, irrigation water, applications of agrochemicals, fertilizers, and sewage sludge (Wong et al. 2006; Biasioli et al. 2007; Díaz Rizo et al. 2013; Gonçalves Jr. et al. 2014; Sager et al. 2015). In Europe, mandatory reductions on the annual emissions of cadmium, lead, and mercury to avoid significant adverse effects on ecosystems have been introduced in the Heavy Metals Protocol (UN/ECE 1998). This will have an increasing importance because, according to the most recent report of the Coordination Centre for Effects, the distribution and magnitude of the deposition of these elements puts large areas of European ecosystems at risk both in 2000 and 2020 (Posch et al. 2005).

Industrial contributions

Generally, heavy metal sources in the environment include geogenic, industrial, agricultural, wastes, and atmospheric sources. The weathering and volcanic eruptions contribute to heavy metal pollution. Industrial sources include mining and smelting operations, metal mine tailings, disposal of high metal wastes in improperly protected landfills, industrial production, metal processing in refineries, coal burning in power plants and local coal burning, petroleum combustion, plastics, textiles and microelectronics, and also domestic and agricultural use of metals and metal-containing compounds, land application of fertilizer, animal manures, biosolids (sewage sludge), compost, and pesticides. The contamination of environment can also result from corrosion of metals, atmospheric deposition, soil erosion of metal ions, and leaching of the heavy metals under an acid condition, resuspension of sediment, and metal evaporation from water resources to soil and ground water. Metal emissions from large metal refineries, steel industry, and coal mine spoils, metalliferous mine spoils and smelters, mainly Pb and Zn ore mining, and smelting have enormous effects on accumulation of metals in soils, and high metal emissions are also from power stations and incinerators. The ashes and particulate matter originating from the burning of fossil fuel have high content Cd, Zn, As, Se, Cu, Mn, and V (Anikwe and Nwobodo 2002; Basta et al. 2005; De Vries et al. 2005; European Communities 2006; Ajmone-Marsan and Biasioli 2010; Lin et al. 2013; Guan et al. 2014; Karimi Nezhad et al. 2014; Kelepertzis 2014; Li et al. 2014; Wu et al. 2015a; Liao et al. 2016; Mukhopadhyay et al.

Table 3 Comparison of heavy metals content in soil around industrial zones as coefficients of metal concentration (Caroli 2000; Davydova and Tagasov 2004)

Industries	> 100 km	100–50 km	50–10 km
Warmthenergetics	Ni, V	Sb, Se, Hg	Cr, Pb, Zn
Electrotechnics	Pb, Cd	Ni, V, Cr	Mo, Zn, Sn
Machinery	–	Ni, Cr, Pb	Cr, Mn, Sb
Motor vehicles	Pb	Ni, V, Cr	Zn, Co, Hg
Black metallurgy	–	Fe, Mn, Sb	Ni, Cr, V

2016; Obiora et al. 2016). Industrial wastewaters often contain higher concentration of heavy metals such as Cd, Ni, Pb, Zn, Co, Cr, Cu, and Mn. Contaminated soils may contain heavy metal concentrations of 100 to 1000 times higher than their background (Jiang et al. 2004, 2014; Pastor and Hernández 2012; Díaz Rizo et al. 2013; Wu et al. 2015a; Cantinho et al. 2016; Xiao et al. 2017; Zhang et al. 2017). The type and content of heavy metals in soils due to dry and wet deposits are influenced by the origin of sources and distance of sources and also depend upon the specific conditions of sites because all solid particles from atmospheric deposition are eventually stored on land or water. For example, the contents of nickel and copper in soil are exponentially growing with a decreasing distance from the pollution source, see Table 3 (Caroli 2000; Davydova and Tagasov 2004). The various emission sources of heavy metals contributing to soil pollution and based on data from literature are summarized and listed in Table 4 (Chen et al. 2005, 2015; McLaren et al. 2005; Biasioli et al. 2006, 2007; Lee et al. 2006; Morton-Bermea et al. 2009; Ajmone-Marsan and Biasioli 2010; Simasuwannarong et al. 2012; Kuusisto-Hjort and Hjort 2013; Li et al. 2014; Resongles et al. 2014; Shen et al. 2017).

Agricultural contribution

Metal application of Cu, Zn, Fe, Mn, and B as important and essential elements for plant growth is now a common practice for remedy of metal deficiencies in soils (Kelepertzis 2014; Su et al. 2014; Tóth et al. 2016). Many chemicals used in agricultural applications contain Cu, Zn, Fe, Mn, and As. Applications of P fertilizers lead to increase concentration of Cd, As, Pb, and Hg. Heavy metal concentration in rock phosphate and P fertilizers were found to be 500 mg kg⁻¹ of Cd,

Table 4 Emission sources of heavy metals contributing to soil pollution due anthropogenic activities (Chen et al. 2005; McLaren et al. 2005; Biasioli et al. 2006, 2007; Lee et al. 2006; Morton-Bermea et al. 2009; Ajmone-Marsan and Biasioli 2010)

Industries	Heavy metals
Metalliferous mining	As, Cd, Cu, Ni, Pb, Zn
Smelters	As, Cd, Pb
Metallurgy, rolling, electronic industry	Ni, Cd, Pb, Hg, Se
Dyes and paints industry	Pb, Cr, As, Se, Mo, Cd, Co, Ba, Zn
Metal corrosion of materials	Cu, Pb, Cr, Ni, Co, Cr, Pb
Plastics industry	Cd, Zn, Pb, Sn
Chemical industry	Pb, Ni, Nb, Hg, Pt, Ru
Combustion of fossil fuels	Cd, Zn, As, Se, Cu, Mn, V
Wood industry	Cu, As, Cr
Tire wear, lubricant oils	Zn, Cd

273 mg kg⁻¹ of As, 17.2 mg kg⁻¹ of Pb, and 0.42 mg kg⁻¹ of Hg (Roberts 2014). The use of biosolids (livestock manures, composts, and municipal sewage sludge) to soil results to accumulation of metals in soils (As, Cd, Cr, Cu, Pb, Hg, Ni, Se, Mo, Zn, Tl, Sb, etc.) (Basta et al. 2005). Use of biosolid sand/or municipal compost leads to the higher content of metals (Cu, Zn, Pb, Cd, Fe, and Mn) in the soils. The metals such as Pb, Ni, Cd, Cr, Cu, and Zn can be released from biosolids under specific conditions and can contaminate soil profile and then water source and groundwater (McLaren et al. 2005; Yaroshevsky 2006, Gonçalves et al. 2014; Teh et al. 2016). Repeated applications of biosolids result to enrichment of metal in soil; the levels of Cu is 463 mg kg⁻¹, Zn 725 mg kg⁻¹, Ni 29 mg kg⁻¹, Pb 106 mg kg⁻¹, Cd 7 mg kg⁻¹, and Cr 40 mg kg⁻¹, respectively (McBride and Cherney 2004; McBride 2013). The upward trends of agro-livestock activities were reported for Zn, As, and Cu due to its growing application as additives to animal diet, and they are excreted by animals and lead to appreciable higher metal concentration in soils. The repeated use of the metal-containing chemicals (Cu, Zn, Pb, and As) as fungicides and pesticides for the treatment or prevention of apple, citrus, grape, cherry, and peach diseases resulted to the accumulation of these metals in soils. For instance, soils from 30-year-old citrus groves have 200–300 mg kg⁻¹ extractable Cu (state Mehlich III solution), that is 10–15 times upper levels than other soils

(Chaney et al. 2001; McBride and Cherney 2004; Fan et al. 2011; McBride 2013).

Indicators of soil contamination and assessment methods of heavy metal soil pollution

The key to an effective assessment of soil contamination with heavy metals is the use of suitable indicators and indices of pollution/contamination that can be regarded as a tool and guide for a comprehensive geochemical assessment of the soil environment state. The comprehensive way to assess the soil quality through the use of indices is also demonstrated by the ability to estimate environmental risk and soil degradation due to long-term accumulation of heavy metals. Moreover, the indices help to determine whether the accumulation of heavy metals was due to natural processes or is the result of anthropogenic activities, and therefore, the indices of pollution can contribute also to human activity monitoring (Ministry of Environment 1994; Birke and Rauch 2000; Reimann and de Caritat 2000; Sutherland 2000; Linde et al. 2001; Pagotto et al. 2001; Manta et al. 2002; Tjihuis et al. 2002; Skordas and Kelepertsis 2005; Ljung et al. 2006a, 2006b; Yang et al. 2006; Oliva and Espinosa 2007; Morton-Bermea et al. 2009; Silva et al. 2009; Ajmone-Marsan and Biasioli 2010; Lu and Bai 2010; Guillén et al. 2011; Serbaji et al. 2012; Likuku et al. 2013; Brady et al. 2014; Rahmanipour et al. 2014; Karim et al. 2015; Omran 2016; Pan et al. 2016; Paz-Ferreiro and Fu 2016; Zhang et al. 2016). The most commonly used assessment methods of metal pollution/contamination in soils are based on various indicators and indices. An indicator of soil contamination by heavy metals depends on various characteristics such as chemical properties (total/recoverable content, available/extractable amount, and fractionation/speciation), biochemical properties (enzyme activity, FDA hydrolysis), and microbial properties (microbial biomass, microbial quotient, specific respiration, microbial metabolic quotient, and microbial community structure).

Chemical indicators

Total concentration of metals and metalloids is still the most useful common chemical indicators of soils pollution. However, the total concentration cannot exactly indicate the mobility and the actual

bioavailability of the metals in soils because less than 5% of the total content is just mobile or bioavailable (He et al. 2005a, 2005b; Ma et al. 2016). The most frequently used method for the estimation of the mobility of metals is sequential extraction, which is closely related to bioavailability (Gleyzes et al. 2002; Nieto et al. 2007; Rao et al. 2008; Long et al. 2009; Yu et al. 2010; Ivezić et al. 2013; Rowe 2014). The BCR-701 method/procedure, developed by the Community Bureau of Reference (Ivezić et al. 2013; Sahito et al. 2015; Wan et al. 2017), is widely used as well. The selective extraction methods are generally applied procedures used for the evaluation of the environmental impact of heavy metals (Rao et al. 2008). The extractable metals have been suggested to represent their bioavailability or toxicity. A number of extraction procedures were proposed for estimation of their mobility in soil and are based on heavy metals water solubility or chemical association with soil constituents (Table 5) (Rao et al. 2008; Kabata-Pendias 2011; Esmailzadeh et al. 2016; Rosado et al. 2016; Wan et al. 2017). The advantage of sequential extraction is the improved phase specificity. Extractants can be classified based on their reaction mode: (1) acids such as HCl, HNO₃, (2) chelating agents like EDTA and DTPA, (3) buffered salt solutions such as NH₄OAc, and (4) unbuffered salt solutions such as

Table 5 Extractable heavy metal content as indicators for assessing soil contamination (Rao et al. 2008; Kabata-Pendias 2011; Esmailzadeh et al. 2016; Rosado et al. 2016; Wan et al. 2017)

Fractions	Extraction methods
Water soluble	Centrifugation, displacement, dialysis, filtration, ultrafiltration
Exchangeable	KCl, CaCl ₂ , MgCl ₂ , KNO ₃ , Ca(NO ₃) ₂ , NH ₄ NO ₃ , BaCl ₂ , NH ₄ Cl, Mg(NO ₃) ₂ , AlCl ₃ , NaNO ₃
Potentially exchangeable	Pb(NO ₃) ₂ , NH ₄ OAc, NH ₄ NO ₃
Organically bound	Na ₄ P ₂ O ₇ , K ₄ P ₂ O ₇ , NaOCl, EDTA/H ₂ O ₂ /HNO ₃ /NaOAc
Carbonate-bound	HOAc, NaOAc, HOAc, EDTA
Oxide-bound	Hydroxylamine hydrochloride, dithionite/citrate/bicarbonate
Residual	HNO ₃ , HCl + HNO ₃
Mineral lattice	HNO ₃ /HF/HClO ₄

Table 6 Pollution indices—single indices and total complex indices (include integrated indices and indices of ecological risk)

Single indices of pollution

Index	Formula	References
Geoaccumulation index (I_{geo})	$I_{geo} = \log_2 \left(\frac{c_n}{1.5 B_n} \right)$	Muller (1969)), Loska et al. (2003)), Ji et al. (2008)), and Lu and Bai (2010)
Enrichment factor (EF)	$EF = \frac{\overline{c_n}^{(sample)}}{\overline{B_n}^{(background)}}$	Reimann and de Caritat (2000)) and Sutherland (2000)
Percentage enrichment factor (%EF)	$\%EF = \left(\frac{c - c_{min}}{c_{max} - c_{min}} \right) \cdot 100$	Loska et al. (2003)
Single pollution index (PI)	$PI = \frac{c_n}{B_n}$	Hakanson (1980)), Muller (1981)), Qu et al. (2004)), Cheng et al. (2007)), Abraham and Parker (2008)), Cheng and Hu (2012)), Wu et al. (2015a, 2015b))
Threshold pollution index (PI_T)	$PI_T = \frac{c_i}{c_{TL}}$	Qingjie et al. (2008)), Xu et al. (2008)), and Lu et al. (2009))
Contamination factor (CF)	$CF = \frac{c_M}{c_{sp}}$	Hakanson (1980)) and Loska et al. (2004))
Total complex indices		
Sum of pollution index (PI_{sum})	$PI_{sum} = \sum_{i=1}^m PI_i$	Gong et al. (2008))
Average of pollution index (PI_{Avg})	$PI_{Avg} = \frac{1}{m} \sum_{i=1}^m PI_i$	Bhattacharya et al. (2006)), Gong et al. (2008)), and Inengite et al. (2015))
Weighted average of pollution index (PI_{wAvg})	$PI_{wAvg} = \sum_{i=1}^m w_i PI_i$	Hakanson (1980)), Muller (1981)), Cheng et al. (2007)), Qingjie et al. (2008)), Xu et al. (2008)), and Cheng and Hu (2012))
New pollution index (PIN)	$PIN = \sum_{i=1}^m W_i^2 PI_i$	Caeiro et al. (2005)) and Doležalová Weissmannová et al. (2015))
Integrated pollution index (IPI)	$IPI = \text{mean}(PI_i)$	Caeiro et al. (2005)) and Gong et al. (2008)
Integrated threshold pollution index (IPI_T)	$IPT = \frac{1}{n} \left(\frac{1}{n} + \frac{1}{n} + \dots + \frac{1}{n} \right)$	Lu et al. (2009)), Adamu and Nganje (2010)), Oje et al. (2010)), and Doležalová Weissmannová et al. (2015))
Pollution load index (PLI)	$PLI = \sqrt[3]{CF_1 \cdot CF_2 \cdot CF_3 \cdot \dots \cdot CF_n}$	Liu et al. (2005))
Degree of contamination (C_{deg})	$C_{deg} = \sum_{i=1}^n C_f$	Hakanson (1980)) and Caeiro et al. (2005))
Modified contamination factor (mC_{deg})	$mC_{deg} = \frac{1}{n} \sum_{i=1}^n CF_i$	Abraham and Parker (2008))
Nemerow pollution index ($PI_{Nemerow}$)	$PI_{Nemerow} = \sqrt{\left(\frac{1}{n} \sum_{i=1}^n PI_i \right)^2 + \frac{PI_{max}^2}{2}}$	Cheng et al. (2007)), Jiang et al. (2011)), and Inengite et al. (2015))
Indices of ecological risk		
Pollution coefficient of a single heavy metal (C_f^i)	$C_f^i = C_s^i / C_n^i$	Hakanson (1980)), Biasioli et al. (2006, 2007)), Lim et al. (2008)), Xu et al. (2008)), Ajmone-Marsan and Biasioli (2010)), and Rahman et al. (2014))
Single index of ecological risk factor (E_r^i)	$E_r^i = T_r^i \cdot C_f^i$	Hakanson (1980)) and Gong et al. (2008))
Risk index (PERI)	$PERI = \sum_{i=1}^n E_r^i$	Kowalska et al. (2016))
Mean ERM quotient (MERMQ)	$MERMQ = \frac{\sum_{i=1}^n C_i / ERM_i}{n}$	McCready et al. (2006)), Christophoridis et al. (2009)), and Violintzis et al. (2009))
Contamination severity index (CSI)	$CSI = \sum_{i=1}^n W_{ia} \left[\left(\frac{C_i}{ERL_i} \right)^{\frac{1}{2}} + \left(\frac{C_i}{ERL_i} \right)^2 \right]$	Long et al. (2000, 2006)) and Gao and Chen (2012))

Table 6 (continued)

Single indices of pollution		
Index	Formula	References
	$W_{ia} = \frac{(\text{loading value}_i \times \text{eigen value})}{\sum_i (\text{loading value}_i \times \text{eigen value})}$	
<p>Explanation: c_n, heavy metal content in soil; B_n, concentration of heavy metal (n) geochemical background, constant factor 1.5, compensating the B_n due to lithogenic effects (fluctuations of heavy metals content as a result of natural processes); c_n (<i>sample</i>), metal concentration in soil analyzed sample; c_{Ref} (<i>sample</i>), concentration of the reference metal in soil analyzed sample; B_n (<i>background</i>), metal concentration in the reference environment; B_{Ref} (<i>background</i>), reference metal concentration in the reference environment; c, mean total concentration in the soil; c_{min}, minimum concentration; c_{max}, maximum concentration; c_i, metal concentration; c_{TL}, tolerance levels of metal concentration; c_M, mean metal concentration; c_{pp}, preindustrial concentration of metal; PI_i, single pollution index of heavy metal i; m, number of determined heavy metals; w_i, weight of PI_i; W_b, class of heavy metal considering degree of contamination (from 1 to 5); $mean(PI_i)$, mean value of the pollution index; c_1, c_2, c_n, average concentration of heavy metals; TL_1, TL_2, TL_n, tolerable levels of heavy metals; n, number of heavy metal; $CF_f - CF_n$, contamination factors; C_f, single index of contamination factor CF; CF_i, contamination factor CF; P_{max}, maximum of single pollution indices PI of all heavy metals; C_s^i -, concentration of heavy metal; C_n^i -, background level heavy metal in soil; C_f^i -, pollution coefficient of single element (heavy metals); T_r^i -, toxic response factor of individual metal; E_r^i -, single index of ecological risk factor; C_i, concentration of heavy metal; ERM_i, effects range median; ERL_b, effects range-low; W_{ia}, weight of heavy metals (resulted from PCA/FA)</p>		

CaCl₂ and NH₄NO₃ (Kabata-Pendias 2011). Fractionation of metals in soil can improve understanding of their association with soil constituents and their mobility characteristics in case of change of soil and environmental conditions. In this approach, the bioavailable fractions are fractionated into water soluble and exchangeable. Organically bound, carbonate-bound, oxide-bound fractions can be potentially bioavailable. The residual fractions are in the resistant minerals and these nonextractable fractions are not available to organisms. The ratio of the individual fractions largely determines the availability and mobility of metals in soil and also varies significantly in soils. Single-step chemical extraction is the most useful method for the determination of the amount of available metals in soil, including water-soluble and exchangeable metals such as available to plants and its amount closely correlated with plant uptake. This phenomenon of available metals can be used as indicators of metal availability in soil (Jing et al. 2008; Ivezic et al. 2013; Sungur et al. 2015; Fernández-Ondoño et al. 2017).

Pollution indices

The often used indices can be divided into two groups: single indices and total complex indices including integrated indices and indices of ecological risk. The calculation formulae for pollution indices are summarized in Tables 6 and 7; Table 8 includes the classes of pollution.

Single indices of pollution

The single indices as indicators of soil pollution comprise numerous indices, such as Geoaccumulation Index (I_{geo}), Enrichment Factor (EF), Pollution Index (PI), Threshold Pollution Index (PI_T), and Contamination Factor (CF). These indices are calculated from the contents of each individual metal in soils, and these indices can be used for the classification of soils into several classes according to the degree of pollution (see Tables 6 and 7) (Muller 1969, Muller 1981; Hakanson 1980; Qu et al. 2004; Cheng et al. 2007, 2014; Abraham and Parker 2008; Qingjie et al. 2008; Xu et al. 2008; Lu et al. 2009; Cheng and Hu 2012; Ye et al. 2012; Zahra et al. 2014; Awadh et al. 2015; Chai et al. 2015; Chen et al. 2015; Wu et al. 2015a; Ke et al. 2017; Peña-Icart et al. 2017).

I_{geo} is commonly used for the assessment of soil pollution by heavy metals. This index formulates as the ratio of the concentrations of heavy metals in soils to background metal levels in soils or in corresponding soils. The constant 1.5 is used to state of natural fluctuations of metals in the environment and detection of small anthropogenic impacts (Muller 1969; Loska et al. 2003; Ji et al. 2008; Lu and Bai 2010). The index of geoaccumulation consists of seven grades.

The EF is given by standardization of a tested metal against a reference metal with low occurrence variability, and EF has five classes (Sutherland 2000). The most

Table 7 Classes of single indices: I_{geo} , EF, PI, PI_T , and CF

Single indices	Value	Soil quality
I_{geo}	$I_{geo} \leq 0$	Uncontaminated
	$0 \leq I_{geo} < 1$	Uncontaminated to moderately contaminated
	$1 \leq I_{geo} < 2$	Moderately contaminated
	$2 \leq I_{geo} < 3$	Moderately to strongly contaminated
	$3 \leq I_{geo} < 4$	Strongly contaminated
	$4 \leq I_{geo} < 5$	Strongly to extremely contaminated
	$I_{geo} > 5$	Extremely high contaminated
EF	$EF < 2$	Deficiency to minimal mineral enrichment
	$EF = 2-5$	Moderate enrichment
	$EF = 5-20$	Significant enrichment
	$EF = 20-40$	Very high enrichment
	$EF > 40$	Extremely high enrichment
PI	$PI < 1$	Unpolluted, low level of pollution
	$1 \leq PI \leq 3$	Moderate polluted
	$3 \leq PI$	Strong polluted
PI_T	$PI_T < 1$	Unpolluted
	$1 \leq PI_T \leq 2$	Low polluted
	$2 \leq PI_T \leq 3$	Moderate polluted
	$3 \leq PI_T \leq 5$	Strong polluted
	$5 \leq PI_T$	Very strong polluted
CF	$CF < 1$	Low contamination factor
	$1 \leq CF \leq 3$	Moderate contamination factor
	$3 \leq CF \leq 6$	Considerable contamination factor
	$6 \leq CF$	Very high contamination factor

Explanation: Geoaccumulation index (I_{geo}), enrichment factor (EF), single pollution index (PI), threshold pollution index (PI_T), and contamination factor (CF)

referenced metals are Sc, Mn, Ti, Al, Fe, and Ca (Reimann and de Caritat 2000). The normally used reference metals are Mn, Al, and Fe. Soil contamination can also be expressed as the percentage enrichment factor (%EF) (Loska et al. 2003).

Single PI uses often various reference values of metals in soils, such as preindustrial level, average crust level, background level, baseline values, values of national criteria, or threshold pollution values. For example, PI_T is formulated on the basis of average ratio of metal concentration (c_i) and tolerance levels of metals (c_{TL} given by national guidelines or criteria of metal and exceeding concentrations are considered hazardous for human health.

The CF is defined as ratio of mean metal concentration in the soil from at least five samples (c_M) and metal concentration in unpolluted soil (c_n). The concentration of elements in the Earth’s crust is commonly used as the preindustrial concentrations and is considered as a reference value for evaluation of soil contamination by heavy metals (Hakanson 1980; Loska et al. 2004).

Total complex indices

Total complex indices of pollution are calculated as multielement indices based on single pollution indices (Qingjie et al. 2008). Each type of total complex indices of pollution can be composed of the mentioned single indices separately. Integrated indices of pollution contain following indices and are summarized in Tables 6 and 8 where the calculation method and classes of pollution/contamination are described: Sum of Pollution Index (PI_{sum}), Average Pollution Index (PI_{Avg}), Integrated Pollution Index (IPI), Integrated Threshold Pollution Index (IPI_T), Pollution Load Index (PLI), New Pollution Index (PIN), Nemerow Pollution Index ($PI_{Nemerow}$), Degree of Contamination (C_{deg}), Modified Contamination Factor (mC_{deg}), and indices of ecological risk are Potential Ecological Risk Index (PERI), Mean ERM Quotient (MERMQ), and Contamination Severity Index (CSI) (Hakanson 1980; Muller 1981; Cheng et al. 2007; Xu et al. 2008; Cheng and Hu 2012; Zhu et al. 2012; Likuku et al. 2013; Rahmanipour et al. 2014; Wang et al. 2014; Al-Anbari et al. 2015; Soliman et al. 2015).

PI_{sum} is stated as the sum of all heavy metals in contaminated soil and this index was very often used to the assessment of soil and sediment quality (Gong et al. 2008).

PI_{Avg} is expressed on the basis of single PI and number metals. If this index exceeds 1.0, the soils are heavily contaminated and have low quality (Bhattacharya et al. 2006; Gong et al. 2008; Inengite et al. 2015).

IPI is expressed as the mean value of the PI by Lu et al. (2009), Oje et al. (2010), and Doležalová Weissmannová et al. (2015).

IPI_T express multielement contamination and can be used for the assessment of soil pollution with regard to the common effect of metals in soil. If the value of this index is above 1.0, the average concentration of metal is

Table 8 Classes of total complex indices—integrated indices of pollution (IPI, PLI, $PI_{Nemerow}$, C_{deg} , mC_{deg}) and classes of indices of ecological risk (E_r , PERI, MERMQ, SCI)

Total complex indices

Value	Soil quality	Ecological risk
Integrated indices of pollution		
IPI		
$IPI < 1$	Low contaminated/polluted	
$1 \leq IPI \leq 2$	Moderate contaminated/polluted	
$IPI < 2$	Strongly contaminated/polluted	
PLI		
$PLI > 1$	Polluted	
$PLI = 1$	Baseline levels of pollution	
$PLI < 1$	Not polluted	
PIN		
0–7	Clean (class 1)	
7–95.1	Trace contaminated (class 2)	
95.1–518.1	Lightly contaminated (class 3)	
518.1–25,486	Contaminated (class 4)	
2548.6– ∞	Highly contaminated (class 5)	
$PI_{Nemerow}$		
$PI_{Nemerow} \leq 0.7$	Clean	
$0.7 \leq PI_{Nemerow} \leq 1$	Warning limit	
$1 \leq PI_{Nemerow} \leq 2$	Slight pollution	
$2 \leq PI_{Nemerow} \leq 3$	Moderate pollution	
$3 \leq PI_{Nemerow}$	Heavy pollution	
C_{deg}		
$C_{deg} < 8$	Low degree of contamination	
$8 \leq C_{deg} \leq 16$	Moderate degree of contamination	
$16 \leq C_{deg} \leq 32$	Considerable degree of contamination	
$32 \leq C_{deg}$	Very high degree of contamination	
mC_{deg}		
$mC_{deg} \leq 1.5$	Very low contamination	
$1.5 \leq mC_{deg} \leq 2$	Low contamination	
$2 \leq mC_{deg} \leq 4$	Moderate contamination	
$4 \leq mC_{deg} \leq 8$	High contamination	
$8 \leq mC_{deg} \leq 16$	Very high contamination	
$16 \leq mC_{deg} \leq 32$	Extremely high contamination	
$32 \leq mC_{deg}$	Ultra high contamination	
Indices of ecological risk		
E_r		
$E_r < 40$		Low ecological risk
$40 < E_r \leq 80$		Moderate ecological risk
$80 < E_r \leq 160$		Considerable ecological risk
$160 < E_r \leq 320$		High ecological risk
$E_r > 320$		Serious ecological risk
PERI		
$PERI < 150$		Low ecological risk
$150 < PERI < 300$		Moderate ecological risk

Table 8 (continued)

Total complex indices		
Value	Soil quality	Ecological risk
300 < PERI < 600		High potential ecological risk
PERI ≥ 600		Significantly high ecological risk
MERMQ		
MERMQ ≤ 0.1		Low priority (probability existing toxicity 9%)
0.1 < MERMQ ≤ 0.5		Medium-low priority (probability existing toxicity 21%)
0.5 < MERMQ ≤ 1.5		High-medium priority (probability existing toxicity 49%)
MERMQ > 5		High priority (probability existing toxicity 76%)
SCI		
SCI ≤ 0.5		Uncontaminated
0.5 < SCI ≤ 1		Very low severity of contamination
1 < SCI ≤ 1.5		Low severity of contamination
1.5 < SCI ≤ 2		Low to moderate severity of contamination
2 < SCI ≤ 2.5		Moderate severity of contamination
2.5 < SCI ≤ 3		Moderate to high severity of contamination
3 < SCI ≤ 4		High severity of contamination
4 < SCI ≤ 5		Very high severity of contamination
SCI > 5		Ultra high severity of contamination

Explanation: Integrated Pollution Index (IPI), Pollution Load Index (PLI), New Pollution Index (PIN), Nemerow Pollution Index (PI_{Nemerow}), Degree of Contamination (C_{deg}), Modified Contamination Factor (mC_{deg}), Single Index of Ecological Risk (E_r), Potential Ecological Risk Index (PERI), Mean ERM Quotient (MERMQ), Contamination Severity Index (CSI)

above permissible levels (Adamu and Nganje 2010; Doležalová Weissmannová et al. 2015).

The pollution level of soil by heavy metals can be described also through PLI. The value of PLI being close to 1 indicates heavy metal pollution similar to the background level, while values above 1 indicate soil pollution (Liu et al. 2005). The PLI provides simple but comparative means for assessing site quality.

PIN (Caeiro et al. 2005) is used for the calculation of the single PI of heavy metal and class of heavy metals (W_i) considering the degree of contamination, and it varies from 1 to 5. Each index threshold was calculated using the W_i and C_i values for the corresponding class—classes 1–5.

PI_{Nemerow} evaluates the soil pollution and also assesses the soil quality with using five classes (Cheng et al. 2007; Jiang et al. 2011, 2014; Inengite et al. 2015).

C_{deg} assesses soil contamination, and values of this index determine four classes of contamination (Hakanson 1980; Caeiro et al. 2005).

mC_{deg} allows the assessment of the overall soil contamination by heavy metals (Abraham and

Parker 2008) and classification of soil into four classes.

Potential Ecological Risk Index (PERI, or RI) is calculated on the basis of 3 indices: single index of ecological risk factor (E_rⁱ), the pollution coefficient of a single element (C_fⁱ), and toxic response factor of individual metals (T_rⁱ). The toxic response factors are for Pb (5), Cd (30), Cr (2), Cu (5), Zn (1), Ni

Table 9 The values of ERL and ERM (mg kg⁻¹) (Long et al. 2000, 2006; Christophoridis et al. 2009; Violintzis et al. 2009; Gao and Chen 2012)

Heavy metals	ERL	ERM
As	8.2	70
Hg	0.15	0.17
Cu	34	270
Zn	150	410
Cr	81	370
Ni	20.9	51.6
Pb	46.7	218
Cd	1.2	9.6

Table 10 Indices of pollution in scientific literature for assessment of soil pollution

Type of soils	Heavy metals	Indices										References	
		PI	I_{geo}	EF	CF	PI_{sum}	PI_{Avg}	$PI_{Nemerow}$	PLI	C_{deg}	PERI		
Urban	As, Cd, Co, Cr, Cu, Hg, Ni, Pb, Zn	+	+										Luo et al. (2012)
	Cr, Ni, Cu, Pb, Zn, As, Hg and Cd	+	+										Wei and Yang (2010)
	Cd, Cu, Pb and Zn	+	+										Liu et al. (2016)
	Zn, Pb, Cu, Mn, Cr, Cd, Ni, Sn, Ag	+	+	+		+						+	Kowalska et al. (2016)
	As, Cd, Cr, Hg, Pb,	+	+										Hong-gui et al. (2012)
	Pb, Cd, Cu, Zn, Cr	+	+	+					+				Sayadi et al. (2015)
	Cu, Zn, Pb	+	+	+	+					+			Abraham and Parker (2008)
	Cu, Pb, and Zn	+	+	+	+	+							Gong et al. (2008)
	Cd, Cu, Mn, Ni, Pb Zn	+	+										Pam et al. (2013)
	Cu, Ni, V, Co, Cd, Zn, Mo, and Pb	+	+										Karbassi et al. (2015)
Industrial	Cd, Cu, Pb, Zn	+	+	+								+	Mohamed et al. (2014)
	Pb, Cu, Cd, Cr, and Zn	+	+							+			Ogunkunle and Fatoba (2013)
	Cd, Pb, Cu, Cr, and Zn	+	+							+			Jiang et al. (2014)
	Cu, Cd, Fe, Zn, Pb	+	+	+									Elias and Gbadegesin (2011)
	As, Cd, Cr, Cu, Hg, Ni, Pb, Sb, Zn	+	+	+	+						+		Loska et al. (2004)
	Cr, Cd, Pb, Zn, Cu, and Ni	+	+										Qing et al. (2015)
	As, Cd, Cr, Cu, Ni, Pb, Zn, and Hg	+	+							+			Guan et al. (2014)
	Ni, Cu, Fe, Cr, and Cd	+	+	+	+								Ololade (2014)
	Cu, Cr, Ni, Cd, Pb	+	+										Ripin et al. (2014)
	Fe, Ni, Cd, Cr, Zn, Cu, and Pb	+	+	+	+	+				+			Inengite et al. (2015)
Park	Cd, Cr, Cu, Zn, Pb, and Ni	+	+	+									Wang et al. (2015a, 2015b, 2015c)
	Pb, Cd, Cr, As, and Hg	+	+										Shu and Zhai (2014)
	Co, Cr, Fe, Hg, Mn, Ni, and Pb	+	+	+									Hu et al. (2013)
	Zn, Pb, Cu, Mn, Cr, Cd, Ni, Sn, Ag	+	+	+	+	+							Doležalová Weissmannová et al. (2015)
	Cd, Pb, Cr, Ni, Cu, Zn, Fe, Mn	+	+										and Kowalska et al. (2016)
	Cu, Ni, Pb, and Zn	+	+										Gu et al. (2016)
	Cd, Cr, Cu, Hg, Ni, Pb, and Zn	+	+										Chen et al. (2005)
	Fe, Cu, Zn, Cr, Ni, Pb, Cd, and V	+	+										Zhang et al. (2008, 2016, 2017)
													Pejman et al. (2015)

Table 10 (continued)

Type of soils	Heavy metals	Indices										References	
		PI	I_{geo}	EF	CF	PI_{sum}	PI_{Avg}	$PI_{Nemerow}$	PLI	C_{deg}	PERI		
	As, Cd, Co, Cr, Cu, Mn, Ni, and Zn	+	+	+	+								Varol (2011)
	Cd, Pb, Zn, As, Cu, Cr, and Hg	+						+					Caeiro et al. (2005)

Explanations: PI, Pollution Index; I_{geo} , Geoaccumulation Index; EF, Enrichment Factor; CF, Contamination Factor; PI_{sum} , Sum of Pollution Index; PI_{Avg} , Average Pollution Index; $PI_{Nemerow}$, Nemerow Pollution Index; PLI, Pollution Load Index; C_{deg} , Degree of Contamination; PERI, Potential Ecological Risk Index

(5), and Mn (1), and preindustrial levels of metals are 0.25, 1.0, 15, 50, 70, 90, and 175 (Hakanson 1980; Biasioli et al. 2006, 2007; Xu et al. 2008; Ajmone-Marsan and Biasioli 2010; Rahman et al. 2014). These indices include also toxic effects to environment, and evaluate pollution using comparable and equivalent methods. The average earth's crustal abundance is used as background concentrations of metals (see Table 1). PERI index covers a various environmental effects, such as toxicology, environmental chemistry, and ecology, and can evaluate ecological risks caused by heavy metals (Lim et al. 2008; Ke et al. 2017).

MERMQ is suitable tool for assessing the harmful impact on soils and was the first applied for evaluation of sediment quality with respect to the evidence of negative effects (Christophoridis et al. 2009; Violintzis et al. 2009). Chemical concentrations of metals corresponding to the 10th and 50th percentiles of adverse biological effects were called the effects range-low (ERL) and effects range-median (ERM), see Table 9. There are three ranges in chemical concentrations, where adverse effects rarely (< ERL), occasionally (\geq ERL and < ERM), and frequently occur (\geq ERM) (McCready et al. 2006; Christophoridis et al. 2009). The value of ERM is used for the calculation of MERMQ. This index can be applied to identification and prioritization of areas with potential hazards with respect to quality of soils.

The CSI can be calculated using the values of ERL and ERM along with multicomponent statistical methods, such as principal component analysis (PCA) and factor analysis (FA) that identify specific factor weight of each metal (W_{ia}) (Long et al. 2000, 2006; Gao and Chen 2012; Zhu et al. 2012). The value of W_{ia} originates from PCA/FA (Pejman et al. 2015). This method can identify the sources and origin of heavy metals in every locality, and the weighted values are the factors of anthropogenic pollution contribution.

Comparison of contamination in various world countries

The heavy metal contents in soils correlate to the intensity of anthropogenic and natural processes. The concentrations of heavy metals in soils are used for the calculation of pollution indices of pollution. The most

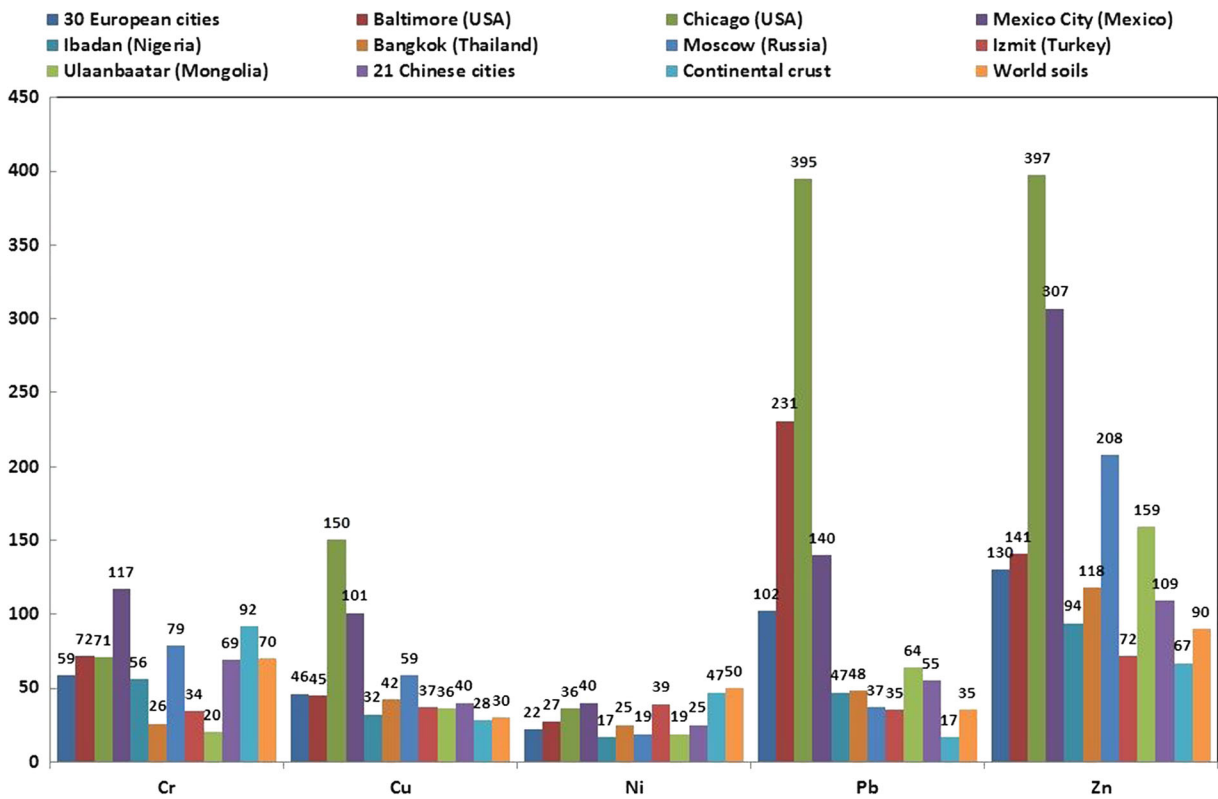


Fig. 1 Heavy metals Cr, Cu, Ni, Pb, and Zn in soils over the world

important indices for assessment of soil pollution/contamination by heavy metals and its classification of pollution/contamination are listed in Tables 6, 7, and 8. Assessment of anthropogenic impact on soil can be expressed using specified indices. The most important indices of the degree of heavy metal pollution in the soils are the I_{geo} and EF, as well as the Single PI, PI_{sum} , $PI_{Nemerow}$ and PERI. The selected heavy metals and used indices of pollution varied greatly in soils over the world and many various indices of pollution (Table 10) verified and confirmed major contributions from anthropogenic activities. The concentrations of heavy metals in soils have been determined in soils many world areas, and their contents depend on the various intensity of anthropogenic inputs, and also development and expansion of industry and urbanization. The concentrations of heavy metals in soils have increasing trend and generally, the highest amounts are in older and more heavily industrialized localities. The concentration of metals As, Cd, Cu, Cr, Ni, and Pb are the highest in old and mega-urbanized cities with huge industrialization like Chicago (As 20, Co 11, Cr 71, Cu

150, Pb 395, and Zn 397 mg kg⁻¹) or Moscow (Cd 2, Co 4.3, Cu 59, Ni 19, Pb 37, and Zn 208 mg kg⁻¹) and are also higher than in case of some cities in Europe with median of heavy metals As 13, Cd 0.95, Co 6.4, Cr 59, Cu 46, Pb 102, and Zn 130 mg kg⁻¹ (Figs. 1 and 2) (Sanders 2003; Markiewicz-Patkowska et al. 2005; Lee et al. 2007; Pouyat et al. 2007; Gong et al. 2008; Birch et al. 2011; Hong-gui et al. 2012; Ogunkunle and Fatoba 2013; Jiang et al. 2014; Mohamed et al. 2014; Ripin et al. 2014; Qing et al. 2015; Sayadi et al. 2015). Luo et al. (2012) reports heavy metals levels in soils from 21 cities in China and median of heavy metals were As 12, Cd 0.39, Co 14, Cr 69, Cu 40, Hg 0.31, Ni 25, Pb 55, and Zn 109 mg kg⁻¹, while the concentrations fall within the range As 6.86–32.8, Cd 0.13–6.90, Co 3.55–58.9, Cr 17.8–197, Cu 16.2–1226, Hg 0.12–0.77, Ni 4.08–910, Pb 26.7–110, and Zn 69.1–301 mg kg⁻¹. Metal concentrations are generally high in old industrial cities with characteristic inputs from emissions of traffic, power plants, and various industries. The metal pollution of soils reflects disparities in the historical development of areas or cities, land use, specific industrial

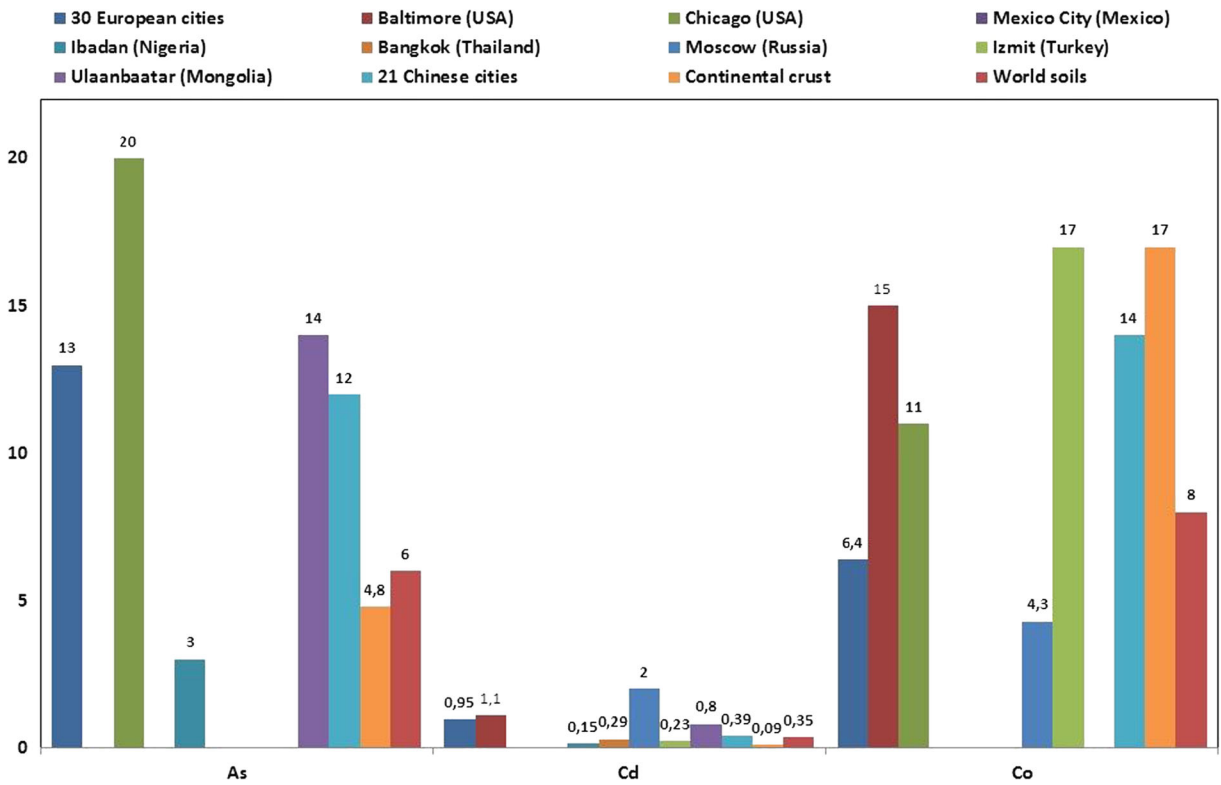


Fig. 2 Heavy metals As, Cd, and Co in soils over the world

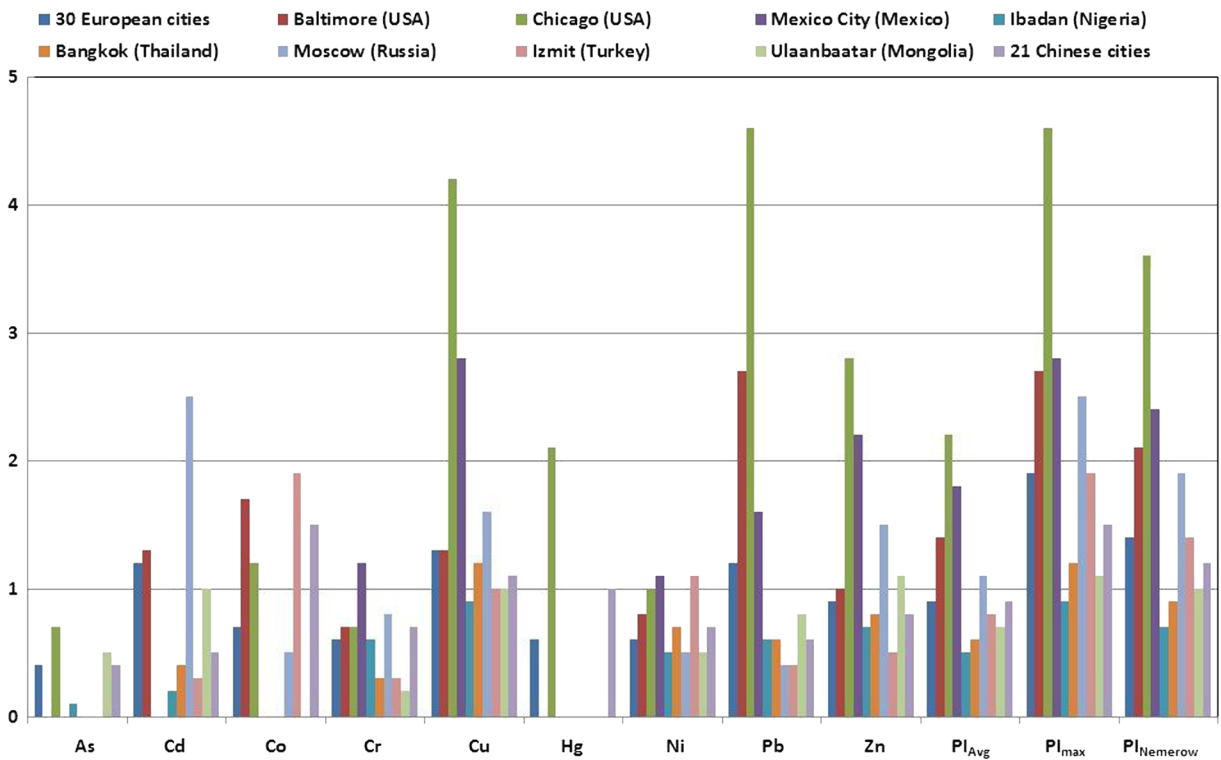


Fig. 3 Pollution indices (PI, PI_{Avg}, PI_{Max}, PI_{Nemerow}) of heavy metals in soils of selected world cities

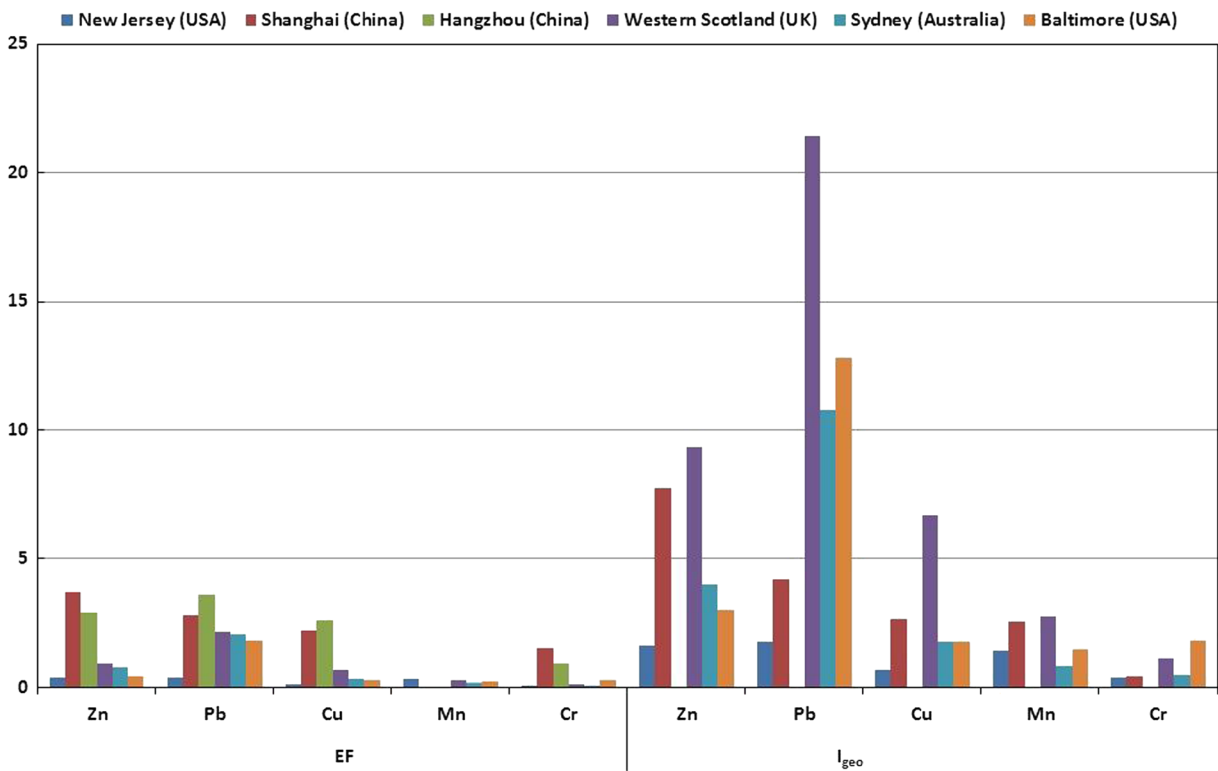


Fig. 4 EF and I_{geo} in urban soils of selected cities in the world

activities, growing trend of population density, local climate conditions, and also the differences in socioeconomic development in these countries.

According to the $PI_{Nemerow}$ index, most soils are polluted from slightly polluted with warning limit to heavy polluted. The levels of warning limit soils pollution were identified in Ibadan (Nigeria), Bangkok (Thailand), and Ulaanbaatar (Mongolia) with $PI_{Nemerow}$ 0.7, 0.9, and 1. The ranges of $PI_{Nemerow}$ (1–2) were obtained in European cities (1.4), Izmit 1.4 (Turkey), and Moscow (Russia) with a value of 1.9. $PI_{Nemerow}$ values of 2.1 and 2.4 were obtained for Baltimore (USA) and Mexico City (Mexico); it means that these soils are moderately polluted by heavy metals. Heavy polluted soils were detected in Chicago (USA) with a $PI_{Nemerow}$ value of 3.6. In Chicago, Pb, Cu, Hg, and Zn were identified as the most contributed metals. The analyzed values of used pollution indices confirmed the possibility of dividing heavy metals into two groups, the so-called urban metals (Pb, Cu, Zn, Hg, and Cd) and non-urban metals (Ni and Cr). According to the pollution indices in Fig. 3, where PI , PI_{Avg} , PI_{max} , and $PI_{Nemerow}$ of metals in soils of selected world cities are depicted, most soils in European and American cities were moderately or heavily

polluted in the case of Pb, Cd, Cu, and Zn more extensively than cities in Africa and Asia (Sanders 2003; Markiewicz-Patkowska et al. 2005; Pouyat et al. 2007; Birch et al. 2011). The index of EF and I_{geo} has been used to determine the degree of contamination for soils in various localities and verified different degrees of heavy metal contamination in soil (Sanders 2003; Markiewicz-Patkowska et al. 2005; Pouyat et al. 2007; Birch et al. 2011). The indices EF and I_{geo} are presented in Fig. 4. The value of EF confirmed slightly moderate to moderate enrichment of soils by Pb and Zn. Levels of I_{geo} varied from uncontaminated to moderately contaminated in the case of Mn; values of Cr varied from 0.84 (Sydney, Australia) to 2.75 (Western Scotland, UK). The obtained value of “urban metals” verified contamination grades from moderate contamination of 1.76 (New Jersey, USA) to extremely high contamination of 21.44 (Western Scotland, UK) in the case of Pb. The range of I_{geo} was from 0.66 (New Jersey, USA) to 6.71 (Western Scotland, UK), and the same trend was observed for Zn (1.62 New Jersey, USA) to 9.33 (Western Scotland, UK). I_{geo} value reflects the background levels of area and reflects the antropogenic contribution of

heavy metals as it was confirmed by analysis of data from scientific literature.

Conclusion

The heavy metal concentrations and indices of pollution/contamination varied greatly in soils over the world, and many various indices of pollution confirmed and verified major contributions from anthropogenic activities. Indices of soil pollution/contamination were divided into two groups: individual indices and total complex indices. It is evident that the metal pollution of soils reflects many factors (historical development, land use, industrialization processes, growing trend of population density, climate conditions, biogeography, etc.). This review provides analyses of soil pollution/contamination by heavy metals and summarizes the pollution sources; 20 different indices of heavy metal pollution were reviewed and classified into single indices and total complex indices of pollution/contamination. This review also contains classification of indices of pollution in the context of complex assessment of soil quality. The soil is one of the most important components of ecosystems in relation to human health; therefore, it is essential that the soil quality has been included in environmental quality management on a worldwide. The assessment of soil pollution and evaluation of soil quality have to be still monitored over the world.

Funding information Authors thank for support of Project No. FCH-S-17-4766 “Assessment of pollution in environmental compartments” funded by the Faculty of Chemistry (Brno University of Technology) and Project No. LO1203 “Regional Materials Science and Technology Centre-Feasibility Program” funded by the Ministry of Education, Youth and Sports of the Czech Republic.

References

- Abraham, G. M. S., & Parker, R. J. (2008). Assessment of heavy metal enrichment factors and the degree of contamination in marine sediments from Tamaki Estuary, Auckland, New Zealand. *Environmental Monitoring and Assessment*, 136(1–3), 227–238. <https://doi.org/10.1007/s10661-007-9678-2>.
- Adamu, C. I., & Nganje, T. N. (2010). Heavy metal contamination of surface soil in relationship to land use patterns: a case study of Benue State, Nigeria. *Materials Sciences and Applications*, 1(3), 127. <https://doi.org/10.4236/msa.2010.13021>.
- Adriano, D. C. (2001). *Trace elements in terrestrial environments: biogeochemistry, bioavailability, and risks of metals* (2nd ed.). New York: Springer-Verlag 867 p.
- Ajmone-Marsan, F., & Biasioli, M. (2010). Trace elements in soils of urban areas. *Water, Air, and Soil Pollution*, 213(1), 121–143. <https://doi.org/10.1007/s11270-010-0372-6>.
- Al-Anbari, R., Al Obaidy, A. H., H. Abd Ali, F. (2015). Pollution loads and ecological risk assessment of heavy metals in the urban soil affected by various anthropogenic activities. *International Journal of Advanced Research*, 3(2), 104–110.
- Al Obaidy, A. H. M. J., & Al Mashhadi, A. A. M. (2013). Heavy metal contaminations in urban soil within Baghdad City, Iraq. *Journal of Environmental Protection*, 4(1), 72–82.
- Anikwe, M. A., & Nwobodo, K. C. (2002). Long term effect of municipal waste disposal on soil properties and productivity of sites used for urban agriculture in Abakaliki, Nigeria. *Bioresource Technology*, 83(3), 241–250. [https://doi.org/10.1016/S0960-8524\(01\)00154-7](https://doi.org/10.1016/S0960-8524(01)00154-7).
- Arruti, A., Fernandez-Olmo, I., & Irabien, A. (2010). Evaluation of the contribution of local sources to trace metals levels in urban PM2.5 and PM10 in the Cantabria region (Northern Spain). *Journal of Environmental Monitoring*, 12(7), 1451–1458. <https://doi.org/10.1039/B926740A>.
- Awadh, S. M., Al-Kilabi, J. A., & Khaleefah, N. H. (2015). Comparison the geochemical background, threshold and anomaly with pollution indices in the assessment of soil pollution: Al-Hawija, north of Iraq case study. *International Journal of Science and Research*, 4(7), 2357–2363.
- Barkouch, Y., Sedki, A., & Ponesu, A. (2007). A new approach for understanding lead transfer in agricultural soil. *Water, Air, and Soil Pollution*, 186(1–4), 3–13. <https://doi.org/10.1007/s11270-007-9450-9>.
- Basta, N. T., Ryan, J. A., & Chaney, R. L. (2005). Trace element chemistry in residual-treated soil. *Journal of Environmental Quality*, 34(1), 49–63. <https://doi.org/10.2134/jeq2005.0049dup>.
- Bhattacharya, A., Routh, J., Jacks, G., Bhattacharya, P., & Mörth, M. (2006). Environmental assessment of abandoned mine tailings in Adak, Västerbotten district (northern Sweden). *Applied Geochemistry*, 21(10), 1760–1780. <https://doi.org/10.1016/j.apgeochem.2006.06.011>.
- Biasioli, M., Barberis, R., & Ajmone-Marsan, F. (2006). The influence of a large city on some soil properties and metals content. *Science of the Total Environment*, 356(1–3), 154–164. <https://doi.org/10.1016/j.scitotenv.2005.04.033>.
- Biasioli, M., Grčman, H., Kralj, T., Madrid, F., Díaz-Barrientos, E., & Ajmone-Marsan, F. (2007). Potentially toxic elements contamination in urban soils. *Journal of Environmental Quality*, 36, 70–79. <https://doi.org/10.2134/jeq2006.0254>.
- Birch, G. F., Vanderhayden, M., & Olmos, M. (2011). The nature and distribution of metals in soils of the Sydney estuary catchment, Australia. *Water, Air and Soil Pollution*, 216(1–4), 581–604 <http://10.03.239/s11270-010-0555-1>.
- Birke, M., & Rauch, U. (2000). Urban geochemistry: Investigations in the Berlin metropolitan area. *Environmental Geochemistry and Health*, 22(3), 233–248. <https://doi.org/10.1023/A:1026554308673>.
- Brady, J. P., Ayoko, G. A., Martens, W. N., & Goonetilleke, A. (2014). Temporal trends and bioavailability assessment of heavy metals in the sediments of Deception Bay,

- Queensland, Australia. *Marine Pollution Bulletin*, 89(1), 464–472. <https://doi.org/10.1016/j.marpolbul.2014.09.030>.
- Brevik, E. C., & Burgess, L. C. (2012). *Soils and human health*. CRC Press.
- Caeiro, S., Costa, M. H., Ramos, T. B., Fernandes, F., Silveira, N., Coimbra, A., Medeiros, G., & Painho, M. (2005). Assessing heavy metal contamination in Sado estuary sediment: an index analysis approach. *Ecological Indicators*, 5(2), 151–169. <https://doi.org/10.1016/j.ecolind.2005.02.001>.
- Cantinho, P., Matos, M., Trancoso, M. A., & dos Santos, M. M. C. (2016). Behaviour and fate of metals in urban wastewater treatment plants: a review. *International Journal of Environmental Science and Technology*, 13(1), 359–386. <https://doi.org/10.1007/s13762-015-0887-x>.
- Cappuyns, V., Swennen, R., & Verhulst, J. (2004). Assessment of acid neutralizing capacity and potential mobilisation of trace metals from land-disposed dredged sediments. *Science of the Total Environment*, 333(1), 233–247. <https://doi.org/10.1016/j.scitotenv.2004.05.007>.
- Caroli, S. (2000). Elements in food analysis and classification. Warsaw: Proceedings of the 2nd International Conference on Trace Elements.
- Chai, Y., Guo, J., Chai, S., Cai, J., Xue, L., & Zhang, Q. (2015). Source identification of eight heavy metals in grassland soils by multivariate analysis from the Baicheng–Songyuan area, Jilin Province, Northeast China. *Chemosphere*, 134(Supplement C), 67–75. <https://doi.org/10.1016/j.chemosphere.2015.04.008>.
- Chaney, R. L., Ryan, J. A., Kukier, U., Brown, S. L., Siebielec, G., Malik, M., & Angle, J. S. (2001). Heavy metal aspects of compost use. In *Compost utilization in horticultural cropping systems* (pp. 327–363). CRC Press.
- Chen, T. B., Zheng, Y. M., Lei, M., Huang, Z. C., Wu, H. T., Chen, H., Fan, K. K., Yu, K., Wu, X., & Tian, Q. Z. (2005). Assessment of heavy metal pollution in surface soils of urban parks in Beijing, China. *Chemosphere*, 60(4), 542–551. <https://doi.org/10.1016/j.chemosphere.2004.12.072>.
- Chen, H., Teng, Y., Lu, S., Wang, Y., & Wang, J. (2015). Contamination features and health risk of soil heavy metals in China. *Science of The Total Environment*, 512(Supplement C), 143–153. <https://doi.org/10.1016/j.scitotenv.2015.01.025>.
- Chen, H., Teng, Y., Lu, S., Wang, Y., Wu, J., & Wang, J. (2016). Source apportionment and health risk assessment of trace metals in surface soils of Beijing metropolitan, China. *Chemosphere*, 144(Supplement C), 1002–1011. <https://doi.org/10.1016/j.chemosphere.2015.09.081>.
- Cheng, J. L., Shi, Z., & Zhu, Y. W. (2007). Assessment and mapping of environmental quality in agricultural soils of Zhejiang Province, China. *Journal of Environmental Sciences*, 19(1), 50–54. [https://doi.org/10.1016/S1001-0742\(07\)60008-4](https://doi.org/10.1016/S1001-0742(07)60008-4).
- Cheng, H., & Hu, Y. (2012). Mercury in municipal solid waste in China and its control: a review. *Environmental Science and Technology*, 46(2), 593–605. <https://doi.org/10.1021/es2026517>.
- Cheng, H., Li, M., Zhao, C., Li, K., Peng, M., Qin, A., & Cheng, X. (2014). Overview of trace metals in the urban soil of 31 metropolises in China. *Journal of Geochemical Exploration*, 139(Supplement C), 31–52. <https://doi.org/10.1016/j.gexplo.2013.08.012>.
- Christophoridis, C., Dedepsidis, D., & Fytianos, K. (2009). Occurrence and distribution of selected heavy metals in the surface sediments of Thermaikos Gulf, N. Greece. Assessment using pollution indicators. *Journal of Hazardous Materials*, 168(2–3), 1082–1091. <https://doi.org/10.1016/j.jhazmat.2009.02.154>.
- Clemente, R., Walker, D. J., Roig, A., & Pilar Bernal, M. (2003). Heavy metal bioavailability in a soil affected by mineral sulphides contamination following the mine spillage at Aznalcóllar (Spain). *Biodegradation*, 14(3), 199–205. <https://doi.org/10.1023/A:1024288505979>.
- Damek-Poprawa, M., & Sawicka-Kapusta, K. (2003). Damage to the liver, kidney, and testis with reference to burden of heavy metals in yellow-necked mice from areas around steelworks and zinc smelters in Poland. *Toxicology*, 186, 1–2, 1–10. [https://doi.org/10.1016/S0300-483X\(02\)00595-4](https://doi.org/10.1016/S0300-483X(02)00595-4).
- Davydova, S. L., Tagasov, V. I. (2004). Petroleum oil products in environment. 36. Study book. – M.: RUDN.
- De Vries, W., Schütze, G., Lofts, S., Tipping, E., Meili, M., Römkens, P., Groenenberg, J. E. (2005). Calculation of critical loads for cadmium, lead and mercury; background document to a mapping manual on critical loads of cadmium, lead and mercury. Alterra, Wageningen.
- Díaz Rizo, O., Fonticiella Morell, D., Arado López, J. O., Borrell Muñoz, J. L., D’Alessandro Rodríguez, K., & López Pino, N. (2013). Spatial distribution and contamination assessment of heavy metals in urban Topsoils from Las Tunas City, Cuba. *Bulletin of Environmental Contamination and Toxicology*, 91(1), 29–35. <https://doi.org/10.1007/s00128-013-1020-9>.
- Doležalová Weissmannová, H., Pavlovský, J., & Chovanec, P. (2015). Heavy metal contaminations of urban soils in Ostrava, Czech Republic: assessment of metal pollution and using principal component analysis. *International Journal of Environmental Research*, 9(2), 683–696.
- Driscoll, C. T., Mason, R. P., Chan, H. M., Jacob, D. J., & Pirrone, N. (2013). Mercury as a global pollutant: sources, pathways, and effects. *Environmental Science and Technology*, 47(10), 4967–4983. <https://doi.org/10.1021/es305071v>.
- Elias, P., & Gbadegehin, A. (2011). Spatial relationships of urban land use, soils and heavy metal concentrations in Lagos mainland area. *Journal of Applied Sciences and Environmental Management*, 15(2), 391–399.
- Eriksson, J. (2001). Concentrations of 61 trace elements in sewage sludge, farmyard manure, mineral fertiliser, precipitation and in oil and crops (vol. 5159). Swedish Environmental Protection Agency, Stockholm.
- Esmaeilzadeh, M., Karbassi, A., & Moattar, F. (2016). Assessment of metal pollution in the Anzali wetland sediments using chemical partitioning method and pollution indices. *Acta Oceanologica Sinica*, 35(10), 28–36. <https://doi.org/10.1007/s13131-016-0920-z>.
- European Communities. (2006). Proposal for a directive of the European Parliament and of the council establishing a framework for the protection of soil and amending directive 2004/35/EC.COM(2006) 232.2004/35/EC.COM(2006) 232. Brussels: European Commission.
- Fan, J., He, Z., Ma, L. Q., & Stoffella, P. J. (2011). Accumulation and availability of copper in citrus grove soils as affected by fungicide application. *Journal of Soils and Sediments*, 11(4), 639–648. <https://doi.org/10.1007/s11368-011-0349-0>.

- Fernández-Ondoño, E., Bacchetta, G., Lallena, A. M., Navarro, F. B., Ortiz, I., Jiménez, M. N. (2017). Use of BCR sequential extraction procedures for soils and plant metal transfer predictions in contaminated mine tailings in Sardinia. *Journal of Geochemical Exploration*, 172(Supplement C), 133–141. doi:<https://doi.org/10.1016/j.gexplo.2016.09.013>.
- FOREGS. (2005). Forum of the European geological survey directors. *Geochemical Atlas of Europe*. Espoo: Geological Survey of Finland.
- Gao, X., & Chen, C. T. A. (2012). Heavy metal pollution status in surface sediments of the coastal Bohai Bay. *Water Research*, 46(6), 1901–1911. <https://doi.org/10.1016/j.watres.2012.01.007>.
- Gao, H., Bai, J., Xiao, R., Liu, P., Jiang, W., & Wang, J. (2013). Levels, sources and risk assessment of trace elements in wetland soils of a typical shallow freshwater lake, China. *Stochastic Environmental Research and Risk Assessment*, 27(1), 275–284. <https://doi.org/10.1007/s00477-012-0587-8>.
- Gleyzes, C., Tellier, S., & Astruc, M. (2002). Fractionation studies of trace elements in contaminated soils and sediments: A review of sequential extraction procedures. *TrAC Trends in Analytical Chemistry*, 21(6–7), 451–467. [https://doi.org/10.1016/S0165-9936\(02\)00603-9](https://doi.org/10.1016/S0165-9936(02)00603-9).
- Gonçalves Jr., A. C., Nacke, H., Schwantes, D., & Coelho, G. F. (2014). Heavy metal contamination in Brazilian agricultural soils due to application of fertilizers, Ch. 04. In M. C. Hernandez-Soriano (Ed.), *Environmental risk assessment of soil contamination*. Rijeka: InTech. <https://doi.org/10.5772/57268>.
- Gong, Q., Deng, J., Xiang, Y., Wang, Q., & Yang, L. (2008). Calculating pollution indices by heavy metals in ecological geochemistry assessment and a case study in parks of Beijing. *Journal of China University of Geosciences*, 19(3), 230–241. [https://doi.org/10.1016/S1002-0705\(08\)60042-4](https://doi.org/10.1016/S1002-0705(08)60042-4).
- Gu, Y. G., Gao, Y. P., & Lin, Q. (2016). Contamination, bioaccessibility and human health risk of heavy metals in exposed-lawn soils from 28 urban parks in southern China's largest city, Guangzhou. *Applied Geochemistry*, 67, 52–58. <https://doi.org/10.1016/j.apgeochem.2016.02.004>.
- Guan, Y., Shao, C., & Ju, M. (2014). Heavy metal contamination assessment and partition for industrial and mining gathering areas. *International Journal of Environmental Research and Public Health*, 11(7), 7286–7303. <https://doi.org/10.3390/ijerph110707286>.
- Guillén, M. T., Delgado, J., Albanese, S., Nieto, J. M., Lima, A., & De Vivo, B. (2011). Environmental geochemical mapping of Huelva municipality soils (SW Spain) as a tool to determine background and baseline values. *Journal of Geochemical Exploration*, 109(1–3), 59–69. <https://doi.org/10.1016/j.gexplo.2011.03.003>.
- Hakanson, L. (1980). An ecological risk index for aquatic pollution control: a sedimentological approach. *Water Research*, 14(8), 975–1001. [https://doi.org/10.1016/0043-1354\(80\)90143-8](https://doi.org/10.1016/0043-1354(80)90143-8).
- Han, F. X., Su, Y., Monts, D. L., Waggoner, C. A., & Plodinec, M. J. (2006). Binding, distribution, and plant uptake of mercury in a soil from Oak Ridge, Tennessee, USA. *Science of the Total Environment*, 368(2), 753–768. <https://doi.org/10.1016/j.scitotenv.2006.02.026>.
- He, Z. L., Xu, H. P., Zhu, Y. M., Yang, X. E., & Chen, G. C. (2005a). Adsorption-desorption characteristics of cadmium in variable charge soils. *Journal of Environmental Science and Health, Part A*, 40(4), 805–822. <https://doi.org/10.1081/ESE-200048273>.
- He, Z. L., Yang, X. E., & Stoffella, P. J. (2005b). Trace elements in agroecosystems and impacts on the environment. *Journal of Trace Elements in Medicine and Biology*, 19(2–3), 125–140. <https://doi.org/10.1016/j.jtemb.2005.02.010>.
- Hijmans, R. J., Cameron, S. E., Parra, J. L., Jones, P. G., & Jarvis, A. (2005). Very high resolution interpolated climate surfaces for global land areas. *International Journal of Climatology*, 25(15), 1965–1978. <https://doi.org/10.1002/joc.1276>.
- Hong-gui, D., Teng-feng, G., Ming-hui, L., & Xu, D. (2012). Comprehensive assessment model on heavy metal pollution in soil. *International Journal of Electrochemical Science*, 7(6), 5286–5296.
- Hou, D., O'Connor, D., Nathanail, P., Tian, L., & Ma, Y. (2017). Integrated GIS and multivariate statistical analysis for regional scale assessment of heavy metal soil contamination: a critical review. *Environmental Pollution*. <https://doi.org/10.1016/j.envpol.2017.07.021>.
- Hu, Y., Liu, X., Bai, J., Shih, K., Zeng, E. Y., & Cheng, H. (2013). Assessing heavy metal pollution in the surface soils of a region that had undergone three decades of intense industrialization and urbanization. *Environmental Science and Pollution Research*, 20(9), 6150–6159. <https://doi.org/10.1007/s11356-013-1668-z>.
- Inengite, A. K., Abasi, C. Y., & Walter, C. (2015). Application of pollution indices for the assessment of heavy metal pollution in flood impacted soil. *International Research Journal of Pure and Applied Chemistry*, 8(3), 175–189. <https://doi.org/10.9734/IRJPAC/2015/17859>.
- Islam, E. U., Yang, X., He, Z., & Mahmood, Q. (2007). Assessing potential dietary toxicity of heavy metals in selected vegetables and food crops. *Journal of Zhejiang University. Science. B*, 8(1), 1–13. <https://doi.org/10.1631/jzus.2007.B0001>.
- Ivezić, V., Lončarić, Z., Engler, M., Kerovec, D., & Ram Singh, B. (2013). Comparison of different extraction methods representing available and total concentrations of Cd, Cu, Fe, Mn and Zn in soil. *Poljoprivreda*, 19, 53–58.
- Ji, Y., Feng, Y., Wu, J., Zhu, T., Bai, Z., & Duan, C. (2008). Using geoaccumulation index to study source profiles of soil dust in China. *Journal of Environmental Sciences*, 20(5), 571–578. [https://doi.org/10.1016/S1001-0742\(08\)62096-3](https://doi.org/10.1016/S1001-0742(08)62096-3).
- Ji, K., Kim, J., Lee, M., Park, S., Kwon, H. J., Cheong, H. K., Jang, J. Y., Kim, D. S., Yu, S., Lee, K. Y., Yang, S. O., Jung, I. J., Yang, W. H., Peak, D. H., Hong, Y. C., & Choi, K. (2013). Assessment of exposure to heavy metals and health risks among residents near abandoned metal mines in Goseong, Korea. *Environmental Pollution*, 178(Supplement C), 322–328. <https://doi.org/10.1016/j.envpol.2013.03.031>.
- Jiang, L. Y., Yang, X. E., & He, Z. L. (2004). Growth response and phytoextraction of copper at different levels in soils by *Elsholtzia splendens*. *Chemosphere*, 55(9), 1179–1187. <https://doi.org/10.1016/j.chemosphere.2004.01.026>.
- Jiang, Y., Wang, X., Wu, M., Sheng, G., & Fu, J. (2011). Contamination, source identification, and risk assessment of polycyclic aromatic hydrocarbons in agricultural soil of Shanghai, China. *Environmental Monitoring and Assessment*, 183(1), 139–150. <https://doi.org/10.1007/s10661-011-1913-1>.

- Jiang, X., Lu, W. X., Zhao, H. Q., Yang, Q. C., & Yang, Z. P. (2014). Potential ecological risk assessment and prediction of soil heavy-metal pollution around coal gangue dump. *Natural Hazards and Earth System Sciences*, 14(6), 1599–1610.
- Jing, Y. D., He, Z. L., Yang, X. E., & Sun, C. Y. (2008). Evaluation of soil tests for plant available mercury in a soil–crop rotation system. *Communications in Soil Science and Plant Analysis*, 39(19–20), 3032–3046. <https://doi.org/10.1080/00103620802432907>.
- Kaasalainen, M., & Yli-Halla, M. (2003). Use of sequential extraction to assess metal partitioning in soils. *Environmental Pollution*, 126(2), 225–233. [https://doi.org/10.1016/S0269-7491\(03\)00191-X](https://doi.org/10.1016/S0269-7491(03)00191-X).
- Kabata-Pendias, A. (2011). *Trace elements of soils and plants* (fourth ed., pp. 28–534). USA: CRC Press, Taylor & Francis Group, LLC.
- Karbassi, A. R., Tajziehchi, S., & Afshar, S. (2015). An investigation on heavy metals in soils around oil field area. *Global Journal of Environmental Science and Management*, 1(4), 275–282. <https://doi.org/10.7508/gjesm.2015.04.002>.
- Karim, Z., Qureshi, B. A., Mumtaz, M. (2015). Geochemical baseline determination and pollution assessment of heavy metals in urban soils of Karachi, Pakistan. *Ecological Indicators*, 48(Supplement C), 358–364. doi:<https://doi.org/10.1016/j.ecolind.2014.08.032>.
- Karimi Nezhad, M. T., Mohammadi, K., Gholami, A., Hani, A., & Shariati, M. S. (2014). Cadmium and mercury in topsoils of Babagorogor watershed, western Iran: Distribution, relationship with soil characteristics and multivariate analysis of contamination sources. *Geoderma*, 219(Supplement C), 177–185. <https://doi.org/10.1016/j.geoderma.2013.12.021>.
- Ke, X., Gui, S., Huang, H., Zhang, H., Wang, C., & Guo, W. (2017). Ecological risk assessment and source identification for heavy metals in surface sediment from the Liaohe River protected area, China. *Chemosphere*, 175(Supplement C), 473–481. <https://doi.org/10.1016/j.chemosphere.2017.02.029>.
- Kelepertzis, E. (2014). Accumulation of heavy metals in agricultural soils of Mediterranean: insights from Argolida basin, Peloponnese, Greece. *Geoderma*, 221(Supplement C), 82–90. <https://doi.org/10.1016/j.geoderma.2014.01.007>.
- Khan, S., Cao, Q., Zheng, Y. M., Huang, Y. Z., & Zhu, Y. G. (2008). Health risks of heavy metals in contaminated soils and food crops irrigated with wastewater in Beijing, China. *Environmental Pollution*, 152(3), 686–692. <https://doi.org/10.1016/j.envpol.2007.06.056>.
- Kibble, A., & Russell, D. (2010). Contaminated land and health. In R. L. Maynard et al. (Eds.), *Environmental medicine* (pp. 565–573). Boca Raton, Florida, USA: CRC Press.
- Kowalska, J., Mazurek, R., Gąsiorek, M., Setlak, M., Zaleski, T., & Waroszewski, J. (2016). Soil pollution indices conditioned by medieval metallurgical activity – A case study from Krakow (Poland). *Environmental Pollution*, 218, 1023–1036. <https://doi.org/10.1016/j.envpol.2016.08.053>.
- Kuusisto-Hjort, P., & Hjort, J. (2013). Land use impacts on trace metal concentrations of suburban stream sediments in the Helsinki region, Finland. *Science of The Total Environment*, 456(Supplement C), 222–230. <https://doi.org/10.1016/j.scitotenv.2013.03.086>.
- Lado, L. R., Hengl, T., & Reuter, H. I. (2008). Heavy metals in European soils: a geostatistical analysis of the FOREGS geochemical database. *Geoderma*, 148(2), 189–199. <https://doi.org/10.1016/j.geoderma.2008.09.020>.
- Lee, C. S., Li, X., Shi, W., Cheung, S. C., & Thornton, I. (2006). Metal contamination in urban, suburban, and country park soils of Hong Kong: a study based on GIS and multivariate statistics. *Science of the Total Environment*, 356(1), 45–61. <https://doi.org/10.1016/j.scitotenv.2005.03.024>.
- Lee, C. S. L., Li, X. D., Zhang, G., Li, J., Ding, A. J., & Wang, T. (2007). Heavy metals and Pb isotopic composition of aerosols in urban and suburban areas of Hong Kong and Guangzhou, South China—Evidence of the long-range transport of air contaminants. *Atmospheric Environment*, 41(2), 432–447. <https://doi.org/10.1016/j.atmosenv.2006.07.035>.
- Li, Z., Ma, Z., van der Kuijp, T. J., Yuan, Z., & Huang, L. (2014). A review of soil heavy metal pollution from mines in China: pollution and health risk assessment. *Science of the Total Environment*, 468(Supplement C), 843–853. <https://doi.org/10.1016/j.scitotenv.2013.08.090>.
- Li, J., Jia, C., Lu, Y., Tang, S., & Shim, H. (2015a). Multivariate analysis of heavy metal leaching from urban soils following simulated acid rain. *Microchemical Journal*, 122(Supplement C), 89–95. <https://doi.org/10.1016/j.microc.2015.04.015>.
- Li, H., Shi, A., & Zhang, X. (2015b). Particle size distribution and characteristics of heavy metals in road-deposited sediments from Beijing Olympic Park. *Journal of Environmental Sciences*, 32(Supplement C), 228–237. <https://doi.org/10.1016/j.jes.2014.11.014>.
- Liang, J., Chen, C., Song, X., Han, Y., & Liang, Z. (2011). Assessment of heavy metal pollution in soil and plants from Dunhua sewage irrigation area. *International Journal of Electrochemical Science*, 6(2011), 5314–5324.
- Liao, J., Wen, Z., Ru, X., Chen, J., Wu, H., & Wei, C. (2016). Distribution and migration of heavy metals in soil and crops affected by acid mine drainage: public health implications in Guangdong Province, China. *Ecotoxicology and Environmental Safety*, 124(Supplement C), 460–469. <https://doi.org/10.1016/j.ecoenv.2015.11.023>.
- Likuku, A. S., Mmolawa, K. B., & Gaboutloeloe, G. K. (2013). Assessment of heavy metal enrichment and degree of contamination around the copper-nickel mine in the Selebi Phikwe region, Eastern Botswana. *Environment and Ecology Research*, 1(2), 32–40. [10.13189/eer.2013.010202](https://doi.org/10.13189/eer.2013.010202).
- Lim, H. S., Lee, J. S., Chon, H. T., Sager, M. (2008). Heavy metal contamination and health risk assessment in the vicinity of the abandoned Songcheon Au–Ag mine in Korea. *Journal of Geochemical Exploration*, 96(2–3), 223–230. doi:<https://doi.org/10.1016/j.gexplo.2007.04.008>.
- Lin, Y. C., Chang-Chien, G. P., Chiang, P. C., Chen, W. H., & Lin, Y. C. (2013). Multivariate analysis of heavy metal contaminants in seawater and sediments from a heavily industrialized harbor in Southern Taiwan. *Marine Pollution Bulletin*, 76(1), 266–275. <https://doi.org/10.1016/j.marpolbul.2013.08.027>.
- Linde, M., Bengtsson, H., & Öborn, I. (2001). Concentrations and pools of heavy metals in urban soils in Stockholm, Sweden. *Water, Air and Soil Pollution: Focus*, 1(3), 83–101. <https://doi.org/10.1023/A:1017599920280>.

- Liu, W., Zhao, J., Ouyang, Z., Söderlund, L., & Liu, G. (2005). Impacts of sewage irrigation on heavy metal distribution and contamination in Beijing, China. *Environment International*, 31(6), 805–812. <https://doi.org/10.1016/j.envint.2005.05.042>.
- Liu, R., Wang, M., Chen, W., & Peng, C. (2016). Spatial pattern of heavy metals accumulation risk in urban soils of Beijing and its influencing factors. *Environmental Pollution*, 210, 174–181. <https://doi.org/10.1016/j.envpol.2015.11.044>.
- Ljung, K., Otabbong, E., & Selinus, O. (2006a). Natural and anthropogenic metal inputs to soils in urban Uppsala, Sweden. *Environmental Geochemistry and Health*, 28(4), 353–364. <https://doi.org/10.1007/s10653-005-9031-z>.
- Ljung, K., Selinus, O., & Otabbong, E. (2006b). Metals in soils of children's urban environments in the small northern European city of Uppsala. *Science of the Total Environment*, 366(2), 749–759. <https://doi.org/10.1016/j.scitotenv.2005.09.073>.
- Long, E. R., MacDonald, D. D., Severn, C. G., & Hong, C. B. (2000). Classifying probabilities of acute toxicity in marine sediments with empirically derived sediment quality guidelines. *Environmental Toxicology and Chemistry*, 19(10), 2598–2601. <https://doi.org/10.1002/etc.5620191028>.
- Long, E. R., Ingersoll, C. G., & MacDonald, D. D. (2006). Calculation and uses of mean sediment quality guideline quotients: A critical review. *Environmental Science and Technology*, 40(6), 1726–1736. <https://doi.org/10.1021/es058012d>.
- Long, Y. Y., Hu, L. F., Fang, C. R., Wu, Y. Y., & Shen, D. S. (2009). An evaluation of the modified BCR sequential extraction procedure to assess the potential mobility of copper and zinc in MSW. *Microchemical Journal*, 91(1), 1–5. <https://doi.org/10.1016/j.microc.2008.05.006>.
- Loska, K., Wiechula, D., Barska, B., Cebula, E., & Chojnecka, A. (2003). Assessment of arsenic enrichment of cultivated soils in southern Poland. *Polish Journal of Environmental Studies*, 12(2), 187. <http://search.ebscohost.com/login.aspx?direct=true&db=a9h&AN=9467114&lang=cs&site=eds-live>.
- Loska, K., Wiechula, D., & Korus, I. (2004). Metal contamination of farming soils affected by industry. *Environment International*, 30(2), 159–165. [https://doi.org/10.1016/S0160-4120\(03\)00157-0](https://doi.org/10.1016/S0160-4120(03)00157-0).
- Lu, X., Wang, L., Lei, K., Huang, J., & Zhai, Y. (2009). Contamination assessment of copper, lead, zinc, manganese and nickel in street dust of Baoji, NW China. *Journal of Hazardous Materials*, 161(2–3), 1058–1062. <https://doi.org/10.1016/j.jhazmat.2008.04.052>.
- Lu, S. G., & Bai, S. Q. (2010). Contamination and potential mobility assessment of heavy metals in urban soils of Hangzhou, China: Relationship with different land uses. *Environmental Earth Sciences*, 60(7), 1481–1490. <https://doi.org/10.1007/s12665-009-0283-2>.
- Luo, X., Yu, S., Zhu, Y., & Li, X. (2012). Trace metal contamination in urban soils of China. *Science of the Total Environment*, 421, 17–30. <https://doi.org/10.1016/j.scitotenv.2011.04.020>.
- Ma, X., Zuo, H., Tian, M., Zhang, L., Meng, J., Zhou, X., Min, N., Chang, X., & Liu, Y. (2016). Assessment of heavy metals contamination in sediments from three adjacent regions of the Yellow River using metal chemical fractions and multivariate analysis techniques. *Chemosphere*, 144(Supplement C), 264–272. <https://doi.org/10.1016/j.chemosphere.2015.08.026>.
- Manta, D. S., Angelone, M., Bellanca, A., Neri, R., & Sprovieri, M. (2002). Heavy metals in urban soils: a case study from the city of Palermo (Sicily), Italy. *Science of the Total Environment*, 300(1), 229–243. [https://doi.org/10.1016/S0048-9697\(02\)00273-5](https://doi.org/10.1016/S0048-9697(02)00273-5).
- Markiewicz-Patkowska, J., Hursthouse, A., & Przybyla-Kij, H. (2005). The interaction of heavy metals with urban soils: Sorption behaviour of Cd, Cu, Cr, Pb and Zn with a typical mixed brownfield deposit. *Environment International*, 31(4), 513–521. <https://doi.org/10.1016/j.envint.2004.09.004>.
- McBride, M. B., & Cherney, J. (2004). Molybdenum, sulfur, and other trace elements in farm soils and forages after sewage sludge application. *Communications in Soil Science and Plant Analysis*, 35(3–4), 517–535. <https://doi.org/10.1081/CSS-120029729>.
- McBride, M. B. (2013). Arsenic and lead uptake by vegetable crops grown on historically contaminated orchard soils. *Applied and Environmental Soil Science*, 2013.
- McCready, S., Birch, G. F., & Long, E. R. (2006). Metallic and organic contaminants in sediments of Sydney harbour, Australia and vicinity—a chemical dataset for evaluating sediment quality guidelines. *Environment International*, 32(4), 455–465. <https://doi.org/10.1016/j.envint.2005.10.006>.
- Ministry of Environment (1994) Regulation of the Ministry of Environment No. 13/1994 Coll. of Czech Republic. The protection of land resources in Czech Republic. The collection of Laws of Czech Republic, 1–12.
- McLaren, R. G., Clucas, L. M., & Taylor, M. D. (2005). Leaching of macronutrients and metals from undisturbed soils treated with metal-spiked sewage sludge. 3. Distribution of residual metals. *Soil Research*, 43(2), 159–170. <https://doi.org/10.1071/SR04109>.
- Mohamed, T. A., Mohamed, M. A., Rabeiy, R., & Ghandour, M. A. (2014). Application of pollution indices for evaluation of heavy metals in soil close to phosphate fertilizer plant, Assiut, Egypt. *Assiut University Bulletin Environmental Research*, 17(1), 45–55.
- Morgan, R. (2012). Soil, heavy metals, and human health. In *Soils and human health* (pp. 59–82). CRC Press.
- Morton-Bermea, O., Hernández-Álvarez, E., González-Hernández, G., Romero, F., Lozano, R., & Beramendi-Orosco, L. E. (2009). Assessment of heavy metal pollution in urban topsoils from the metropolitan area of Mexico City. *Journal of Geochemical Exploration*, 101(3), 218–224. <https://doi.org/10.1016/j.gexplo.2008.07.002>.
- Morton-Bermea, O., Hernández-Álvarez, E., Lozano, R., Guzmán-Morales, J., & Martínez, G. (2010). Spatial distribution of heavy metals in top soils around the industrial facilities of Cromatos de México, Tultitlan Mexico. *Bulletin of Environmental Contamination and Toxicology*, 85(5), 520–524. <https://doi.org/10.1007/s00128-010-0124-8>.
- Mukhopadhyay, S., Mastro, R. E., Yadav, A., George, J., Ram, L. C., & Shukla, S. P. (2016). Soil quality index for evaluation of reclaimed coal mine spoil. *Science of The Total Environment*, 542(Part A), 540–550. <https://doi.org/10.1016/j.scitotenv.2015.10.035>.

- Muller, G. (1981). The heavy metal pollution of the sediments of Neckars and its tributary: a stocktaking. *Chemiker-Zeitung*, *105*, 157–164.
- Muller, G. (1969). Index of geoaccumulation in sediments of the Rhine River. *GeoJournal*, *2*, 108–118.
- Nieto, J. M., Sarmiento, A. M., Ollas, M., Canovas, C. R., Riba, I., Kalman, J., & Delvalls, T. A. (2007). Acid mine drainage pollution in the Tinto and Odiel rivers (Iberian Pyrite Belt, SW Spain) and bioavailability of the transported metals to the Huelva estuary. *Environment International*, *33*(4), 445–455. <https://doi.org/10.1016/j.envint.2006.11.010>.
- Obiora, S. C., Chukwu, A., & Davies, T. C. (2016). Heavy metals and health risk assessment of arable soils and food crops around Pb–Zn mining localities in Enyigba, southeastern Nigeria. *Journal of African Earth Sciences*, *116*(Supplement C), 182–189. <https://doi.org/10.1016/j.jafrearsci.2015.12.025>.
- Ogunkunle, C. O., & Fatoba, P. O. (2013). Pollution loads and the ecological risk assessment of soil heavy metals around a mega cement factory in southwest Nigeria. *Polish Journal of Environmental Studies*, *22*(2), 487–493.
- Oje, O. A., Uzoegwu, P. N., Onwurah, I. N. E., & Nwodo, U. U. (2010). Environmental pollution levels of lead and zinc in Ishiagu and Uburu communities of Ebonyi State, Nigeria. *Bulletin of Environmental Contamination and Toxicology*, *85*(3), 313–317. <https://doi.org/10.1007/s00128-010-0082-1>.
- Oliva, S. R., & Espinosa, A. J. F. (2007). Monitoring of heavy metals in topsoils, atmospheric particles and plant leaves to identify possible contamination sources. *Microchemical Journal*, *86*(1), 131–139. <https://doi.org/10.1016/j.microc.2007.01.003>.
- Ololade, I. A. (2014). An assessment of heavy-metal contamination in soils within auto-mechanic workshops using enrichment and contamination factors with geoaccumulation indexes. *Journal of Environmental Protection*, 2014.
- Omran, E. S. E. (2016). Environmental modelling of heavy metals using pollution indices and multivariate techniques in the soils of Bahr el Baqar, Egypt. *Modeling Earth Systems and Environment*, *2*(3), 119. <https://doi.org/10.1007/s40808-016-0178-7>.
- Pagotto, C., Remy, N., Legret, M., & Le Cloirec, P. (2001). Heavy metal pollution of road dust and roadside soil near a major rural highway. *Environmental Technology*, *22*(3), 307–319.
- Pam, A. A., Sha’Ato, R., & Offem, J. O. (2013). Evaluation of heavy metals in soils around auto mechanic workshop clusters in Gboko and Makurdi, Central Nigeria. *Journal of Environmental Chemistry and Ecotoxicology*, *5*(11), 298–306.
- Pan, L., Ma, J., Wang, X., & Hou, H. (2016). Heavy metals in soils from a typical county in Shanxi Province, China: levels, sources and spatial distribution. *Chemosphere*, *148*(Supplement C), 248–254. <https://doi.org/10.1016/j.chemosphere.2015.12.049>.
- Pastor, J., & Hernández, A. J. (2012). Heavy metals, salts and organic residues in old solid urban waste landfills and surface waters in their discharge areas: determinants for restoring their impact. *Journal of Environmental Management*, *95*(Supplement), S42–S49. <https://doi.org/10.1016/j.jenvman.2011.06.048>.
- Paz-Ferreiro, J., & Fu, S. (2016). Biological indices for soil quality evaluation: perspectives and limitations. *Land Degradation and Development*, *27*(1), 14–25. <https://doi.org/10.1002/ldr.2262>.
- Pejman, A., Nabi Bidhendi, G., Ardestani, M., Saeedi, M., & Baghvand, A. (2015). A new index for assessing heavy metals contamination in sediments: a case study. *Ecological Indicators*, *58*, 365–373. <https://doi.org/10.1016/j.ecolind.2015.06.012>.
- Peña-Icart, M., Pereira-Filho, E. R., Lopes Fialho, L., Nóbrega, J. A., Alonso-Hernández, C., Bolaños-Alvarez, Y., & Pomares-Alfonso, M. S. (2017). Combining contamination indexes, sediment quality guidelines and multivariate data analysis for metal pollution assessment in marine sediments of Cienfuegos Bay, Cuba. *Chemosphere*, *168*(Supplement C), 1267–1276. <https://doi.org/10.1016/j.chemosphere.2016.10.053>.
- Poggio, L., Vrščaj, B., Schulin, R., Hepperle, E., & Ajmone-Marsan, F. (2009). Metals pollution and human bioaccessibility of topsoils in Grugliasco (Italy). *Environmental Pollution*, *157*(2), 680–689. <https://doi.org/10.1016/j.envpol.2008.08.009>.
- Pouyat, R. V., Yesilonis, I. D., Russell-Anelli, J., & Neerchal, N. K. (2007). Soil chemical and physical properties that differentiate urban land-use and cover types. *Soil Science Society of America*, *71*(3).
- Posch, M., Slootweg, J., Hettelingh, J. P. (2005). European critical loads and dynamic modelling: CCE status report Geneva: UNECE.
- Qing, X., Yutong, Z., & Shenggaio, L. (2015). Assessment of heavy metal pollution and human health risk in urban soils of steel industrial city (Anshan), Liaoning, Northeast China. *Ecotoxicology and Environmental Safety*, *120*, 377–385. <https://doi.org/10.1016/j.ecoenv.2015.06.019>.
- Qingjie, G., Jun, D., Yunchuan, X., Qingfei, W., & Liqiang, Y. (2008). Calculating pollution indices by heavy metals in ecological geochemistry assessment and a case study in parks of Beijing. *Journal of China University of Geosciences*, *19*(3), 230–241. [https://doi.org/10.1016/S1002-0705\(08\)60042-4](https://doi.org/10.1016/S1002-0705(08)60042-4).
- Qu, J., Yuan, V., Wang, X., Shao, P., & Cong, Q. (2004). Distribution of heavy metals, chemical fractions and ecological risks around a molybdenum mine in Liaoning Province, China. *Vitamins and Trace Elements*, *1*(3), 1–6.
- Rahman, M. S., Saha, N., & Molla, A. H. (2014). Potential ecological risk assessment of heavy metal contamination in sediment and water body around Dhaka export processing zone, Bangladesh. *Environmental Earth Sciences*, *71*(5), 2293–2308. <https://doi.org/10.1007/s12665-013-2631-5>.
- Rahmanipour, F., Marzaioli, R., Bahrami, H. A., Fereidouni, Z., & Bandarabadi, S. R. (2014). Assessment of soil quality indices in agricultural lands of Qazvin Province, Iran. *Ecological Indicators*, *40*(Supplement C), 19–26. <https://doi.org/10.1016/j.ecolind.2013.12.003>.
- Rao, C. R. M., Sahuquillo, A., & Lopez Sanchez, J. F. (2008). A review of the different methods applied in environmental geochemistry for single and sequential extraction of trace elements in soils and related materials. *Water, Air, and Soil Pollution*, *189*(1), 291–333. <https://doi.org/10.1007/s11270-007-9564-0>.
- Reimann, C., & de Caritat, P. (2000). Intrinsic flaws of element enrichment factors (EFs) in environmental geochemistry.

- Environmental Science and Technology*, 34(24), 5084–5091. <https://doi.org/10.1021/es001339o>.
- Resongles, E., Casiot, C., Freyrier, R., Dezileau, L., Viers, J., & Elbaz-Poulichet, F. (2014). Persisting impact of historical mining activity to metal (Pb, Zn, Cd, Tl, Hg) and metalloid (As, Sb) enrichment in sediments of the Gardon River, Southern France. *Science of the Total Environment*, 481(Supplement C), 509–521. <https://doi.org/10.1016/j.scitotenv.2014.02.078>.
- Ripin, S. N. M., Hasan, S., Kamal, M. L., & Hashim, N. M. (2014). Analysis and pollution assessment of heavy metal in soil, Perlis. *Malaysian Journal of Analytical Sciences*, 18(1), 155–161.
- Roberts, T. L. (2014). Cadmium and phosphorous fertilizers: the issues and the science. *Procedia Engineering*, 83, 52–59. <https://doi.org/10.1016/j.proeng.2014.09.012>.
- Rosado, D., Usero, J., & Morillo, J. (2016). Ability of 3 extraction methods (BCR, Tessier and protease K) to estimate bioavailable metals in sediments from Huelva estuary (southwestern Spain). *Marine Pollution Bulletin*, 102(1), 65–71. <https://doi.org/10.1016/j.marpolbul.2015.11.057>.
- Rowe, C. L. (2014). Bioaccumulation and effects of metals and trace elements from aquatic disposal of coal combustion residues: recent advances and recommendations for further study. *Science of The Total Environment*, 485(Supplement C), 490–496. <https://doi.org/10.1016/j.scitotenv.2014.03.119>.
- Rudnick, R. L., & Gao, S. (2003). Composition of the continental crust. *Treatise on Geochemistry*, 3, 659.
- Sager, M., Chon, H.-T., & Marton, L. (2015). Spatial variation of contaminant elements of roadside dust samples from Budapest (Hungary) and Seoul (Republic of Korea), including Pt, Pd and Ir. *Environmental Geochemistry and Health*, 37(1), 181–193. <https://doi.org/10.1007/s10653-014-9639-y>.
- Sahito, O. M., Afridi, H. I., Kazi, T. G., & Baig, J. A. (2015). Evaluation of heavy metal bioavailability in soil amended with poultry manure using single and BCR sequential extractions. *International Journal of Environmental Analytical Chemistry*, 95(11), 1066–1079.
- Sanders, P. F. (2003). Ambient levels of metals in New Jersey soils. New Jersey Department of Environmental Protection, Division of Science, Research & Technology, Environmental Assessment and Risk Analysis Element.
- Sayadi, M. H., Shabani, M., & Ahmadpour, N. (2015). Pollution index and ecological risk of heavy metals in the surface soils of Amir-Abad Area in Birjand City, Iran. *Health Scope*, 4(1 SP ee21137).
- Serbaji, M. M., Azri, C., & Medhioub, K. (2012). Anthropogenic contributions to heavy metal distributions in the surface and sub-surface sediments of the northern coast of Sfax, Tunisia. *International Journal of Environmental Research*, 6(3), 613–626.
- Shen, F., Liao, R., Ali, A., Mahar, A., Guo, D., Li, R., Xining, S., Awasthi, M. K., Wang, Q., & Zhang, Z. (2017). Spatial distribution and risk assessment of heavy metals in soil near a Pb/Zn smelter in Feng County, China. *Ecotoxicology and Environmental Safety*, 139(Supplement C), 254–262. <https://doi.org/10.1016/j.ecoenv.2017.01.044>.
- Shu, Y., & Zhai, S. (2014). Study on soil heavy metals contamination of a lead refinery. *Chinese Journal of Geochemistry*, 33(4), 393–397. <https://doi.org/10.1007/s11631-014-0703-1>.
- Silva, N., Haro, J., & Prego, R. (2009). Metals background and enrichment in the Chiloé Interior Sea sediments (Chile). Is there any segregation between fjords, channels and sounds? *Estuarine, Coastal and Shelf Science*, 82(3), 469–476.
- Simasuwannarong, B., Satapanajaru, T., Khuntong, S., & Pengthamkeerati, P. (2012). Spatial distribution and risk assessment of As, Cd, Cu, Pb, and Zn in topsoil at Rayong Province, Thailand. *Water, Air, and Soil Pollution*, 223(5), 1931–1943. <https://doi.org/10.1007/s11270-011-0995-2>.
- Skordas, K., & Kelepertsis, A. (2005). Soil contamination by toxic metals in the cultivated region of Agia, Thessaly, Greece. Identification of sources of contamination. *Environmental Geology*, 48(4), 615–624. <https://doi.org/10.1007/s00254-005-1319-x>.
- Soliman, N. F., Nasr, S. M., & Okbah, M. A. (2015). Potential ecological risk of heavy metals in sediments from the Mediterranean coast, Egypt. *Journal of Environmental Health Science and Engineering*, 13, 70. <https://doi.org/10.1186/s40201-015-0223-x>.
- Sträter, E., Westbeld, A., & Klemm, O. (2010). Pollution in coastal fog at Alto Patache, Northern Chile. *Environmental Science and Pollution Research*, 17(9), 1563–1573. <https://doi.org/10.1007/s11356-010-0343-x>.
- Streets, D. G., Lu, Z., Levin, L., Ter Schure, A. F. H., Sunderland, E. M. (2017). Historical releases of mercury to air, land, and water from coal combustion. *Science of The Total Environment*, 615(Supplement C), 131–140. doi:<https://doi.org/10.1016/j.scitotenv.2017.09.207>.
- Su, C., Jiang, L., & Zhang, W. (2014). A review on heavy metal contamination in the soil worldwide: Situation, impact and remediation techniques. *Environmental Skeptics and Critics*, 3(2), 24–38. <https://doi.org/10.1016/j.envint.2014.04.014>.
- Sungur, A., Soyлак, M., Yilmaz, E., Yilmaz, S., & Ozcan, H. (2015). Characterization of heavy metal fractions in agricultural soils by sequential extraction procedure: the relationship between soil properties and heavy metal fractions. *Soil and Sediment Contamination: an International Journal*, 24(1), 1–15. <https://doi.org/10.1080/15320383.2014.907238>.
- Sutherland, R. A. (2000). Bed sediment-associated trace metals in an urban stream, Oahu, Hawaii. *Environmental Geology*, 39(6), 611–627. <https://doi.org/10.1007/s002540050473>.
- Teh, T., Nik Norulaini, N. A. R., Shahadat, M., Wong, Y., & Mohd Omar, A. K. (2016). Risk assessment of metal contamination in soil and groundwater in Asia: a review of recent trends as well as existing environmental laws and regulations. *Pedosphere*, 26(4), 431–450. [https://doi.org/10.1016/S1002-0160\(15\)60055-8](https://doi.org/10.1016/S1002-0160(15)60055-8).
- Teng, Y., Wu, J., Lu, S., Wang, Y., Jiao, X., & Song, L. (2014). Soil and soil environmental quality monitoring in China: a review. *Environment International*, 69(Supplement C), 177–199. <https://doi.org/10.1016/j.envint.2014.04.014>.
- Tijhuis, L., Brattli, B., & Sæther, O. M. (2002). A geochemical survey of topsoil in the City of Oslo, Norway. *Environmental Geochemistry and Health*, 24(1), 67–94. <https://doi.org/10.1023/A:1013979700212>.
- Tóth, G., Hermann, T., Da Silva, M. R., Montanarella, L. (2016). Heavy metals in agricultural soils of the European Union with implications for food safety. *Environment International*, 88(Supplement C), 299–309. doi:<https://doi.org/10.1016/j.envint.2015.12.017>.

- Türkdoğan, M. K., Kilicel, F., Kara, K., Tuncer, I., & Uygan, I. (2003). Heavy metals in soil, vegetables and fruits in the endemic upper gastrointestinal cancer region of Turkey. *Environmental Toxicology and Pharmacology*, *13*(3), 175–179. [https://doi.org/10.1016/S1382-6689\(02\)00156-4](https://doi.org/10.1016/S1382-6689(02)00156-4).
- UN/ECE (1998) UN/ECE, 07/05/2007. Protocol to the 1979 convention on long-range transboundary air pollution on heavy metals. Geneva: UN/ECE.
- Varol, M. (2011). Assessment of heavy metal contamination in sediments of the Tigris River (Turkey) using pollution indices and multivariate statistical techniques. *Journal of Hazardous Materials*, *195*, 355–364. <https://doi.org/10.1016/j.jhazmat.2011.08.051>.
- Varrica, D., Tamburo, E., Milia, N., Vallascas, E., Cortimiglia, V., De Giudici, G., Dongarrà, G., Sanna, E., Monna, F., Losno, R. (2014). Metals and metalloids in hair samples of children living near the abandoned mine sites of Sulcis-Inglesiente (Sardinia, Italy). *Environmental Research*, *134*(Supplement C), 366–374. doi:<https://doi.org/10.1016/j.envres.2014.08.013>.
- Violintzis, C., Arditoglou, A., & Voutsas, D. (2009). Elemental composition of suspended particulate matter and sediments in the coastal environment of Thermaikos Bay, Greece: delineating the impact of inland waters and wastewaters. *Journal of Hazardous Materials*, *166*(2–3), 1250–1260. <https://doi.org/10.1016/j.jhazmat.2008.12.046>.
- Wan, X., Dong, H., Feng, L., Lin, Z., & Luo, Q. (2017). Comparison of three sequential extraction procedures for arsenic fractionation in highly polluted sites. *Chemosphere*, *178*(Supplement C), 402–410. <https://doi.org/10.1016/j.chemosphere.2017.03.078>.
- Wang, X. S., & Qin, Y. (2007). Some characteristics of the distribution of heavy metals in urban topsoil of Xuzhou, China. *Environmental Geochemistry and Health*, *29*(1), 11–19. <https://doi.org/10.1007/s10653-006-9052-2>.
- Wang, Y., Sikora, S., Kim, H., Dubey, B., & Townsend, T. (2012). Mobilization of iron and arsenic from soil by construction and demolition debris landfill leachate. *Waste Management*, *32*(5), 925–932. <https://doi.org/10.1016/j.wasman.2011.11.016>.
- Wang, L., Wang, Y., Zhang, W., Xu, C., & An, Z. (2014). Multivariate statistical techniques for evaluating and identifying the environmental significance of heavy metal contamination in sediments of the Yangtze River, China. *Environmental Earth Sciences*, *71*(3), 1183–1193. <https://doi.org/10.1007/s12665-013-2522-9>.
- Wang, M., Faber, J. H., Chen, W., Li, X., & Markert, B. (2015a). Effects of land use intensity on the natural attenuation capacity of urban soils in Beijing, China. *Ecotoxicology and Environmental Safety*, *117*(Supplement C), 89–95. <https://doi.org/10.1016/j.ecoenv.2015.03.018>.
- Wang, Z., Wang, Y., Chen, L., Yan, C., Yan, Y., & Chi, Q. (2015b). Assessment of metal contamination in coastal sediments of the Maluan Bay (China) using geochemical indices and multivariate statistical approaches. *Marine Pollution Bulletin*, *99*(1), 43–53. <https://doi.org/10.1016/j.marpolbul.2015.07.064>.
- Wang, Q., Xie, Z., & Li, F. (2015c). Using ensemble models to identify and apportion heavy metal pollution sources in agricultural soils on a local scale. *Environmental Pollution*, *206*(Supplement C), 227–235. <https://doi.org/10.1016/j.envpol.2015.06.040>.
- Wei, B., & Yang, L. (2010). A review of heavy metal contaminations in urban soils, urban road dusts and agricultural soils from China. *Microchemical Journal*, *94*(2), 99–107. <https://doi.org/10.1016/j.microc.2009.09.014>.
- Werkenthin, M., Kluge, B., & Wessolek, G. (2014). Metals in European roadside soils and soil solution—a review. *Environmental Pollution*, *189*(Supplement C), 98–110. <https://doi.org/10.1016/j.envpol.2014.02.025>.
- WHO/FAO/IAEA. (1996). Trace elements in human nutrition and health. World Health Organization. Switzerland: Geneva.
- Wong, C. S. C., Li, X., & Thornton, I. (2006). Urban environmental geochemistry of trace metals. *Environmental Pollution*, *142*(1), 1–16. <https://doi.org/10.1016/j.envpol.2005.09.004>.
- Wu, Q., Leung, J. Y. S., Geng, X., Chen, S., Huang, X., Li, H., Huang, Z., Zhu, L., Chen, J., & Lu, Y. (2015a). Heavy metal contamination of soil and water in the vicinity of an abandoned e-waste recycling site: implications for dissemination of heavy metals. *Science of the Total Environment*, *506*(Supplement C), 217–225. <https://doi.org/10.1016/j.scitotenv.2014.10.121>.
- Wu, S., Peng, S., Zhang, X., Wu, D., Luo, W., Zhang, T., Zhou, S., Yang, G., Wan, H., & Wu, L. (2015b). Levels and health risk assessments of heavy metals in urban soils in Dongguan, China. *Journal of Geochemical Exploration*, *148*, 71–78. <https://doi.org/10.1016/j.gexplo.2014.08.009>.
- Wuana, R. A., Okieimen, F. E. (2011). Heavy metals in contaminated soils: a review of sources, chemistry, risks and best available strategies for remediation. *Ism Ecology* 2011.
- Xia, X., Yang, Z., Li, G., Yu, T., Hou, Q., & Mutelo, A. M. (2017). Practicability of monitoring soil Cd, Hg, and Pb pollution based on a geochemical survey in China. *Chemosphere*, *172*(Supplement C), 217–224. <https://doi.org/10.1016/j.chemosphere.2016.12.082>.
- Xiao, R., Wang, S., Li, R., Wang, J. J., & Zhang, Z. (2017). Soil heavy metal contamination and health risks associated with artisanal gold mining in Tongguan, Shaanxi, China. *Ecotoxicology and Environmental Safety*, *141*(Supplement C), 17–24. <https://doi.org/10.1016/j.ecoenv.2017.03.002>.
- Xie, Z. M., & Lu, S. G. (2000). Trace elements and environmental quality. In Q. L. Wu (Ed.), *Micronutrients and biohealth* (pp. 208–216). Guiyan, China: Guizhou: Sci. Technol. Press.
- Xu, Z. Q., Ni, S. J., Tuo, X. G., & Zhang, C. J. (2008). Calculation of heavy metals toxicity coefficient in the evaluation of potential ecological risk index. *Environmental Science Technology*, *31*(2), 112–115.
- Yang, J. Y., Yang, X. E., He, Z. L., Chen, G. C., Shentu, J. L., & Li, T. Q. (2004). Adsorption–desorption characteristics of lead in variable charge soils. *Journal of Environmental Science and Health, Part A*, *39*(8), 1949–1967.
- Yang, Y., Campbell, C. D., Clark, L., Cameron, C. M., & Paterson, E. (2006). Microbial indicators of heavy metal contamination in urban and rural soils. *Chemosphere*, *63*(11), 1942–1952. <https://doi.org/10.1016/j.chemosphere.2005.10.009>.
- Yaroshevsky, A. A. (2006). Abundances of chemical elements in the Earth's crust. *Geochemistry International*, *44*(1), 48–55. <https://doi.org/10.1134/S001670290601006X>.
- Ye, F., Huang, X., Zhang, D., Tian, L., & Zeng, Y. (2012). Distribution of heavy metals in sediments of the Pearl River Estuary, Southern China: Implications for sources and

- historical changes. *Journal of Environmental Sciences*, 24(4), 579–588. [https://doi.org/10.1016/S1001-0742\(11\)60783-3](https://doi.org/10.1016/S1001-0742(11)60783-3).
- Yu, X., Yan, Y., & Wang, W. X. (2010). The distribution and speciation of trace metals in surface sediments from the Pearl River Estuary and the Daya Bay, Southern China. *Marine Pollution Bulletin*, 60(8), 1364–1371. <https://doi.org/10.1016/j.marpolbul.2010.05.012>.
- Zahida, K., Bilal, A. Q., Majid, M., & Salman, Q. (2014). Heavy metal content in urban soils as an indicator of anthropogenic and natural influences on landscape of Karachi-A multivariate spatio-temporal analysis. *Ecological Indicators*, 42, 20–31.
- Zahra, A., Hashmi, M. Z., Malik, R. N., & Ahmed, Z. (2014). Enrichment and geo-accumulation of heavy metals and risk assessment of sediments of the Kurang Nallah—Feeding tributary of the Rawal Lake Reservoir, Pakistan. *Science of the Total Environment*, 470(Supplement C), 925–933. <https://doi.org/10.1016/j.scitotenv.2013.10.017>.
- Zhang, X. Y., Lin, F. F., Wong, M. T. F., Feng, X. L., & Wang, K. (2008). Identification of soil heavy metal sources from anthropogenic activities and pollution assessment of Fuyang County, China. *Environmental Monitoring and Assessment*, 154(1), 439. <https://doi.org/10.1007/s10661-008-0410-7>.
- Zhang, Z., Juying, L., Mamat, Z., & Qing Fu, Y. (2016). Sources identification and pollution evaluation of heavy metals in the surface sediments of Bortala River, Northwest China. *Ecotoxicology and Environmental Safety*, 126, 94–101. <https://doi.org/10.1016/j.ecoenv.2015.12.025>.
- Zhang, G., Bai, J., Xiao, R., Zhao, Q., Jia, J., Cui, B., & Liu, X. (2017). Heavy metal fractions and ecological risk assessment in sediments from urban, rural and reclamation-affected rivers of the Pearl River Estuary, China. *Chemosphere*, 184(Supplement C), 278–288. <https://doi.org/10.1016/j.chemosphere.2017.05.155>.
- Zhao, S., Feng, C., Wang, D., Liu, Y., & Shen, Z. (2013). Salinity increases the mobility of Cd, Cu, Mn, and Pb in the sediments of Yangtze Estuary: relative role of sediments' properties and metal speciation. *Chemosphere*, 91(7), 977–984. <https://doi.org/10.1016/j.chemosphere.2013.02.001>.
- Zhao, L., Xu, Y., Hou, H., Shangguan, Y., & Li, F. (2014). Source identification and health risk assessment of metals in urban soils around the Tanggu chemical industrial district, Tianjin, China. *Science of the Total Environment*, 468(Supplement C), 654–662. <https://doi.org/10.1016/j.scitotenv.2013.08.094>.
- Zhu, H., Yuan, X., Zeng, G., Jiang, M., Liang, J., Zhang, C., Yin, J., Huang, H., Liu, Z., & Jiang, H. (2012). Ecological risk assessment of heavy metals in sediments of Xiawan Port based on modified potential ecological risk index. *Transactions of Nonferrous Metals Society of China*, 22(6), 1470–1477. [https://doi.org/10.1016/S1003-6326\(11\)61343-5](https://doi.org/10.1016/S1003-6326(11)61343-5).