

A tool to support resource allocation at small-to-medium seasonal airports



Bojana Mirković^{a,*}, Andrija Vidosavljević^b, Vojin Tošić^a

^a University of Belgrade – Faculty of Transport and Traffic Engineering, Division of Airports and Air Traffic Safety, Vojvode Stepe 305, Belgrade, Serbia

^b ENAC – Ecole Nationale de l'Aviation Civile, Laboratoire de Mathématiques Appliquées, Informatique et Automatique pour l'Aérien (MAIAA), 7 Avenue Edouard-Belin CS 54005, 31055 Toulouse Cedex 4, France

ARTICLE INFO

Article history:

Received 19 January 2015

Received in revised form

5 November 2015

Accepted 12 January 2016

Available online xxx

Keywords:

Seasonal airports
Resource allocation
Decision support
Interactive tool

ABSTRACT

During a few months of the year seasonal airports face the challenging task of maintaining service quality while dealing with heavy traffic, often being pushed to operate on the limit of their available capacity. Under such circumstances, efficient allocation and timely reallocation of physical and human resources is what keeps the service quality of airports at an acceptable level.

The paper describes a tool to support allocation of the physical resources, developed for particular seasonal airport falling in the range 1–5 million annual passengers. The tool is designed to work with the traffic schedule – to check it against existing constraints imposed by area, and to assign the appropriate alert if any of the constraints are violated. Thus, the tool provides airport planners with a clear overview of the traffic situation. Its main function is to allow airport planners to check the effects of different actions to resolve particular constraints violations on the overall situation, before making the final decision. Due to non-disclosure agreement, the tool and its features are presented in the paper on somewhat modified example.

© 2016 Elsevier Ltd. All rights reserved.

1. Introduction

Demand at an airport is rarely distributed evenly throughout the year, month and/or day. It is typically characterized by (more or less pronounced) hourly, daily and/or monthly variations. (Ashford et al., 1997). Monthly variations are typically used to determine the extent to which an airport experiences seasonal concentrations. Seasonality arises from an increase in demand, usually connected to vacation seasons (summer or winter). It may also be imposed by events related to important holidays that may differ depending on the country, region, religion, etc. (Halpern, 2011).

Eurocontrol (2007) identified 39 European seasonal airports using the traffic from 2006 as a reference. Excepting “regular” seasonal airports where seasonality is driven by the tourist season (summer or winter) among these 39, there are six airports that experienced seasonality due to special events in 2006.

Fig. 1 shows seasonal character of seven AENA airports.¹ The distribution of annual departures by month for year 2011 is given in the chart (source: AENA Estadísticas, 2011). There is a clear difference between high season (usually from 4th/5th to 9th/10th month of the year) and off-season traffic. Depending on the airport, the difference can be smaller (Alicante and Malaga) or bigger (Palma de Mallorca, Murcia and Reus), or even very extreme in high season, resulting in sharp peaks (Ibiza and Menorca).

During the high season, an airport is exposed to very high traffic demand, often being pushed to operate on the edge of its available capacity. During these few months of the year it is a challenging task for airports to maintain service quality (acceptable levels of efficiency, punctuality and delays). On the other hand, the available capacity is relatively (sometimes highly) underutilized outside the peak season, resulting in low productivity. Therefore, the successful management of a seasonal airport relies mostly on the efficient allocation of human and physical resources, both during the high

* Corresponding author.

E-mail addresses: b.mirkovic@sf.bg.ac.rs (B. Mirković), andrija.vidosavljevic@recherche.enac.fr (A. Vidosavljević), v.tosic@sf.bg.ac.rs (V. Tošić).

¹ Airports fall into different size categories: Palma de Mallorca and Malaga – 10 to 25 million passengers; Alicante and Ibiza – 5 to 10 million passengers; Menorca, Murcia and Reus – 1 to 5 million passengers.

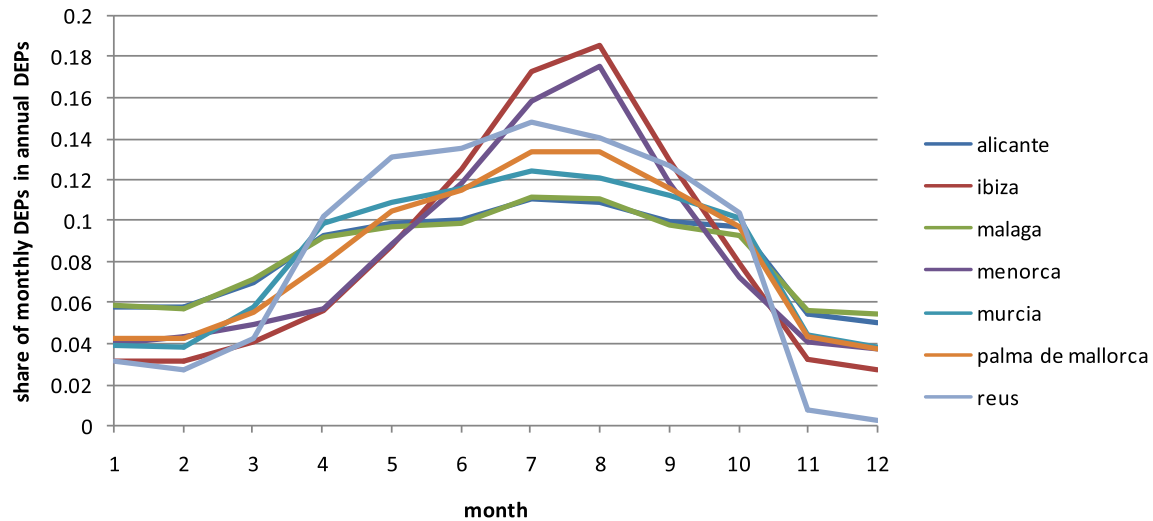


Fig. 1. Monthly distribution of annual departures in 2011 (compiled from: AENA Estadísticas).

season and off-season.

Slot allocation is one of the popular means to cope with airport congestion. It mainly refers to allocation of scarce capacity on the runway. But, in general, it can also be driven by congestion at other airside elements, such as area. E.g. Katsaros and Psaraki (2012) address slot allocation at capacity-constrained airports with seasonal demand, on Greek airports example. They primarily focus on runway capacity congestion, as is the usual case. In this paper we offer a tool for physical (fixed) resource allocation, focusing on the cases at which the main bottleneck is at the terminal building and apron/gate area.

There are various industry tools available on the market² developed for similar purpose, primarily to optimize gate assignment, but also for allocation of other fixed resources (check-in, baggage claim belts, etc.). However, these tools are usually not affordable for small-to-medium airports. An appropriate trade-off has to be achieved between airport needs and their readiness to invest in decision support tools. The tool presented in the paper (also in Mirkovic et al., 2013) offers affordable alternative product which is less sophisticated, but still can satisfactorily fulfil the requirements.

The tool is created to check traffic characteristics against different constraints that may appear at the terminal complex. It is meant to be used, firstly, in preparation for the season, once the expected traffic schedule in the winter/summer season is known. Airport planners can use the tool to perform preliminary resource allocation based on the given requirements and constraints. In the second run, the tool can be used on a weekly and daily basis to reallocate resources in order to respond on to traffic changes.

The same tool can also be useful for airports with a more regular distribution of demand throughout the year, in situations when they experience significant increases in traffic volume due to certain events (sports competitions, congresses etc.). Airports are faced with similar challenges when the terminal complex is under reconstruction and the usual traffic has to be handled with less-capacity available.

Section 2 summarizes major constraints related to the terminal complex. Section 3 gives a description of the tool, and is organized in four sub-sections: the first one presents the case study airport; the second discusses the input data required by the tool; the third

explains the graphical representation of the traffic data; and the fourth focuses on the alerts that the tool triggers when some of the constraints are violated. In Section 4 it is explained how to work with the tool and concluding remarks are given in Section 5.

2. Terminal complex constraints

Depending on the airport's infrastructure and characteristics of demand, there are various factors that can limit capacity of an airport. These may differ significantly from airport to airport. This paper focuses on the constraints that appear at the terminal complex. Airports with primarily passenger traffic are observed.³

Terminal buildings can serve different categories of traffic. It is common to differentiate between domestic and international terminals, or between units within the same terminal. Depending on the region, other specific terminal building modulation can apply, e.g. Schengen, non-Schengen, domestic, or inter-island (as is the case with airports of the e.g. Canary Islands), etc. Also, different terminal units or different levels of the same unit can be assigned to arrival and departure passenger flows. Terminals, terminal levels or terminal units allocated for different categories of traffic/traffic flows (domestic, international, arrival, departure, etc.) are hereinafter referred to as modules.

Capacity constraint in a terminal building, or any of the modules, can be imposed by any processing unit, in arrival or departure flow of passengers or bags, e.g. immigration (passport control), security areas, or baggage sorting areas, etc. Capacity constraints can be either global, imposed by centralized process (e.g. security control in departure flow), or local if they apply for particular module(s) (e.g. baggage claim in domestic terminal module). Depending on the structure of passengers flying to/from the airport (domestic, international, originating, terminating or transfer) and their distribution in time, the same terminal building can process different number of passengers per unit of time (and aircraft carrying the to/from the airport), because the capacity constraint moves from one module to another, or from one processing unit to another. For example, while the airport is struggling with congestion in its international modules, due to passport control capacity constraints, the domestic module might be operating below its capacity.

² Offered by: Amadeus, Ascent Technology, Beontra, Seetek, Siemens, Sita, etc.

³ Out of 528 airports in Europe 370 have only one dominant market segment, out of which 85% are passenger airports (Eurocontrol, 2007).

Allocation constraints at apron/gate area refer to compatibility between aircraft type and aircraft stand size. Aircraft is allowed to occupy only the stands designed for the same or any bigger⁴ aircraft type. For contact stands (gates) the same constraints apply as for the terminal building/module they are connected to (e.g. only international flights can be allocated at gates connected to international terminal). Terminals with vertical separation between traffic categories (e.g. one level for domestic, one level for international) allow more flexible usage of gates. Also, other apron areas may exist at the airport, e.g. maintenance apron, pilot school apron, or apron for any other special purpose. Although they are not available for passenger aircraft in regular conditions, these stands can be used for traffic overflow when necessary.

Given demand structure with respect to aircraft types and users, apron capacity depends on stand occupancy times. Stand occupancy time accounts for turnaround time and buffer (separation) time. Different aircraft, with respect to aircraft type and airline, require different turnaround times. During high season turnaround times can be constrained aiming to achieve higher apron capacity. In order to enable efficient aircraft flow across the apron it is necessary to provide buffer times between two consecutive occupancies of the same aircraft stand or apron area. Furthermore, it also assures that two aircraft are not assigned to the same aircraft stand simultaneously. Buffer time depends on apron taxiway/taxilane system (single bi-directional taxilane, parallel taxilanes, etc.).

Constraints at terminal complex can be classified as: allocation constraints related to aircraft stands and terminal modules, capacity constraints in terminal(s) and modules, and time constraints related to turnaround time and buffer time. For successful allocation of the resources they have to be observed all together. There is not sharp boundary between these classes. So, turnaround time is at the same time capacity constraint for apron area, while buffer time is also allocation constraint as it prevents assignment of two aircraft on the same aircraft stand at the same time.

3. Description of the tool

The tool for resource allocation⁵ is designed to work with the traffic schedule and to check it against specific physical and operational constraints imposed by the terminal building and apron area at given airport. If any constraint is violated the tool sends an alert (in visual and descriptive form) to the airport planner, thus providing a clear overview of the conflicting situations that should be resolved.

The tool itself does not offer a solution to alert situations. It is up to airport planners to suggest one or more solutions, based primarily on their experience. At airports of small-to-medium size experienced airport planners, who are familiar with airport structure and operational limitations, as well as general traffic requirements, can easily “see” solutions to various conflict situations. However, due to the many constraining factors and their interactions, they can hardly realize the effects of their “local” actions on a global traffic situation. The main function of the tool is to improve airport planners’ situational awareness at any time, and to allow them to check the effects of different options to resolve conflicting situations, before making the final decision.

The tool is developed for Prince Mohammad Bin Abdulaziz International Airport, Madinah, Saudi Arabia. The goal was to provide support to cope with the traffic increase⁶ with existing resources at terminal/apron complex until new terminal/apron complex

(located on the opposite side of the runway system) is built. Due to non-disclosure agreement this particular example could not be used to explain all the features of the tool and to demonstrate how it works. The tool can be, however, adapted to other airports given their physical and operational constraints at terminal complex. An academic example (MVT⁷ airport) is used in this paper, instead. It is described in the following section.⁸

3.1. Physical and operational constraints at airport's terminal complex: case study airport

MVT airport is hypothetical seasonal airport, assumed to be located inside the Schengen zone.

MVT's terminal building consists of six modules:

- M1 – for domestic flights – arrivals,
- M2 – for Schengen flights – both arrivals and departures and, when necessary, non-Schengen departures,
- M3 – for non-Schengen flights – arrivals,
- M4 – for non-Schengen flights – arrivals and departures,
- M5 – non-Schengen flights – arrivals, and,
- M6 – for domestic flights – departures.

The majority of passengers that fly to/from the airport during high season are foreign non-Schengen tourists. Thus, the main bottleneck at the terminal building is at passport control in the arrival passenger flow.

All the constraints are defined in aircraft seats i.e. assuming a 100% load factor, which is the worst-case scenario. At the first level of planning (seasonal level) the airport planner has to decide whether all aircraft intending to fly to/from the airport can be accepted or not. For that purpose, it is reasonable to work with seats, because load factors are not yet known. Later, when the tool is used for reallocation of resources on a daily basis, the number of seats can be (and it is desirable to do so) replaced with the number of passengers (obtained from booking data) in order to get more realistic results, instead of over-constraining already insufficient resources.

Terminal modules M1, M2 and M6 do not have passport control, and therefore have none of the constraints imposed by it. The available number of passport control desks at modules M3 and M5 allow a processing rate of 800 seats/h (each). Module M4 should be used only when it is necessary to accept traffic overflow. It allows the processing of only 300 seats/h.

Regardless of the category of arrival (domestic, Schengen, non-Schengen) there is a capacity constraint for the arrival flow imposed by baggage sorting and delivery system:

- 1600 arriving international+domestic seats in any 30 min period, and
- 3000 arriving international+domestic seats in any 60 min period.

There is a centralized security system for all the terminal modules. Due to this, there is a capacity constraint for the departure flow at the airport, in terms of number of total departing seats that may be processed in a 30 min and 60 min period:

- 1800 departing international+domestic seats in any 30 min period, and

⁴ Larger wingspan.

⁵ Developed in RAD Studio and compiled to run on the Windows platform.

⁶ 3.2 million passengers in 2010; 4.6 million in 2013; 5.7 million in 2014; new terminal opened in July 2015.

⁷ MVT does not refer to Mataiva Airport in French Polinesa (MVT/NTGV), but it is a hypothetical airport.

⁸ One day traffic from Tenerife Sur airport is used as the traffic sample, 14.2.2013.

Table 1
Apron structure of MVT airport.

Aircraft stand	Design aircraft	Max wingspan	Description
1	ATR72	27.5	Terminal
2,3,4	B737-800	36	Terminal
5	B747-400	65	Terminal
6	A300	45	Terminal
7	MD11	52	Terminal
8,9	B767-300	48	Terminal
10,11,12,13	A320	34.5	Remote
14,15,16	B767-300	48	Remote
17	B747-400	65	Remote
18,19	MD11	52	Maintenance
20	B737-800	36	Maintenance

- 3500 departing international+domestic seats in any 60 min period.

The apron area consists of twenty aircraft stands, out of which nine stands (stands 1 through 9) are terminal stands (without air-bridges), and eleven stands (stands 10 through 20) are remote. Three remote stands are located by the maintenance hangar and are not available for regular turnaround, except under special circumstances.

In Table 1, the design aircraft and maximum wingspan are associated to each aircraft stand, describing the apron structure at MVT airport.

As its apron is exposed to heavy loads during high season, the airport constrains turnaround times depending on the destination and type of aircraft, as follows:

- Domestic flight – 45 min for narrow-body⁹ and 60 min for wide-body¹⁰ aircraft, and
- Schengen and non-Schengen flight – 60 min for narrow-body, and 75 min for wide-body aircraft.

Required buffer time between two occupancies of the same stand is 10 min.

Given terminal complex characteristics (physical and operational) are built in the tool during the development phase: attributes holding the size and allocation rules (size and category of aircraft stand, category of terminals), capacity constraints (general, or by module) and time constrains (turnaround time, or buffer time).

Using the MVT airport as an example, the tool for resource allocation is explained in the remainder of the section, as follows:

- Input data – basic and additional; the way they are imported/inserted or derived;
- Graphical representation of the traffic situation – terminal and apron views, and
- Alerts for constraints violation – the way they are triggered; the form in which they are displayed on the screen.

3.2. Input data – traffic schedules

Input data are imported directly from the traffic schedule (prepared in a pre-defined form), and/or inserted/changed manually.

There are fifteen “parameters” that describe an aircraft/flight in the tool. Nine of them are basic data, necessary for the tool to run. The other six are descriptive data, providing additional information to the airport planner (e.g. air-carrier and origin/destination) or being derived from basic data (e.g. on-block time and take-off time).

The input data are (basic data are emphasized in bold): “**registration**” number, air-carrier, **type of aircraft**, **aircraft stand**, **date**, flight number, origin, **landing time**, on-block time (landing time + taxi-in time), destination, **off-block time**, take-off time (off-block time + taxi-out time), **category of flight**, **terminal module**, **number of seats** (when available – number of arriving and departing passengers).

Some data, the registration number, air-carrier, type of aircraft and aircraft stand, are linked to an aircraft, while the other data refer to the arrival and/or departure segments of that aircraft. Flight numbers, landing/take-off times and the origin/destination clearly take different values for arrival and departure. However, the category of flight, terminal module and number of passengers (when replacing the number of seats) could also take different values before and after turnaround.

The “registration” number is a key field for connecting the arrival and departure segments of the same aircraft, and for linking flight data (listed in the table) to its graphical representation in the charts. This field may be filled out with the real registration number of the aircraft (usually not known for pre-seasonal planning), or any other letter/number combination (e.g. AB123). If omitted, it is automatically filled out with a unique ID assigned by the tool.

To simplify and validate data insertion, lookup lists are defined for the parameters that may take values from a (more or less) limited set of data at one airport: air-carrier, type of aircraft, origin/destination, flight category, terminal module and aircraft stand. Some of these fields are restricted and may accept only “values” from the list. In the case of MVT airport there are: six terminal modules (M1 to M6), 20 aircraft stands (1–20, as given in Table 1) and three categories of flights (SI – Schengen, NSI – Non-Schengen and D – Domestic). All other lookup lists (for air-carrier, aircraft type and origin/destination) are connected to tables in the database. They are not locked, and are easy to update/upgrade. The current database contains about 850 air-carriers, 55 aircraft types and 2800 airports (source: [Airport Codes, 2013](#)).

The date and number of seats are pre-defined data. The tool assigns default values if omitted to be filled, e.g. when adding a new flight, the tool automatically assigns the currently active date to it if no other date is specified. It is desirable to enter the exact number of seats for each aircraft (or, once it becomes available, the number of passengers on board). Otherwise, default values are automatically assigned: 300 seats for wide-body and 180 seats for narrow-body aircraft. Wide-bodies are D, E and F ICAO categories of aircraft (wingspan 36 m and more).

The arrival time is the time on the runway (landing time), while the time on the stand i.e. on-block time is calculated by adding taxi-in time. On the other hand, the departure time is the push-back time i.e. off-block time, while the take-off time is calculated by adding taxi-out time. Taxi-in and taxi-out times depend on the airport layout and may differ for different runways in use and aircraft stand locations. In the case study, an average taxiing time of 5 min is used for calculation, both for taxi-in and taxi-out, from any stand to both runways in use.

A screenshot of the traffic data tables is given in Fig. 2. Five selected flights from the traffic sample¹¹ are given in Table 2, with

⁹ Narrow-body aircraft are considered aircraft with wingspan up to, but not including 36 m.

¹⁰ Wide-body aircraft are considered aircraft with wingspan equal to or greater than 36 m.

¹¹ for the demonstration purposes we used traffic schedule on 14.02.2013 at Tenerife Sur Airport, somewhat adapted for case study airport (and saved as 15.02.2013).

Resource Allocation Support Tool - Tables

REG	CARRIER	TYPE	STAND	ALERT DESCRIPTION	ORIGIN	IN_CAT	LND_T	IN_SEATS	IN_TERMINAL	DESTINATION	OUT_CAT	OFF_BT	OUT_SEATS	OUT_TERMINAL
IBS3910	IBERIA EXPRESS	Airbus A320-200	13		MAD	D	13:50	180 1		MAD	D	14:40	180 6	
TCX6022	THOMAS COOK AIRLINES LIMITED	Airbus A321-200	2		NCL	NSI	13:50	220 5		NCL	NSI	14:50	220 4	
▲ TOM6286	THOMSON AIRWAYS LIMITED	Boeing 737-800	3	TAT by 5	CWL	NSI	13:55	189 3		CWL	NSI	15:05	189 4	
▲ TCX2314	THOMAS COOK AIRLINES LIMITED	Airbus A330-200	5	3-Inward by 49	MAN	NSI	14:00	323 3		MAN	NSI	15:00	323 2	
▲ TOM4226	THOMSON AIRWAYS LIMITED	Boeing 737-800	9	5-Inward by 73 * TAT by 10	LGW	NSI	14:00	189 5		LGW	NSI	15:15	189 4	
▲ TCX1012	THOMAS COOK AIRLINES LIMITED	Airbus A321-200	17	Buffer-Overlap	LGW	NSI	14:10	220 4		LGW	NSI	15:10	220 4	
▲ TCX3214	THOMAS COOK AIRLINES LIMITED	Airbus A321-200	4	3-Inward by 80	GLA	NSI	14:20	220 3		GLA	NSI	15:20	220 4	
▲ TCX8126	THOMAS COOK AIRLINES LIMITED	Airbus A321-200	10	4-Inward by 140	BFS	NSI	14:20	220 4		BFS	NSI	15:20	220 4	
▶ EXS517	JET2.COM LIMITED	Boeing 737-800	11	3-Inward by 269 * AC Stand * Buffer-Overlap	NCL	NSI	14:20	189 3		NCL	NSI	15:20	189 2	
▲ NAX2412	NORWEGIAN AIR SHUTTLE A.S.	Airbus A320-200	6	Outward-30 by 165	TRF	SI	14:30	180 2		TRF	SI	15:20	180 2	
▲ AEA7146	AIR EUROPA	Boeing 737-800	14	TAT by 10	SCQ	D	14:30	180 1		SCQ	D	15:30	180 6	
▲ TCX5234	THOMAS COOK AIRLINES LIMITED	Airbus A320-200	13	4-Inward by 320 * Buffer by 5	EMA	NSI	14:40	180 4		EMA	NSI	15:30	180 4	
▲ TCX7266	THOMAS COOK AIRLINES LIMITED	Airbus A321-200	15	3-Inward by 341	BRS	NSI	14:40	220 3		BRS	NSI	15:40	220 4	
IWD8115	ORBEST	Airbus A330-300	5		BIO	D	15:05	386 1		BIO	D	15:45	386 6	
RYR6691	RYANAIR	Boeing 737-800	4		BRE	SI	15:25	189 2		BRE	SI	16:00	189 2	
▲ TOM1288	THOMSON AIRWAYS LIMITED	Boeing 767-300	6	AC Stand	GLA	NSI	15:25	283 5		GLA	NSI	16:25	283 4	
▲ NAX4271	NORWEGIAN AIR SHUTTLE A.S.	Boeing 737-800	10	AC Stand	ARN	SI	15:30	189 2		ARN	SI	16:20	189 2	

REG	CARRIER	TYPE	STAND	ALERT DESCRIPTION	ORIGIN	IN_CAT	LND_T	IN_SEATS	IN_TERMINAL	DESTINATION	OUT_CAT	OFF_BT	OUT_SEATS	OUT_TERMINAL
IBS3910	IBERIA EXPRESS	Airbus A320-200	13		MAD	D	13:50	180 1		MAD	D	14:40	180 6	
TCX6022	THOMAS COOK AIRLINES LIMITED	Airbus A321-200	2		NCL	NSI	13:50	220 5		NCL	NSI	14:50	220 4	
▲ TOM6286	THOMSON AIRWAYS LIMITED	Boeing 737-800	3	TAT by 5	CWL	NSI	13:55	189 3		CWL	NSI	15:05	189 4	
▲ TCX2314	THOMAS COOK AIRLINES LIMITED	Airbus A330-200	5	3-Inward by 49	MAN	NSI	14:00	323 3		MAN	NSI	15:00	323 2	
▲ TOM4226	THOMSON AIRWAYS LIMITED	Boeing 737-800	9	5-Inward by 73 * TAT by 10	LGW	NSI	14:00	189 5		LGW	NSI	15:15	189 4	
▲ TCX1012	THOMAS COOK AIRLINES LIMITED	Airbus A321-200	17	Buffer-Overlap	LGW	NSI	14:10	220 4		LGW	NSI	15:10	220 4	
▲ TCX3214	THOMAS COOK AIRLINES LIMITED	Airbus A321-200	4	3-Inward by 80	GLA	NSI	14:20	220 3		GLA	NSI	15:20	220 4	
▲ TCX8126	THOMAS COOK AIRLINES LIMITED	Airbus A321-200	10	4-Inward by 140	BFS	NSI	14:20	220 4		BFS	NSI	15:20	220 4	
▶ EXS517	JET2.COM LIMITED	Boeing 737-800	11	3-Inward by 269 * AC Stand * Buffer-Overlap	NCL	NSI	14:20	189 3		NCL	NSI	15:20	189 2	
▲ NAX2412	NORWEGIAN AIR SHUTTLE A.S.	Airbus A320-200	6	Outward-30 by 165	TRF	SI	14:30	180 2		TRF	SI	15:20	180 2	
▲ AEA7146	AIR EUROPA	Boeing 737-800	14	TAT by 10	SCQ	D	14:30	180 1		SCQ	D	15:30	180 6	
▲ TCX5234	THOMAS COOK AIRLINES LIMITED	Airbus A320-200	13	4-Inward by 320 * Buffer by 5	EMA	NSI	14:40	180 4		EMA	NSI	15:30	180 4	
▲ TCX7266	THOMAS COOK AIRLINES LIMITED	Airbus A321-200	15	3-Inward by 341	BRS	NSI	14:40	220 3		BRS	NSI	15:40	220 4	
IWD8115	ORBEST	Airbus A330-300	5		BIO	D	15:05	386 1		BIO	D	15:45	386 6	
RYR6691	RYANAIR	Boeing 737-800	4		BRE	SI	15:25	189 2		BRE	SI	16:00	189 2	
▲ TOM1288	THOMSON AIRWAYS LIMITED	Boeing 767-300	6	AC Stand	GLA	NSI	15:25	283 5		GLA	NSI	16:25	283 4	
▲ NAX4271	NORWEGIAN AIR SHUTTLE A.S.	Boeing 737-800	10	AC Stand	ARN	SI	15:30	189 2		ARN	SI	16:20	189 2	

CHANGE CONSTRAINT APPLY CHANGES CANCEL TEMPORARY CHANGES RE-PLAN

Fig. 2. Traffic data tables.

Table 2
Parameters for five selected flights from the traffic sample.

	1	2	3	4	5
	REG	CARRIER	TYPE	STAND	ALERT DECR.
I	EXS517	JET2.COM LIM...	Boeing 737-800	11	(see 3.4 for details)
II	NAX2412	NORWEGIAN AS	Airbus A320-200	6	(see 3.4 for details)
III	AEA7146	AIR EUROPA	Boeing 737-800	14	(see 3.4 for details)
IV	RYR5552	RYANAIR	Boeing 737-800	10	(see 3.4 for details)
V	MON568	MONARCH AIRL.	Airbus A330-200	5	(see 3.4 for details)

	6	7	8	9	10
	ORIGIN	IN_CAT	LND_T	IN_SEATS	IN_TERMINAL
I	NCL	NSI	14:20	189	3
II	TRF	SI	14:30	180	2
III	SCQ	D	14:30	180	1
IV	HHN	SI	17:50	189	5
V	MAN	NSI	17:25	374	4

	11	12	13	14	15
	DESTINATION	OUT_CAT	OFF_BT	OUT_SEATS	OUT_TERMINAL
I	NCL	NSI	15:20	189	2
II	TRF	SI	15:20	180	2
III	SCQ	D	15:30	180	6
IV	HHN	SI	18:20	189	2
V	MAN	NSI	18:25	374	4

all fifteen parameters in their exact order as displayed in traffic data tables (Fig. 2). They will be used in Section 3.4 to illustrate how alerts are triggered i.e. constraints violation check.

Columns 1–4 are related to aircraft data. Column 5 contains a description of the constraint violation, which will be explained later. Columns 6–10 are related to the arrival, and columns 11–15 to the departure of the same aircraft.

There are two traffic data tables, as shown in Fig. 2, that initially contain the same data. Temporary table (white background) is the table airport planners work with, as it allows the changing of data. The main table (gray background) holds the initial state, allowing the airport planner to return to it when he/she needs it. More details are provided in Section 4.

3.3. Graphical representation of the traffic situation: terminal and apron views

Based on input data, the software displays the traffic situation at airport MVT, for a selected date, in the form of Gantt charts. The traffic situation of the current day is displayed by default. Two views/charts are available: terminal and apron.

Terminal view is a Gantt chart with the time line 00–24 (by default) on the horizontal axis and the six terminal modules on the vertical axis, as in Fig. 3. In this view, aircraft are presented with 2 bars (arrival bar and departure bar), because incoming and outgoing passengers of the same aircraft may be assigned to different terminal modules. With this approach, it is also very easy to present the aircraft changing its flight “category” during its turnaround (e.g. arriving from a non-Schengen country, departing to a domestic destination).

The bar length, both for arrivals and for departures, corresponds to aircraft turnaround time, with some exceptions. Aircraft having only a departure (early morning) or arrival segment (late night) are presented by the maximum turnaround time with respect to category of flight and aircraft type (narrow/wide body). Aircraft staying longer than 2.5 h at the airport are presented by an arrival bar and a departure bar, both with maximum turnaround time, with respect to category of flight and aircraft type (narrow/wide body). In this special case, the arrival bar starts at *on-block time* and ends at *on-block + maximum turnaround time*, and the departure bar starts at *off-block – maximum turnaround time* and ends at *off-block time*.

Using turnaround times to illustrate passengers’ presence in the terminal, although very rough, does not have any repercussions on the calculations done to check the traffic against capacity constraints (see detailed explanation in section 3.4). More sophisticated representation would require detailed observations and analysis of passenger arriving and departing flows.

Different categories of flights are given in different colours (see Fig. 3):

- **Green** for Schengen (SI)
- **Blue** for non-Schengen (NSI), and
- **Purple** for Domestic (D).

Regardless of the flight category, the arrival bar is given in a darker, and the departure bar in a lighter shade of the colour. These colours apply when flights do not violate any of the constraints.

Apron view is a Gantt chart with the time line 00–24 (by default) on the horizontal axis and the twenty parking stands on the vertical axis (nine by the terminal without air-bridges, and eleven remote stands), as in Fig. 4. Each aircraft stand is constrained by the wingspan of the design aircraft. Maintenance stands are displayed in a lighter (gray) colour, as they are not available to regular traffic under normal circumstances.

In the Apron view, aircraft are presented by one **gray bar** (in regular, conflicts free conditions). The bar length corresponds to aircraft turnaround time (see Fig. 4). The vertical axis is scrollable, showing 11 stands at the time.

Both the Terminal and Apron view may be customized in relation to the time frame. Instead of the default 24-h view, the planner may select a time period that is currently of interest to be displayed. Also, the planner may zoom in certain situations of interest.

3.4. Alerts for constraints violation

Having the wide range of physical and operational constraints built in the tool, and traffic schedules parameters contained in the traffic schedules, the tool can assign different alerts for constraint violation by comparing corresponding values/attributes as it will be described in the reminder of this section.

Alerts related to passenger arrival/departure flows are visible in the Terminal view, and those related to the apron area are visible in the Apron view. When there is a constraint violation, the entire bar of the questioned aircraft is coloured red/orange/yellow, depending on the alert type. Red is associated with highest priority alerts,

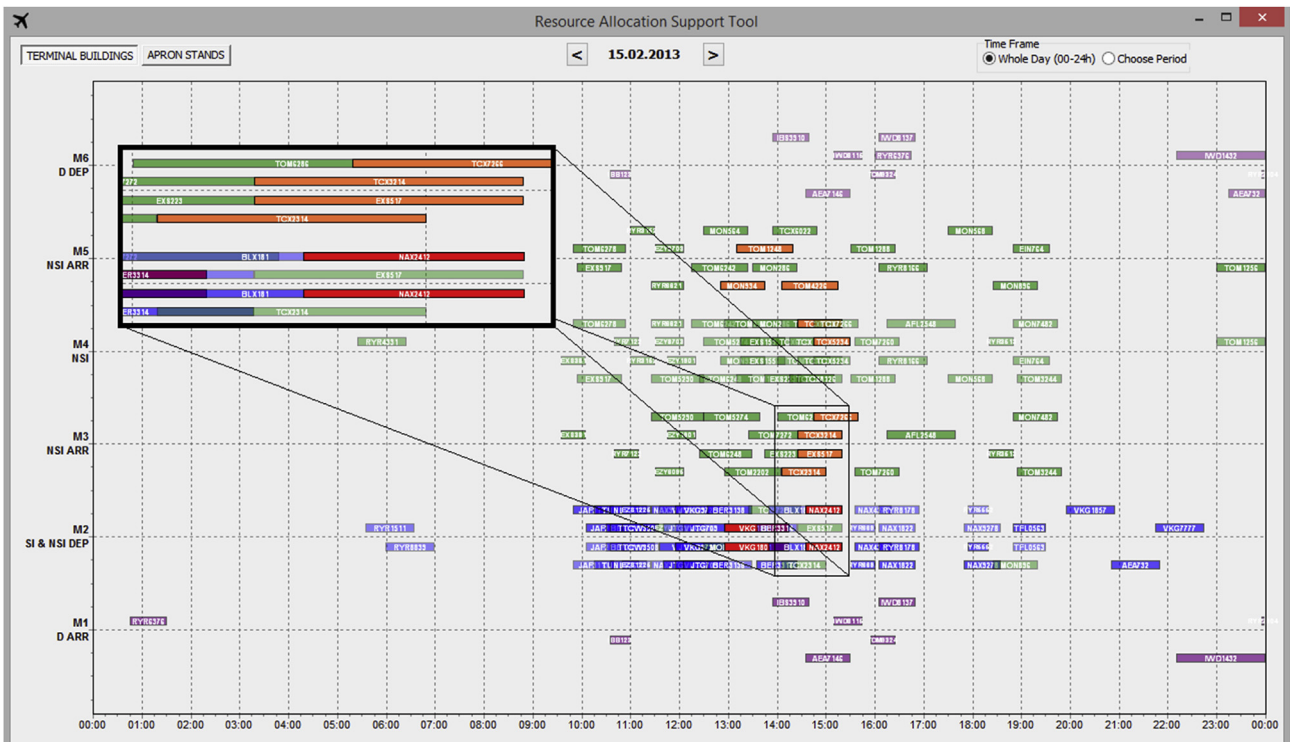


Fig. 3. Traffic situation – terminal view.

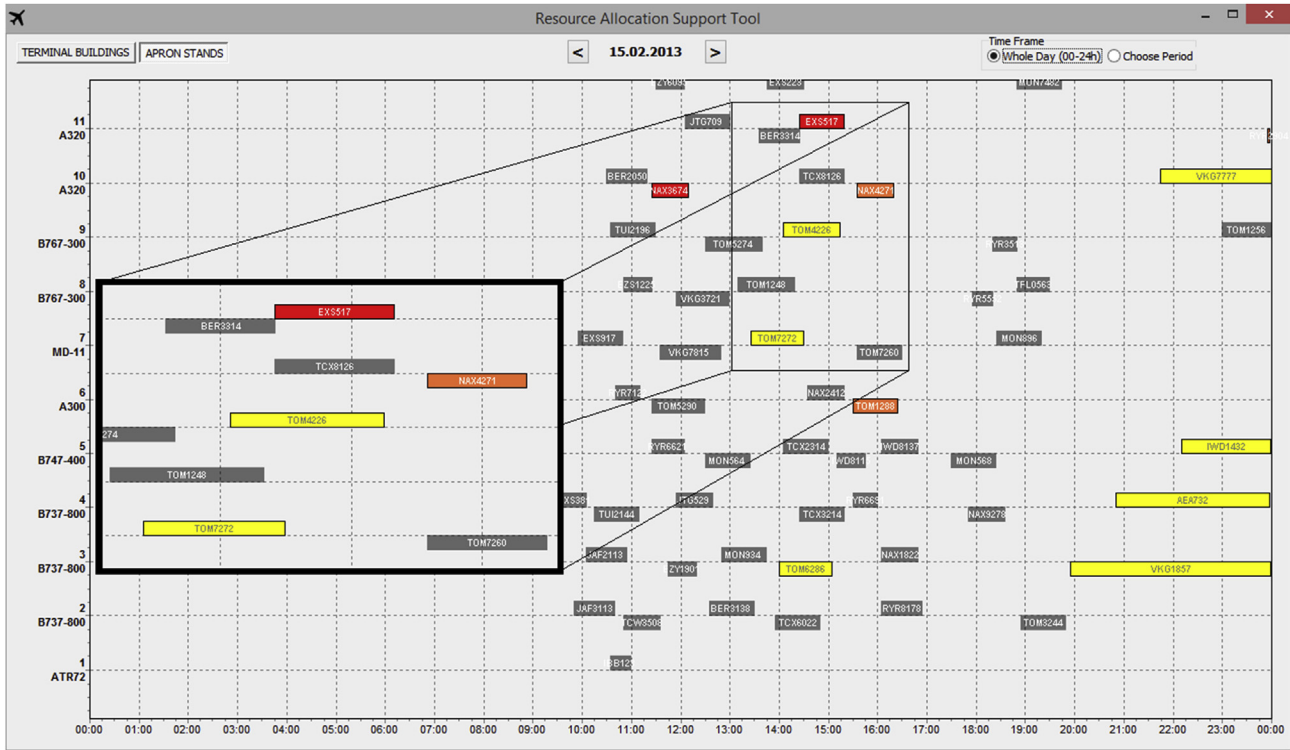


Fig. 4. Traffic situation – apron view.

Table 3
List of alerts, description and appearance.

Simplified notation (code)	Full description	Colour	Displayed in
Inward-30 by XX	Inward total seats in 30 min interval breached by XX number of seats	RED	Terminal view
Inward-60 by XX	Inward total seats in 60 min interval breached by XX number of seats	RED	Terminal view
Outward-30 by XX	Outward total seats in 30 min interval breached by XX number of seats	RED	Terminal view
Outward-60 by XX	Outward total seats in 60 min interval breached by XX number of seats	RED	Terminal view
YY-Inward by XX	YY terminal module capacity breached by XX number of seats	ORANGE	Terminal view
ARR Segment	ARR segment allocated to wrong terminal	ORANGE	Terminal view
DEP Segment	DEP segment allocated to wrong terminal	ORANGE	Terminal view
Large AC	Single aircraft with number of seats greater than module capacity	YELLOW	Terminal view
Buffer by XX/Overlap	Buffer time violation by XX min (or Overlap)	RED	Apron view
AC Stand	Incompatible aircraft stand	ORANGE	Apron view
Maintenance Stand	AC assigned to maintenance stand	ORANGE	Apron view
TAT by XX	Turnaround time breached by XX of minutes	YELLOW	Apron view

orange for medium priority, and yellow for lowest priority alerts. If more than one alert is assigned to the same aircraft, the higher priority alert is visible in the chart.

Table 3 provides relevant data related to alerts: simplified notation used, a description of the alert, colour, and the view in which it is visible. In addition, aircraft with alerts are marked with Δ , for easy detection. The alert mark appears before the registration sign in the data tables (Fig. 2).

There are three groups of constraints that the traffic is checked

against in the tool: allocation constraints, time constraints and capacity constraint.

Allocation constraints refer to:

1. Compatibility between aircraft type and aircraft stand size,
2. Compatibility between traffic category/flow and terminal module,
3. Usage of other than passenger apron areas (if any).

Table 4

Alerts for five elected flights from the traffic sample.

	1	2	3	4	5
	Reg	Carrier	Type	Stand	Alert description
I	EXS517	JET2.COM LIMITED	Boeing 737-800	11	3-Inward by 269 * AC Stand * Buffer-Overlap
II	NAX2412	NORWEGIAN AS	Airbus A320-200	6	Outward-30 by 165
III	AEA7146	AIR EUROPA	Boeing 737-800	14	TAT by 10
IV	RYR5552	RYANAIR	Boeing 737-800	10	AC Stand * ARR segment
V	MON568	MONARCH AIRL.	Airbus A330-200	5	Large AC

On the apron, constraint on aircraft type vs. aircraft stand size is checked using the wingspan of the aircraft and maximum allowed wingspan of the aircraft stand. Wingspan of the aircraft is retrieved from the database,¹² or 65 m¹³ wingspan is automatically assigned to those aircraft types which are not included in the database. For each aircraft stand maximum wingspan is defined as its size characteristics, and build in the tool according to Table 1 (column 3).

For any aircraft i its compatibility with aircraft stand j is checked with the condition (1):

$$WingSpan_i \leq MaxWingSpan_j \quad (1)$$

$WingSpan_i$ - wingspan of aircraft type i (Table 2 – column 3)

$MaxWingSpan_j$ - the size of the aircraft stand j (Table 2 – column 4)

If the wingspan of selected aircraft is larger than the maximum wingspan allowed on the aircraft stand, an alert for **aircraft stand incompatibility** is sent out.

For aircraft I and III (Table 2) it is checked:

$$WingSpan_{B737-800} \leq MaxWingSpan_{11} \text{ i.e. } 35.8 \leq 34.5$$

$$WingSpan_{B737-800} \leq MaxWingSpan_{14} \text{ i.e. } 35.8 \leq 48$$

The condition is not satisfied for aircraft I and the alert **AC stand** would appear in Table 2 – column 5 (see Table 4 for details).

Table 4 summarizes alerts for five selected flights from the traffic sample, and each will be explained in this section.

For other two allocation constraints, there are no numerical values to compare, but their descriptive attributes i.e. allocation rules are compared to corresponding traffic parameters.

If an aircraft is assigned to any of the **maintenance stands** (in this example 18, 19, 20) an alert **Maintenance stand** is given (regardless of aircraft type vs. aircraft stand size compatibility), because, in this case, maintenance stands are not available for regular use. In special occasions when this is allowed for traffic overflow, this alert should be ignored by airport planner.

A check is performed for each flight to determine whether it has been allocated a compatible terminal module, in accordance with terminal module allocation rules. If not, an alert for **terminal module incompatibility** appears.

In this example, there are six different terminal modules (M1–M6). Each module holds two attributes: segment (arrival or departure) and category of flight (domestic, Schengen and non-Schengen). Inbound (Table 2 – column 7) and outbound (Table 2

– column 12) category of flight is compared to allocation rules of the module assigned (Table 2 – column 10 for inbound; and Table 2 – column 15 for outbound).

For example, aircraft I arrives from non-Schengen international destination, and departs to non-Schengen international. Its arrival flow is allocated to M3 (non-Schengen flights – arrivals) and departure to M2 (for Schengen flights – both arrivals and departures and, when necessary, for non-Schengen departures). In both cases they are compatible, no constraint violation.

Aircraft IV, arrives from Schengen international and it is allocated to M5 that is non-Schengen international, which activates **ARR Segment** alert (see Table 4).

For aircraft flying to domestic destination, the tool activates **DEP Segment** alert if it would be allocated to any of arrival terminals: M1, M3 and M5; or to any departure terminal for other than domestic flights: M2 and M4. Only if it assigned to M6 the alert is not activated (which is the case of aircraft III).

Time constraints refer to:

1. Turnaround time constraint, and
2. Buffer time required

The duration of turnaround times is checked against the maximum allowed turnaround time, depending on the flight category and type of aircraft.

Aircraft i of class j (wide-body or narrow-body),¹⁴ flying to destination that is of category k (domestic or international), should satisfy the condition (2):

$$Turnaround_i \leq MaxTurnaround_{jk} \quad (2)$$

$$Turnaround_i = t_i^D - t_i^A - \text{turnaround time of aircraft } i$$

t_i^A - on-block time calculated as: LND_time (Table 2 – column 8) + taxiing time (5 min in this example)

t_i^D - off-block time (Table 2 – column 13)

$MaxTurnaround_{jk}$ - maximum allowed turnaround time for aircraft class j category k (time constraint for given airport e.g. 45 min for narrow-body/domestic, or 60 min for narrow-body/international)

Otherwise, if aircraft intended to stay longer than max allowed turnaround time at the apron, the tool assigns a **turnaround violation alert (TAT by XX)**.

For aircraft III (Table 2) the condition: $15:30 - (14:30 + 00:05) \leq 00:45$ is not satisfied i.e. turnaround time is $55-45 = 10$ min longer than the time constraint for narrow-body/domestic. **TAT by 10** alert is given (see Table 4).

¹² The database contains 55 aircraft types, along with their wingspans, and may be upgraded with new entries if necessary.

¹³ It is the maximum wingspan that may be accepted at the apron.

¹⁴ Wide-body aircraft: $WingSpan \geq 36$ m; narrow-body aircraft $WingSpan < 36$ m.

For aircraft 1 (Table 2) the condition: $15 : 20 - (14 : 20 + 00 : 05) \leq 01 : 00$ is satisfied, and there is no alert recorded for this aircraft (narrow-body/international).

The buffer is planned to absorb expected regular disturbances in the traffic schedule on the day of operation (early arrival, short turnaround delays), accounting for the layout of the apron area, primarily apron taxiways/taxilanes system. In this example, the buffer constraint is considered as violated if the turnaround of the previous aircraft at the same aircraft stand is still in process within the time-frame of 10 min before the arrival time of the aircraft in question.

It means that, for aircraft i , assigned to the same aircraft stand as aircraft j , where the time of arrival at aircraft stand for aircraft i is equal or later than the arrival time for aircraft j ($t_i^A \geq t_j^A$) the condition (3) should be satisfied:

$$t_i^A \geq t_j^D + 10 \tag{3}$$

When the condition is not satisfied, but it is still $t_i^A > t_j^D$, the tool assigns an alert indicating the value of **buffer** violation by $t_j^D + 10 - t_i^A$ minutes (*Buffer by XX*). When it becomes $t_i^A \leq t_j^D$, it indicates that two aircraft **overlap** on the same aircraft stand (*Buffer-Overlap*).

Aircraft 1 (Table 2) is in collision with its predecessor allocated to same aircraft stand (11) – BER3314. Scheduled on-block time of aircraft 1 (14 : 20 + 00 : 05) is equal to scheduled off-block time of BER3314 (14:25). It means that no buffer is provided between these two aircraft. In this case *Buffer-Overlap* alert is assigned to aircraft 1 (see Table 4).

The most important purpose of the tool is to check the traffic against capacity constraints, but it would not be usable if allocation and time constraints are not checked in addition. In this example, there are five capacity constraints that apply at MVT airport:

1. Total number of inward/outward seats in 30/60 min period
2. Module capacity constraint (in this case applies for M3, M4 and M5, due to passport control).

First one represents global constraints, while the second are local constraints.

For each aircraft the tool checks the time frames of 30 min and 60 min before on-block time (t_i^A) and off-block time (t_i^D) against global constraints regarding the number of inward and outward seats, respectively. Additionally, the 60 min time frame before on-block time is checked against local constraints i.e. passport control capacity constraints in this example. All constraints are checked according to the FCFS rule with respect to time of arrival (even

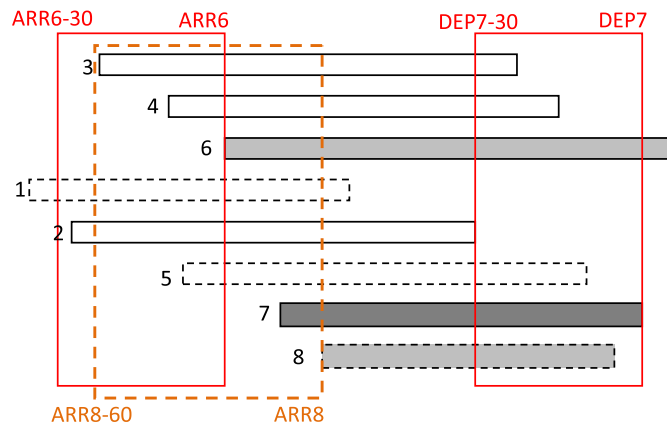


Fig. 5. Examples operational constraints related to terminal view.

when checking constraints against departing passengers).

For global constraints all aircraft caught in the 30/60 min time frame can be taken into consideration, but not necessarily included in the condition, as it will be shown below. In the case of local constraints only those aircraft served in the same module are observed.

Default capacity values (total, and per terminal module) are as given in the example. The tool allows the changing of default values, since this may be required under certain circumstances (e.g. some of the passport counters are out of service, a module is under reconstruction, etc.).

In Fig. 5, the “mechanism” for triggering an alert is illustrated, on several examples. (It is assumed, for illustration purposes alone, that the arrival and departure bar of the same aircraft overlap.)

Any aircraft i is checked against 30 min inward seats constraint, with the condition (4):

$$\sum_{j \in J} seats_j^A \leq seats_{30}^A, J = \{j | t_i^A - 30 \leq t_j^A \leq t_i^A\} \tag{4}$$

$seats_j^A$ – number of seats for aircraft j or updated number of arriving passengers (when available); Table 2 – column 9
 $seats_{30}^A$ – global capacity constraint in arrival flow in 30 min period (in our example 1600 seats)

Only aircraft with an arrival time within the time frame are included in the calculation. If the condition is satisfied for each aircraft, it is assured that the system will be able to serve all incoming passenger-seats throughout a day.

For aircraft 6 in Fig. 5 it applies:

$$seats_2^A + seats_3^A + seats_4^A + seats_5^A + seats_6^A \leq 1,600$$

Any aircraft i is checked against 30 min outward seats, with the condition (5):

$$\sum_{k \in K} seats_k^D \leq seats_{30}^D, K = \{k | t_k^A \leq t_i^A \text{ and } t_k^D \geq t_i^D - 30\} \tag{5}$$

$seats_k^D$ – number of seats for aircraft k or updated number of departing passengers (when available); Table 2 – column 14
 $seats_{30}^D$ – global capacity constraint for departure flow in 30 min period (in our example 1800 seats)

All aircraft having an arrival time before the arrival of the aircraft in question, and having a departure time within the time frame or after the departure time of the aircraft in question, are taken into consideration.

For aircraft 7 in Fig. 5 it applies:

$$seats_3^D + seats_4^D + seats_5^D + seats_6^D + seats_7^D \leq 1,800$$

Aircraft 2 is not included in the condition because it departs before the time frame. Aircraft 8 is not included because its arrival time is later than arrival time of aircraft 7, which means that, following FCFS rule with respect to arrival times, this aircraft does not yet exist in the system.

The same applies to 60 min constraints, respectively for inward and outward (6) and (7) apply:

$$\sum_{j \in J} seats_j^A \leq seats_{60}^A, J = \{j | t_i^A - 60 \leq t_j^A \leq t_i^A\} \quad (6)$$

$$\sum_{k \in K} seats_k^D \leq seats_{60}^D, K = \{k | t_k^A \leq t_i^A \text{ and } t_k^D \geq t_i^D - 60\} \quad (7)$$

$seats_{60}^A$ – global constraint in arrival flow in 60 min period (in our example 3000 seats)
 $seats_{60}^D$ – global capacity constraint for departure flow in 60 min period (in our example 3500 seats)

If the conditions are violated the tool assigns an alert for an **inward/outward seats** violation i.e. *Inward-30 by XX, Inward-60 by XX, Outward-30 by XX or Outward-60 by XX* (Table 3).

Any aircraft i , assigned to terminal module M_i , is checked against hourly capacity constraint with the condition (8)¹⁵:

$$\sum_{l \in L} seats_l^A \leq seats_{M_i}^A, L = \{l | t_l^A - 60 \leq t_i^A \leq t_l^A \text{ and } M_l = M_i\} \quad (8)$$

$seats_{M_i}^A$ – local/module capacity constraint in 60 min period (e.g. 800seats/h for M3 and M5)

Assuming that flights 1, 5 and 8 (dash line bordered bars, Fig. 5) are served by terminal module M3, the condition to check aircraft 8 with respect to the passport control constraint is as follows:

$$seats_5^A + seats_8^A \leq 800$$

If the condition is not satisfied, an alert for **terminal module capacity** violation is assigned to aircraft 8. Only aircraft allocated to the same module with an arrival time within the time frame are included in the calculation.

For example, aircraft I (Table 2) is given alert *3-Inward by 269*, which holds the information that the demand for passport control in module M3 during 60 min period, upon arrival of aircraft I will be for 269 seats/passengers higher than the capacity of this module.

Aircraft II is given the alert *Outward-30 by 165* meaning that demand for service in observed 30 min period will be above the capacity of baggage delivery system by 165 when expressed in seats/passengers.

It may happen that an aircraft has a number of seats that is larger than the capacity of the terminal module, meaning that the violation of hourly capacity comes from a single aircraft. In our example, this type of alert would only be triggered in the case of module M4 (300 seats/h), because the capacity of modules M3 and M5 (800 seats/h) cannot be breached by a single aircraft. **Large aircraft** alert (*Large AC*) is given to aircraft V (Table 2), since its number of seats (374) is above the capacity of module M4 to which it is allocated. This alert indicates that a capacity issue at M4 may be avoided by reallocating large aircraft to other terminal modules (M3 or M5, in this case). If, for any reason, it is not possible to change modules for the large aircraft, this alert suggests to the airport planner that he/she should allow additional time for passenger processing before assigning the next arriving aircraft to the same module.

¹⁵ This is the case when local constraint is on the passport control, i.e. in arrival flow. Different formulation of the condition would apply in one of the processing units in departure flow would impose local constraint.

4. Working with the tool

The column 5 of the traffic table (Fig. 2; Table 4) holds the key information for airport planners. All alerts are also displayed in Terminal or Apron charts and their priorities are differentiated by colours (red, orange and yellow, as indicated in Table 3). An alert is an indicator to airport planner where actions are needed to entirely avoid constraint violation (related to size and allocation rules; or overlapping on the same aircraft stand) or to bring them to lowest possible level in the case of capacity/time constraints.

Being interactive, not automated, the tool is meant primarily for experienced airport operation planners who already keep a wealth of solutions for different conflict situations “in their heads”. However, due to the many constraining factors and their interactions, with an increase of traffic it becomes difficult, or even impossible, for them to imagine the effects of various local decisions/actions on a global traffic situation.

To resolve a conflict situation, an airport planner can: assign a different terminal module/stand; suggest a new landing/off-block time; reject the aircraft, or if the planner is aware that the constraint violation will not affect the system seriously, leave it as it is. For example, aircraft IV is given *Large AC* alert (Table 4), but airport planner can ignore it, if he/she is aware that no other aircraft is expected to be allocated to M3 module in next e.g. 20 min that would allow processing all 374 passengers without causing congestion problems. Also, the alert *Inward-60 by 100* can be ignored if airport planner knows that among the flights scheduled in observed 60 min interval there are those that traditionally carry less luggage by passenger than the average, so it will not cause congestion in baggage delivery area. Unlike *Outward-60 by 100*, as it refers to security check, and should not be brought above the capacity limits as it causes delays and decreases level of service in the building. Similarly, alerts related to *AC stand*, *ARR segment*, *DEP segment* or *Buffer-Overlap*, should not be ignored by airport planner at any time.

Reallocation of the resources aiming to result in solving constraint violations is iterative process. So before making final decision airport planner may need to check the effects of various actions on the traffic situation throughout the day. As previously

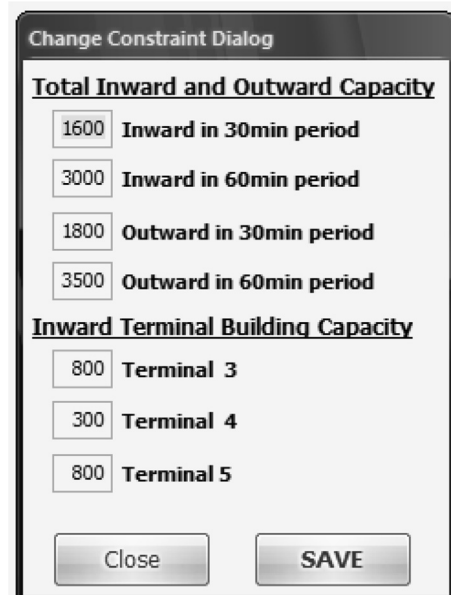


Fig. 6. Change constraint dialogue.

explained, Fig. 2, current traffic situation is displayed in two tables – the main (upper half) and temporary (lower half). The temporary table is changeable, while the main table contains the current traffic situation. Airport planner uses temporary table to insert the changes and try their effects. When the desired changes are inserted in the temporary table, with the *Re-Plan* button these changes are visualized on the Apron and Terminal views. If the airport planner is not satisfied with the outcome of one set of actions, he/she can easily return to the initial state (“stored” in the main table), by dismissing the current trial (the *Cancel Temporary Changes* button). Once the airport planner is satisfied with a solution, he/she accepts it with the *Apply Changes* button. This becomes the new current state, and is automatically re-written into the main table.

The tool also allows the changing of default capacity constraint values when it is necessary. The *Change Constraint* button activates a pop-up window, see Fig. 6, where new temporary values can be inserted. The changes apply for a specified date, as they are connected to conditions at certain date/period (less counters, personnel, conveyor belt out of service, etc.).

All command buttons are available below traffic data tables (Fig. 2).

5. Concluding remarks

The interactive resource allocation tool described in this paper is primarily developed for small-to-medium seasonal airports that operate under serious terminal and apron constraints during a few months of the season and, at the same time, have a complex traffic structure. The tool could also, on occasion, serve as a support to non-seasonal airports, when their demand temporarily approaches available capacity, driven by special events.

The tool complies with small-to-medium airport needs, on one hand, and their readiness to invest in decision support tools, on the other. It was adapted and applied at particular small-to-medium

seasonal airport, up to 5 million passengers/year. Airports of similar size are in such a domain that an experienced airport operations planner, who is familiar with airport structure and operational limitations, as well as general traffic requirements, may see solutions to various conflict situations. However, due to the many constraining factors and their interactions, he/she can hardly realize the effects of different local actions (to resolve particular constraint violations) on a global traffic situation.

Areas for further improvement are primarily those related to capacity constraints imposed by terminal building processes in passenger/baggage arrival and departure flows. For purposes of resource reallocation on a daily level, when passenger numbers are already known, the calculation should be improved, depending on which process is the bottleneck of the system (check-in, security, passport control, etc.). Improvements in this area require prior analysis of passenger flows through the terminal building, in order to get a notion of the time periods (with respect to on-block or off-block times) when passengers are expected to occupy critical processes.

References

- Ashford, N.J., Stanton, H.P.M., Moore, C.A., 1997. *Airport Operations*, second ed. McGraw-Hill, New York, U.S.
- Airport Codes, http://www.photius.com/wfb2001/airport_codes_alpha.html (accessed 07.07.13.).
- AENA Estadísticas, <http://www.aena-aeropuertos.es/csee/Satellite/estadisticas/es> (accessed 07.07.13.).
- Eurocontrol (2007) *A Place to Stand: Airports in the European Air Network*. In: *Eurocontrol Trends in Air Traffic*, vol. 3, 2007.
- Halpern, N., 2011. Measuring seasonal demand for Spanish airports: implications for counter-seasonal strategies. *Res. Transp. Bus. Manag.* 1, 47–54.
- Katsaros, A., Psaraki, V., 2012. Slot misuse phenomena in capacity constrained airports with seasonal demand: the Greek experience. *Transp. Plan. Technol.* 35 (8), 790–806.
- Mirković, B., Vidosavljević, A., Tosic, V., 2013. A tool to support resource allocation at small-to-medium seasonal airports. In: *17th Air Transport Research Society Conference, ATRS 2013*, Bergamo, Italy, June 26–29, 2013.