



# Left atrial appendage dysfunction in acute embolic stroke young patients with sinus rhythm: Correlation with Tissue Doppler mitral annular systolic velocity



Rania Gaber\*, Mai Salama

Department of Cardiology, Tanta University, Egypt

Received 17 May 2016; received in revised form 8 June 2016; accepted 17 June 2016

## KEYWORDS

Stroke;  
Left atrial  
appendage;  
Mitral annular systolic  
velocity

**Abstract** *Background:* Trans-esophageal echocardiogram (TEE) is a gold standard test for diagnosis of left atrial (LA) appendage function.

*Aim:* To evaluate left atrial appendage (LAA) dysfunction using mitral annular systolic velocity measured by tissue Doppler imaging "Sm" in acute embolic stroke young patients with sinus rhythm.

*Methods:* Transthoracic (TTE) and transesophageal echocardiography (TEE) were performed in 70 consecutive patients with sinus rhythm without obvious left ventricular dysfunction within 2 weeks after embolic stroke. Two groups were identified: LAA dysfunction [LAA emptying peak flow velocity (LAA-eV) <0.55 m/s, n = 28, age 52 ± 11 years] and without LAA dysfunction (LAA-eV ≥ 0.55 m/s, n = 42, age 54 ± 10 years) on TEE. Tissue Doppler mitral annular systolic velocity "Sm" was obtained in apical four chambers view on TTE and D-dimer level estimated for all patients.

*Results:* Sm was significantly lower in patients with than in those without LAA dysfunction (P < 0.0001). There was a significant correlation between Sm, LAVI, LAEF%, E/A ratio and LAA-eV in all selected patients groups. The optimum cut-off value of Sm for predicting LAA dysfunction was below or equal 8 cm/s (sensitivity 89.6% and specificity 94.2%).

*Abbreviations:* Sm, mitral annular systolic velocity; LAA, left atrial appendage; LAA-ev, left atrial appendage emptying velocity; TTE, transthoracic echocardiography; TEE, trans-esophageal echocardiography; LAD, left atrial dimension; LVDd, left ventricular end-diastolic dimension; LVEF, left ventricular ejection fraction; E/E', the ratio of the early transmitral flow velocity and the early mitral annular velocity; LAVI, left atrial volume index; LAEF, left atrial emptying fraction; TDI, tissue Doppler imaging.

\* Corresponding author.

E-mail addresses: [raniagaber2009@hotmail.com](mailto:raniagaber2009@hotmail.com), [mohamed\\_rawash2012@yahoo.com](mailto:mohamed_rawash2012@yahoo.com) (R. Gaber).

<http://dx.doi.org/10.1016/j.artres.2016.06.002>

1872-9312/© 2016 Association for Research into Arterial Structure and Physiology. Published by Elsevier B.V. All rights reserved.

**Conclusion:** Tissue Doppler mitral annular systolic velocity is an independent non-invasive easy predictor of LAA dysfunction and significantly correlated with LAA-eV ( $p < 0.0001$ ) in acute embolic stroke young patients with sinus rhythm.  
 © 2016 Association for Research into Arterial Structure and Physiology. Published by Elsevier B.V. All rights reserved.

## Introduction

Cardio-embolic stroke is an important clinical issue, because it is the most common cause of death in patients with acute ischemic stroke.<sup>1,2</sup> Previous clinical reports have prescribed Atrial fibrillation "AF" as independent risk factor for ischemic stroke, increasing the risk by fivefold.<sup>3,4</sup> In a large cohort of patients with paroxysmal AF on aspirin therapy had a stroke rate similar to sustained AF as well as similar stroke risk factors.<sup>5</sup>

The left atrial appendage (LAA) was reported to be a major source of thrombo-embolism in stroke patients with atrial fibrillation.<sup>6–8</sup> Many clinical reports have indicated that left atrial mechanical remodeling is associated with thrombus formation in the LAA.<sup>9–11</sup> The presence of spontaneous echocardiographic contrast or reduced LAA peak flow velocity, as measured by transesophageal echocardiography (TEE), was reported to be useful for detecting LAA dysfunction, which causes thrombus formation in the LAA.<sup>12,13</sup>

LAA dysfunction may play a role as an underlying cause of cardiogenic brain embolism not only in chronic AF but also in paroxysmal AF.<sup>14</sup> Independent of the basic rhythm there is a close relationship between LAA-eV and qualitative parameters of elevated thromboembolic risk, and LAA-eV could be a quantitative parameter for risk stratification. LAA-eV  $\geq 0.55$  m/sec is associated with low risk of LAA thrombosis and spontaneous echo contrast.<sup>15,16</sup>

While transthoracic echocardiography (TTE) is widely used as a screening tool because it is a non-invasive procedure, it is thought to be difficult to detect LAA thrombus and evaluate LAA dysfunction by TTE. Recently pulsed wave tissue Doppler has become a reproducible and readily available technique for measuring atrial function parameters.<sup>17,18</sup> The LAA has a close anatomic and functional relation with lateral mitral annulus and thus annular velocities obtained by TDI may reflect the LAA function.<sup>19</sup> The aim of the present study is to evaluate LAA dysfunction using tissue Doppler mitral annular systolic velocity in acute embolic stroke young patients with sinus rhythm.

## Patients

After ethical committee approval and all patients consent for the study.

The study enrolled 70 patients with sinus rhythm selected from 180 acute stroke patients (confirmed by computed tomography as recent infarction) admitted in neurology department, Tanta university hospital from October 2011 to April 2013 and referred to cardiology department for cardiac evaluation and to exclude cardiac source of embolization. Patients examined within 2 weeks of infarction onset. They were divided into 2 groups according to LAA-eV value detected by TEE.

## Exclusion criteria

- Patients with documented AF either permanent or paroxysmal AF documented by ECG or Holter monitoring.
- Patients with a contraindication to perform TEE such as dysphagia and esophageal stricture
- Patients refusal.
- Patients with low EF%, severe MR and severe diastolic dysfunction ( $E/E' \geq 15$ ).

## Methods

### All patients are subjected to

- I. Detailed history: History of previous attacks of stroke or TIA, hypertension, DM, hyperlipidemia, rheumatic heart disease and the presence of any condition that makes TEE contraindicated. Drug history including ACE inhibitors, anti-arrhythmic drugs and oral anticoagulation.
- II. All patients were underwent full clinical evaluation before trans-esophageal echocardiographic evaluation.
- III. 12 leads ECG to detect and 24 h Holter monitoring to detect atrial flutter, fibrillation and ischemia.

### Laboratory investigations

Including Prothrombin time (PT), International Normalized Ratio (INR) and D-Dimer measured quantitatively using immunoturbidimetric method by SYSMEX CA-1500 automated coagulometer before TEE examination.<sup>20</sup>

#### IV. Transthoracic Echocardiography:

Echocardiograms using 2D-echo and conventional Doppler performed before TEE to detect EF%, E/A ratio, wall motion abnormalities, valvular lesions, diastolic function, presence or absence of thrombi in left atrium, measure the size of the left atrium using M-mode study and LA volume.<sup>21,22</sup> Images were obtained with the patient in the left lateral decubitus position with M3S probe Vivid7, GE Vingmed (Horton, Norway).

#### V. transesophageal echocardiography procedure:

Using 2D-echo the following data was obtained:

- 1 The presence of thrombi and the degree of spontaneous echo contrast that was graded from 0 to 4 according to the following criteria: 0 = none (absence of echogenicity); 1+ mild (minimum echogenicity located in the

LAA or sparsely distributed in the main cavity of the left atrium); 2+ mild to moderate (more dense swirling pattern than 1+ but with similar distribution); 3+ moderate (dense swirling pattern in the LAA, generally associated with somewhat lesser intensity in the main cavity); 4+ severe (intense echo -density and very slow swirling patterns in the LAA, usually with similar density in the main cavity).<sup>13</sup>

- 2 Left atrial appendage for the detection of thrombi and spontaneous echo contrast.
- 3 Mitral valve study, wall motion abnormality, LVH. Color Doppler, PW, CW Doppler were also used.

LAA-eV calculation:

LAA emptying flow velocity (eV) was measured using pulsed wave Doppler, with the sample volume placed 1 cm distal from the mouth of the appendage by TEE. LAA-eV within each RR interval was determined by scanning the appendage at angles between 0° and 90°.<sup>13</sup>

The study group were divided into two groups: group (1) LAA dysfunction group [LAA emptying peak flow velocity (LAA-eV) <0.55 m/s, n = 28, age 52 ± 11 years] and group (2) without LAA dysfunction (LAA-eV ≥ 0.55 m/s, n = 42, age 54 ± 10 years).

VII. Tissue Doppler mitral annular systolic velocity assessment:

Pulsed-wave TDI were performed in apical four chamber, a 5 mm pulsed tissue Doppler volume was subsequently placed at lateral side of mitral annulus. The filter setting was decreased to exclude high-frequency signals and the gain minimized to allow for clear tissue signals with minimal background noise. The sample volume was positioned as parallel as possible with the lateral mitral annular motion.<sup>23</sup> Variables of the tissue velocity evaluated were peak systolic myocardial velocity (Sm) early diastolic myocardial velocity (Em) and late diastolic myocardial velocities (Am).

## Statistical analysis

Results are expressed as means ± standard deviation (SD) for continuous variables and as percentages of the total number of patients for categorical variables. Statistical analyses were performed using SPSS statistical package version. T-tests were used for comparison of continuous variables and Z tests used to compare two proportion.

Multivariate analysis correlation in-between LAA-eV and different echocardiographic parameters done using linear regression test. A receiver operating characteristic (ROC) curve was constructed to determine Sm cut-off value giving optimum sensitivity and specificity for predicting LAA dysfunction.

Inter- and intra-observer agreement on Echocardiographic and Doppler measurements were evaluated by Pearson's r –test.

## Results

**Table 1:** shows the clinical characteristics of the 180 patients with acute stroke. The mean age was 55 ± 13years,

60% of the patients were men, and 45 patients had AF (14 paroxysmal AF, 31 chronic AF). The etiology was cardio-embolic stroke in 63.8% (115 patients, 45 AF excluded and 70 sinus rhythm), athero-thrombotic stroke in 30% (excluded), and lacunar stroke in 6.1% of patients (excluded).

The clinical characteristics of the patients with or without LAA dysfunction are shown in **Table 2**. There were 28 patients with LAA dysfunction, 4 of them LAA thrombus detected and 9 spontaneous echo contrast (6 grade III, 3 grade II).

Patients with LAA dysfunction (LAA-eV < 0.55) had significantly greater E/A ratio, LAEF%, D-dimer and LAVI values compared to those without LAA dysfunction (LAA-eV ≥ 0.55) **Table 3**. Sm was significantly lower in patients with than in those without LAA dysfunction (P < 0.0001) **Table 3, Fig. 2**. There were no significant differences in Simpson LVEF, E', E/E' ratio, A' between patients with or without LAA dysfunction (**Table 3**).

A significant positive strong correlation between measurements obtained for inter-observer agreement r = 0.94 and P < 0.001, and intra-observer agreement r = 0.97, P < 0.001.

There was a significant correlation between Sm, LAVI, LAEF%, E/A ratio and LAA-eV in all selected patients groups (**Table 4, Fig. 3**). The optimum cut-off value of Sm for predicting LAA dysfunction was determined by ROC curve analysis; Sm below or equal 8 cm/s had a sensitivity of 89.6% and a specificity of 94.2%. The area under the ROC curve (AUC) of Sm was 0.91 (**Table 5, Fig. 1**).

**Table 1** Clinical characteristics of all patients (180 patients).

Parameters	Values
Age	55 ± 13
Sex	108 males (60%)
Hypertension	130 (72%)
Dyslipidemia	98 (54.4%)
Diabetes mellitus	40 (22%)
Smoking	84 (46.6%)
Previous stroke	45 (25%)
Paroxysmal AF	14 (7.7%)
Chronic AF	31 (17.3%)
CHA2DS2VASc score	2.7 ± 1.2
Medications	
Anticoagulants	38 (21%)
Warfarin	30 (16.6%)
Dabigatran	8 (4.4%)
Anti-arrhythmic medications	33 (18.3%)
Anti-HTN medications	72 (40%)
ACE inhibitors	38 (21%)
ARBs	20 (11%)
Clinical categories	
Cardio-embolic stroke	115 (63.9)
Athero-thrombotic stroke	54 (30%)
Lacunar stroke	11 (6.1%)

AF = atrial fibrillation, CHA2DS2VASc score before onset of acute stroke.

**Table 2** Clinical characteristics of patients with cardio-embolic stroke and sinus rhythm (70 patients).

Parameters	Without LAA dysfunction = 42 (LAA-ev $\geq$ 0.55)	With LAA dysfunction = 28 (LAA-ev $<$ 0.55)	P value
Age	54 $\pm$ 10	52 $\pm$ 11	0.43
Sex(male)	25 (59.5%)	17 (60.7%)	0.9
Hypertension	21 (50%)	11 (39.2%)	0.36
Dyslipidemia	21 (50%)	15 (53.5%)	0.38
Diabetes mellitus	7 (16.6%)	4 (14.2%)	0.78
Smoking	19 (45.2%)	13 (46.4%)	0.46
Rheumatic heart disease	17 (40%)	15 (53%)	0.28
Previous stroke	7 (16%)	4 (14.3%)	0.84
Medications			
Anti-coagulants (added after TEE)	—	11	S
Warfarin		9	
Dabigatran		2	

LAA eV = left atrial appendage emptying flow velocity.

## Discussion

It is well known that TEE parameters for evaluating LAA dysfunction can predict LAA thrombus formation.<sup>9–11</sup> The presence of spontaneous echo contrast and low LAA eV was reported to be reliable markers for stratifying patients with AF for the risk of thromboembolism.<sup>10</sup> In addition, TTE

parameters such as increased LAD, decreased LA fractional shortening, and increased trans-mitral inflow velocities (E/A) were useful predictors for LAA thrombus. However their predictive values for detecting LAA thrombus were much lower than those of TEE parameters.<sup>24,25</sup>

Recently, studies reported that left atrial wall velocity "LAWV" as measured by TTE can be used to stratify patients

**Table 3** Echocardiographic and tissue Doppler imaging characteristics of patients with cardio-embolic stroke and sinus rhythm (70 patients).

	With LAA dysfunction (LAA-ev $<$ 0.55) = 28 pt	Without LAA dysfunction (LAA-ev $\geq$ 0.55) = 42 pt	P value
LAD(mm)	41 $\pm$ 7	38 $\pm$ 8	0.1
LVEDD(mm)	48 $\pm$ 5	47 $\pm$ 7	0.9
Simpson LVEF (%)	63 $\pm$ 10	59 $\pm$ 11	0.79
E/A	1.09 $\pm$ 0.35	0.87 $\pm$ 0.29	0.0045
Patent foramen ovale	3 (10%)	2 (4%)	0.35
LAVI(ml/m <sup>2</sup> )	34 $\pm$ 15	26 $\pm$ 12	0.016
E/E'	12.7 $\pm$ 1.8	11.9 $\pm$ 1.6	0.055
E'm	9.7 $\pm$ 0.9	10.2 $\pm$ 1.3	0.08
A'm	8.8 $\pm$ 1.4	9.4 $\pm$ 1.2	0.06
E'm/A'm	1.12 $\pm$ 0.15	1.2 $\pm$ 0.18	0.056
LAEF (%)	32.5 $\pm$ 15.3	43.7 $\pm$ 19.2	0.012
Sm(cm/sec)	7.1 $\pm$ 0.9	11.6 $\pm$ 1.0	$<$ 0.0001
D-dimer	349 $\pm$ 97	298 $\pm$ 92	0.03

LAD = left atrial dimension; LVDD = left ventricular end-diastolic dimension; LVEF = left ventricular ejection fraction; E/E' = the ratio of the early transmitral flow velocity and the early mitral annular velocity; LAVI = left atrial volume index; LAEF = left atrial emptying fraction.

LAA eV = left atrial appendage emptying flow velocity, E/A = early diastolic to late diastolic mitral flow Doppler velocities ratio, E' = early diastolic mitral annular velocity, A' = late diastolic mitral annular velocity.

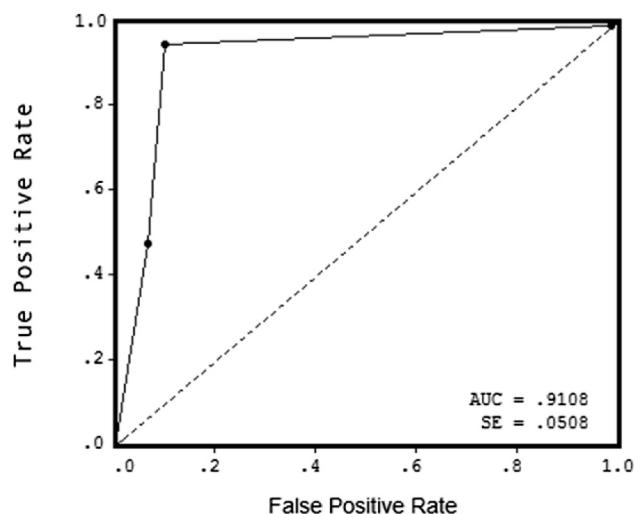
**Table 4** Linear regression correlations in-between LAA-ev and different parameters.

Parameters	F Value	P Value
LAVI	12.17	0.017
LAEF%	8.24	0.034
E/A	15.3	0.011
D-dimer	6.266	0.055
Sm	98.9	<0.0001

**Table 5** ROC curve calculation of sensitivity and specificity of different parameters.

Parameters	Cut off point	AUC	Sensitivity	Specificity
LAVI	28	0.55	70%	55%
E/A	0.95	0.34	60%	62%
LAEF%	30%	0.3	56%	65%
Sm	8	0.91	89.6%	94.2%

with AF for the risk of cardiac stroke.<sup>26,27</sup> However, LAWV cannot necessarily be accurately measured because of the inherent angle dependence. LA peak systolic strain may be a more sensitive parameter than LAWV. It is known that there are three types of LA mechanical function: reservoir, conduit and booster pump function.<sup>28</sup> LA peak systolic strain reflects LA reservoir function. Since LAA clamping during cardiac surgery markedly increases LA pressure and volume, it has been suggested that the LAA may contribute to LA reservoir function, especially in the presence of LA pressure and/or volume overload.<sup>29</sup> Saha et al. (2011) reported that LA strain is an integrated marker of dynamic LA function that shows high reproducibility and identifies patients who are at high clinical risk of thromboembolism as defined by CHADS<sub>2</sub> score.<sup>30</sup> Shih et al. (2011). also reported that LA strain and strain rate are independently associated

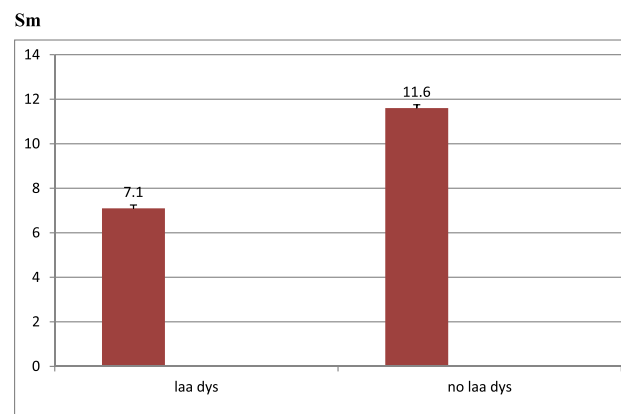
**Figure 1** ROC curve to detect Sm sensitivity % specificity % for LAA dysfunction diagnosis.

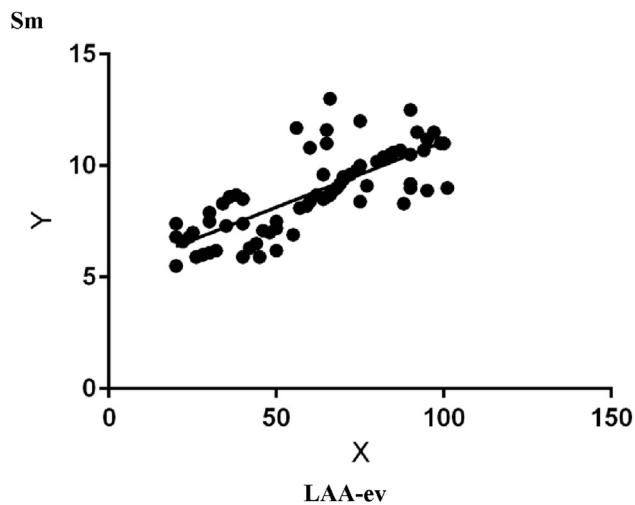
with stroke in patients with permanent AF.<sup>31</sup> Sasaki et al. (2014) have shown a relationship between LA strain and LAA dysfunction such as thrombus formation, in patients with acute ischemic stroke.<sup>32</sup>

However, all above mentioned studies revealed a relationship between LAWV, LA-strain and LAA appendage dysfunction in embolic stroke patients, AF patients were the most of the studied group either permanent or paroxysmal. The current study is the first one demonstrated that there is a relationship between Sm as an easy, non-invasive parameter measured by tissue Doppler and LAA function in acute cardio-embolic stroke young patients with sinus rhythm. Sm was significantly correlated with LAA-eV in patients with sinus rhythm. Multivariate regression analysis showed that a decrease in Sm < 8 cm/se was an independent predictor of LAA dysfunction with 89.6% sensitivity and 94.2% specificity in patients with acute ischemic stroke in sinus rhythm.

Previously, Sasaki et al. 2014<sup>32</sup> investigated whether decreased LA strain may predict LAA dysfunction and thrombus formation in patients with acute ischemic stroke in 120 patients (mean age 72 ± 11 years) within 7 days of onset of an acute ischemic stroke. LA peak systolic strain was significantly decreased in patients with LAA dysfunction compared to those without (32.3 ± 13.7% vs. 12.1 ± 7.2%, p < 0.0001). LA peak systolic strain was significantly correlated with LAA emptying flow velocity (p < 0.0001). The optimum LA peak systolic strain cut-off value for predicting LAA dysfunction was 19% with 92% sensitivity and 86% specificity. The present study differs from Sasaki et al. study in selection of young group of patients with sinus rhythm, Sasaki et al. study included AF patient in the study and also the present study was restricted to cardio-embolic sources only.

Moreover, Kaneko 2014<sup>33</sup> evaluated left atrial appendage (LAA) dysfunction using left atrial pulse-wave tissue Doppler imaging (PW-TDI) in acute cerebral embolism patients with sinus rhythm (SR), transthoracic (TTE) and transesophageal echocardiography (TEE) were performed in 60 consecutive patients with SR without obvious left ventricular dysfunction within 2 weeks after ACE. Two groups were identified: LAA dysfunction (LAA emptying peak flow velocity (LAA-eV) < 0.55 m/s) and without LAA

**Figure 2** Sm mean values in LAA dysfunction and normal function group (p < 0.0001).



**Figure 3** Linear regression correlation of Sm and LAA-ev (X = LAA-ev, Y = Sm).

dysfunction (LAA-eV  $\geq$  0.55 m/s) on TEE. Left atrial wall motion velocity (WMV) was obtained from PW-TDI. It was significantly lower in the group with versus without LAA dysfunction and prevalence of paroxysmal atrial fibrillation, left atrial volume index, and serum levels of brain natriuretic peptide were significantly higher. They concluded that La' was an independent predictor of LAA dysfunction and was significantly correlated with LAA-eV ( $p < 0.0001$ ) and LAA fractional area change ( $p < 0.0001$ ). The La' optimal cut-off value for LAA-eV  $< 0.55$  m/s was 5.5 cm/s (sensitivity 83%, specificity 88%).

From our point of view the present study endorses a new simple non-invasive parameter to diagnose LAA dysfunction and select patients indicated for TEE. This also raise the possibility of anti-coagulation in cardio-embolic stroke young patients with sinus rhythm. Further larger multi-centers studies on larger number of patients are needed to compare between different parameters sensitivity, specificity to diagnose LAA dysfunction in same group of patients, either to select one or to gather different parameters for higher level LAA dysfunction prediction.

## Conclusion

Tissue Doppler mitral annular systolic velocity is an independent non-invasive easy predictor of LAA dysfunction and significantly correlated with LAA-eV ( $p < 0.0001$ ). The optimal cut-off value for Sm  $< 8$  cm/se (sensitivity 89.6%, specificity 94.2%) is a useful and convenient strong predictor of LAA dysfunction in acute embolic stroke young patients with sinus rhythm.

## Study limitations

- 1 small number of study group
- 2 No control group as TEE is semi-invasive procedure, none accepted to do without a cause.

## Conflict of interests

None declared.

## References

1. National Institute of Neurological Disorders and Stroke. Special report: classification of cerebrovascular diseases III. *Stroke* 1990;21:637–76.
2. Cooper R, Culter J, Desivigne-Nickens P, Fortmann SP, Friedman L, Havlik R, et al. Trend and disparities in coronary heart disease, stroke and other cardiovascular diseases in the United States: findings of the national conference on cardiovascular disease prevention. *Circulation* 2000;102:3137–47.
3. Go AS, Hylek EM, Phillips KA, Chang Y, Henault LE, Selby JV, et al. Prevalence of diagnosed atrial fibrillation in adults: national implications for rhythm management and stroke prevention: the Anticoagulation and Risk Factors in Atrial Fibrillation (ATRIA) Study. *JAMA* 2001;285:2370–5.
4. Wolf PA, Abbott RD, Kannel WB. Atrial fibrillation as an independent risk factor for stroke: the Framingham Study. *Stroke* 1991;22:983–8.
5. Hart RG, Pearce LA, Rothbart RM, McAnulty JH, Asinger RW, Halperin JL. Stroke with intermittent atrial fibrillation: incidence and predictors during aspirin therapy. Stroke Prevention in Atrial Fibrillation Investigators. *J Am Coll Cardiol* 2000;35:183–7.
6. Benjamin EJ, Wolf PA, D'Agostino RB, Silbershatz H, Kannel WB, Levy D. Impact of atrial fibrillation on the risk of death: the Framingham Heart Study. *Circulation* 1998;98:946–52.
7. Takada T, Yasaka M, Nagatsuka K, Minematsu K, Yamaguchi T. Blood flow in the left atrial appendage and embolic stroke in non-valvular atrial fibrillation. *Eur Neurol* 2001;46:148–52.
8. Garcia-Fernandez MA, Torrecilla EG, San Roman D, Azevedo J, Bueno H, Moreno MN. Left atrial appendage Doppler flow patterns: implications on thrombus formation. *Am Heart J* 1992;124:955–61.
9. Verhorst PM, Kamp O, Visser CA, Verheugt FW. Left atrial appendage flow velocity assessment using transesophageal echocardiography in nonrheumatic atrial fibrillation and systemic embolism. *Am J Cardiol* 1993;71:192–6.
10. Kamp O, Verhorst PM, Welling RC, Visser CA. Importance of left atrial appendage flow as a predictor of thromboembolic events in patients with atrial fibrillation. *Eur Heart J* 1999;20:979–85.
11. Sparks PB, Mond HG, Vohra JK, Yapanis AG, Grigg LE, Kalman JM. Mechanical remodeling of the left atrium after loss of atrioventricular synchrony: a long-term study in humans. *Circulation* 1999;100:1714–21.
12. Zabalgoitia M, Halperin JL, Pearce LA, Blackshear JL, Asinger PW, Hart RG. Trans-esophageal echocardiographic correlates of clinical risk of thromboembolism in nonvalvular atrial fibrillation. *J Am Coll Cardiol* 1998;31:1622–6.
13. Fatkin D, Kelly RP, Feneley MP. Relationship between left atrial appendage blood flow velocity, spontaneous echocardiographic contrast and thromboembolic risk in vivo. *J Am Coll Cardiol* 1994;23:961–9.
14. Kaneko K, Hirono O, Fatema K, Zhang X, Takeishi Y, Kayama T, et al. Direct evidence that sustained dysfunction of left atrial appendage contributes to the occurrence of cardiogenic brain embolism in patients with paroxysmal atrial fibrillation. *Intern Med* 2003;24:1077–83.
15. Handke M, Harloff A, Hetzel A, Olschewski M, Bode C, Geibel A. Left atrial appendage flow velocity as a quantitative surrogate parameter for thromboembolic risk: determinants and relationship to spontaneous echocontrast and thrombus formation: a transesophageal echocardiographic study in 500 patients

- with cerebral ischemia. *J Am Soc Echocardiogr* 2005;18:1366–72.
16. Sadanandan S, Sherrid MV. Clinical and echocardiographic characteristics of left atrial spontaneous echo contrast in sinus rhythm. *J Am Coll Cardiol* 2000;35:1932–8.
  17. Thomas L, Levett K, Boyd A, Leung DY, Schiller NB, Ross DL. Changes in regional left atrial function with aging: evaluation by Doppler tissue imaging. *Eur J Echocardiogr* 2003;4:92–100.
  18. Boyd AC, Schiller NB, Ross DL, Thomas L. Segmental atrial contraction in patients restored to sinus rhythm after cardioversion for chronic atrial fibrillation: a color Doppler tissue imaging study. *Eur J Echocardiogr* 2008;9:12–7.
  19. Al saady NM, Obel OA, Camm AJ. Left atrial appendage: structure, function and role in thromboembolism. *Heart* 1999;82(5):547–54.
  20. Lip GY, Frison, Grind M. Stroke events rates in anticoagulated patients with paroxysmal atrial fibrillation. *J Intern Med* 2008;264:50.
  21. American Society of Echocardiography, Committee on Standards. Recommendations for quantitation of the left ventricle by two-dimensional echocardiography. *J Am Soc Echocardiogr* 1989;2:338–67.
  22. Oh JK, Seward JB, Tajik J. Assessment of diastolic function. In: Oh JK, editor. *The echo manual*. 2nd ed. Philadelphia: Pa: Lippincott Williams & Wilkins; 1999. p. 45–57.
  23. Tumuklu MM, Etikan I, Cinar CS. Left ventricular function in professional football players evaluated by tissue Doppler imaging and strain imaging. *Int J Cardiovasc Imaging* 2008;24(1):25–35.
  24. Ling L, Hirono O, Okuyama H, Takeishi Y, Kayama T, Kubota I. Ratio of peak early to late diastolic filling velocity of the left ventricular inflow is associated with left atrial appendage thrombus formation in elderly patients with acute ischemic stroke and sinus rhythm. *J Cardiol* 2006;28:75–84.
  25. Korinek J, Wang J, Sengupta PP, Miyazaki C, Kjaergaard J, McMahon E, et al. Two dimensional strain. A Doppler-independent ultrasound method for quantitation of regional deformation. Validation in vitro and in vivo. *J Am Soc Echocardiogr* 2005;18:1247–53.
  26. Tamura H, Watanabe T, Hirono O, Nishiyama S, Sasaki S, Shishido T, et al. Low wall velocity of left atrial appendage measured by trans-thoracic echocardiography predicts thrombus formation caused by atrial appendage dysfunction. *J Am Soc Echocardiogr* 2010;23:545–52.
  27. Tamura H, Watanabe T, Nishiyama S, Sasaki S, Wanezaki M, Arimoto T, et al. Prognostic value of low left atrial appendage wall velocity in patients with ischemic stroke and atrial fibrillation. *J Am Soc Echocardiogr* 2012;25:576–83.
  28. To AC, Flamm SD, Marwick TH, Klein AL. Clinical utility of multimodality LA imaging: assessment of size, function, and structure. *JACC Cardiovasc Imaging* 2011;4:788–98.
  29. Tabata T, Oki T, Yamada H, Iuchi A, Ito S, Hori T, et al. Role of left atrial appendage in left atrial reservoir function as evaluated by left atrial appendage clamping during cardiac surgery. *Am J Cardiol* 1998;81:327–32.
  30. Saha SK, Anderson PL, Caracciolo G, Kiotsekoglou A, Wilansky S, Govind S, et al. Global left atrial strain correlates with CHADS2 risk score in patients with atrial fibrillation. *J Am Soc Echocardiogr* 2011;24:506–12.
  31. Shih JY, Tsai WC, Huang YY, Liu YW, Lin CC, Huang YS, et al. Association of decreased left atrial strain and strain rate with stroke in chronic atrial fibrillation. *J Am Soc Echocardiogr* 2011;24:1247–53.
  32. Sasaki Sh, Watanabe T, Tamura H, Nishiyama S, Wanezaki M, Sato C, et al. Left atrial strain as evaluated by two-dimensional speckle tracking predicts left atrial appendage dysfunction in patients with acute ischemic stroke. *BBA Clin* 2014;2:40–7.
  33. Kaneko K, Otaki Y, Kadowaki S, Narumi T, Saito H, Kiribayashi N, Omi K, et al. Left atrial appendage dysfunction in acute cerebral embolism patients with sinus rhythm: correlation with pulse wave tissue Doppler imaging. *Int J Cardiovasc Imaging* 2014;30(7):1245–54.