



Research Article

A review of information system integration in mergers and acquisitions

Stefan Henningsson¹, Philip W. Yetton², Peter J. Wynne¹

¹Department of Digitalization, Copenhagen Business School, Howitzvej 60, 2000 Frederiksberg, Denmark;

²Department of Information Systems and Business Analytics, Deakin University, Burwood, VIC 3125, Australia

Correspondence:

S Henningsson, Department of Digitalization, Copenhagen Business School, Howitzvej 60, 2000 Frederiksberg, Denmark.

Tel: +45 2479 4329;

E-mail: sh.digi@cbs.dk

Abstract

For three decades, research has investigated the role of information systems integration (ISI) in mergers and acquisitions (M&As). This research has improved our understanding of the M&A IS challenges and their solutions. However, consolidation and integration across the research is limited. To redress this omission, we review 70 articles published between 1989 and 2016. To do this, we adopt and extend the methodology developed by Lacity and her colleagues to review the empirical evidence in a fragmented IT literature. We code 53 dependent variables and 195 independent variables to identify the robust relationships among them and to model how ISI decisions, including the choice of IS integration methods, partially mediate the effects of the independent variables on ISI outcomes. Examining the relationships in this model, we identify five quasi-independent thematic domains on which we draw to develop an agenda for future research. Our contribution is the aggregation, organization and structuring of the empirical findings in the M&A ISI literature as a basis on which to develop a cumulative knowledge process.

Journal of Information Technology (2018), <https://doi.org/10.1057/s41265-017-0051-9>

Keywords: merger; acquisition; information systems; integration; literature review

Introduction

In 2016, 46,000 mergers and acquisitions (M&As) were recorded with a total value of more than US\$3.7 trillion (Thomson Reuters, 2017). M&As are a source of great opportunity for a few companies, including Cisco, Cemex and Santander (Kanter *et al.*, 2007; Busquets, 2015; Toppenberg *et al.*, 2015), but are frequently challenging and problematic for the many. In practice, 60–70% of M&As in the private sector destroy rather than create financial value as measured by short-term performance, long-term performance and market value (see, for example, King *et al.*, 2004).

Stimulated by the growth in activity, M&As have become a subject of research in several academic fields. Haleblian *et al.* (2009) reviewed M&A research in the accounting, economics, finance, management and sociology literature from 1992 to 2007. They identified 864 articles that examine the challenges to successful M&As and recommend how to overcome those challenges. The research shows that M&As are multifaceted phenomena to which financial, strategic, managerial, sociological, organizational and psychological research contributes insights and normative recommendations.

One critical factor not considered by Haleblian *et al.* (2009) is that businesses have become pervasively dependent on their information systems (IS). These now play a critical role in the realization of value in M&As. Sarrazin and West (2011) estimate that 45–60% of the expected benefits from M&As directly depend on IS integration (ISI). Similarly, a survey by Accenture reports that ISI is the second most important reason for M&A failures, causing billions of dollars in losses (Accenture, 2006).

In response to these and other surveys, research on the role of ISI in M&As has increased, documenting an emerging understanding of ISI as a highly diverse challenge. Three cases illustrate this diversity. First, Yetton *et al.* (2013) explain why the Danish sugar producer, Danisco, had to halt its acquisition program after several years to consolidate its scattered IT infrastructure onto one standardized central IT platform that could support a growth-by-acquisition strategy in the area of food ingredients. The accumulated IT infrastructure, consisting of more than 150 different ERP systems that were loosely integrated with peer-to-peer interfaces and middleware,

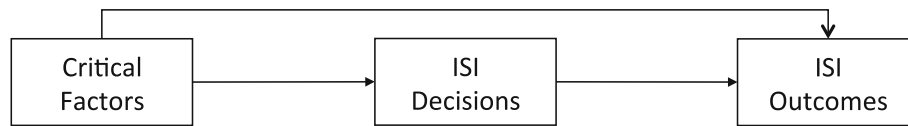


Figure 1 Review model.

made continued growth slow and costly. The critical challenge for Danisco was to develop the capacity of the IT infrastructure to support growth. This took Danisco several years and could not have been financially justified by a single acquisition.

Second, the Teaching Health Centre (THC) case (Vieru and Rivard, 2014) shows how people involved in ISI affect the outcome significantly. They interpret, object, politicize, discover and, in many other ways, shape the unfolding ISI, creating unintended work processes, structures and power relationships. The initial design for THC, a merger of three Canadian hospitals, was based on best practice, but the final configuration revealed a blend of industry standards and local premerger contingencies. Personnel at the different sites actively engaged in interpreting the new systems, shaping them to work within premerger working procedures, norms and cultures.

Third, the Mekong-Indus acquisition (Mehta and Hirschheim, 2007) illustrates how external factors, particularly time pressure, exacerbate the ISI challenges. Because of shareholder pressure to quickly realize the merger synergies, Mekong decided to standardize the post-acquisition combined businesses based on its own IS platform. This was despite the fact that the Indus IS platform was generally considered to be a better fit for the new organization's business aspirations. Mekong management considered the Indus systems to be unproven and that adopting it would be high risk. However, after a few years of struggling with operating on Mekong's preacquisition IS platform, the combined organization migrated to an updated platform similar to the Indus platform that had been retired during the merger project.

The three cases illustrate how critical factors, including, for example, time pressures and IT platform flexibility, affect ISI outcomes. The cases also illustrate how ISI decisions, including diagnosis, planning and implementation, both affect ISI outcomes and partially mediate the effect on ISI outcomes of other variables, including time pressures and IT platform flexibility. To explain these relationships, the literature on ISI in M&A has adopted at least 18 different theoretical perspectives and has employed grounded theory approaches to identify new and intriguing aspects of the phenomenon. However, because of this theoretical diversity and the explorative research approaches, the literature is fragmented (Wijnhoven *et al.*, 2006) and has evolved in a non-cumulative way (Mehta and Hirschheim, 2007; Henningson and Carlsson, 2011) with inconsistent definitions and conceptualizations.

We address the fragmentation by aggregating, organizing and structuring the findings in the M&A IS literature. To do this, we adopt the methodology outlined by Jeyaraj *et al.* (2006) and developed by Lacity *et al.* (2010, 2011, 2016) that was specifically designed to consolidate the knowledge in

another fragmented IT literature, namely the IT outsourcing literature. Within this approach, the review is guided by a single research question:

- *How to aggregate, organize and structure what we know about M&A ISI decisions and their outcomes?*

To answer this question, we examine 70 articles published between 1989 and 2016. We inspect both the quantitative and qualitative researches to identify the most frequently studied constructs and the relationships among those constructs. Specifically, we investigate the variables that affect ISI decisions and ISI outcomes. Aggregating these findings, we develop a descriptive model of the robust findings that explain how ISI decisions partially mediate the effects on ISI outcomes of the critical M&A factors (Figure 1), where robust findings are defined as empirical findings that have been replicated a minimum of five times in the ISI literature (see methodology section for explanation).

This review is written primarily for an academic readership with an interest in M&A ISI research. The output of Lacity *et al.*'s (2010, 2011, 2016) methodology is not a theory or a theoretical model. Instead, it is a structured documentation of the findings in a research domain. Taken together, the research reviewed here contributes a consolidated base of the existing, robust findings in M&A ISI research. Inspecting these findings, we identify five research themes. Discussing the themes, we propose new research questions to develop each theme and briefly speculate how research between the themes could develop our overall understanding of M&A ISI.

The remainder of this review is structured as follows. First, we describe the Lacity *et al.* (2010, 2011, 2016) protocol to identify the robust relationships in the M&A ISI literature and our extension to their protocol to identify five themes to structure the interdependences among the robust relationships. Second, the findings are presented in two sections. One begins by setting the context with a short overview of the M&A ISI research over three decades, then identifies and presents the robust relationships in the literature. The other section examines the density of relationships among the robust findings to identify five research themes and to develop future research questions within and between the themes. Finally, we discuss the implications of our findings for future research and present a short conclusion.

Methodology

M&A ISI research is fragmented across many authors and theories, and across the explorative case studies of the challenges to M&A ISI. For example, only one author, Yetton (Johnston and Yetton, 1996; Böhm *et al.*, 2011; Henningson and Yetton, 2011; Yetton *et al.*, 2013), from the first decade continued publishing in this domain after 1999, and few



theories or concepts have consistently been the subject of research. An exception to the latter observation is the frequent study of the choice of methods to implement M&A ISI as both a dependent variable and an independent variable in ISI research. In addition, the research has been practice led rather than theory driven, with many practitioner authors. Indeed, many studies are atheoretical and report only empirical findings.

Inspecting the literature, there are no two or three dominant analytical frameworks on which to base a traditional narrative, theory-based review. Instead, the literature includes research that ranges across many different topics, including studies of politics and power (Kovela and Skok, 2012), the effects of stock market-based time pressures on ISI project performance (Tanriverdi and Uysal, 2011) and rebuilding the acquisition target's supply chain management system on the acquirer's IT platform (Yetton *et al.*, 2013).

Responding to these characteristics, this review adopts an empirical-based (see, for example, Lacity *et al.*, 2016), rather than a theoretical-based approach (Leidner and Kayworth, 2006). The role of data as a basis for theory development is a position shared by many researchers, including those who adopt methodologies as distinct as grounded theory methodology (Strauss and Corbin, 1990) and meta-analysis (see, for example, Hunter and Schmidt, 2004). As Hunter and Schmidt (p xxvii) write: 'There are two steps to the accumulation of knowledge: (1) the accumulation of results across studies to establish facts, and (2) the formulation of theories to organize the facts into a coherent and useful form.' The primary focus of this review is the first step: the established facts (empirical findings) across studies in the M&A ISI literature.

Here we describe, classify and present a descriptive model of what is known about M&A ISI. This is similar to the reviews by Lacity *et al.* (2010, 2011, 2016) that Rowe (2014) defines as an example of a descriptive review. Adopting and extending the Lacity *et al.* protocol, we describe our review protocol under three headings: locate and select, code and aggregate.

Locate and select

To identify the relationships to review, we first drew on our knowledge of the domain to select databases that contain journals and conference proceedings on the general topic of M&A ISI. We also drew on Webster and Watson (2002), Boell and Cecez-Kecmanovic (2015b) and Okoli and Schabram (2010) to design a rigorous literature search. By searching databases, as opposed to specific journals, we included sources other than those with which we were already familiar. As Webster and Watson point out, IS is a multidisciplinary field, and, therefore, it was important to conduct a broad search to identify articles outside a limited sample based, for example, on only the AIS library and the Basket of Eight journals.

We searched for empirical articles on the phenomena of M&A ISI in ABI Inform, AISel library, EBSCOhost, JSTOR, Science Direct and Springer Link using the search terms of 'information systems,' 'information technology,' 'IS,' 'integration,' 'acquisition,' 'merger,' 'M&A,' 'acquire' and 'merge.' As recommended by Boell and Cecez-Kecmanovic (2015b), we widened our search as we became more familiar

with other terminologies, research and authors. Finally, we extended the search by performing backward and forward searches (Webster and Watson, 2002).

Collectively, the searches of the six databases identified 563 publications for potential inclusion in the review. Inspecting the titles and abstracts of these publications, articles were judged to be relevant only if they specifically researched the phenomenon of ISI in the M&A context. Of the initial list of 563 articles, 461 were judged not to be relevant. Most frequently, this was because the articles researched the integration of new IT systems, rather than the integration of IS in M&As.

We agree with Boell and Cecez-Kecmanovic (2015a) that, even for experienced reviewers, judging whether a paper is relevant to a review only on its title and abstract is difficult and subject to error. Therefore, we took a conservative approach to minimize false negatives by reviewing in full any paper about which there was any doubt as to whether the paper did, or did not, study M&A ISI. A further 43 publications were rejected after full reviews because they included topics judged to be tangential to our focus on M&A ISI. Frequently, these included conceptual or methodological papers. In addition, some papers that had been provisionally accepted were rejected. These were conference papers that were later published as journal papers, and which are included in the sample.

This database-driven search was incomplete because several journals and conferences were not indexed throughout the time span for the search. For example, the AISel library indexes AMCIS only after 1997, and the Information Systems Journal is included in the Business Source Complete database only after 1997. To compensate for these limitations, and to widen the search as recommended by Webster and Watson (2002), we conducted backward and forward searches for additional articles.

In the backward search, we reviewed the reference lists of the articles included in the preliminary sample to identify relevant articles not captured by our database search. For the forward search, Thomson Reuters' Web of Science and Google Scholar were used to identify articles that reference articles already included in the sample. These searches identified eight additional articles and three unpublished PhD theses (Linder, 1989; Tafti, 2009; Glazar-Stavnicky, 2016). Other relevant PhD theses were identified but were not included in the sample because their relevant findings are included in subsequent journal publications (e.g., Alaranta and Henningson, 2007, 2008).

The final sample contained 67 articles and three PhD theses. For shorthand, this sample of 70 studies is henceforth referred to as the sample of 70 articles published between 1989 and 2016. The complete list of the studies included in the review sample is reported in 'Appendix A.' This appendix also presents an overview of the unit of analysis, empirical data, industry context and theoretical framing for each study in the sample. Table 1 lists the publication sources of the review sample.

Code

To identify the constructs to be investigated in this review, we adopted the coding protocols for open coding, axial coding and constant comparison that are specified in grounded

Table 1 Publication frequency by source.

Outlet	Articles
International Conference on Information Systems	7
Information & Management	5
European Conference on Information Systems	4
European Journal of Information Systems	4
Journal of Strategic Information Systems	4
Pacific Asia Conference on Information Systems	4
Management Information Systems Quarterly Executive	3
PhD thesis	3
Americas Conference on Information Systems	2
Hawaii International Conference on System Sciences	2
Information Systems Research	2
Long Range Planning	2
MIS Quarterly Executive	2
ASCI Journal of Management	1
Australasian Conference on Information Systems	1
Business Information Systems	1
Business & Information Systems Engineering	1
Computers & Security	1
Communications of the IIMA	1
Enterprise Information Systems	1
European Management Journal	1
Health Informatics Meets eHealth	1
Industrial Engineering and Management Systems	1
Industrial Management & Data Systems	1
Information Systems Frontier	1
Information Systems Journal	1
International Journal of Business and Management	1
International Journal of Information Management	1
International Multiconference on Computer Science and Information Technology	1
Journal of Engineering and Technology Management	1
Journal of International Technology and Information Management	1
Journal of Information Technology Theory and Application	1
Journal of Leadership, Accountability and Ethics	1
Journal of Management Information Systems & E-commerce	1
Journal of Social and Organizational Dynamics	1
Journal of Systems and Information Technology	1
Journal of the AIS	1
Management Information Systems Quarterly	1
Practice-driven Research on Enterprise Transformation	1
Grand total	70

theory methodology (Strauss and Corbin, 1990) to develop a list of master codes and their definitions/descriptions. Creating the list was a five-step iterative process that required coding individual papers multiple times.

First, two of the authors, with experience in qualitative research and grounded theory methodology, independently coded 20 randomly selected articles from the sample of 70

articles. They listed each dependent and independent variable as named and described in each article. These became the list of ‘author variables’ and ‘author variable descriptions.’

The two authors then met to identify the variables that could be combined across studies to begin to build the two lists of ‘master variables’ and ‘master variable descriptions.’ For example, Alaranta and Kautz (2012) use the term ‘culture conflict,’ while Weber and Pliskin (1996) and Robertson and Powell (2001) use the term ‘culture clash’ to refer to a similar phenomenon of friction between the merging units’ organizational cultures that spills over on to the ISI project. Some variables required careful consideration. For example, we coded a number of variables that describe the effects on the people involved in the merger, including stress from additional work tasks and the loss of required competences. In those situations, we resolved coding consolidation through discussions among the authors.

Second, during the next iteration, the same authors independently coded another random set of 20 articles. As before, they coded the dependent and independent variables used in each study. They also mapped the variables onto the master list of variables and descriptions. They then met to compare and discuss any differences in the two sets of codes.

Third, the remaining 30 articles were coded by the two authors. As new variables and descriptions were added to the master list, the two authors reviewed previously coded articles to determine whether they needed to be recoded based on the extended master list. This process was repeated until all the articles had been coded.

Fourth, when all articles had been coded, one author did a final review of each article to check that the codes for all variables in the 70 articles were consistent with the final master list. By following this method, we standardized the variables across articles that used different terms to capture essentially the same variable. The final list of master codes and their descriptions is presented in ‘Appendix B.’

Fifth, for each paper we then identified independent and dependent variables and documented relationships between the two variable types. Doing so, we documented 619 relationships in the 70 articles. As recommended by Lacity *et al.* (2010, 2011, 2016), we coded significant positive relationships as ‘+ 1,’ significant negative relationships as ‘− 1’ and nonsignificant relationships as ‘0.’ In quantitative studies, we relied on the values of test statistics to judge whether the relationships are significant. In qualitative studies, we based our judgments on the strength of the verbal arguments.

Significant relationships that include categorical variables are coded M because no direction, positive or negative, could be assigned to the relationships. For example, in Toppenberg (2015), industry is operationalized as a categorical variable referring to the specific industry of the M&A. While in some studies in the sample that employ categorical variables, it is possible to speculate that there is an underlying dimension on which the categories could be assigned, we did not do this if the authors treated the variables as distinct categories. Critically, coding relationships M (rather than positive or negative) does not affect the *total* number of significant relationships among these variables in the analysis below. Instead, this protocol affects only the *relative* number of significant variables that are coded positive/negative or as

**Table 2** Coding protocol.

Relationship	Code	Meaning	Quantitative example	Qualitative example
Significant positive	+ 1	<i>Positive relationship</i> higher values of the independent variable are associated with higher values of the dependent variable; $P < 0.05$ for quantitative studies or strong argument by authors for qualitative studies	Tanriverdi and Uysal (2011): 'Cross-business IT integration capability' has positive effects on 'stock-market reaction' and 'operating profit'	Busquets (2015): 'Discovery'-oriented planning has a positive effect on 'IS synergies'
Significant negative	- 1	<i>Negative relationship</i> higher values of the independent variable are associated with lower values of the dependent variable; $P < 0.05$ for quantitative studies or strong argument by authors for qualitative studies	Robbins and Stylianou (1999): 'User involvement in IS decision' has a negative effect on 'ISI success'	Holm-Larsen (2005): 'IT extensiveness' has negative effects on 'ISI project time' and 'ISI project cost'
Significant matter	M	A relationship between a categorical independent variable and a dependent variable mattered; $P < 0.05$ for quantitative studies or strong argument by authors for qualitative studies	NA	Henningsson (2015): 'ISI method' matters for the dependent variable 'ISI capabilities'
Not significant	0	A nonsignificant relationship is reported	Morsell <i>et al.</i> (2009): 'IS employee morale' has a nonsignificant effect on 'ISI success'	Baker and Niederman (2014): 'Post-merger alignment' has a nonsignificant effect on 'Merger benefits'

generally mattering. Table 2 provides an overview of the guidelines adopted to code relationships in the 70 reviewed articles.

Aggregate

The aggregation process involves two steps. In step 1, we follow Lacity *et al.* (2010) to identify the robust findings reported in the M&A ISI literature. Robust findings are relationships that are replicated at least five times in the literature: These are the facts in Hunter and Schmidt's (2004) terms. To do this, we aggregate across relationships that include variations on the same underlying constructs.

Then, in step 2, we extend Lacity *et al.*'s approach to organize and structure the robust relationships into five themes: the ISI context, relational fit, the human side, preconditions and time pressures. Doing this, we create a research database within which researchers can locate their research or on which they can draw to motivate research. Essentially, this step is a precondition to support and focus the theorizing that Hunter and Schmidt (2004) describe as step 2 in their research strategy.

Step 1: Identifying the robust relationships

Our review identified a large number of dependent and independent variables. To facilitate the identification and presentation of the robust relationships among them, we mapped the variables onto a limited number of categories. To do this, we followed a grounded sorting process based on the principles of the constant comparison method (Strauss and Corbin, 1990). Disagreements on categorization were resolved by the researchers through discussion (Saldaña, 2009).

This process was chosen to capture and document the variety in the research, rather than restricting that variety by selecting those findings that could be integrated within a single or limited number of theoretical frameworks. Importantly, this categorization process introduces only an organizing layer for improved presentation and does not affect the analysis of the robust findings, or of the five research themes. For researchers who wish to map the variables within various theoretical frameworks, the full set of variables is presented in 'Appendix C.'

We found 619 relationships involving the effects of 195 independent variables on 53 dependent variables. For reference, the full list of relationships between variables is presented in 'Appendix D.' At this fine-grained level of analysis, the frequency with which findings are replicated across studies is minimal. To aggregate the empirical literature to be concise, meaningful and well-structured, we follow Lacity *et al.*'s (2010, 2011, 2016) methodology and move to a higher-level of abstraction.

To do this, we partition the 619 findings into two broad categories for the dependent variable: ISI decisions and ISI outcomes (see 'Appendix C'). We retain the specific independent variables and sort them by frequency within the two broad categories. Although we lose some precision when we aggregate the findings, we gain a better overall understanding of the variables that affect M&A ISI decisions and outcomes.

To identify the independent variables that consistently have an effect on ISI decisions and ISI outcomes, we follow two decision rules proposed by Lacity *et al.*'s (2010, 2011, 2016) methodology. One is to extract the relationships that have been examined by researchers at least

five times. Although five may seem an arbitrary number, it has been used elsewhere in this type of review as a means by which to identify ‘well-utilized’ variables (Jeyaraj *et al.*, 2006; Lacity *et al.*, 2010, 2011, 2016). Restricting our results to only those studied five or more times ensures they can be relied on as solid evidence and not emergent concepts. However, quantity alone is not a suitable measure; therefore, we couple this with a second decision rule: to differentiate between the levels of 60–80% and above 80% corroboration across findings. Lacity *et al.* (2010, 2011, 2016) report that these decision rules were valuable in their research to distil nuances within the IT outsourcing literature.

Consistent with Lacity *et al.*’s (2010, 2011, 2016) methodology, we use ‘(++)’ to indicate that more than 80% of the time, when a relationship has been examined, the authors found a positively significant relationship. For example, in ‘Appendix C,’ IT flexibility has been examined seven times in relation to ISI outcome and, in all seven cases, it is found to positively and significantly affect ISI outcomes. Therefore, we

assign the relationship between IT flexibility and ISI outcome the symbol ‘(++)’ We use a ‘(+)’ when 60–80% of the evidence is positively significant.

Conversely, we use ‘(– –)’ to indicate when more the 80%, and ‘(–)’ when 60–80%, of the evidence shows a negative relationship. Consistent with this notation, we use ‘(00)’ and ‘(0)’ to indicate when 80% or more, or between 60 and 80%, are found to not have a significant relationship. Finally, we use ‘(MM)’ to indicate when more than 80% of the evidence shows an independent variable mattered when operationalized as a categorical variable, and ‘(M)’ to indicate when it mattered in 60–80% of the studies.

Step 2: Integrating relationships within research themes

To begin to address the challenge of fragmentation represented by the large number of robust relationships identified, we extended the Lacity *et al.* (2010) protocol to investigate whether there are a limited number of research themes that structure and contextualize those relationships. To address

Table 3 Most studied robust relationships.

<i>Independent variable</i>	<i>Dependent variable</i>	<i>Count</i>	<i>Thematic association</i>
IS–business collaboration in planning	Outcome	14	A
Application and IT compatibility	Outcome	13	B
ISI method	Outcome	13	A, B, C, D, E
Changes in workforce size	Outcome	12	C
IS employee morale	Outcome	11	C
User training and support	Outcome	10	C
Organizational M&A planning	Outcome	10	A
M&A motivation	Decision	10	A, B
IT communication	Outcome	9	C
IT investment at target	Outcome	9	D
Discovery (consistency)	Outcome	8	E
Risk management	Outcome	8	E
IT flexibility	Outcome	7	D
Pre-M&A org. performance	Outcome	7	D
Collaboration dynamics	Outcome	7	C
Level of data sharing pre-M&A	Outcome	7	D
Use of external resources	Outcome	6	D
Top management support	Outcome	6	A
IT standardization	Outcome	6	D
Changes in policies and procedures	Outcome	6	C
Decreases in IS staff compensation	Outcome	6	C
IT leadership in integration project	Outcome	6	C
Political considerations	Outcome	6	C
System size/complexity	Outcome	6	Not assigned
EA capability	Outcome	6	D
Time pressure	Outcome	5	E
ISI proactivity (versus reactive)	Outcome	5	E
IS configuration fit	Outcome	5	B
Communication of M&A activities to IS	Outcome	5	C
Quality of ISI planning	Outcome	5	A
Time pressure	Decision	5	E
Power and politics	Decision	5	C
Organizational integration objectives	Decision	5	A, B
ISI objectives	Decision	5	B
Integration alignment	Outcome	5	B

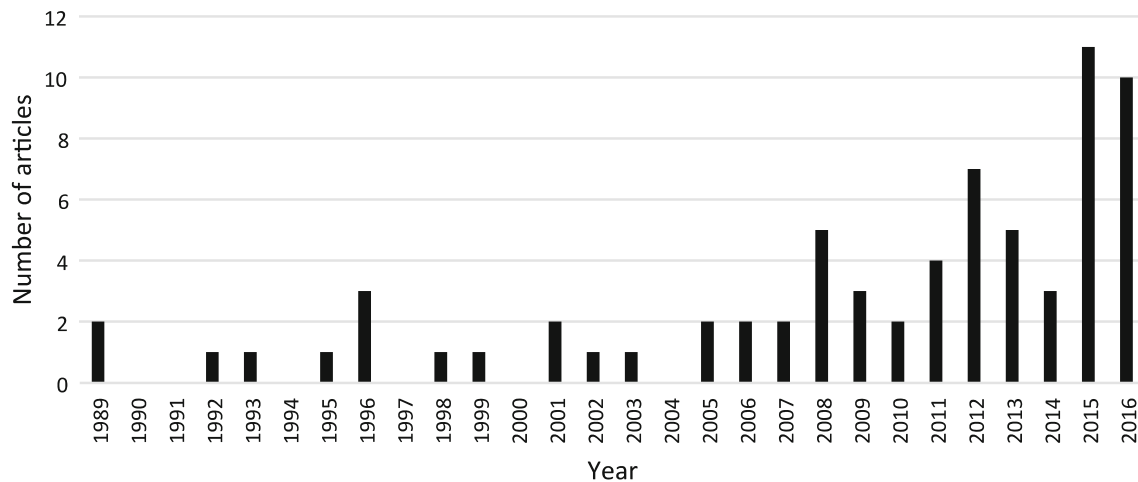


Figure 2 Temporal distribution of articles.

this question, two criteria were imposed on the search for the themes. One is that the themes collectively span the research domain, where span is defined as including all, or nearly all, of the robust relationships. The other is that the themes are independent of each other. Specifically, few relationships are included in more than one theme.

We began the search by identifying the most frequently studied robust relationship. This is the impact of IS–business collaboration in planning on ISI outcomes. This has been studied 14 times (see Table 3). We assigned this relationship to a theme initially labelled as Theme A. Then, analysing the research in which this relationship is investigated, we assigned the relationships among those variables and ISI to Theme A.

Next, we identified the second most frequently studied robust relationship not included in Theme A. This is between application and IT compatibility and ISI outcomes. We assigned this relationship to Theme B and investigated its relationships to variables in other robust relationships. Continuing this process identified five themes A–E that satisfy the first criterion of spanning the space defined by the robust relationships.

With respect to the second criterion, there is a low degree of overlap among three of the five themes and between those themes and the other two themes. However, there is a high overlap between the other two themes. We discuss the overlaps below when we present a brief overview of the themes after describing and modelling each theme.

The relationships

To understand what we know, it is frequently helpful to reflect on where we have come from. So, before identifying and describing the robust relationships in the ISI literature, we briefly inspect the time line of the research on ISI. We then present the findings from step one in the aggregation process: the robust relationships in the ISI literature.

The time line 1989–2016

Figure 2 presents the temporal distribution of the articles in the review sample. During the two first decades, the pace of publication was slow. Seventy-one percent of all articles are

published since 2008 and more than 50% since 2012. If this trend continues, the literature would be more than double in less than five years.

The first decade of research (1989–1999) is explorative. Frequently, the research does not distinguish between different types of M&As and lacks an explicit theoretical framing. An exception is Johnston and Yetton (1996), who adopt an alignment framework. Only two findings are carried forward to research in the next decade. One is the conclusion that the critical role of IS is to realize IT-dependent business benefits. The other is that ISI methods can be partitioned under four headings: absorption, co-existence, best-of-breed and renewal.

Comparing the second decade (2000–2009) with the first decade of research, the style is more explanatory and relies more on formal theoretical frameworks. For example, Brunetto (2006) draws on a contingency perspective, Wijnhoven *et al.* (2006) and Mehta and Hirschheim (2007) employ a framing based on alignment theory, and Alaranta and Henningson (2008) adopt a strategic planning perspective.

As mentioned earlier only one of the authors who published on ISI during the first decade ever published on the topic again. This may have contributed to the fragmentation in the literature. During the second decade, authors generally refer to the first decade of research to motivate the focus on ISI as an enabler of M&A benefits. However, when doing this, they do not draw on the constructs and findings from the previous decade. The exception, as also noted above, is the continued use of the four ISI methods.

In the third decade (2010 and onward), research increasingly distinguishes between different types of M&A transactions. For example, Seddon *et al.* (2010) explicitly focus on the merger of equals. Smaller acquisitions by serial acquirers are the explicit focus in papers by Henningson and colleagues (Henningson and Yetton, 2011; Henningson, 2015; Henningson and Kettinger, 2016); Du (2015) analyses horizontal acquisitions.

Other researchers highlight different aspects of the ISI challenge, including, for example, merging IS departments (Alaranta and Martela, 2012), and problems with vendor–acquirer collaboration in acquisitions that are also

divestments (Böhm *et al.*, 2011). Generally, research in the third decade, compared with previous years, is empirically and methodologically more sophisticated, reporting a higher frequency of significant robust research findings (e.g., Tanriverdi and Uysal, 2011, 2015).

Over the three decades, research displays pluralism in theoretical framings and methodological approaches (see 'Appendix B'). Eighteen different theoretical perspectives are adopted in the 70 articles. Of these, alignment theory and the resource-based view of the firm are the most frequently adopted theoretical frameworks. They are also the dominant analytical frameworks adopted in two of the five themes discussed below. Critically, many articles do not employ an explicit theoretical framework.

Methodological approaches include single and multiple case studies, expert panels, surveys, database analysis, design research and focus groups. Fifty-six articles are qualitative, eleven are quantitative, and three combine qualitative and quantitative analyses. The relative use of qualitative and quantitative data has been stable over the three decades.

Relationships

Figure 3 presents all relationships in the IS M&A literature that are corroborated at least five times. The data are reported in 'Appendix D' to allow others to conduct analyses using different decision rules.

Independent variables affecting ISI decisions

Four broad categories – the M&A context, ISI design, ISI capabilities and external environment – include independent variables that are examined at least five times and report consistent results for their effect on ISI decisions (see 'Appendix D').

M&A context Within this category, the three variables merger motivation, organizational integration objectives, and power and politics are found to affect the choice of integration method.

There is general consensus about how M&A motivation influences ISI methods. In all ten studies that this variable has been investigated, M&A motivation is found to affect the choice of ISI methods. For example, Yetton *et al.* (2013) report that Danisco used an expansion integration method to realize economies of scale and an extension method to realize economies of scope. Similarly, after reviewing the answers from an expert panel, Myers (2008) models 'M&A Objectives and Business Strategy' as a critical factor affecting the ISI decision. In addition, Gregory *et al.* (2012) argue that, at times, M&A motivations are paradoxical and that the parties involved develop decision-making strategies that balance the tensions between conflicting objectives.

The ISI method is also contingent on the organizational structure that the merger companies intend to implement (Wijnhoven *et al.*, 2006). For example, a preservation approach is linked to an IT co-existence integration method (Henningson and Carlsson, 2011). Similarly, Gorla and Pang (2001) find that an absorption approach to organizational integration is closely linked to an ISI method based on the redeployment of one organization's IS to the other.

The variable power and politics shows how factors other than efficiency and effectiveness influence the ISI method. The decision on how to integrate IS effectively becomes the

decision on which business processes to keep, and which IS department post-M&A keeps its headcount intact. In this way, the decision on the ISI method is heavily influenced by the relative organizational power within the M&A (Mehta and Hirschheim, 2007; Kovala and Skok, 2012).

ISI design Within this category, the variable of ISI objectives refers to the strategic objectives that have been assigned to the IS functions in the IT merger project. The effect of these objectives on the ISI decision has been investigated five times. For example, Wijnhoven *et al.* (2006) compare how the ISI objectives influence decision-making in different hospital mergers. In one case, the ISI objective of enabling a single organization was difficult to achieve in one step. Instead, patient administration, the function with the highest operational priority, was integrated first. This resulted in partial integration in the short term. Subsequently, the financial and managerial systems were integrated. In another case, the ISI objectives of retaining the organization's independence influenced the decision to leave any unique systems intact during the integration process.

Brunetto (2006) distinguishes between the strategic goals of synergy, value and cost rationalization in his analysis of ISI in the construction industry. He finds that these broad ISI objectives typically result in the choice of different ISI methods. Similarly, Steininger *et al.* (2016b) find that migration objectives were the key criteria when three hospitals decided on the appropriate migration scenario. The importance of ISI objectives is that they shape the compromises and priorities in ISI decisions when optimal solutions are out of reach.

ISI capabilities The use of external IT resources, commonly sourced as consultants, influences ISI decision-making. Henningson and Ørngaard (2016) identify four different roles for consultants in ISI projects: muscle, expertise, craft and brain. In the fourth role, brain, the merging companies rely extensively on external resources to actively design the ISI method. The uses of external resources in this capacity range from complete reliance for all ISI decisions to active avoidance of giving away decision authority.

Wynne (2016) reports an alternative strategy in which the focal organization hired managers with substantial M&A experience to guide them in ISI decisions. Seddon *et al.* (2010, p. 1087) explain that, while this strategy might be relevant to retaining knowledge after the ISI project, this use of external resources can still be challenged by the fact that 'many key decisions about people, systems, technologies, and their locations, remain both complex and highly situationally dependent.'

External environment Time pressure is an independent variable that influences the ISI decision. Five studies highlight its importance for the ISI decision. Time pressure comes partly from the market, which expects merger synergies to be realized within a short time frame. For example, Mehta and Hirschheim (2007) explain how synergy promises have a time component and that shareholders expect to see rapid value creation. Similarly, Robertson and Powell (2001) explain how the targets set when 'selling' the merger to shareholders and to the market become a constraint on IS decision-making. Along similar lines, Holm-Larsen (2005) explains how the long-term ideal option of building a new IT platform could not meet the time expectations.

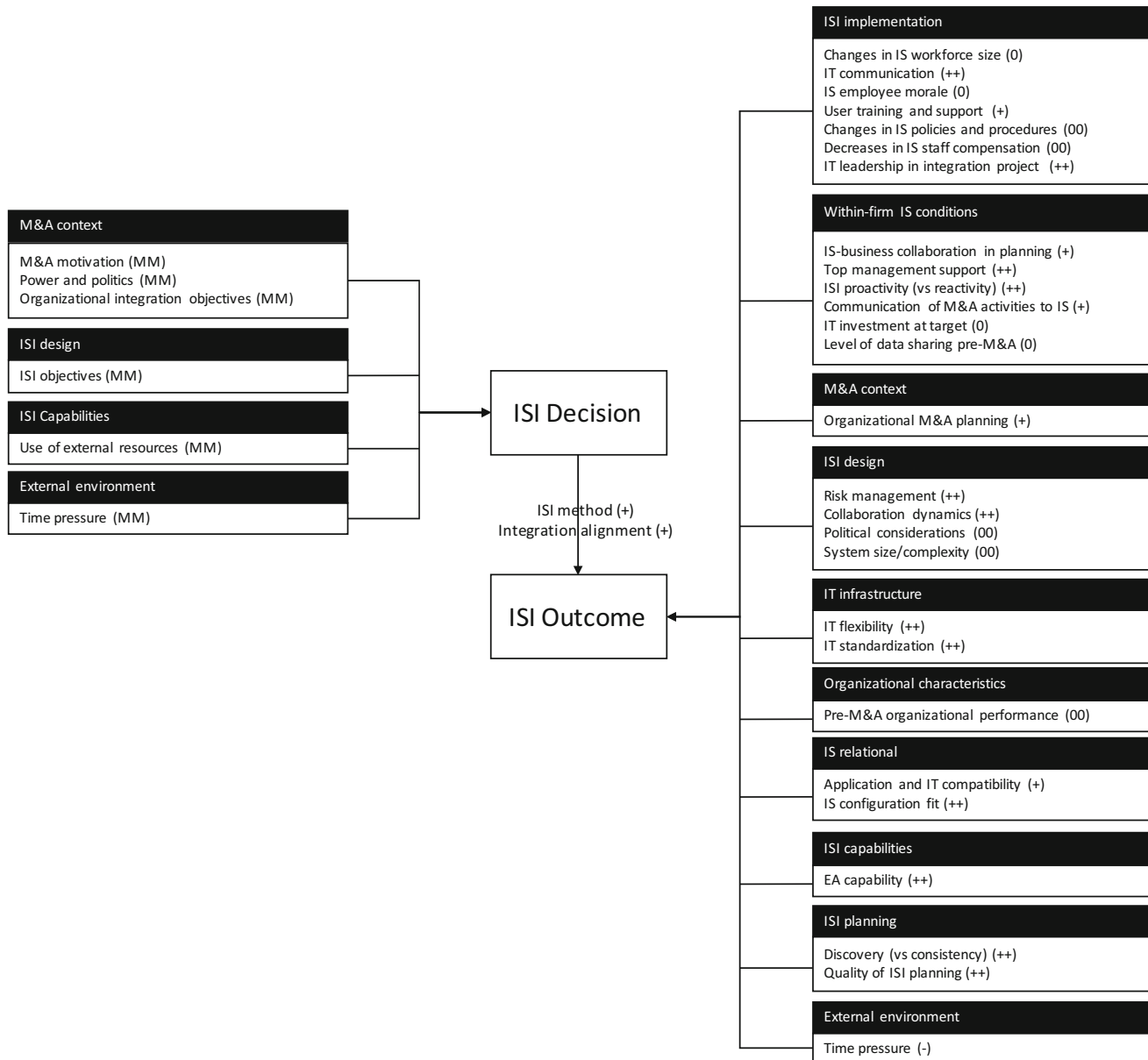


Figure 3 Robust research findings.

Time pressures also come from legal and regulatory authorities. Johnston and Yetton (1996) report that, within a bank merger, pressure from financial authorities demanding joint reporting and risk governance after the legal merger was in place contributed to the bank abandoning plans for a best-of-breed integration method. Because of time pressures, organizations may choose interim integration methods that meet market and legal demands, keeping long-term roadmaps of more radical redesigns that unlock the full potential of mergers.

Independent variables and the ISI outcome

Eleven broad categories – ISI implementation, within-firm IS conditions, M&A context, ISI design, IT infrastructure, organizational characteristics, IS relational, ISI decision, ISI capabilities,

ISI planning and external environment – include independent variables that are examined at least five times to generate consistent significant findings ('Appendix D').

ISI implementation As shown in 'Appendix D,' of the 37 variables in this category that are reported to affect ISI outcomes, only seven are investigated at least five times with consistent results. Four of these, changes in IS workforce size, IS employee morale, changes in IS policies and procedures, and decreases in IS staff compensation, have no significant effect on ISI outcomes. All four variables address issues during IS implementation that affect individual IS employees. These variables have commonly been measured through survey instruments (Stylianou et al., 1996; Robbins and Stylianou, 1999; Morsell et al., 2009). As a result, we lack practical examples of why these measures do not affect ISI outcomes.

When these variables are found to have an effect, it has been on proxy measures such as IS employees' satisfaction with the integrated system. However, there are no significant effects on the value creation measures or the avoidance of M&A problems. One possibility is that these findings show that IS staff contribute frequently to the goals of the M&A despite being demoralized. The extent to which the demoralization of staff affects long-term organizational performance has not been measured in the studies investigating these variables.

In contrast, both the extent and qualities of IT communication, and IT leadership in integration projects are found to positively affect ISI outcomes. For example, Brown *et al.* (2003, p. 24) advise: 'Use rich communications media to read emotions and recognize successes at every opportunity because a merger is an emotional event: you cannot communicate too much.' Brown *et al.* also find that the establishment of clear leadership for the ISI project is critical because it addresses difficult decisions quickly and drives the integration forward. Corroborating the importance of leadership, Alaranta and Martela (2012) and Kim *et al.* (2005) report that insufficient and inadequate leadership has negative effects on ISI outcomes.

Finally, user training and support have been investigated both quantitatively (Robbins and Stylianou, 1999; Morsell *et al.*, 2009) and qualitatively (Kim *et al.*, 2005; Alaranta and Kautz, 2012). The findings are consistent: Better user training has a positive effect on ISI outcomes. These findings are consistent with the findings on related variables, including the involvement of users in ISI decision (Robbins and Stylianou, 1999), the effect of user resistance (Alaranta and Kautz, 2012) and the existence of strong habits and practices (Vieru *et al.*, 2016).

In general, we conclude that the factors associated with how ISI is implemented affect ISI outcomes and, specifically, that extensive communication, strong leadership and adequate resourcing for user training and support, have a positive effect on ISI outcomes. However, the explanation for which factors influence which outcomes is in its formative stage.

Within-firm IS conditions: Six variables measuring within-firm conditions have been investigated at least five times. Four have significant positive effects on ISI outcomes: IS-business collaboration in planning, top management support, ISI proactivity and communication of M&A activities to IS personnel, are positively correlated with ISI outcomes. Although these variables emphasize slightly different aspects of the conditions for successful ISI, they all show that a positive perception of the IS organization, early inclusion in M&A activities and support throughout the ISI project, have positive effects on ISI outcomes.

As Brown *et al.* (2003) conclude: 'Don't underestimate the value of prior IT-business relationships for project success.' Similarly, LeFave *et al.* (2008, p. 175) write: 'A lack of IT credibility within former Sprint business functions' affected the plans for the merger. Yetton *et al.* (2013, p. 29) report: 'A prerequisite for the CIO and IT management team to act efficiently and effectively in the ISI of Genencor was the confidence built by the IT team during the years preceding the acquisition. IT had shown that, instead of being a problem, it had become a strategic resource to implement the Danisco growth-by-acquisition strategy.'

So, the perception of IT, the involvement of IT in the early phases of the merger and support throughout the process, are interlinked. When a constructive IT-business relationship exists, it allows the IS organization to hit the ground running at the time of the M&A announcement (Yetton *et al.*, 2013), reduce cost (Brown *et al.*, 2003), shape the ISI to satisfy the critical business needs (Stylianou *et al.*, 1996) and better position the IS organization to support the post-M&A combined businesses (Brown *et al.*, 2003). When such a relationship does not exist, it leads to the exclusion of IT executives in M&A planning (Alaranta and Kautz, 2012; Al Suliman, 2015), a view that IT will just make things happen (Mehta and Hirschheim, 2007), top management steering of ISI activities, including vendor selection (Alaranta and Kautz, 2012), and negative ISI outcomes (Stylianou *et al.*, 1996; Robbins and Stylianou, 1999; Morsell *et al.*, 2009).

Two variables, IT investment at the acquisition target and level of data sharing pre-M&A, have no significant effect on ISI outcomes. Tafti (2009) finds that, while IT investments in the acquirer have a significant effect on ISI outcome, there is no effect for investments in the target. The author reflects on three possible explanations for this. First, acquiring firms are not leveraging or integrating target firms' IT capabilities to the extent that we might expect. Second, acquiring firms do not adopt the 'best-of-breed' ISI method that preserves unique IS capabilities in the target. Third, the IT infrastructure and capabilities of the target firm are phased out in favour of the acquiring firm's IT infrastructure. All three explanations are examples of trade-offs and suboptimal decision-making during the ISI process.

Finally, the level of data sharing in the organizations pre-M&A (Robbins and Stylianou, 1999) does not have a significant effect on ISI outcomes. While Stylianou *et al.* (1996) report that there is a significant effect on the IS department's own assessment of ISI success, data sharing does not have a significant effect on users' perception, the exploitation of M&A opportunities or the avoidance of M&A problems.

M&A context The M&A context, as a category of variables, is the second most researched category that influences ISI decisions and outcomes. However, the research covers a wide range of variables, only one of which, organizational M&A planning, is consistently found to have a positive effect on ISI outcomes. This effect has been validated qualitatively by Kim *et al.* (2005) and quantitatively by Stylianou *et al.* (1996), Robbins and Stylianou (1999) and Morsell *et al.* (2009). High-quality planning creates a foundation for the ISI project, while low-quality M&A planning has a negative spillover effect on ISI project performance.

Given the fragmented research, we can say that the M&A context is critical for ISI project outcomes. However, there is limited knowledge about which specific attributes of the context are most relevant. Interestingly, despite the importance of the overall M&A context, there is no research on who should, or how to, reframe the M&A context to improve IT project performance.

ISI design Four variables in this category have been investigated more than five times with consistent results. Constructive collaborative dynamics and the presence of risk management are consistently found to positively affect ISI outcomes (Brown *et al.*, 2003; Henningson and Kettinger, 2016). Constructive ISI collaboration requires that the parties



to an M&A form teams to develop integration plans. Risk management accepts that there are always unpleasant surprises and organizes to act proactively. Consistently, higher values of these two variables have a positive effect on M&A ISI decision-making. Together with the previously discussed variable capturing emergence in the ISI planning process, the three variables represent complementary strategies to manage the lack of information required to design ISI at the closure of an M&A deal. Emergent IS planning processes, collaborative dynamics and a proactive orientation toward risk management, align ISI decision-making to the specific characteristics of an M&A.

Political considerations in the ISI design and consideration of system size/complexity have no overall significant effect on ISI outcomes. Stylianou *et al.* (1996) find that political considerations have a significant negative effect on the users' assessment of ISI success, but no significant effect on the IS function's own assessment, the exploitation of M&A opportunities or M&A problem avoidance. Similarly, while taking complexity into account has a significant positive effect on the users' assessment of ISI success, complexity has no significant effect on the IS function's own assessment, the exploitation of M&A opportunities or M&A problem avoidance.

Where the strategic objectives assigned to the IS function in the M&A were found to significantly impact the decisions made, a close examination of the effect of ISI design on ISI decisions suggests that the effect of design on outcomes is mediated by how it influences the trade-offs made in the choices of ISI method and degree of ISI.

IT infrastructure Two attributes of the IT infrastructure, flexibility and standardization, are consistently found to influence ISI outcomes. Higher values of these attributes have a positive effect on M&A ISI outcomes. These effects can be explained in terms of path dependency. The historical development of IS constrains how the IS can be developed. Lack of flexibility constrains options, resulting in unrealized M&A potential or difficulties in the integration project. For example, options are constrained when IT resources do not scale, limiting the realization of the potential M&A value (Tanriverdi and Uysal, 2015).

Three of the four ISI methods reuse the existing IS of the two parties to the M&A to develop the shared IS assets. This redeployment of IT resources is supported by IT infrastructure flexibility and modularity, typically delivered through a service-oriented architecture (SOA) (Benitez-Amado and Ray, 2012). Because SOA is designed to provide reusable components, IS departments do not need to reinvent the wheel, decreasing both the time to integration and development costs. Additionally, a well-designed SOA lets organizations manage multiple small integration projects with less capital and resource investment compared with the high investment and resource commitments associated with traditional solution development architectures (Henningson *et al.*, 2007).

Organizational characteristics A wide range of organizational characteristics has been studied. However, only one characteristic shows consistent results. Pre-M&A organizational performance, profit, has a positive effect on ISI outcome. Stylianou *et al.* (1996) find that acquirer revenues have a significant effect on the IS function's own assessment of ISI success, but no significant effect on the users'

assessment, the exploitation of M&A opportunities or M&A problem avoidance. Tanriverdi and Uysal (2015) report that high profitability in combination with extensive previous growth and a large IT capability gap between the involved organizations triggers a positive reaction from the stock market on deal announcement, as measured through cumulative abnormal returns (CAR). These positive effects of high profitability on ISI outcomes appear to be contingent on the presence of both extensive previous growth and a large IT capability gap. The study by Tanriverdi and Uysal (2015) shows that the effect of organizational characteristics on ISI outcomes plays out through complex systems of interacting variables.

IS relational IT compatibility between the M&A organizations is one of the earliest variables investigated in the ISI literature. Buck-Lew *et al.* (1992, p. 363) argue: 'Since company data and information technology (IT) are as much a management resource as the financial and human resources for the combined firm, the proposal is made that IT fit should be explicitly considered in analysis of corporate acquisitions.' Motivating this argument are the findings that IT compatibility has a positive effect on ISI outcomes in terms of the time and resources needed to complete integration. This finding has been corroborated ten times (Johnston and Yetton, 1996; Stylianou *et al.*, 1996).

However, the data supporting these findings were collected in the 1990s. It may be that technological innovations have made some of the 1990s hardware and IT application compatibility issues irrelevant. Since then, research has shifted to study a broader framing of IS compatibility that includes other attributes of the IS organization. This research suggests that IS configurational fit, both technical (application and IT) and organizational, has a positive effect on ISI outcomes (Brunetto, 2006).

ISI decision Considering all the variables in the category ISI decision, the only two that are linked consistently to ISI outcomes are the ISI method and the integration alignment variables. In the relationship between ISI method and ISI outcomes, each of the four integration methods is designed to deliver specific, different outcomes (Holm-Larsen, 2005; Garcia-Canal *et al.*, 2013). Effectively, the choice of the ISI method becomes the choice of which benefits are given priority in practice. For example, a co-existence strategy both enables economies of scope and increases IT infrastructure complexity.

In the relationship between ISI outcomes and integration alignment, which refers to the fit between the strategy for organizational integration and ISI, alignment is typically found to have a positive impact on ISI outcomes (Wijnhoven *et al.*, 2006; Mehta and Hirschheim, 2007). However, recently this conclusion has been challenged by evidence showing that alignment is not a prerequisite for M&A success (Baker and Niederman, 2014). *ISI capabilities*: Enterprise architecture (EA) is the only capability that is consistently linked to ISI outcomes. EA is frequently referred to as 'the organizing logic for business process and IT capabilities, reflecting the integration and standardization requirements of the firm's operating model.' (Ross *et al.*, 2006, p. 9). Specifically in M&As, an enterprise architecture capability contributes to ISI processes in pre-M&A preparation, partner selection, merger integration and post-integration management (Toppenberg *et al.*, 2015). EA enables M&A organizations to manage the

specific M&A objectives without losing track of the potential long-term organizational performance effect of induced complexity and accumulated inefficiencies over a series of M&As. No other ISI capability has been consistently linked to M&A performance. While many authors agree that ISI capabilities are important, little agreement exists about which other capabilities are required for effective delivery of ISI in M&As.

ISI planning Discovery and quality of ISI planning, two variables belonging to the category ISI planning, are found to have a positive effect on ISI outcomes. The discovery variable captures the degree of emergence in the planning process (Busquets, 2015). In an emergent planning process, instead of committing to a fixed strategy, the M&A partners adapt integration plans as the organizations discover synergistic potential. This is essential in large mergers, where not all the IT synergies can be specified in advance because the relevant information to create a detailed integration scenario is not available. Busquets (p. 178) argues that ‘while some steps that lead to synergies can be planned in advance, other essential variations are only learned and discovered during the M&A process itself, thus leading to emergent synergies.’

Morsell *et al.* (2009) argue that the quality of ISI planning has two effects on ISI outcomes. One is a direct effect on the IS function’s ability to complete the project on time and budget. The other is that planning failures spill over onto the overall M&A project, contributing negatively to the scheduling and resourcing of the M&A project. These two robust findings present a paradoxical tension and a dilemma for management. Developed plans that are followed are important, but so too is the flexibility to respond to emergent opportunities.

External environment Research on how time pressures affect ISI decisions reports that time pressure forces M&A organizations both to make decisions without having all the relevant information and to choose suboptimal solutions that can be accomplished within the given time frame (Holm-Larsen, 2005; Henningson and Kettinger, 2016). These suboptimal decisions reduce performance. Specifically, time pressure forces the parties to focus on short-term goals, ignoring the potential negative long-term effects on the integration.

Five research themes

The consolidated model presented in Figure 3 summarizes the robust empirical findings in the ISI literature. However, given the number and complexity of the relationships in Figure 3, this model does not identify any core set or sets of relationships that explain the effects of ISI on M&A performance. This is an outcome of adopting the Lacity *et al.* (2010) approach with its focus on identifying the list of robust relationships and its absence of a protocol to investigate the interdependences among the relationships.

Here, to address the challenge of fragmentation, we apply the protocol developed and described in Methodology section. This process identifies five themes that include the robust findings that define the critical, known challenges of ISI. To ground the discussion, we present a case study to illustrate the relevance of each theme.

As described in the method section, we began the search for research themes by identifying the most frequently studied robust relationship. This is the effect on ISI outcomes of IS–business collaboration in planning. This has been studied 14 times (see Table 3). We assigned this relationship to a theme initially called ‘Theme A.’ Inspecting the research in which this relationship is investigated (e.g., Main and Short, 1989; Al Suliman, 2015), we identified associations with other variables, for example, quality of ISI planning, top management support, organizational integration objectives, organizational M&A planning, ISI objectives and ISI method. We also assigned the relationships among these variables and ISI to Theme A.

The most frequently studied robust relationship that is not included in Theme A is between application and IT compatibility and ISI outcomes. We assigned this relationship to Theme B and investigated its relationships to variables in other robust relationships. Continuing this process, we identified five models A–E that satisfy the first criterion of spanning the space defined by the robust relationships. Specifically, all but one of the robust relationships are included in at least one theme. The exception is the effect on ISI outcomes of system size/complexity, which we could not fit into any theme.

In addition, relationships involving ISI method are included in each of the five themes. In each of the models of the five themes, ISI method mediates the influence of ISI decisions on ISI outcomes. For two reasons, we should have expected the overlaps involving ISI methods. One is the structure of the research literature in which ISI methods occupy a unique position as both a dependent variable and independent variable (see Figure 1). The other reason is that ISI methods is the only construct that has been the subject of research in all three decades.

In the second step of our protocol, we labelled the five themes in terms of their core constructs: M&A context, relational fit, human behavior, preconditions and time pressures. Within each of these research subdomains, we propose a research agenda to address research gaps in the theme. This research would begin to develop a set of middle-range, substantive (c.f. Boudon *et al.*, 1991; Lee, 2015) theories that are contextually contingent and managerially actionable.

Theme A: The M&A context

Taken together, the variables defining the M&A context form a thematic domain that is embedded in the M&A project (see Figure 4). For example, the outcomes of the ISI project are partially defined in terms of the M&A business objectives (Holm-Larsen, 2005; Steininger *et al.*, 2016a). It is impossible to understand how ISI success is realized without considering the M&A context. This is so pervasive in its effect on ISI success that future research should investigate how much of ISI success is contingent on the ISI project and how much on the overall M&A context.

The importance of the context is illustrated by the ForestCo case study (Jain and Ramesh, 2015). ForestCo, a Fortune 500 company in the paper and packaging industry, aggressively completed multiple acquisitions. The rapid growth was partially a consequence of industry consolidation.

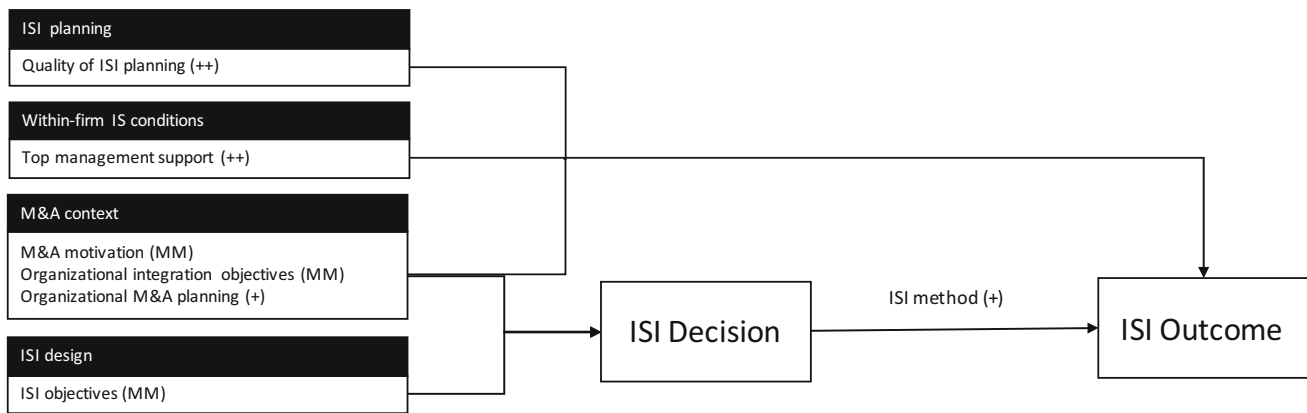


Figure 4 M&A context.

During a period of 15 years, 40% of the capacity expansions at existing firms in this industry were achieved through horizontal acquisitions.

The timing of acquisitions was not entirely in the hands of ForestCo. It had to act as companies became available in the market. Nor could ForestCo stop its growth program in order to restructure because opportunities would have been foregone. Therefore, ForestCo did not consolidate business at the corporate level as the firm expanded. Instead, ISI was resolved by retaining much of the pre-existing IS in the acquired businesses.

While this supported the rapid growth, the rapid expansion created four business divisions that were vertically structured silos. These were governed within a federated organizational structure with limited interaction among the divisions. Independence was valued over any benefits contingent on corporate control and cross-division synergies. Doing this, ForestCo failed to realize the synergies at the corporate level. To unlock the cross-division synergies, the top management team of ForestCo finally decided to develop a shared corporate IT platform.

The M&A context is a component in several explanations of ISI performance (Garcia-Canal *et al.*, 2013; Glazar-Stavnicky, 2016). However, it is rarely treated as central to explaining the dynamics between the overall M&A business context and the ISI project (Freitag *et al.*, 2010; Jain and Ramesh, 2015). To extend the explanation of ISI performance, future research should examine how M&A contexts affect the design and implementation of ISI projects.

The theoretical frameworks to do this potentially include general theories of coordination (Malone and Crowston, 1994) and task dependency (Thompson, 1967). These theoretical frameworks could provide the mechanisms for modelling differences among dependencies, the challenges that dependencies create and how the proposed coordination processes address those challenges (Grant, 1996; Medema, 1996). Recognition of these differences is fundamental to understanding how processes or integration methods are contingent on the context. Other theoretical frameworks addressing, for example, industrial characteristics could provide a starting point for analysing how the contextual influencers emerge in the first place.

Theme B: Relational fit

The most frequently studied relationship that is not a member of Theme A is the impact of application and IT compatibility on ISI outcomes (Chang *et al.*, 2014; Hsu and

Chen, 2015). These relationships comprise a subdimension of the construct IS configuration fit, which affects ISI outcomes (Buck-Lew *et al.*, 1992; Johnston and Yetton, 1996; Brunetto, 2006). The effects of these variables are frequently explained in terms of the limitations that they impose on the options for implementing ISI, restricting the choice of ISI methods (Johnston and Yetton, 1996; Gorla and Pang, 2001; Brunetto, 2006; Myers, 2008).

Incompatibilities and lack of fit lead to misalignment between business and ISI integration processes (Wijnhoven *et al.*, 2006). Cumulatively, this creates an organization in misalignment (Figure 5) (Wijnhoven *et al.*, 2006; Mehta and Hirschheim, 2007; Baker and Niederman, 2014). The basic argument is that the ISI method should be matched to the M&A strategy to create the expected business benefits (Giacomazzi *et al.*, 1997; Wijnhoven *et al.*, 2006).

This argument is illustrated by the discussion of Cisco's acquisition of VS (Toppenberg *et al.*, 2015), a provider of solutions for streaming video. At Cisco, the acquisition protocols include mechanisms to design and implement multiple work streams to integrate its business and technical capabilities with those of an acquisition. Frequently, these are complex acquisitions with multiple business benefits that require multiple work streams to retain business/IT alignment.

The VS acquisition was driven by three distinct business benefits. First, the primary motivation for acquiring VS was to rapidly extend Cisco's product offerings in video services. VS's major product was VideoGuard, which was used by 85 pay TV operators around the world. Second, the intent was to extend VS's reach to the service provider market in China and India, where VS had an established customer footprint. Third, Cisco expected that some of VS's technical capabilities could be integrated into Cisco to support its existing business operations.

Instead of applying a single integration method to realize the multiple benefits, Cisco adopted and combined three ISI methods, absorption, co-existence and best-of-breed. Cisco then integrated VS at a capability level, where each capability was matched to an integration method. This meant that in the VS acquisition, various VS business and technical capabilities were retained, running in parallel with Cisco's corresponding capabilities. Others were implemented across the Cisco organization to deliver business improvements, and

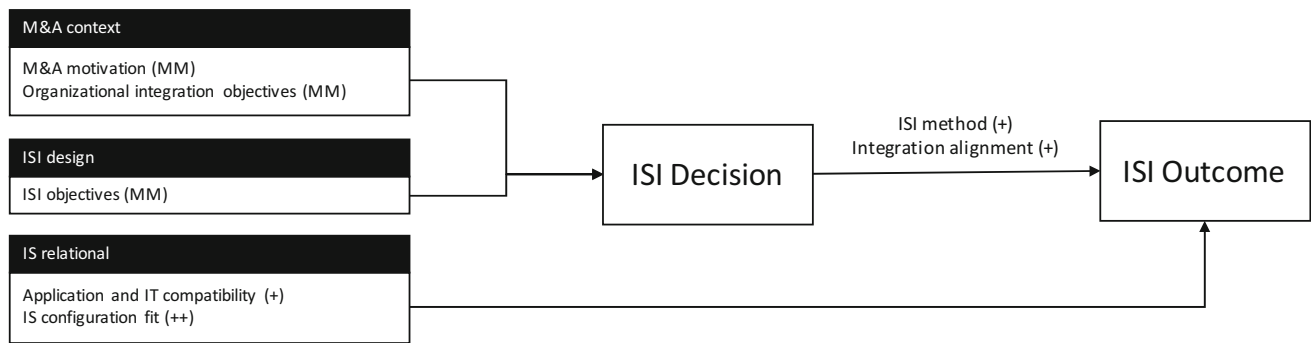


Figure 5 Relational fit.

yet others were replaced by Cisco’s pre-existing set of capabilities to implement best practice and to realize economies of scale in the VS business.

Typically, alignment theory is adopted to explain the influence of the four integration methods on ISI. For example, within this framework, research has investigated the effects on IS and business strategic alignment of the choice of ISI method (Mehta and Hirschheim, 2007), alignment as an outcome of M&As (Wijnhoven *et al.*, 2006) and whether alignment between organizational and ISI methods is necessary to create value (Johnston and Yetton, 1996; Baker and Niederman, 2014).

The findings for the effect on M&A performance of alignment are inconsistent. Johnston and Yetton (1996), Wijnhoven *et al.* (2006) and Mehta and Hirschheim (2007) conclude that alignment is critical for ISI success. Baker and Niederman (2014) challenge this assumption. They report eight cases of misalignment out of 22 successful mergers. They conclude that alignment is not a prerequisite for ISI success. Consequently, for alignment theory to be a valid theoretical framework for the explanation of ISI outcomes, future research must theoretically integrate these disparate findings. A careful examination of methods and alignment in relation to the different definitions of ISI outcomes is a potential starting point to do this.

One major knowledge gap revealed by this review is that the existing literature does not have a well-defined understanding of the relevant outcomes of M&A ISI. Above, we identify 53 outcome variables, ranging from the time and resources required to complete the ISI project (Stylianou *et al.*, 1996), to stock-market reactions and post-integration operational performance (Tanriverdi and Uysal, 2011, 2015). Most researchers focus on only one or two of these outcomes.

A few researchers attempt to conceptualize ISI success as a multi-dimensional construct. For example, Stylianou *et al.* (1996), Robbins and Stylianou (1999) and Morsell *et al.* (2009) define ISI success as a five-dimensional construct: user satisfaction, ability to exploit merger opportunities, ability to avoid merger problems, IS resource utilization and improved IS capability.

However, these composite constructs of success are difficult to investigate because a close examination of the outcome variables reveals that several of them would be almost impossible to achieve at the same time, while others appear to be closely related. For example, the two constructs,

more time and more resources, that are required to realize ISI benefits are highly interdependent. Similarly, user satisfaction and avoiding ISI problems are difficult to measure independently. To compare and contrast findings to develop theory, we need improved conceptualization of ISI outcomes.

In addition, the literature typically assumes the adoption of a single ISI method. For example, in their analysis of post-integration alignment, Baker and Niederman (2014) map a single ISI method to a single organizational integration strategy. In contrast, several of the rich case descriptions in the literature present ISI projects with mixed integration methods. For example, Cisco’s acquisition of VS, discussed briefly above, combined three integration methods (Toppenberg *et al.*, 2015). In addition, some ISI methods can be partial, for example a partial IS co-existence method (Wijnhoven *et al.*, 2006; Henningson and Kettinger, 2016). In practice, this method is effectively a combination of a co-existence and an absorption integration method.

This analysis shows that the current conceptualizations of ISI methods are subject to two limitations. One is that they do not allow for fine-grained definitions of integration methods. The other is that the choice of method is limited to the choice of a single method and not a portfolio of methods to realize multiple ISI benefits. Therefore, the improved precision of explanations based on alignment theory is contingent on conceptual development of the ISI method construct and its relationship to performance. Future research should address this issue.

Theme C: The human side

Changes in workforce size, IS employee morale and user training and support, are frequently linked to ISI outcome. Typically, these explanations of ISI outcomes emphasize the importance of communication (Stylianou *et al.*, 1996), politics (Linder, 1989; Kovala and Skok, 2012) and leadership (Kim *et al.*, 2005; Williams *et al.*, 2015). Taken together, these studies represent an explanatory theme that ISI includes an important human dimension: ISI methods affect and are affected by human behavior (Figure 6) (Linder, 1989; Kovala and Skok, 2012).

The THC case (Vieru and Rivard, 2014) illustrates this theme. In the THC case, a merger of three Canadian hospitals, the new organization tried to integrate the different units and introduce best practice through the introduction of a laboratory IS. At the outset of the merger, the three sites

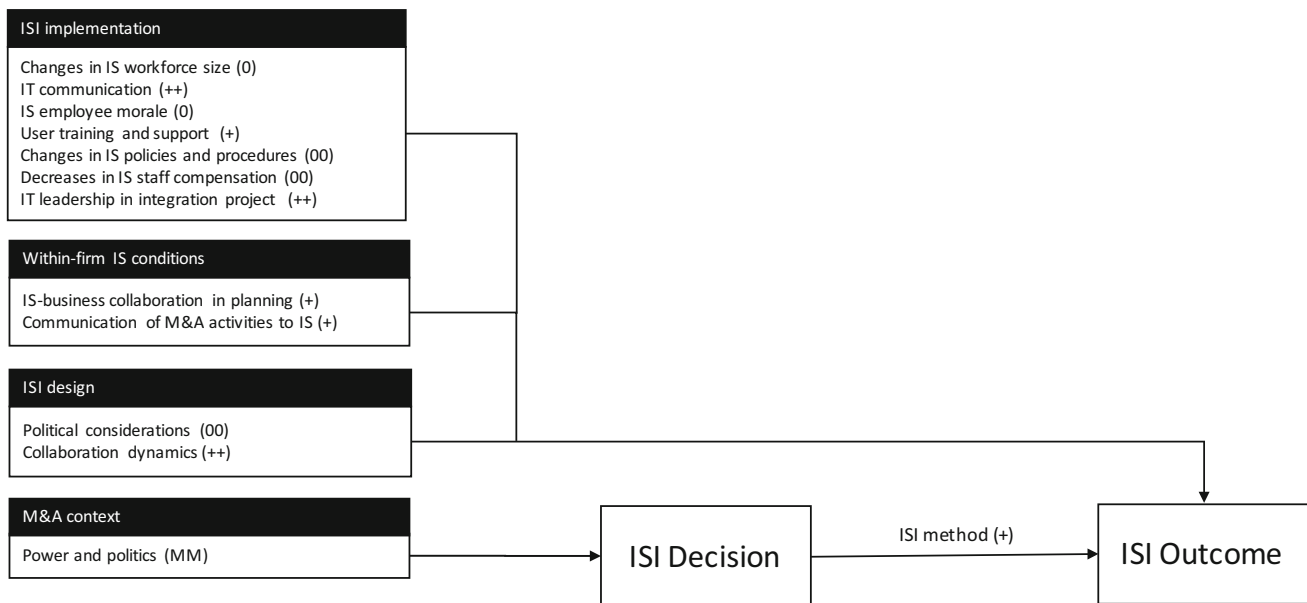


Figure 6 The human side of ISI.

that formed THC had distinct laboratory procedures. Management saw the ISI project as an opportunity to implement standardized processes throughout the merged organization, enabled by a single unified IT system.

The initial implementation design was based on a single IT system. However, it was only partly implemented because the people involved shaped the implementation to fit with their premerger working habits. Divergent organizational identities and team members' alternative interpretations of others' practices, norms and organizational symbols, prevailed during the integration phase. In general, the people involved in and subject to an ISI project do not simply enact managerial intentions. Rather, they take an active role in shaping ISI and its outcomes.

The human side of ISI design and implementation includes culture, power, change management, resistance and knowledge gaps (Linder, 1989; Alaranta and Martela, 2012; Vieru and Rivard, 2014). This human side of ISI comprises three critical dimensions: The human resources involved in realizing ISI, operating the integrated IS solutions and using the services contingent on ISI (Linder, 1989; Alaranta and Martela, 2012; Vieru and Rivard, 2014). While research has explored the scope of these three constructs, it is comparatively silent on how to resolve the associated ISI challenges (Alaranta and Martela, 2012).

So while there is limited understanding of what causes an ISI project to drift from its initial plans (Alaranta and Henningson, 2008; Vieru and Rivard, 2014) and the importance of creating a project environment with good leadership, communication and user support (Linder, 1989; Alaranta and Martela, 2012; Vieru and Rivard, 2014), the answers as to how this can be achieved are inadequate. Attending to this issue requires attention to a broader range of questions pertaining to skill sets, team construction, location of decision-making on tactics and operations, and

the potential to build and source expertise. Critically, future research on the human side of ISI should develop solutions to these challenges by studying these variables individually while also looking for overarching variables that may enable or influence all of them. Another important observation is to recognize that even projects with good leadership, communication and user support have failed. The presence of these three variables does not guarantee ISI success.

The above analysis implicitly treats the pre-M&A IS of the acquirer and of the acquisition as independent of each other and self-contained. Instead, human resource-based explanations of ISI must also address the permeability of organizational boundaries. Initially, this was limited to the growth of IT outsourcing and supply chain management (Richmond and Seidmann, 1992). Increasingly, organizations share their IS with other stakeholders, including suppliers, customers and partners that form part of larger information infrastructures that transcend organizational boundaries to form platforms on which other organizations build (Baldwin and Clark, 2000; Tiwana and Konsynski, 2010). Currently, the relevant dimensions of the composition and structure of these links with respect to M&A ISI are unknown. To understand the human side of ISI, future research should extend the scope of inquiry to include the wider set of stakeholders involved in co-designing, co-developing and co-implementing ISI.

Theme D: Preconditions for ISI

The fourth theme focuses on the preconditions to deliver successful ISI. Typically, these are described in terms of three dimensions: capabilities (Kim *et al.*, 2005; Henningson, 2015), IT infrastructure (Tafti, 2009; Benitez-Amado and Ray, 2012) and the relationship between IT and business in the combined organization (Stylianou *et al.*, 1996; Brown *et al.*, 2003). These preconditions enable (or inhibit)

organizations to choose and effectively implement the ISI methods to realize the intended M&A benefits (Yetton et al., 2013; Toppenberg et al., 2015) (Figure 7).

The Danisco case (Yetton et al., 2013) illustrates the importance of the ISI preconditions. Danisco was created in 1989 through a series of mergers that created a conglomerate in which more than 100 SBUs were managed as profit centres. In 1997, the new CEO initiated a radical strategy to transform Danisco from a regional conglomerate into a global food ingredients company, with sales to food processing companies instead of to retail consumers.

To implement this strategy, Danisco began an acquisition program targeted at food ingredient companies. The program was funded by divestments in other areas. The absence of a flexible IT infrastructure and of standardized business processes were major barriers to post-acquisition ISI. Integrating the next acquisition became an increasingly costly and slow process. Halting its growth program, Danisco rebuilt its IT platform with standardized business processes to support future acquisition ISI projects. The standardization also simplified the training of the integration team.

As a result, the cost of and time to deliver successful ISI were reduced significantly. The extreme case was Danisco's acquisition of Rhodia. This was completed on day one of the acquisition. Adopting an absorption ISI method, all Rhodia's IT resources were retired and the data transferred to the Danisco platform. The CIO acknowledged that they could not have done this without both implementing the new platform and business process standardization strategy, and training the acquisition team, to create the required preconditions to support the serial acquisition strategy.

In this theme, the dominant theoretical framing is the resource-based view of the firm (Tanriverdi and Uysal, 2011; Yetton et al., 2013) and its extensions into the capability-based and knowledge-based views (Gregory et al., 2012; Henningsson, 2015). Critically, research recognizes that it takes years, not months, to develop the IT resources to deliver successful ISI projects. However, how these resources are developed is not well understood. For example, Tanriverdi and Uysal (2011) report that cross-business IT integration capability affects ISI performance, but they do not address the question of how that capability is developed.

More research is also needed on the preconditions to deliver specific categories of ISI. This review reveals a major inconsistency between the variance in potential ISI benefits and the homogeneity in how the literature defines the relevant ISI capabilities and assets. Specifically, capabilities are not elaborated beyond the general capabilities of designing, planning and implementing, and properties of IT assets are typically restricted to issues of flexibility.

The above discussion identifies three gaps for future research. First, research should identify and link particular capabilities to specific ISI integration challenges and benefits. For example, this would include linking capabilities to specific integration methods and comparing successful ISI in single acquisitions with ISI in successful growth-by-acquisition programs.

Second, research should investigate alternative theoretical frameworks to accommodate the observed heterogeneity in the ISI challenges. For example, the capability literature has converged on theories of organizational routines in its search for the micro-foundations of capabilities (Helfat et al., 2009). However, Henningsson (2015) observes that even for frequent acquirers, ISI can rarely be routinized. Instead, the formation of ISI capabilities appears to be subject to ad hoc problem solving.

Third, research should explore technology trends that transform the organizational use of technology. Many research findings are based on studies done or data collected ten or more years ago. What is missing is an understanding of the ISI challenge within the technological context of today's world, where concepts including 'cloud computing,' 'big data' or 'BYOD' are no longer buzzwords, but credible options within an IT organization's toolkit.

For example, a concept running through many studies in the sample is that systems must be able to scale to support an absorbed company's IT records and to process the new load (Merali and McKiernan, 1993; Eckert et al., 2012). However, there is no discussion of how cloud computing may lessen the problems contingent on scaling. Where previously a lack of capacity to support the combined business was a barrier to successful ISI (Hsu and Chen, 2015), cloud computing potentially enables additional capacity to be sourced as a component in the integration project. A critical unaddressed

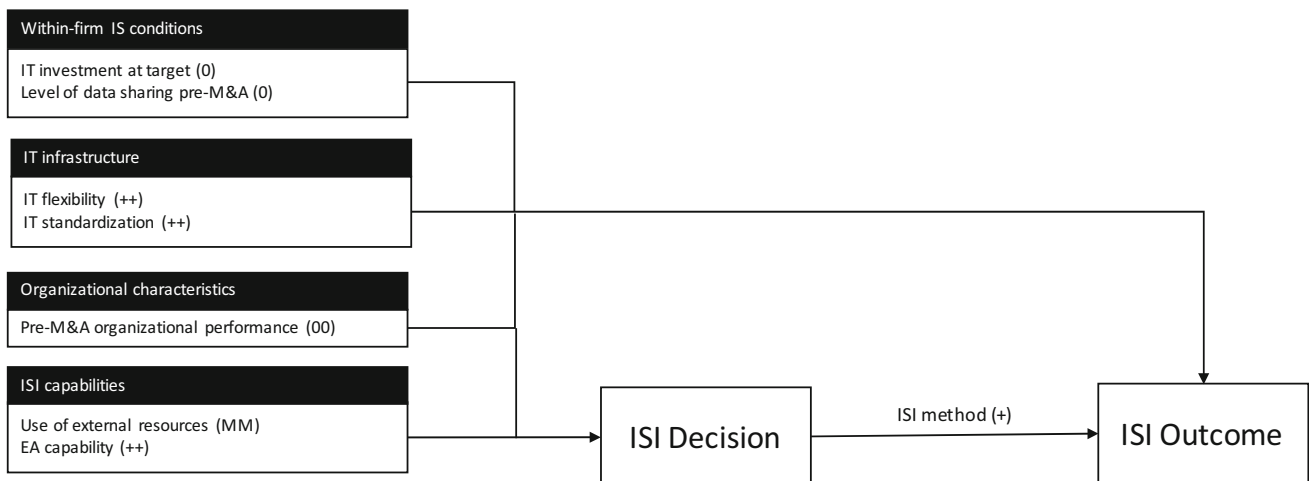


Figure 7 Preconditions for ISI.



question is: How do major changes in the provision of IT services shape the challenges of ISI and their solutions? Of course, new technologies would also introduce new challenges and limitations. For example, while the infrastructure may scale as a feature of a cloud-computing platform, perhaps the contracts do not scale so favourably.

Theme E: Time pressures

The fifth theme emphasizes the role of time pressure, which is frequently found to affect both ISI decisions and outcomes. The pressure to integrate rapidly takes several forms, including market pressure to realize the expected benefits (Mehta and Hirschheim, 2007) and legal pressure to report and govern risk (Johnston and Yetton, 1996; Mehta and Hirschheim, 2007). In Figure 8, time pressure interacts with these variables to affect the choice of ISI methods, and, hence, of ISI outcomes (Mehta and Hirschheim, 2007; Eckert *et al.*, 2012).

The Mekong-Indus merger (Mehta and Hirschheim, 2007) illustrates the effect of time pressure on merger ISI decision-making. Because ISI had in the past taken too long compared with stock-market expectations, Mekong decided to standardize the post-acquisition combined business based on the existing Mekong IS platform. Considering the external time pressure, moving to the preferred but unproven Indus platform was judged to be too much of a risk.

However, after a few years of struggling with operating on Mekong's preacquisition IS platform, the combined organization migrated to an updated platform similar to the Indus platform that had been retired during the merger project. This suggests that an option could have been to manage the ISI in two phases. In phase one, the Indus platform would have been retained. In phase two, the combined organization would have been transferred to a new Indus-type platform. In this way, while time pressures cannot be avoided, the time frame over which the various components of the ISI are achieved is a strategic IT decision.

Time is rarely included as a construct in theories of organizational behavior or strategic management. Critically, suboptimal decision-making due to time pressure has a major negative effect on ISI performance (LeFave *et al.*, 2008; Busquets, 2015). In addition, ISI decisions exhibit complexity and uncertainty, which make it difficult to identify and

evaluate all the options within a tight time frame (LeFave *et al.*, 2008; Busquets, 2015), resulting in suboptimal decisions (Johnston and Yetton, 1996).

Complexity and uncertainty have an extensive history in organizational decision-making research beginning with the behavioural theory of the firm (March and Simon, 1958; Cyert and March, 1963) and its extension into the attention-based view of the firm (Ocasio, 1997) and the organizational response literature (Dutton and Duncan, 1987; Dutton and Jackson, 1987). In the literature on managerial cognition, complexity and uncertainty are linked to theories of mental models, emotions, intuition, ideology and sense making (Kiesler and Sproull, 1982; Walsh, 1995).

Specifically, in the case of M&As, ISI is challenged to accommodate complex multi-business decisions that are frequently the subject of competing and inconsistent business objectives within a short and tight time frame. However, these aspects of ISI project are typically noted in passing, while focusing on other parts of the explanation of ISI outcomes (Johnston and Yetton, 1996; Henningson, 2015). In the M&A ISI literature, theoretical explanations that focus on the influence of time pressures are lacking.

ISI decisions are also subject to intertemporal effects. In our consolidated model, many variables occur as both independent and dependent variables, including ISI capabilities, IS-business relationships and IT infrastructure (Figure 3). For example, improvements in ISI capabilities result from learning processes across a series of acquisitions (Henningson, 2015). So, ISI performance on one M&A influences the general perception of the IS organization, which in turn affects its ability to deliver the next ISI project (Main and Short, 1989). In addition, contemporary IT infrastructures are highly path dependent. Decisions made under time pressure on one ISI may be difficult to reverse and, therefore, could have major cumulative effects beyond the individual acquisition (Yetton *et al.*, 2013).

In this way, the cumulative effects of a growth-by-acquisition program generate very different managerial challenges compared with those of a single merger or acquisition. It follows that serial acquisitions must be understood not as individual events but as components in a growth-by-acquisition program. Beyond the direct acquisition benefits, research must include learning effects that improve ISI capabilities for the next acquisition, the

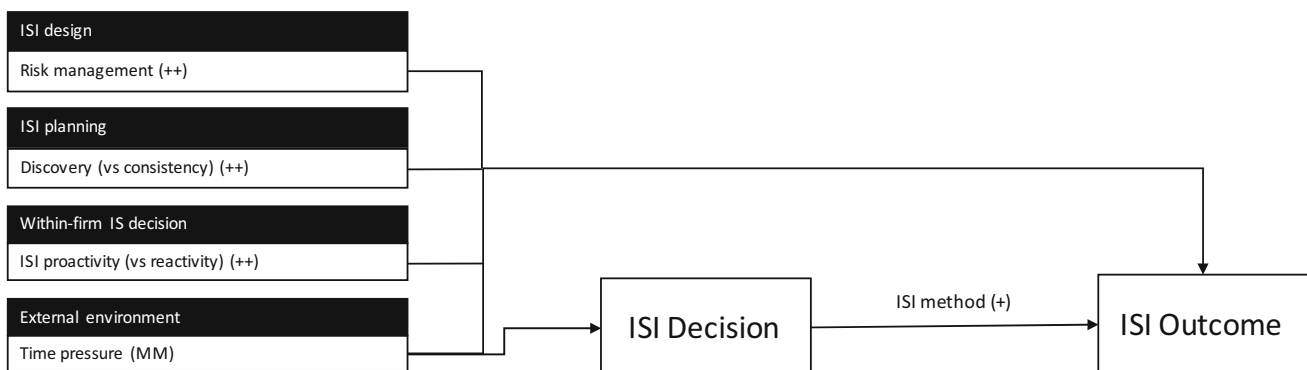


Figure 8 Time and suboptimal decision-making.

reputation trajectory of the IS organization and the technological limitations built into the IT infrastructure that inhibit future acquisition options.

Analysis of how the serial acquisition context affects ISI decisions and ISI outcomes is absent from the literature. While many of the case studies in the review sample analyse acquisitions by serial acquirers, they generally disregard the serial dimension and treat the acquisition as a discrete event (e.g., Seddon *et al.*, 2010; Busquets, 2015; Jain and Ramesh, 2015). This is a critical gap in research because 60% of all acquisitions are made by serial acquirers (Kengelbach *et al.*, 2011). While it may not be justified for organizations involved in an individual M&A to focus on the broader strategic context, doing this is critical for any organization implementing a growth-by-acquisition strategy. Future research should investigate the learning within a project, the learning between projects, and how, in combination, this learning makes an acquirer 'ready to acquire,' reducing the time pressures experienced, and, hence, the negative effects of time constraints.

Implications for research

The five themes frame the implications for research in four ways. First and foremost, the themes identify five major research subdomains in the literature on IT in M&As. By partitioning the robust relationships into five research themes or subdomains, the complexity contingent on the large number of relationships in Figure 3 is kept tractable for research within each theme. This focuses and enables the analysis of each theme.

Second, reviewing and comparing the five themes, we examine the overlaps among the themes. The intent to identify a limited number of themes that include all, or nearly all, of the relationships in Figure 3, while limiting the overlaps among the themes, has two implications for research. One is that it helps to keep the analysis within a theme tractable by limiting the requirement to explain and/or control for interdependences with relationships in other themes. The other implication is that the independence between themes enables us to investigate the theoretical status, or lack of status, within each theme.

Third, we hope that identifying the five themes will influence research in two other ways. One is to motivate the analysis of interdependences between themes at a theme, rather than at a relationship level of analysis. The other is to use what is known, the robust relationships that constitute a theme, to identify and focus on what is not known or is emerging as a new research stream and therefore potentially as a new theme.

Fourth, responding to the identified research gaps will require pluralism in methodological approaches. We note that research in the area has been dominated by qualitative case studies. While these studies continue to be relevant, increased methodological pluralism will be needed to address the knowledge gaps identified within, between and outside the emergent themes.

Formalizing the research contributions

We partition the robust findings across five themes. Each theme represents a major subdomain defined by a set of related robust findings in the M&A literature. Implicit but

not made explicit, the analysis of each theme identifies the major thematic themes and core constructs, the related theoretical frameworks, the research gaps and some potential research questions. Here, we extract and formalize those contributions to make them more accessible and potentially useful to other researchers (see Table 4).

In Table 4, we identify a set of theoretical frameworks that are potential points of departure to develop the theoretical coherence of the emergent themes. In addition, there is an opportunity to investigate the unique M&A ISI context to increase the explanatory power of the frameworks. For example, the resource-based literature is relatively silent about how resources are recognized, developed, transferred and discarded when not needed. Research in the novel M&A ISI context could provide empirical observations that would both develop and validate the theory of M&A ISI, and generate general insights into the theoretical frameworks adopted.

Overlaps among and theoretical status of the themes

Inspecting the thematic domains and core constructs in Table 4, the overlaps can be partitioned into two sets. One set consists of the overlap common to the models of preconditions, relational fit and the ISI context. The other set of overlaps is between the relational fit and the ISI context themes. The differences between the theoretically based and the empirically based themes in Table 4 motivated the second issue reviewed here: the theoretical status of each theme.

Overlaps among the themes

The first overlap above involves the models of preconditions, relational fit and the ISI context. All three themes include the effects of ISI objectives on the ISI decision. On reflection, we would assign ISI objectives to be a component in the ISI decision construct. ISI objectives determine the ISI methods chosen to deliver the ISI outcomes. This change in classification would remove the interdependence between the preconditions theme and the other two themes.

The second set of overlaps is between the relational fit and the ISI context themes. The former, excluding ISI objectives, includes the effects of organizational integration objectives, M&A motivation, application and IT compatibility and IT configuration, on the ISI decision. The latter, ISI context, includes the effects of quality of ISI plan, top management support, M&A motivation, organization integration objectives and organizational M&A plans, on the ISI decision.

Two responses to the overlaps were considered. One was simply to combine the themes, reducing the number of themes to four independent themes. Empirically, this would have been a simple solution to satisfy the second criterion, minimizing the overlaps among the themes. The other was to retain them as different themes in which the common variables played different roles in M&A ISI. Inspecting the two models, the former option was rejected and the latter was accepted.

For example, we concluded above that the relationships comprising the relational fit theme constitute a subdimension of the construct IS configuration that affects ISI outcomes (Buck-Lew *et al.*, 1992; Johnston and Yetton, 1996; Brunetto, 2006). In which case, drawing on developments in that theoretical domain could help develop the



Table 4 Research agendas within each theme.

<i>Thematic domain and core constructs</i>	<i>Related theoretical frameworks</i>	<i>Research gaps</i>	<i>Potential research questions</i>
<i>The M&A context</i>	Coordination theory Task-dependency theory	Conceptualizations of dynamic interactions between organizational integration and ISI Unexplored M&A contexts, including innovation-driven mergers in the hi-tech industries The value creating mechanisms of M&As in digital industries Challenges in transitioning from an established M&A practice to an innovation-oriented practice	What is the interface between the M&A project and the ISI project? How can the interdependencies between the M&A project and ISI project be managed? How can acquirers manage incremental ISI in highly uncertain technology acquisitions? What are the appropriate ISI methods to integrate disruptive business models? What are the implications of M&As for digital ecosystems?
<i>Relational fit</i>	Alignment theory Configuration theory	Inconsistencies in the importance of alignment A coherent framework for understanding M&A ISI outcomes Adopting a portfolio of ISI methods	How does alignment of ISI methods and merger strategies affect M&A outcomes? What are the relationships between different outcomes? To what extent do differences in outcome variables explain inconsistencies in extant research? What are the explanatory implications of relaxing the assumption of a single ISI method? How can a more granular perspective of ISI methods be conceptualized?
<i>The human side of ISI</i>	Power and politics Change management Resistance Human resource management	Resolutions to identified human challenges The constituents of a good project environment The permeability of organizational boundaries and the M&A ISI project	How to manage ISI in M&As with valuable IT-enabled capabilities? What are the solutions to power, politics and resistance challenges? Which actors, excluding the merging organization, affect M&A ISI and how can the extended organization be managed in the merger ISI context?
Changes in IS workforce size IT communication IS employee morale User training and support Changes in IS policies and procedures Decreases in IS staff compensation IT leadership in integration project IS-business collaboration in planning Communication of M&A activities to IS Political considerations Collaboration dynamics Power and politics ISI method			

Table 4 Continued

Thematic domain and core constructs	Related theoretical frameworks	Research gaps	Potential research questions
<p><i>Preconditions for delivering ISI</i> IT investment in the target Level of data sharing pre-M&A IT flexibility IT standardization ISI objectives Use of external resources EA capability ISI method</p>	<p>Resource-based view Capability-based view Knowledge-based view</p>	<p>The building of preconditions for M&A Interaction between M&A ISI learning processes and other organizational events Specific ISI capabilities for specific M&A subclasses Conceptualization of ISI capabilities accommodating variation in challenges The impact of emerging technology management practices</p>	<p>What are the origins of ISI capabilities and how do organizations develop them? Which ISI capabilities are required for specific categories of mergers? How can ISI capabilities be conceptualized to cater for the heterogeneity of ISI challenges? In which ways do trends such as cloud computing and software-as-a-service affect ISI in M&As?</p>
<p><i>Time and suboptimal decision-making</i> Risk management Discovery ISI proactivity Time pressure ISI method</p>	<p>Organizational response Attention-based view Path-dependency theory Temporal scales</p>	<p>The impact of time pressure on ISI decision-making in M&A Intertemporal effects in serial acquirers The challenges and management of acquisition programs and acquisition-based growth strategies Antecedents of ISI capabilities</p>	<p>How are ISI decisions affected by time pressure? To what extent are M&A objectives mutually exclusive or conflicting in their effects on ISI? How do trade-offs generate suboptimal outcomes? Which are the critical implications of the intertemporal nature of ISI decisions in M&As? What are the critical cumulative effects in a series of M&As?</p>



heme in future research. For example, recent developments include a model to explain business and IT strategic alignment in multi-business organizations (MBOs) (Reynolds and Yetton, 2015).

Reynolds and Yetton (2015) explain how incompatibilities between business and IT strategies lead to functional and structural misalignment within and between strategic business units (SBUs) in MBOs. Their model could be extended to explain how different integration methods would affect ISI at the SBU level of analysis. In addition, Reynolds and Yetton explain how dynamic misalignment is created over time within the IT investment cycle. So, their model could also be extended to explain how dynamic misalignment is created in a growth-by-acquisition program. In both suggestions, the basic argument is that the ISI method should be matched to the M&A strategy to create the expected business benefits (Giacomazzi *et al.*, 1997; Wijnhoven *et al.*, 2006).

In contrast, we conclude above that the relationships in the ISI context theme form a thematic domain that is embedded in the M&A project in which, for example, the outcomes of the ISI project are contingent on the M&A business objectives (Holm-Larsen, 2005; Steininger *et al.*, 2016a). Compared with the relationships that constitute the relational fit theme, which share a common theoretical analytical framework, the relationships that constitute the ISI context theme are embedded in what is essentially an empirical, practice-based rather than theory-driven research domain. Therefore, there is no theoretical or empirical reason for merging the relational fit and the ISI context themes, which critically would have increased the number of relationships and, in turn, the analytical complexity within the merged single theme.

Theoretical status of the themes

Inspecting the five themes, the ISI context theme is essentially an empirical practice-led theory, even though in Table 4, we suggest that co-ordination theory and task-dependency theory are potentially related theories. As discussed above, the relational fit theme is a theory-led theme based on alignment theory. The preconditions theme is a theory-led theme based on the resource and related theories. The human side theme draws on a multitude of theoretical frameworks, and the time pressures theme is an empirical practice-led theme.

For example, the time pressures on integration take various forms, including market pressure (Johnston and Yetton, 1996; Mehta and Hirschheim, 2007). Similar to the ISI context theme, the time pressure theme is an empirically based theme. However, unlike the ISI context theme, the time pressure theme is not embedded in an IT practice-based domain. Instead, it includes all the external pressures on an M&A. As such, the reference literature is the general M&A literature.

The resource-based view of the firm (Tanriverdi and Uysal, 2011; Yetton *et al.*, 2013) and its extensions into the capability-based and knowledge-based views (Gregory *et al.*, 2012; Henningson, 2015) is the dominant theoretical framing for the preconditions theme. So, similar to the

relational fit theme, future research on this theme should draw on recent theory developments in the resource-based reference literature.

Finally, the human side of ISI design and implementation includes culture, power, change management, resistance and knowledge gaps (Linder, 1989; Alaranta and Martela, 2012; Vieru and Rivard, 2014). This is a wide range of reference literature. However, we speculate that this literature can be partitioned under three headings: The human resources involved in realizing ISI, operating the integrated IS solutions and using the services contingent on ISI (Linder, 1989; Alaranta and Martela, 2012; Vieru and Rivard, 2014). To make future research on this theme tractable, it should draw on only one of these three large reference literatures to frame the research.

Gaps within and between themes

The third issue discussed here concerns gaps within themes and the relationships between themes. An example of the former would be to acknowledge that the unit of analysis in ISI research is typically a single merger or acquisition. However, in practice, many acquisitions are elements in a growth-by-acquisition strategy (Toppenberg *et al.*, 2015) and, therefore, we know little about the dynamics of performance in growth-by-acquisition strategies. An example of the latter would be combining the preconditions for ISI theme with the time pressures theme to focus the analysis on how an organization could become 'ready to acquire' or 'ready to be acquired.'

Gaps within themes

Here, we present two examples of research in the gaps within themes. First, adopting a single M&A as the unit of analysis excludes the analysis of growth-by-acquisition strategies, which account for 60% of M&As (Kengelbach *et al.*, 2011), and the development of capabilities over multiple acquisitions. For example, Henningson (2015) concludes that developing the critical ISI capabilities is contingent on the experience of and the learning from a series of heterogeneous acquisition projects. He does acknowledge, however, that the learning trajectory may be influenced by other related experiences, including, for example, implementing a major enterprise system.

While serial acquirers learn from repeat acquisitions, research should document this knowledge to make it available to novice acquirers. This would enable them to avoid the trial-and-error learning mistakes that their serial acquiring colleagues have made. Research has already begun to investigate this form of learning (Henningson, 2015) but without examining the implications for novice acquirers.

The flipside to this would be to understand the challenges novice acquirers face as they embark on their earliest acquisitions, and how to identify and avoid unexpected pitfalls. Wynne (2016) starts to explore the learning processes of a novice acquirer. Given the prevalence of novice acquirers in the M&A market, it is critical that research enables the transfer of learning from experienced to novice serial acquirers.

Second, the importance of the M&A context raises the question of whether ISI has been investigated in all of the relevant M&A contexts. While research has investigated ISI in a number of industries (see 'Appendix B'), there is limited formal analysis of whether ISI is a standard process for all, or is contingent on the industry, company or product line? For example, Toppenberg (2015) comments that many of the industries studied are traditional 'low-tech' industries. Studies of 'hi-tech' industries are not well represented in the extant literature. The exceptions include studies of manufacturers of hi-tech goods (Chang *et al.*, 2014), telecoms (Alaranta and Henningson, 2008; LeFave *et al.*, 2008) and IT service providers (Alaranta and Martela, 2012). However, even in these studies, the 'high-tech' nature of the industry is not treated as relevant and, certainly, not as central to the analysis.

The lack of studies of hi-tech companies is relevant for two reasons. One is that hi-tech industries account for about 20% of all M&A activity, including many of the largest M&As (Toppenberg, 2015). The other reason is that hi-tech industry dynamics differ from those in traditional industries in ways that influence ISI performance (Henningson *et al.*, 2016). For example, in hi-tech M&As, the acquisitions are frequently start-ups with emergent, potentially disruptive business models. These are frequently difficult to accommodate within the acquirer's existing IS landscape.

M&As in digital industries are another example of the salience of the context. These M&As are different from acquisitions in 'non-digital' hi-tech industries, such as pharmaceuticals and health science. Many digital firms, including Google, Apple, Microsoft and Facebook, complete multiple acquisitions each year. This digital dimension is absent from the general research on M&As (c.f. Graebner *et al.*, 2010). Yet, we know that digital industries are characterized by distinct business dynamics, including network effects, platform-based business models and cooperation within business ecosystems (Henningson *et al.*, 2016). The mechanisms of value creation and the interplay with the digital technologies enabling them should be the topic of future studies of ISI performance.

Analysis between themes

The research in the time pressures theme focuses on the dysfunctional responses to time pressures (Mehta and Hirschheim, 2007). Within this theme, the literature is limited to examining the poor options available to manage this threat to ISI performance. Instead, consider how combining the time pressures theme with the preconditions theme would motivate research on how improvements in the capabilities within the preconditions theme would reduce time pressures, rather than attempting to improve the management of those pressures within the time pressure theme.

In general, developing a high level of preconditions would make acquirers increasingly 'ready to acquire' and reduce the level of time pressure on acquisition teams. This research could be extended to enable organizations that are divesting a business unit to make that unit 'ready to be acquired.' Similarly, improving our understanding of the relational fit theme could reduce IT implementation project specification errors. This would enhance IT project performance within the ISI context theme.

In addition, consider how combining the time pressures theme with the ISI context theme could reduce the management challenges in the time pressures theme. For example, in a subsequent acquisition, the bank in Johnston and Yetton (1996) integrated the retail bank business of its next acquisition target using an absorption method but ring-fenced the wealth business until the acquirer's next platform upgrade because its current platform could not host the acquired wealth business.

This is similar in form to the two-phase solution that we propose above to the challenge faced by Mekong in its acquisition of Indus. This approach to ISI simply requires that the assumption in which ISI occurs at a single point in time is relaxed, at least for the integration of the IT platforms. Future research should explore the interdependencies among the five themes to identify under-researched effects on ISI.

Methodological considerations

In the general literature on M&As, studies based on quantitative data (surveys and empirical studies) outnumber the studies based on qualitative data (single and multiple case studies) by a factor of 20 (Bengtsson and Larsson, 2012). In the extant research on ISI issues in M&A, only 14 of 70 identified publications are based on quantitative data (see 'Appendix A').

The primarily case-based research approach employed has been instrumental in the exploratory theory development that has taken place. Certainly, further case-based exploration will continue to be important to expand the current knowledge base to additional actors and types of M&As, yet to be addressed from an IS perspective, for example, in expanding the study of the M&A context to digital industries (Toppenberg, 2015) or to uncover the impact of the increased adoption of cloud technologies to extend the theme on preconditions for ISI.

For the areas that are already relatively well covered, in particular the acquisition of individual business units, and the themes that have reached some degree of theoretical maturity, there is now a requirement to empirically investigate and statistically verify the theoretical propositions that have been developed. For example, a survey could provide valuable insights into the relationships between ISI capabilities and integration methods. It could reveal both positive and negative effects of different capabilities within the context of a range of different M&As.

However, because of the lack of validated constructs, this type of analysis will be expensive in terms of resources needed. We identified 53 different ways of describing the effects of ISI. However, with few exceptions (Stylianou *et al.*, 1996; Tanriverdi and Uysal, 2011, 2015), measurement constructs are not available to model and estimate these effects.

Finally, the status of the themes and their gaps calls for an additional set of qualitative studies. Specifically, these studies would adopt methodologies in which researchers are immersed in the context, and explore from the inside. The methodologies would include action research, design research and participant observation. The general research question would be: How do the people involved in ISI projects manage the tensions, complexities and uncertainties as the project unfolds?



Two examples illustrate this line of research. In one, the researcher would engage with practitioners in design research to develop tools and approaches grounded in the emergent academic understanding of ISI to address the challenges of the ISI process (Wynne, 2016). The other example could be the subject for an action research study: How is successful M&A ISI contingent on the level of digitalization?

Conclusions

To overcome the fragmentation of the research on ISI challenges and solutions in M&As, we document, organize and structure the empirical findings of 70 research articles that collectively cover three decades of research on the topic. The research question guiding the review is: *How to aggregate, organize and structure what we know about M&A ISI decisions and their outcomes?*

To answer this question, we examine the independent and dependent variables investigated in the literature and the relationships among them. We identify 195 independent variables, 53 dependent variables and 619 relationships among them. Distinguishing between categories of ISI decision and ISI outcomes as dependent variables, we identify the robust research findings reported in the literature and consolidate them in a model that presents the critical factors that consistently affect ISI decisions and ISI outcomes.

We then inspect the consolidated model to identify five themes in the explanations of ISI and its effects on performance: M&A context, relational fit, human behavior, preconditions and time pressure. For each theme, we identify the core constructs, discuss the presence, or absence, of theoretical frameworks and give an illustrative example of practice. Each of the themes highlights complementary aspects of ISI dynamics. We do not claim that these five themes are the only ones relevant for ISI research. Rather, they represent points of convergence that allow us both to structure the relationships among the robust findings and to identify critical gaps in this fragmented research domain.

Advancing the research domain in the directions suggested would develop a set of mid-range theories that are contextually contingent and managerially actionable. Given the practical relevance of the topic, this is an appropriate course of action in the short- and mid-term perspective. In the longer term, the challenge remains to integrate the diverse themes. In our view, more research needs to be done to develop individual explanatory models of the themes before it would be possible to theoretically integrate them.

We recognize that our review is subject to limitations contingent on the choice and execution of our review methodology. Three are reviewed here. First, while we have attempted to identify all relevant research that meets our criteria for inclusion and to code it correctly, we cannot guarantee that we have not made errors of omission in the former and errors of commission in the latter. However, given the large amount of data analysed, we believe that the major findings and conclusions are independent of any such errors. In addition, we have made our review method transparent to enable other researchers to replicate our analysis.

Second, the relationships in our review do not reflect the substance or magnitude of the effects. Nor do they include interactive and dynamic effects, for example, examining how changes in decisions and contextual conditions evolve during the ISI project. However, there are not enough data to conduct a structured review to do such research. In addition, just because a relation between a set of variables has not been documented, it does not mean that the relation does not exist. The lack of evidence supporting the relationship may be a factor of the industries and in which the context of ISI has been investigated, or that research has investigated variables that are easier to measure than others.

Third, Lacity *et al.*'s (2010, 2011, 2016) review methodology organizes and structures the empirical findings to report what is known. It does not provide and is not intended to provide a coherent theoretical explanation of the domain reviewed. Our intent, given the current fragmented state of the research domain, is to document what is known and develop a research database within which researchers can locate their research or on which they can draw to motivate research.

Our general conclusion from looking both backward and forward to examine the ISI research on M&As is that, despite an extensive body of literature, we have but scratched the surface of this problem domain. With the large number of relationships identified above that influence ISI decisions and outcomes, it is easy to see why ISI is reported as one of the critical problem areas inhibiting successful M&As. M&A ISI should be a major IS future research domain.

Acknowledgements

We want to thank the senior editor and the reviewers for their valuable constructive feedback during the review process. We also want to thank Joan Spiller her editorial comments on an earlier draft.

References

- Accenture (2006). Executives Report that Mergers and Acquisitions Fail to Create Adequate Value [WWW document] http://newsroom.accenture.com/article_display.cfm?article_id=4364 (accessed 10th July 2007).
- Al Suliman, M.H. (2015). In Mergers and Acquisitions-IT: Results of the Absence of CIO in Ex-ante Planning and the Absence of Key IT Staff in Ex-post Integration. The Claremont Graduate University, Unpublished PhD thesis.
- Alaranta, M. and Henningsson, S. (2007). Shaping the Post-Merger Information Systems Integration Strategy, in Proceedings of Hawaii International Conference on System Sciences (Waikoloa, USA, 2007); Chicago: IEEE Computer Society Press.
- Alaranta, M. and Henningsson, S. (2008). An Approach to Analyzing and Planning Post-Merger IS Integration: Insights from two Field Studies. *Information Systems Frontiers*, 10(3), 307–319.
- Alaranta, M. and Kautz, K. (2012). A Framework for Understanding Post-Merger Information Systems Integration. *Journal of Information Technology Theory and Application*, 13(1), 5–29.
- Alaranta, M.E. and Martela, E. (2012). Overcoming Knowledge Gaps in Postmerger Integration, in Proceedings of International Conference on Information Systems (Orlando, USA, 2012); Atlanta, USA: Association for Information Systems.
- Baker, E.W. and Niederman, F. (2014). Integrating the IS Functions After Mergers and Acquisitions: Analyzing Business-IT Alignment. *The Journal of Strategic Information Systems*, 23(2), 112–127.



- Baldwin, C. and Clark, K. (2000). *Design Rules*. Cambridge, MA.: MIT Press.
- Bengtsson, L. and Larsson, R. (2012). Researching Mergers and Acquisitions with the Case Study Method: Idiographic Understanding of Longitudinal Integration Processes, *Handbook Of Research On Mergers And Acquisitions* (Ed, Weber, Y.) Elgar Publishing.
- Benitez-Amado, J. and Ray, G. (2012). Introducing IT-enabled Business Flexibility and IT Integration in the Acquirer's M&A Performance Equation, in Proceedings of International Conference on Information Systems (Orlando, USA, 2012); Atlanta, USA: Association for Information Systems.
- Bhattacharya, P. (2016). Identifying Four Key Means of Business Value Creation using Enterprise Systems: An Empirical Study. *Journal of International Technology and Information Management*, 25(1), 19–38.
- Boell, S.K. and Cecez-Kecmanovic, D. (2015a). Debating Systematic Literature Reviews (SLR) and Their Ramifications for IS: A Rejoinder to Mike Chiasson, Briony Oates, Ulrike Schultze, and Richard Watson. *Journal of Information Technology*, 30(2), 188–193.
- Boell, S.K. and Cecez-Kecmanovic, D. (2015b). On Being 'Systematic' in Literature Reviews in IS. *Journal of Information Technology*, 30(2), 161–173.
- Böhm, M., Henningson, S., Leimeister, J.M., Yetton, P. and Krcmar, H. (2011). A Dual View on IT Challenges in Corporate Divestments and Acquisitions, in Proceedings of International Conference on Information Systems (Shanghai, China, 2011); Atlanta, USA: Association for Information Systems.
- Boudon, R., Clark, J., Modgil, C., Modgil, S., Cohen, I.B., Duffin, K., et al. (1991). What Middle-range Theories Are. *Contemporary Sociology*, 20(4), 519–522.
- Brown, C.V., Clancy, G., and Scholer, R. (2003). A Post-Merger IT Integration Success Story: Sallie Mae. *MIS Quarterly Executive*, 2(1), 15–27.
- Brunetto, G. (2006). Integrating Information Systems During Mergers: Integration Modes Typology, Prescribed vs Constructed Implementation Process, in Proceedings of European Conference on Information Systems (Gothenburg, Sweden, 2006); Atlanta, USA: Association for Information Systems.
- Buck-Lew, M., Wardle, C.E., and Pliskin, N. (1992). Accounting for Information Technology in Corporate Acquisitions. *Information & Management*, 22(6), 363–370.
- Busquets, J. (2015). Discovery Paths: Exploring Emergence and IT Evolutionary design in Cross-Border M&As. Analysing grupo Santander's Acquisition of Abbey (2004–2009). *European Journal of Information Systems*, 24(2), 178–201.
- Chang, S.-I., Chang, I.-C., and Wang, T. (2014). Information Systems Integration After Merger and Acquisition. *Industrial Management & Data Systems*, 114(1), 37–52.
- Cyert, R.M. and March, J.G. (1963). *A Behavioral Theory of the Firm*. Englewood Cliffs, NJ: Prentice-Hall.
- Dhillon, G., Syed, R. and Pedron, C. (2016). Interpreting Information Security Culture: An Organizational Transformation Case Study, *Computers & Security* 56(February 2016): 63–69.
- Du, K. (2015). Research Note—Parenting New Acquisitions: Acquirers' Digital Resource Redeployment and Targets' Performance Improvement in the US Hospital Industry. *Information Systems Research*, 26(4), 829–844.
- Duncan, N.B. (1995). Capturing flexibility of Information Technology Infrastructure: A Study of Resource Characteristics and Their Measure. *Journal of Management Information Systems*, 12(2), 37–57.
- Dutton, J.E. and Duncan, R.B. (1987). The Creation of Momentum for Change through the Process of Strategic Issue Diagnosis. *Strategic Management Journal*, 8(3), 279–295.
- Dutton, J.E. and Jackson, S.E. (1987). Categorizing Strategic Issues: Links to Organizational Action. *Academy of Management Review*, 12(1), 76–90.
- Eckert, M.-L., Freitag, A., Matthes, F., Roth, S. and Schulz, C. (2012). Decision Support for Selecting an Application Landscape Integration Strategy in Mergers and Acquisitions, in Proceedings of European Conference on Information Systems (Barcelona, Spain, 2012); Atlanta, USA: Association for Information Systems.
- Freitag, A., Matthes, F. and Schulz, C. (2010). A Method for Consolidating Application Landscapes During the Post-Merger-Integration Phase, in Proceedings of International Multiconference on Computer Science and Information Technology (IMCSIT) (Wisla, Poland, 2010), pp. 241–248; Chicago, USA: IEEE Computer Society Press.
- Garcia-Canal, E., Rialp-Criado, A., and Rialp-Criado, J. (2013). Speed of ICT Integration Strategies in Absorptions: Insights from a Qualitative Study. *European Management Journal*, 31(3), 295–307.
- Giacomazzi, F., Panella, C., Pernici, B. and Sansoni, M. (1997). Information Systems Integration in Mergers and Acquisitions: A Normative Model. *Information & Management*, 32(6), 289–302.
- Glazar-Stavnicky, M. (2016). Organizational and Systems Factors Leading to Systems Integration Success after Merger and Acquisition. Cleveland State University, Unpublished PhD thesis.
- Gorla, N. and Pang, P. (2001). Fit Between MIS Integration Strategies and Business Acquisition Strategies. *ASCI Journal of Management*, 30(1&2), 1–8.
- Graebner, M.E., Eisenhardt, K.M. and Roundy, P.T. (2010). Success and Failure in Technology Acquisitions: Lessons for Buyers and Sellers. *The Academy of Management Perspectives*, 24(3), 73–92.
- Grant, R.M. (1996). Toward a Knowledge-Based Theory of the Firm. *Strategic Management Journal*, 17(52), 109–122.
- Gregory, R.W., Keil, M. and Muntermann, J. (2012). Ambidextrous IS Strategy: The Dynamic Balancing Act of Developing a 'Transform & Merge' Strategy in the Banking Industry, in Proceedings of International Conference of Information Systems (Orlando, USA, 2012); Atlanta, USA: Association for Information Systems.
- Haleblian, J., Devers, C.E., McNamara, G., Carpenter, M.A., and Davison, R.B. (2009). Taking Stock of What We Know About Mergers and Acquisitions: A Review and Research Agenda. *Journal of Management*, 35(3), 469.
- Haspeslagh, C. and Jemison, B. (1991). *Managing Acquisitions. Creating Value Through Corporate Renewal*. New York: The Free Press.
- Helfat, C.E., Finkelstein, S., Mitchell, W., Peteraf, M., Singh, H., Teece, D., et al. (2009). *Dynamic Capabilities: Understanding Strategic Change in Organizations*. Hoboken, USA: John Wiley & Sons.
- Henningson, S. (2015). Learning to Acquire: How Serial Acquirers Build Organisational Knowledge for Information Systems Integration. *European Journal of Information Systems*, 24(2), 121–144.
- Henningson, S. and Carlsson, S.A. (2011). The DySIIM Model for Managing IS integration in Mergers and Acquisitions. *Information Systems Journal*, 21(5), 441–476.
- Henningson, S. and Kettinger, W.J. (2016). Managing IT Integration Risk in Acquisitions. *MIS Quarterly Executive*, 15(1), 1–19.
- Henningson, S., Kude, T. and Popp, K.M. (2016). Managing the Technology Acquisition Integration Paradox at SAP, in Proceedings of International Conference of Information Systems (Dublin, Ireland, 2016); Atlanta, USA: Association for Information Systems.
- Henningson, S. and Øhrgaard, C. (2016). IT Consultants in Acquisition IT Integration. *Business & Information Systems Engineering*, 58(3), 193–212.
- Henningson, S., Svensson, C. and Valen, L. (2007). Mastering the Integration Chaos Following Frequent M&As: IS Integration with SOA Technology, in Proceedings of Hawaii International Conference on System Sciences (Waikoloa, USA, 2007); Chicago, USA: IEEE Computer Society Press.
- Henningson, S. and Yetton, P. (2011). Managing the IT integration of Acquisitions by Multi-Business Organizations, in Proceedings of International Conference of Information Systems (Shanghai, China, 2011); Atlanta, USA: Association for Information Systems.
- Holm-Larsen, M. (2005). ICT Integration in an M&A Process, in Proceedings of Pacific Asia Conference on Information Systems (Bangkok, Thailand, 2005); Atlanta, USA: Association for Information Systems.
- Hsu, J. and Chen, E.T. (2015). The Impact of Mergers and Acquisitions on Information Systems: A Case of A Software Industry Acquisition, *Communications of the IIMA* 6(1): Article 6.
- Hunter, J.E. and Schmidt, F.L. (2004). *Methods of Meta-Analysis: Correcting Error and Bias in Research Findings*. Thousand Oaks, CA: Sage publications.
- Jain, R.P. and Ramesh, B. (2015). The Roles of Contextual Elements in Post-Merger Common Platform Development: An Empirical Investigation. *European Journal of Information Systems*, 24(2), 159–177.
- Jeyaraj, A., Rottman, J.W. and Lacity, M.C. (2006). A Review of the Predictors, Linkages, and Biases in IT Innovation Adoption Research. *Journal of Information Technology*, 21(1), 1–23.
- Johnston, K.D. and Yetton, P.W. (1996). Integrating Information Technology Divisions in a Bank Merger—Fit, Compatibility and Models of Change. *The Journal of Strategic Information Systems*, 5(3), 189–211.
- Kanter, R.M., Yatsko, P. and Raffaelli, R. (2007). CEMEX (A): Building the Global Framework (1985–2004). In: Harvard Business Review Cases. Harvard Business School.



- Kengelbach, J., Klemmer, D.C., Schwetzler, B., Sperling, M.O. and Roos, A. (2011). How the Top Serial Acquirers Create Value [WWW document] https://www.bcgperspectives.com/content/articles/mergers_acquisitions_value_creation_strategy_does_practice_make_perfect_top_serial_acquirers/ (accessed 7th July 2016).
- Kiesler, S. and Sproull, L. (1982). Managerial Response to Changing Environments: Perspectives on Problem Sensing from Social Cognition. *Administrative Science Quarterly*, 27(4), 548–570.
- Kim, H.-G., Iijima, J. and Ho, S. (2005). A Framework for Analysis of Systems Failure in Information Systems Integration. *Industrial Engineering and Management Systems*, 4(2), 207–217.
- King, D.R., Dalton, D.R., Daily, C.M. and Covin, J.G. (2004). Meta-Analyses of Post-Acquisition Performance: Indications of Unidentified Moderators. *Strategic Management Journal*, 25(2), 187–200.
- Kovela, S. and Skok, W. (2012). Mergers and Acquisitions in Banking: Understanding the IT Integration Perspective. *International Journal of Business and Management*, 7(18), 69–80.
- Labusch, N., Koebele, F., Aier, S. and Winter, R. (2013). The Architects' Perspective on Enterprise Transformation: An Explorative Study, in Proceedings of Practice-Driven Research on Enterprise Transformation (Utrecht, The Netherlands, 2013); Berlin: Springer.
- Lacity, M.C., Khan, S. and Yan, A. (2016). Review of the Empirical Business Services Sourcing Literature: An Update and Future Directions. *Journal of Information Technology*, 21(3), 269–328.
- Lacity, M.C., Khan, S., Yan, A. and Willcocks, L.P. (2010). A Review of the IT Outsourcing Empirical Literature and Future Research Directions. *Journal of Information Technology*, 25(4), 395–433.
- Lacity, M.C., Solomon, S., Yan, A. and Willcocks, L.P. (2011). Business Process Outsourcing Studies: A Critical Review and Research Directions. *Journal of Information Technology*, 26(4), 221–258.
- Lee, A.S. (2015). Retrospect and Prospect: Information Systems Research in the Last and Next 25 Years. *Journal of Information Technology*, 25(4), 336–348.
- LeFave, R., Branch, B., Brown, C.V. and Wixom, B. (2008). How Sprint Nextel Reconfigured IT Resources for Results. *MIS Quarterly Executive*, 7(4), 171–179.
- Leidner, D.E. and Kayworth, T. (2006). A Review of Culture in Information Systems Research: Toward a Theory of Information Technology Culture Conflict. *MIS Quarterly*, 30(2), 357–399.
- Lin, F. and Chao, R. (2008). Post-Merger IT integration: An IT Culture Conflict Perspective, in Proceedings of Pacific-Asia Conference on Information Systems (Suzhou, China, 2008); Association for Information Systems.
- Linder, J.C. (1989). Integrating Organizations where Information Technology Matters. Harvard University, Graduate School of Business Administration. Unpublished PhD thesis.
- Main, T.J. and Short, J.E. (1989). Managing the Merger: Building Partnership through IT Planning at the New Baxter. *MIS Quarterly*, 13(4), 469–484.
- Malone, T.W. and Crowston, K. (1994). The Interdisciplinary Study of Coordination. *ACM Computing Surveys*, 26(1), 87–119.
- March, J.G. and Simon, H.A. (1958). *Organizations*. New York: Wiley.
- McKiernan, P. and Merali, Y. (1995). Integrating Information Systems After a Merger. *Long Range Planning*, 28(4), 454–562.
- Medema, S.G. (1996). Coase, Costs, and Coordination. *Journal of Economic Issues*, 30(2), 571–578.
- Mehta, M. and Hirschheim, R. (2007). Strategic Alignment in Mergers and Acquisitions: Theorizing IS Integration Decision Making. *Journal of the Association for Information Systems*, 8(3), 143–174.
- Merali, Y. and McKiernan, P. (1993). The Strategic Positioning of Information Systems in Post-Acquisition Management. *The Journal of Strategic Information Systems*, 2(2), 105–124.
- Morsell, G.A., Deek, F. and Chakrabarti, A. (2009). Post-Merger Technology Integration: Influential Organization and Information Systems Factors, in Proceedings of Americas Conference on Information Systems (San Francisco, USA, 2009); Atlanta, USA: Association for Information Systems.
- Myers, M.D. (2008). Integration of Different ERP Systems: The Case of Mergers and Acquisitions, in Proceedings of Pacific Asia Conference on Information Systems (Suzhou, China, 2008); Atlanta, USA: Association for Information Systems.
- Ocasio, W. (1997). Towards an Attention-Based View of the Firm, *Strategic Management Journal* 18(Summer special issue): 187–206.
- Okoli, C. and Schabram, K. (2010). A Guide to Conducting a Systematic Literature Review of Information Systems Research, *Sprouts: Working Papers on Information Systems* 10(26).
- Reynolds, P. and Yetton, P. (2015). Aligning Business and IT Strategies in Multi-Business Organizations. *Journal of Information Technology*, 30(2), 101–118.
- Richmond, W.B. and Seidmann, A.B. (1992). Incomplete Contracting Issues in Information Systems Development Outsourcing. *Decision Support Systems*, 8(5), 459–477.
- Robbins, S.S. and Stylianou, A.C. (1999). Post-Merger Systems Integration: The Impact on IS Capabilities. *Information & Management*, 36(4), 205–212.
- Robertson, S. and Powell, P. (2001). Managing the IS Function During Mergers, in Proceedings of European Conference on Information Systems (Bled, Slovenia, 2001); Atlanta, USA: Association for Information Systems.
- Ross, J.W., Weill, P. and Robertson, D. (2006). *Enterprise Architecture as Strategy: Creating a Foundation for Business Execution*. Boston, MA, United States: Harvard Business Press.
- Rowe, F. (2014). What Literature Review is Not: Diversity, Boundaries and Recommendations. *European Journal of Information Systems*, 23(3), 241–255.
- Saldaña, J. (2009). *The Coding Manual for Qualitative Researchers*. Los Angeles, CA: Sage.
- Sarrazin, H. and West, A. (2011). Understanding the Strategic Value of IT in M&A. *McKinsey Quarterly*, 12(1), 1–6.
- Schonewille, J. and Bouwman, W. (2012). Contextual Aspects in Enterprise Integration, in Proceedings of 45th Hawaii International Conference on System Science (Maui, USA, 2012); Chicago, USA: IEEE Computer Society.
- Scott Morton, M.S. (1991). *The Corporation of the 1990s: Information Technology and Organizational Transformation*. Oxford, United Kingdom: Oxford University Press.
- Seddon, P.B., Reynolds, P. and Willcocks, L.P. (2010). Post-Merger IT integration: A Comparison of two Case Studies, in Proceedings of Pacific Asia Conference on Information Systems (Taipei, Taiwan, 2010); Atlanta, USA: Association for Information Systems.
- Steininger, K., Kempinger, B., Schiffer, S. and Pomberger, G. (2016a). Critical IS Success Factor Analysis in the Context of a Hospital Merger, in Proceedings of Americas Conference on Information Systems (San Diego, 2016); Atlanta, USA: Association for Information Systems.
- Steininger, K., Kempinger, B., Schiffer, S. and Pomberger, G. (2016b). A Process Model for IT Migrations in the Context of a Hospital Merger-Results from an Austrian Case Study. *Studies in Health Technology and Informatics*, 223(1), 182–190.
- Strauss, A. and Corbin, J. (1990). *Basics of Qualitative Research: Grounded Theory Procedures and Techniques*. Thousand Oaks, USA: Sage.
- Stylianou, A.C., Jeffries, C.J. and Robbins, S.S. (1996). Corporate Mergers and the Problems of IS Integration. *Information & Management*, 31(4), 203–213.
- Sumi, T. and Tsuruoka, M. (2002). Ramp New Enterprise Information Systems in a Merger & Acquisition Environment: A Case Study. *Journal of Engineering and Technology Management*, 19(1), 93–104.
- Tafti, A.R. (2009). The Role of Information Technology in Alliances and Mergers. University of Michigan. Unpublished PhD Thesis.
- Tanriverdi, H. and Uysal, V.B. (2011). Cross-Business Information Technology Integration and Acquirer Value Creation in Corporate Mergers and Acquisitions. *Information Systems Research*, 22(4), 703–720.
- Tanriverdi, H. and Uysal, V.B. (2015). When IT Capabilities are not Scale-Free in Merger and Acquisition Integrations: How do Capital Markets React to IT capability Asymmetries Between Acquirer and Target? *European Journal of Information Systems*, 24(2), 145–158.
- Thompson, J.D. (1967). *Organizations in Action: Social Science Bases of Administrative Theory* (1st ed.). Edison, NJ: Transaction Publishers.
- Thomson Reuters (2017). Mergers & Acquisitions Review - Full Year 2016 [WWW document] http://share.thomsonreuters.com/general/PR/MA_4Q_2016_E.pdf (accessed 10th February 2017).
- Tiwana, A. and Konsynski, B. (2010). Complementarities Between Organizational IT Architecture and Governance Structure. *Information Systems Research*, 21(2), 288–304.
- Toppenberg, G. (2015). Expanded Understanding of IS/IT Related Challenges in Mergers and Acquisitions: Methods & Research Context, in Proceedings of European Conference on Information Systems (Münster, Germany, 2015); Atlanta, USA: Association for Information Systems.
- Toppenberg, G., Henningson, S. and Shanks, G. (2015). How Cisco Systems Used Enterprise Architecture Capability to Sustain Acquisition-Based Growth. *MIS Quarterly Executive*, 14(4), 151–168.
- Unkan, E. and Thönissen, B. (2015). EPOs, an Early Warning System for Post-merger IS Integration, in Proceedings of International Conference on Business Information Systems (Leipzig, Germany, 2015); Berlin: Springer.



- Vaniya, N., Bernus, P. and Noran, O. (2013). Analysing the M&A Preparedness Building Approach, in Proceedings of International Conference on Enterprise Information Systems (Angers, France, 2013); Berlin: Springer.
- Vieru, D. and Rivard, S. (2014). Organizational Identity Challenges in a Post-Merger Context: A Case Study of an Information System Implementation Project. *International Journal of Information Management*, **34**(3), 381–386.
- Vieru, D. and Rivard, S. (2015). Knowledge Sharing Challenges during Post-Merger Integration: The Role of Boundary Spanners and of Organizational Identity. *International Journal of Business and Management*, **10**(11), 1–12.
- Vieru, D., Rivard, S. and Bourdeau, S. (2016). From Boundary Shaker to Boundary Consolidator by Ways of Symbolic Discourses in a Post-Merger Integration Context, in Proceedings of International Conference on Information Systems (Dublin, Ireland, 2016); Atlanta, USA: Association for Information Systems.
- Walsh, J.P. (1995). Managerial and Organizational Cognition: Notes from a Trip Down Memory Lane. *Organization Science*, **6**(3), 280–321.
- Weber, Y. and Pliskin, N. (1996). The Effects of Information Systems Integration and Organizational Culture on a Firm's Effectiveness. *Information & Management*, **30**(2), 81–90.
- Webster, J. and Watson, R.T. (2002). Analyzing the Past to Prepare for the Future: Writing a Literature Review. *MIS Quarterly* **26**(2): xiii–xxiii.
- Wijnhoven, F., Spil, T., Stegwee, R. and Fa, R.T.A. (2006). Post-Merger IT Integration Strategies: An IT Alignment Perspective. *The Journal of Strategic Information Systems*, **15**(1), 5–28.
- Williams, G.S., Mayer, R.W., Chien, W.-W. and Williams, C.R. (2015). Information Technology Integration in a Postmerger Environment. *Journal of Leadership, Accountability and Ethics*, **12**(1), 39–51.
- Wynne, P.J. (2016). Developing Acquisition IS Integration Capabilities: The Learning Processes of Novice Acquirers, in Proceedings of Australasian Conference on Information Systems (Wollongong, Australia, 2016); Atlanta, USA: Association for Information Systems.
- Yetton, P., Henningsson, S. and Bjørn-Andersen, N. (2013). "Ready to Acquire": The IT Resources Required for a Growth-by-Acquisition Business Strategy. *MIS Quarterly Executive*, **12**(1), 19–35.

contexts that include corporate mergers and acquisitions and international trade processes. Previous publications include peer-refereed papers published in academic journals such as *Journal of Management Information Systems*, *Information Systems Journal*, *European Journal of Information Systems*, and *Journal of Strategic Information Systems*, as well as practice-oriented journals such as *Management Information Systems Quarterly Executive* and *Cutter Business Technology Journal*.

Philip W. Yetton (philip.yetton@deakin.edu.au) is a Professorial Research Fellow in the Information Systems and Business Analytics Department, Deakin University, Australia. He has published widely in Management and IS Research Journals, including multiple papers in *JIT* and *MISQ*. His recent major areas of interest include M&A ISI, IS and Business Alignment, IT Outsourcing, and Methodology, including CMV and meta-analysis. For an extended period, he has been a visiting professor at the Copenhagen Business School and has recently been appointed an International Ambassador at the Technological University of Munich.

Peter J. Wynne (p.j.w.digi@cbs.dk) is an industrial Ph.D. Candidate at the Department of Digitalization, Copenhagen Business School and Maersk Line, where he does engaged research on the preparation of large enterprises to be 'IT-ready to acquire'. Wynne has more than ten years of professional experience in IT management and has presented his research in international conferences.

About the Authors

Stefan Henningsson is an Associate Professor at Copenhagen Business School, Department of Digitalization. His current research addresses managerial aspects of IT in

Appendix A: Paper overview

See Tables [A1](#), [A2](#), [A3](#) and [A4](#).



Table A1 Papers in the review.

References

- 1 **Al Suliman, M.H.** (2015). In Mergers and Acquisitions-IT: Results of the Absence of CIO in Ex-ante Planning and the Absence of Key IT Staff in Ex-post Integration, *Journal of Management Information Systems & E-commerce* 2(2): 1–110.
- 2 **Alaranta, M. and Henningsson, S.** (2008). An Approach to Analyzing and Planning Post-Merger IS Integration: Insights from two Field Studies, *Information Systems Frontiers* 10(3): 307–319.
- 3 **Alaranta, M. and Kautz, K.** (2012). A framework for Understanding Post-Merger Information Systems Integration, *Journal of Information Technology Theory and Application* 13(1): 5–29.
- 4 **Alaranta, M.E. and Martela, E.** (2012). Overcoming Knowledge Gaps in Postmerger Integration, in Proceedings of International Conference on Information Systems (Orlando, USA, 2012); Atlanta, USA: Association for Information Systems.
- 5 **Baker, E.W. and Niederman, F.** (2014). Integrating the IS Functions after Mergers and Acquisitions: Analyzing Business-IT Alignment, *The Journal of Strategic Information Systems* 23(2): 112–127.
- 6 **Benitez-Amado, J. and Ray, G.** (2012). Introducing IT-enabled Business Flexibility and IT Integration in the Acquirer's M&A Performance Equation, in Proceedings of International Conference on Information Systems (Orlando, USA, 2012); Atlanta, USA: Association for Information Systems.
- 7 **Bhattacharya, P.** (2016). Identifying Four Key Means of Business Value Creation using Enterprise Systems: An Empirical Study, *Journal of International Technology and Information Management* 25(1): 19–38.
- 8 **Böhm, M., Henningsson, S., Leimeister, J.M., Yetton, P. and Krcmar, H.** (2011). A Dual View on IT Challenges in Corporate Divestments and Acquisitions, in Proceedings of International Conference on Information Systems (Shanghai, China, 2011); Atlanta, USA: Association for Information Systems.
- 9 **Brown, C.V., Clancy, G. and Scholer, R.** (2003). A Post-Merger IT Integration Success Story: Sallie Mae, *MIS Quarterly Executive* 2(1): 15–27.
- 10 **Brunetto, G.** (2006). Integrating Information Systems During Mergers: Integration Modes Typology, Prescribed vs Constructed Implementation Process, in Proceedings of European Conference on Information Systems (Gothenburg, Sweden, 2006); Atlanta, USA: Association for Information Systems.
- 11 **Buck-Lew, M., Wardle, C.E. and Pliskin, N.** (1992). Accounting for Information Technology in Corporate Acquisitions, *Information & Management* 22(6): 363–370.
- 12 **Busquets, J.** (2015). Discovery Paths: Exploring Emergence and IT Evolutionary Design in Cross-Border M&As. Analysing grupo Santander's Acquisition of Abbey (2004–2009), *European Journal of Information Systems* 24(2): 178–201.
- 13 **Chang, S.-I., Chang, I.-C. and Wang, T.** (2014). Information Systems Integration After Merger and Acquisition, *Industrial Management & Data Systems* 114(1): 37–52.
- 14 **Chun, M. and Whitfield, G.** (2008). Social Constraints to Integrating Information Systems, Knowledge, and Firm Capabilities Following a Corporate Merger, *Journal of Systems and Information Technology* 10(2): 135–158.
- 15 **Dhillon, G., Syed, R. and Pedron, C.** (2016). Interpreting Information Security Culture: An Organizational Transformation Case Study, *Computers & Security* 56(February 2016): 63–69.
- 16 **Du, K.** (2015). Research Note—Parenting New Acquisitions: Acquirers' Digital Resource Redeployment and Targets' Performance Improvement in the US Hospital Industry, *Information Systems Research* 26(4): 829–844.
- 17 **Eckert, M.-L., Freitag, A., Matthes, F., Roth, S. and Schulz, C.** (2012). Decision Support for Selecting an Application Landscape Integration Strategy in Mergers and Acquisitions, in Proceedings of European Conference on Information Systems (Barcelona, Spain, 2012); Atlanta, USA: Association for Information Systems.
- 18 **Freitag, A., Matthes, F. and Schulz, C.** (2010). A Method for Consolidating Application Landscapes During the Post-Merger-Integration Phase, in Proceedings of International Multiconference on Computer Science and Information Technology (IMCSIT) (Wislá, Poland, 2010), pp: 241–248; Chicago, USA: IEEE Computer Society Press.
- 19 **García-Canal, E., Rialp-Criado, A. and Rialp-Criado, J.** (2013). Speed of ICT Integration Strategies in Absorptions: Insights from a Qualitative Study, *European Management Journal* 31(3): 295–307.
- 20 **Giacomazzi, F., Panella, C., Pernici, B. and Sansoni, M.** (1997). Information Systems Integration in Mergers and Acquisitions: A Normative Model, *Information & Management* 32(6): 289–302.
- 21 **Glazar-Stavnický, M.** (2016). Organizational and Systems Factors Leading to Systems Integration Success after Merger and Acquisition. Cleveland State University, Unpublished PhD thesis.
- 22 **Gorla, N. and Pang, P.** (2001). Fit Between MIS Integration Strategies and Business Acquisition Strategies, *ASCI Journal of Management* 30(1&2): 1–8.
- 23 **Gregory, R.W., Keil, M. and Muntermann, J.** (2012). Ambidextrous IS Strategy: The Dynamic Balancing Act of Developing a 'Transform & Merge' Strategy in the Banking Industry, in Proceedings of International Conference of Information Systems (Orlando, USA, 2012); Atlanta, USA: Association for Information Systems.
- 24 **Henningsson, S.** (2015). Learning to Acquire: How Serial Acquirers Build Organisational Knowledge for Information Systems Integration, *European Journal of Information Systems* 24(2): 121–144.
- 25 **Henningsson, S. and Carlsson, S.A.** (2011). The DySIIM Model for Managing IS integration in Mergers and Acquisitions, *Information Systems Journal* 21(5): 441–476.



Table A1 Continued

-
- | # | References |
|----|--|
| 26 | Henningsson, S. and Kettinger, W.J. (2016). Managing IT Integration Risk in Acquisitions, <i>MIS Quarterly Executive</i> 15(1): 1–19. |
| 27 | Henningsson, S., Kude, T. and Popp, K.M. (2016). Managing the Technology Acquisition Integration Paradox at SAP, in Proceedings of International Conference of Information Systems (Dublin, Ireland, 2016); Atlanta, USA: Association for Information Systems. |
| 28 | Henningsson, S., Svensson, C. and Vallen, L. (2007). Mastering the Integration Chaos Following Frequent M&As: IS Integration with SOA Technology, in Proceedings of Hawaii International Conference on System Sciences (Waikoloa, USA, 2007); Chicago, USA: IEEE Computer Society Press. |
| 29 | Henningsson, S. and Yetton, P. (2011). Managing the IT integration of Acquisitions by Multi-Business Organizations, in Proceedings of International Conference of Information Systems (Shanghai, China, 2011); Atlanta, USA: Association for Information Systems. |
| 30 | Henningsson, S. and Øhrgaard, C. (2016). IT Consultants in Acquisition IT Integration, <i>Business & Information Systems Engineering</i> 58(3): 193–212. |
| 31 | Holm-Larsen, M. (2005). ICT Integration in an M&A Process, in Proceedings of Pacific Asia Conference on Information Systems (Bangkok, Thailand, 2005); Atlanta, USA: Association for Information Systems. |
| 32 | Hsu, J. and Chen, E.T. (2015). The Impact of Mergers and Acquisitions on Information Systems: A Case of A Software Industry Acquisition, <i>Communications of the IIMA</i> 6(1): Article 6. |
| 33 | Jain, R.P. and Ramesh, B. (2015). The Roles of Contextual Elements in Post-Merger Common Platform Development: An Empirical Investigation, <i>European Journal of Information Systems</i> 24(2): 159–177. |
| 34 | Johnston, K.D. and Yetton, P.W. (1996). Integrating Information Technology Divisions in a Bank Merger – Fit, Compatibility and Models of Change, <i>The Journal of Strategic Information Systems</i> 5(3): 189–211. |
| 35 | Kim, H.-G., Iijima, J. and Ho, S. (2005). A Framework for Analysis of Systems Failure in Information Systems Integration, <i>Industrial engineering and management systems</i> 4(2): 207–217. |
| 36 | Kovela, S. and Skok, W. (2012). Mergers and Acquisitions in Banking: Understanding the IT Integration Perspective, <i>International Journal of Business and Management</i> 7(18): 69–80. |
| 37 | Labusch, N., Koebele, F., Aier, S. and Winter, R. (2013). The Architects' Perspective on Enterprise Transformation: An Explorative Study, in Proceedings of Practice-Driven Research on Enterprise Transformation (Utrecht, The Netherlands, 2013); Berlin: Springer. |
| 38 | LeFave, R., Branch, B., Brown, C.V. and Wixom, B. (2008). How Sprint Nextel Reconfigured IT Resources for Results, <i>MIS Quarterly Executive</i> 7(4): 171–179. |
| 39 | Lin, F. and Chao, R. (2008). Post-Merger IT integration: An IT Culture Conflict Perspective, in Proceedings of Pacific-Asia Conference on Information Systems (Suzhou, China, 2008); Association for Information Systems. |
| 40 | Linder, J.C. (1989). Integrating Organizations where Information Technology Matters. Harvard University, Graduate School of Business Administration. Unpublished PhD thesis. |
| 41 | Main, T.J. and Short, J.E. (1989). Managing the Merger: Building Partnership through IT Planning at the New Baxter, <i>MIS Quarterly</i> 13(4): 469–484. |
| 42 | McKiernan, P. and Merali, Y. (1995). Integrating Information Systems after a Merger, <i>Long Range Planning</i> 28(4): 454–562. |
| 43 | Mehta, M. and Hirschheim, R. (2007). Strategic Alignment in Mergers and Acquisitions: Theorizing IS Integration Decision Making, <i>Journal of the Association for Information Systems</i> 8(3): 143–174. |
| 44 | Merali, Y. and McKiernan, P. (1993). The Strategic Positioning of Information Systems in Post-Acquisition Management, <i>The Journal of Strategic Information Systems</i> 2(2): 105–124. |
| 45 | Morsell, G.A., Deek, F. and Chakrabarti, A. (2009). Post-Merger Technology Integration: Influential Organization and Information Systems Factors, in Proceedings of Americas Conference on Information Systems (San Francisco, USA, 2009); Atlanta, USA: Association for Information Systems. |
| 46 | Myers, M.D. (2008). Integration of Different ERP Systems: The Case of Mergers and Acquisitions, in Proceedings of Pacific Asia Conference on Information Systems (Suzhou, China, 2008); Atlanta, USA: Association for Information Systems. |
| 47 | Parada, P., Alemany, L. and Planellas, M. (2009). The Internationalisation of Retail Banking: Banco Santander's Journey Towards Globalisation. <i>Long Range Planning</i> 42(5): 654–677. |
| 48 | Robbins, S.S. and Stylianou, A.C. (1999). Post-Merger Systems Integration: The Impact on IS Capabilities, <i>Information and Management</i> 36(4): 205–212. |
| 49 | Robertson, S. and Powell, P. (2001). Managing the IS Function During Mergers, in Proceedings of European Conference on Information Systems (Bled, Slovenia, 2001); Atlanta, USA: Association for Information Systems. |
| 50 | Schonewille, J. and Bouwman, W. (2012). Contextual Aspects in Enterprise Integration, in Proceedings of 45th Hawaii International Conference on System Science (Maui, USA, 2012); Chicago, USA: IEEE Computer Society. |
-



Table A1 Continued

References

- 51 **Seddon, P.B., Reynolds, P. and Willcocks, L.P.** (2010). Post-Merger IT integration: A Comparison of two Case Studies, in Proceedings of Pacific Asia Conference on Information Systems (Taipei, Taiwan, 2010); Atlanta, USA: Association for Information Systems.
- 52 **Steininger, K., Kempinger, B., Schiffer, S. and Pomberger, G.** (2016). Critical IS Success Factor Analysis in the Context of a Hospital Merger, in Proceedings of Americas Conference on Information Systems (San Diego, 2016); Atlanta, USA: Association for Information Systems.
- 53 **Steininger, K., Kempinger, B., Schiffer, S. and Pomberger, G.** (2016). A Process Model for IT Migrations in the Context of a Hospital Merger-Results from an Austrian Case Study, *Studies in health technology and Informatics* **223**(1): 182–190.
- 54 **Stylianou, A.C., Jeffries, C.J. and Robbins, S.S.** (1996). Corporate Mergers and the Problems of IS Integration, *Information & Management* **31**(4): 203–213.
- 55 **Sumi, T. and Tsuruoka, M.** (2002). Ramp New Enterprise Information Systems in a Merger & Acquisition Environment: A Case Study, *Journal of Engineering and Technology Management* **19**(1): 93–104.
- 56 **Tafti, A.R.** (2009). The Role of Information Technology in Alliances and Mergers. University of Michigan. Unpublished PhD Thesis.
- 57 **Tanriverdi, H. and Uysal, V.B.** (2011). Cross-Business Information Technology Integration and Acquirer Value Creation in Corporate Mergers and Acquisitions, *Information Systems Research* **22**(4): 703–720.
- 58 **Tanriverdi, H. and Uysal, V.B.** (2015). When IT Capabilities are not Scale-Free in Merger and Acquisition Integrations: How do Capital Markets React to IT capability Asymmetries Between Acquirer and Target?, *European Journal of Information Systems* **24**(2): 145–158.
- 59 **Toppenberg, G.** (2015). Expanded Understanding of IS/IT Related Challenges in Mergers and Acquisitions: Methods & Research Context, in Proceedings of European Conference on Information Systems (Münster, Germany, 2015); Atlanta, USA: Association for Information Systems.
- 60 **Toppenberg, G., Henningsson, S. and Shanks, G.** (2015). How Cisco Systems Used Enterprise Architecture Capability to Sustain Acquisition-Based Growth, *MIS Quarterly Executive* **14**(4): 151–168.
- 61 **Unkan, E. and Thönssen, B.** (2015). EPOs, an Early Warning System for Post-merger IS Integration, in Proceedings of International Conference on Business Information Systems (Leipzig, Germany, 2015); Berlin: Springer.
- 62 **Vaniya, N., Bernus, P. and Noran, O.** (2013). Analysing the M&A Preparedness Building Approach, in Proceedings of International Conference on Enterprise Information Systems (Angers, France, 2013); Berlin: Springer.
- 63 **Weber, Y. and Pliskin, N.** (1996). The Effects of Information Systems Integration and Organizational Culture on a Firm's Effectiveness, *Information & Management* **30**(2): 81–90.
- 64 **Vieru, D. and Rivard, S.** (2014). Organizational Identity Challenges in a Post-Merger Context: A Case Study of an Information System Implementation Project, *International Journal of Information Management* **34**(3): 381–386.
- 65 **Vieru, D. and Trudel, M.C.** (2013). Unpredictable Reconfigurations: The Dilemma of the Post-Merger Information Systems Integration. *International Journal of Social and Organizational Dynamics in IT*, **3**(1): 47–60.
- 66 **Vieru, D., Rivard, S. and Bourdeau, S.** (2016). From Boundary Shaker to Boundary Consolidator by Ways of Symbolic Discourses in a Post-Merger Integration Context, in Proceedings of International Conference on Information Systems (Dublin, Ireland, 2016); Atlanta, USA: Association for Information Systems.
- 67 **Wijnhoven, F., Spil, T., Stegwee, R. and Fa, R.T.A.** (2006). Post-Merger IT Integration Strategies: An IT Alignment Perspective, *The Journal of Strategic Information Systems* **15**(1): 5–28.
- 68 **Williams, G.S., Mayer, R.W., Chien, W.-W. and Williams, C.R.** (2015). Information Technology Integration in a Postmerger Environment, *Journal of Leadership, Accountability and Ethics* **12**(1): 39–51.
- 69 **Wynne, P.J.** (2016). Developing Acquisition IS Integration Capabilities: The Learning Processes of Novice Acquirers, in Proceedings of Australasian Conference on Information Systems (Wollongong, Australia, 2016); Atlanta, USA: Association for Information Systems.
- 70 **Yetton, P., Henningsson, S. and Bjørn-Andersen, N.** (2013). “Ready to Acquire”: The IT Resources Required for a Growth-by-Acquisition Business Strategy, *MIS Quarterly Executive* **12**(1): 19–35.

**Table A2** Research methods.

Research methods	Frequency
Single case	29
Multi-case	21
Survey	5
Database	4
Expert panel	4
Multi-case and survey	2
Survey and database	2
Design science	1
Expert panel and survey	1
Focus group	1

Table A3 Object of study.

Object of study	Frequency ^a
M&A generic	37
Acquisition	17
Merger	16
Divestment	1

^aOne article has both the acquisition and divestment as its object of study.

Table A4 Theoretical framework.

Theoretical framework	Frequency ^a
No explicit theory	37
Alignment theory	8
Resource-based view	7
Process perspective	4
Strategic planning	2
Structuralist	1
Individualist	1
Knowledge transfer	1
Evolutionary organization theory	1
Knowledge-based view	1
Culture conflict	1
Organizational identity	1
Sociomaterial practice	1
Ambidextrous IS Strategy	1
Governance theory	1
Practice perspective	1
Learning theory	1
Boundary spanning	1
Cultural messages	1

^aOne article explicitly combines structuralist, individualist and process perspectives.

Appendix B: Master variables

See Tables B1 and B2.

Table B1 Independent master variables.

#	Independent master variable
1	Acquirer's IT capability. The general IT capability of the acquiring firm (e.g., Tanriverdi and Uysal, 2011)
2	Acquiring another MBO. If the target acquired is another multi-business organization (e.g., Du, 2015)
3	Acquiring from another MBO. If the target is acquired from another multi-business organization (e.g., Du, 2015)
4	Aligned post-M&A state. Business and IT alignment as a post-M&A state (e.g., Mehta and Hirschheim, 2007)
5	Alignment of integration objectives. The fit between the organizational integration objectives and the ISI objectives (e.g., Wijnhoven <i>et al.</i> , 2006)
6	Alignment of integration processes. Fit between the choice of organizational integration process and ISI process (e.g., Baker and Niederman, 2014)
7	Alignment of vendor and acquirer IT transaction strategies. The fit between the way a unit is carved-out and integrated (e.g., Böhm <i>et al.</i> , 2011)
8	Application and IT compatibility. The compatibility of technical platforms, programming languages and software (e.g., Chang <i>et al.</i> , 2014)
9	Attention to IT. The level of attention given to ISI issues in the overall organizational integration project (e.g., Merali and McKiernan, 1993)
10	Basic conditions. Technological constraints with importance for the ISI (e.g., Steininger <i>et al.</i> , 2016b)
11	Boundary consolidation. Presence and effectiveness of strategies to collaborate and alter the pre-M&A boundaries (e.g., Vieru <i>et al.</i> , 2016)
12	Boundary spanning versatility. ISI team's ability to assume different roles in the consolidation of stakeholders (Jain and Ramesh, 2015)
13	Burning desire. The eagerness of the team to succeed in a once-in-a-lifetime experience (e.g., Brown <i>et al.</i> , 2003)
14	Business analysis. Quality of the activities to assess the business rationale of integration (e.g., Kim <i>et al.</i> , 2005)
15	Business and IT alignment preconditions. The pre-M&A business and IT alignment in the respective merging organizations (e.g., Henningsson and Yetton, 2011)
16	Business understanding of IS development. The business manager's knowledge about IS development challenges (e.g., Kim <i>et al.</i> , 2005)
17	Business-based priorities. The extent to which business needs drives ISI decision-making (e.g., Kovala and Skok, 2012)
18	Changes in policies and procedures. The extent of M&A-related change in IS policies (e.g., Stylianou <i>et al.</i> , 1996)



Table B1 Continued

#	Independent master variable
19	Changes in workforce size. Increases and decreases in the number of IS staff (e.g., Stylianou <i>et al.</i> , 1996)
20	Cognitive sunk costs. The social and psychological costs associated with altering firm habits and routines that prevent firms from seeing economically feasible alternative (e.g., Chun and Whitfield, 2008)
21	Collaboration dynamics. The spirit of collaboration in the project team (e.g., LeFave <i>et al.</i> , 2008)
22	Common ISI goals. The degree to which commonly accepted and realistic goals are established for the ISI (e.g., Linder, 1989)
23	Communication of M&A activities to IS. The effectiveness by which progress and plans of the M&A are shared with the IS function (e.g., Morsell <i>et al.</i> , 2009)
24	Company language. The language that is commonly used in the company (international vs local) (e.g., Schonewille and Bouwman, 2012)
25	Company scale. The size of a company, as well as its market and operation (e.g., Schonewille and Bouwman, 2012)
26	Comparative analysis. Presence of comparative systems analysis (e.g., Seddon <i>et al.</i> , 2010)
27	Competing business models. The extent of competition between the business models of the merging organizations (e.g., Toppenberg, 2015)
28	Complexity being a criterion for ISI decision. The recognition of ISI method complexity influencing ISI decision (e.g., Robbins and Stylianou, 1999)
29	Complexity. The overall complexity and therefore risk of an ISI method (e.g., Alaranta and Kautz, 2012)
30	Comprehensiveness. Being exhaustive or inclusive in gathering information relevant to ISI planning (e.g., Alaranta and Henningson, 2008)
31	Corporate culture. The way a company and its employees conduct business, work together and view their business operation and industry network (e.g., Schonewille and Bouwman, 2012)
32	Cost focus. The cost for ISI as a decision criteria (e.g., Mehta and Hirschheim, 2007)
33	Cost-efficient ICT. The existence of a pre-M&A cost-efficient IT infrastructure (e.g., Parada <i>et al.</i> , 2009)
34	Cost. The cost characteristics of an ISI method (e.g., Holm-Larsen, 2005)
35	Credible deadlines. The establishment of credible and accepted deadlines (e.g., Linder, 1989)
36	Cross-business IT integration capability. The extent to which the acquirer combines the target's system of complementary IT resources with its own and unifies them into a whole (e.g., Tanriverdi and Uysal, 2011)
37	Culture clashes. The extent of cultural inconsistencies between the merging firms (e.g., Weber and Pliskin, 1996)

Table B1 Continued

#	Independent master variable
38	Data integration. Level of data sharing across applications in combined organization (e.g., Stylianou <i>et al.</i> , 1996)
39	Decision process. The structure of the ISI decision process: market, negotiate, cooperate (e.g., Linder, 1989)
40	Decreases in IS staff compensation. M&A-related limitation in the compensation to IS staff (e.g., Stylianou <i>et al.</i> , 1996)
41	Defined business strategy. Existence of a clearly specified business strategy for the M&A (e.g., Williams <i>et al.</i> , 2015)
42	Degree of ISI. The level to which IS are integrated in the M&A (e.g., Weber and Pliskin, 1996)
43	Development and testing. Presence and quality of adequate IS development and testing (Kim <i>et al.</i> , 2005)
44	Diagnostic capability. The ability to design the mix of ISI methods that fits the M&A (e.g., Yetton <i>et al.</i> , 2013)
45	Differences in management needs. The extent to which management in the merging organization needs different input from IS (e.g., Giacomazzi <i>et al.</i> , 1997)
46	Digital resource redeployment. The extent to which the acquirer's software is implemented in the target after the acquisition (e.g., Du, 2015)
47	Discovery (Consistency). As opposed to planning consistency, the inclusion of emergent variations in ISI plans throughout the ISI (e.g., Busquets, 2015)
48	Distributed decision authority. The distribution of decision-making authority to the seasoned people close to the ISI (e.g., Brown <i>et al.</i> , 2003)
49	Division of integration task. The decomposition of the ISI project into a set of minor tasks (e.g., Sumi and Tsuruoka, 2002)
50	EA capability. The extent to which the EA capability contributes to the ISI (e.g., Toppenberg <i>et al.</i> , 2015)
51	Economic climate. The state of the economy when a M&A takes place (Schonewille and Bouwman, 2012)
52	Effort. The overall resources needed to complete an ISI method (e.g., Eckert <i>et al.</i> , 2012)
53	End-user involvement in ISI. Degree to which end-users are included in integration activities (e.g., Morsell <i>et al.</i> , 2009)
54	Enterprise systems (presence of). The presence of an integrated enterprise-wide IS (e.g., Bhattacharya, 2016)
55	Ex-post evaluation. Presence of activities to assess ISI after completion (e.g., Merali and McKiernan, 1993)
56	Existing IS-IT qualities. The qualities of pre-M&A IS (e.g., Eckert <i>et al.</i> , 2012)
57	Expansion (shrinkage) of target. The changes in size of the target's business (e.g., Du, 2015)
58	Experience variation. The degree of disparity between a set of ISI experiences (e.g., Henningson, 2015)



Table B1 Continued

#	Independent master variable
59	Financial slack – Target. If the target produced a positive financial result pre-M&A (e.g., Du, 2015)
60	Flow. Top-down or bottom-up flow of decisions in ISI planning (e.g., Alaranta and Henningsson, 2008)
61	Focus. Focus on creativity (opportunities) or control (risk) focus in ISI planning (e.g., Alaranta and Henningsson, 2008)
62	For-profit status difference. Whether the transaction is between a for-profit organization and a non-for-profit organization (e.g., Du, 2015)
63	Formalization. The presence of structures, techniques, written procedures and policies to guide the ISI planning (e.g., Alaranta and Henningsson, 2008)
64	Geographical distribution. The extent to which the merging organizations are distributed across different geographical locations (e.g., Mehta and Hirschheim, 2007)
65	Geographical distribution of IS. The placement of IS activities in different locations (e.g., Hsu and Chen, 2015)
66	Geographical distribution of IT. The extent to which IT hardware is located in different locations (e.g., Robbins and Stylianou, 1999)
67	Geographical relatedness. Extent to the merging organizations are present in the same physical locations (e.g., Du, 2015)
68	Habits and practice. The presence of socially resilient pre-M&A practices (e.g., Vieru <i>et al.</i> , 2016)
69	High profitability and high-growth firm. The combination of high profitability and growth pre-M&A (e.g., Tanriverdi and Uysal, 2015)
70	High profitability and low-growth firm. The combination of high profitability and low-growth pre-M&A (e.g., Tanriverdi and Uysal, 2015)
71	HR management. The requirements and aspects of human relations management during and after the migration in terms of effective IS usage (e.g., Steininger <i>et al.</i> , 2016a)
72	Implementation capability. The ability to deploy IT resources to realize ISI (e.g., Yetton <i>et al.</i> , 2013)
73	Inclusion of IT staff. The extent of participation of IS staff in the ISI planning (e.g., Alaranta and Henningsson, 2008)
74	Inclusion of key IT staff in ex-post integration. The assignment of ISI tasks to the most skilled IS employees (e.g., Al Suliman, 2015)
75	Industry characteristics. Features of the industry in which the M&A takes place (e.g., Toppenberg, 2015)
76	Industry relatedness. If the organizations operate in the same industry (e.g., Tanriverdi and Uysal, 2015)
77	Information security management. The degree to which security culture is managed throughout the ISI (e.g., Dhillon <i>et al.</i> , 2016)
78	Integration cost. M&A-related restructuring and integration costs (e.g., Tafti, 2009)

Table B1 Continued

#	Independent master variable
79	IS configuration fit. The degree of compatibility between IS configurations, drawing on the MIT'90s schema (Scott Morton, 1991) (e.g., Johnston and Yetton, 1996)
80	IS culture integration. The extent to which IS cultures of the combined organizations are integrated (e.g., Baker and Niederman, 2014)
81	IS employee morale. IS employees' spirit and belief in ISI (e.g., Stylianou <i>et al.</i> , 1996)
82	ISI area of application. The extent to which applications of the combined organizations are integrated (e.g., Alaranta and Martela, 2012)
83	ISI area of personnel. The extent to which IS personnel of the combined organizations are integrated (e.g., Alaranta and Martela, 2012)
84	ISI process. The quality of the administrative IS supported processes in general and specifically for the M&A project (e.g., Steininger <i>et al.</i> , 2016a)
85	IS morale. The extent to which IS staff morale is critical to the project (e.g., Seddon <i>et al.</i> , 2010)
86	IS organizational compatibility. The compatibility of organizational structures and cultures within the merging IS functions (e.g., Lin and Chao, 2008)
87	IS perception. The credibility of the IS function among business functions (e.g., Yetton <i>et al.</i> , 2013)
88	IS performance. The quality and performance of the pre-M&A IS (e.g., Steininger, 2016a)
89	IS planning. The general approach taken to IS planning (e.g., Robbins and Stylianou, 1999)
90	IS staff motivation. Availability of motivated IS staff (e.g., Kovala and Skok, 2012)
91	IS strategy. General pre-M&A IS strategy (e.g., Gregory <i>et al.</i> , 2012)
92	IS strategy compatibility. The compatibility between the merging organizations IS strategies (e.g., Johnston and Yetton, 1996)
93	IS–business collaboration in planning. Degree of IS participation in M&A planning (e.g., Morsell <i>et al.</i> , 2009)
94	ISI capability. A higher-order construct determined by IT technical infrastructure integration, IT personnel integration and IT and business processes integration capabilities (e.g., Benitez-Amado and Ray, 2012)
95	ISI expertise. A conceptual framework for interpreting acquisition ISI experiences (e.g., Henningsson, 2015)
96	ISI implementation speed. The time needed to complete integration with the right functionality (e.g., Kovala and Skok, 2012)
97	ISI method. The fundamental approach used to combine the IS of the merging organization (e.g., Henningsson and Kettinger, 2016)



Table B1 Continued

#	Independent master variable
98	ISI objectives. The strategic objectives assigned to the IS function in the M&A (e.g., Wijnhoven <i>et al.</i> , 2006)
99	ISI proactivity (vs reactivity). The degree to which IS facilitate organizational change or contribute to deal motivation (e.g., McKiernan and Merali, 1995)
100	ISI routines. A coordinated, repetitive set of organizational activities for implementing ISI (Henningsson, 2015)
101	ISI skill. The involved organizations' available skills for addressing ISI (e.g., Kim <i>et al.</i> , 2005)
102	ISI speed. The time need for ISI as a decision criterion (e.g., Garcia-Canal <i>et al.</i> , 2013)
103	IT communication. Communication between IS function and other organizational units during the ISI (e.g., Morsell <i>et al.</i> , 2009)
104	IT culture conflict management. The extent to which the merging organizations effectively manage cultural conflicts between the merging IS functions (e.g., Lin and Chao, 2008)
105	IT extensiveness. The relative scale of IT assets compared to organizational size (e.g., Du, 2015)
106	IT flexibility. The IT assets' ability to support change in use, commonly compatibility, connectivity, modularity (e.g., Benitez-Amado and Ray, 2012)
107	IT governance mode. Whether an acquired unit is allowed to make independent IT investment decisions (e.g., Du, 2015)
108	IT in charge. IT (vs business) in charge of ISI decision (e.g., Kim <i>et al.</i> , 2005)
109	IT infrastructure. A general construct for the characteristics of the existing IT infrastructure (e.g., Wijnhoven <i>et al.</i> , 2006)
110	ISI team. The qualities of the ISI team (e.g., Alaranta and Kautz, 2012)
111	IT investment at target. The amount invested annually in the target (e.g., Tafti, 2009)
112	IT investment in acquirer. The amount invested annually pre-M&A in the acquirer (e.g., Tafti, 2009)
113	IT leadership in integration project. Quality of the managerial direction during the ISI (e.g., Alaranta and Martela, 2012)
114	IT standardization. The entropy of IT assets (e.g., Du, 2015)
115	Joint sourcing. The decision to source IS through the combined organization (e.g., Seddon <i>et al.</i> , 2010)
116	Language support. The pre-M&A IS' ability for multi-language support (e.g., Mehta and Hirschheim, 2007)
117	Leadership. Quality of managerial leadership in the M&A (e.g., Williams <i>et al.</i> , 2015)
118	Legislation. The legal framework impacting the ISI (Schonewille and Bouwman, 2012)
119	Level of data sharing pre-M&A. The level of data sharing in the organizations pre-M&A (e.g., Robbins and Stylianou, 1999)

Table B1 Continued

#	Independent master variable
120	Level of location integration. The extent to which the merging organization is established in shared physical locations (e.g., Wijnhoven <i>et al.</i> , 2006)
121	Leverage of existing teams. The use of preexisting project teams (e.g., Brown <i>et al.</i> , 2003)
122	Leverage of increased purchasing power. Use of ability of the combined organization to improve purchasing conditions (e.g., Brown <i>et al.</i> , 2003)
123	Long-term integration vision. The extent of long-term considerations influencing ISI decision (e.g., Merali and McKiernan, 1993)
124	Low profitability and high-growth firm. The combination of low profitability and high-growth pre-M&A (e.g., Tanriverdi and Uysal, 2015)
125	M&A context (general). A structural element including ISI method, distribution of decision-making, IS/ business alignment and the role of the IS in the M&A (e.g., Alaranta and Kautz, 2012)
126	M&A experience. The organization's previous M&A experiences (e.g., Du, 2015)
127	M&A motivation. The business reasons why the M&A was decided on (e.g., Myers, 2008)
128	M&A type. The nature of the M&A, hostile vs friendly combination (e.g., Schonewille and Bouwman, 2012)
129	MA frequency. How often the merging parties are involved in M&As (e.g., Henningsson, 2015)
130	Management style. The most dominant and accepted way managers act and behave, including how they plan, communicate, prioritize and make their decisions (e.g., Schonewille and Bouwman, 2012)
131	Modularity. The level of modularization of an IT infrastructure (e.g., Henningsson <i>et al.</i> , 2007)
132	Need for organizational transformation. Pre-M&A accumulated need to restructure and reengineer the company (e.g., Gregory <i>et al.</i> , 2012)
133	Novelty. As opposed to familiarity, the merging organizations' experience and/or access to knowledge of an ISI method (e.g., Henningsson and Kettinger, 2016)
134	Operational uniformity. The way the business operations executed across different units and divisions (e.g., Schonewille and Bouwman, 2012)
135	Organizational integration objectives. The ambition to structurally combine elements from the merging parties (e.g., Henningsson and Carlsson, 2011)
136	Organizational change management. The extent to which the merging organizations effectively manage change (e.g., Baker and Niederman, 2014)
137	Organizational competency fit. The match of performance levels of the organizations (e.g., Glazar-Stavnicky, 2016)
138	Organizational infrastructure. Organizational conditions and priorities (Wijnhoven <i>et al.</i> , 2006)



Table B1 Continued

#	Independent master variable
139	Organizational M&A planning. Quality of the planning for the organizational integration (e.g., Robbins and Stylianou, 1999)
140	Organizational process fit. The match between organizational process efficiency (e.g., Glazar-Stavnicky, 2016)
141	Organizational structure. The division of the organization into units or functions (e.g., Seddon <i>et al.</i> , 2010)
142	Organizational uniformity. The match of organizational characteristics (e.g., Linder, 1989)
143	Outsourcing. Degree of outsourcing in place at the time of the M&A (e.g., Robbins and Stylianou, 1999)
144	Planning style. The way a company and its employees execute plans and undertake scheduling (e.g., Schonewille and Bouwman, 2012)
145	Political considerations. The extent to which political considerations drive ISI decision-making (e.g., Stylianou <i>et al.</i> , 1996)
146	Power and politics. Strategizing for control of the M&A process (e.g., Kovala and Skok, 2012)
147	Preexisting business-IT relations. Established working relationships between IS and business functions (e.g., Seddon <i>et al.</i> , 2010)
148	Pre-M&A alignment. The way a company positions IT within its organization (e.g., Schonewille and Bouwman, 2012)
149	Pre-M&A organizational performance. The pre-M&A financial performance of the organization (e.g., Schonewille and Bouwman, 2012)
150	Prior ISI experience. The IS-related experiences made from the partners' previous M&As (e.g., Benitez-Amado and Ray, 2012)
151	Prioritization of customer-facing applications. If the prioritization of customer-facing applications is a decision criteria (e.g., Brown <i>et al.</i> , 2003)
152	Professional approach. The way a company and its employees approach their jobs and the expertise that is required, the way issues are addressed and what is considered important (e.g., Schonewille and Bouwman, 2012)
153	Project governance approach. The approach used to govern the ISI project (e.g., Henningson <i>et al.</i> , 2016)
154	Project management (of ISI) skills. The ability to manage an ISI project (e.g., Wynne, 2016)
155	Quality of ISI planning. The contribution of IS activities to the overall M&A schedule (e.g., Morsell <i>et al.</i> , 2009)
156	Realistic budget and targets. Avoidance of overly aggressive targets (e.g., Kovala and Skok, 2012)

Table B1 Continued

#	Independent master variable
157	Related experiences. Activities that have shared subactivities or cognitive proximity with ISI (e.g., Henningson, 2015)
158	Relative IT capability. The gap between the IT capabilities of the M&A organizations (e.g., Tanriverdi and Uysal, 2015)
159	Relative size. Relative organizational size (e.g., Du, 2015)
160	Relocation cost minimization. Efficiency of measures to avoid costs relating to the move of physical technology assets (e.g., Brown <i>et al.</i> , 2003)
161	Reporting and documentation. Documentation of the IS changes (e.g., Kim <i>et al.</i> , 2005)
162	Retention packages. The provision of compensation to top talent (e.g., Brown <i>et al.</i> , 2003)
163	Risk management. The level of dedicated effort to manage risk (e.g., Henningson and Kettinger, 2016)
164	Same IT-user organization. M&A partners' participation in the same IT-user organization (e.g., Wijnhoven <i>et al.</i> , 2006)
165	Search for similar operational logic. Ambitions to realize standardized operational practices (e.g., Giacomazzi <i>et al.</i> , 1997)
166	Shareholder return. Whether or not shareholders benefit from the M&A (e.g., Schonewille and Bouwman, 2012)
167	Short-term considerations. The degree to which short-term considerations override initial management actions (e.g., Robertson and Powell, 2001)
168	Simplicity of integration. The ease through which the ISI between the merging organizations can be accomplished (e.g., Giacomazzi <i>et al.</i> , 1997)
169	Slow response to requirements changes. Failure to adapt to changes in demands (e.g., Kim <i>et al.</i> , 2005)
170	Social context. The social relations among the project participants; their social infrastructure; history of the ISI, as well as previous procedures, structures and commitments (e.g., Alaranta and Kautz, 2012)
171	Speed. The time characteristics of an ISI method (e.g., Robertson and Powell, 2001)
172	Stakeholder collaboration. Willingness of stakeholders in the M&A to collaborate (e.g., Williams <i>et al.</i> , 2015)
173	State of mind. The way a company and its employees feel about their position and value in the market (e.g., Schonewille and Bouwman, 2012)
174	System size/complexity. System size and complexity being drivers for ISI decision-making (e.g., Stylianou <i>et al.</i> , 1996)
175	Systems capability fit. The similarity between revenue per IT investment and IT employee (e.g., Glazar-Stavnicky, 2016)

**Table B1** Continued

#	Independent master variable
176	Systems importance for business. The importance of the system being integrated to business (e.g., Wijnhoven <i>et al.</i> , 2006)
177	Systems novelty for users. Unfamiliarity with the post-M&A IS (e.g., Kim <i>et al.</i> , 2005)
178	Systems technology fit. The similarity between investment levels in PC, Server, Printer, Storage and Network lines (e.g., Glazar-Stavnicky, 2016)
179	Target age. The number of years since the target was formed (e.g., Du, 2015)
180	Target size. In the hospital context, number of beds covered (e.g., Du, 2015)
181	Target's IT capability. The general IT capability of the acquired firm (e.g., Tanriverdi and Uysal, 2011)
182	Teaching status. If the hospital is a teaching hospital or not (e.g., Du, 2015)
183	Time pressure. Time pressure caused by internal or external sources to complete ISI (e.g., Mehta and Hirschheim, 2007)
184	Top management steering. Top management exertion of power in specific ISI decisions (e.g., Alaranta and Kautz, 2012)
185	Top management support. The extent of top management's commitment to the ISI (e.g., Kim <i>et al.</i> , 2005)
186	Use of decision criteria. The application of clear criteria and quantitative evaluations to make decisions (e.g., LeFave <i>et al.</i> , 2008)
187	Use of external resources. The extent to which external resources, typically sourced as consultants, contribute to the ISI (e.g., Henningson and Øhrgaard, 2016)
188	Use of prepackaged solutions. The use of off-the-shelf solutions (e.g., Sumi and Tsuruoka, 2002)
189	User involvement in ISI decisions. The degree to which users are incorporated in ISI decision-making (e.g., Wijnhoven <i>et al.</i> , 2006)
190	User resistance. The users' attitude and possible resistance to change (e.g., Alaranta and Kautz, 2012)
191	User skills. The users' abilities to use the post-M&A IS (e.g., Alaranta and Kautz, 2012)
192	User training and support. Means for enabling users to transition to the combined IS (e.g., Alaranta and Kautz, 2012)
193	Vague or changing requirements. Ambiguous or recurrently respecified demands on ISI (e.g., Alaranta and Kautz, 2012)
194	Vendor carve-out strategy. The approach by the vendor to carve out the unit being transacted (e.g., Böhm <i>et al.</i> , 2011)
195	Vendor's knowledge. The competence of the suppliers of the merged organization in the selected technologies (e.g., Alaranta and Kautz, 2012)

Table B2 Dependent master variables.

#	Dependent master variable
1	Alignment between processes. Fit between the choice of organizational integration process and ISI process (e.g., Baker and Niederman, 2014)
2	Avoidance of M&A problems. The degree to which the IS function manages to avert obstacles in the integration process (e.g., Stylianou <i>et al.</i> , 1996)
3	Capability preservation. The extent to which unique and valuable capabilities in the target are preserved post-M&A (e.g., Henningson and Kettinger, 2016)
4	Cost reduction. Post-M&A cost efficiency (e.g., Holm-Larsen, 2005)
5	Digital resource redeployment. The extent to which the acquirer's software is implemented in the target after the acquisition (e.g., Du, 2015)
6	Enterprise integration. The integration of disparate information systems operated by the companies involved (e.g., Schonewille and Bouwman, 2012)
7	Exploitation of M&A opportunities. The extent to which ISI enables realization of M&A objectives (e.g., Stylianou <i>et al.</i> , 1996)
8	Growth opportunities. New possibilities to extend business enabled by the M&A (e.g., Holm-Larsen, 2005)
9	Integrated systems quality. IS and end-user assessment of the quality of the post-M&A IS in the combined organization (e.g., Stylianou <i>et al.</i> , 1996)
10	Integration approach. A composite construct including include absorption versus best-of-breed, phasing versus quick wins, investment versus expedience and the degree of integration required (e.g., Robertson and Powell, 2001)
11	Integration architecture. The decision on architecture to implement ISI (e.g., Henningson and Carlsson, 2011)
12	IS credibility. The organizational perception of the IS function's abilities (e.g., Al Suliman, 2015)
13	IS performance. How well the post-M&A IS function supports the combined organization (e.g., Robbins and Stylianou, 1999)
14	IS quality. The malfunction of computer systems that occurs as a result of a disagreement between the components involved in the ISI (e.g., Kim <i>et al.</i> , 2005)
15	IS security culture. The behavior, values and assumptions, which ensure information security (e.g., Dhillon <i>et al.</i> , 2016)
16	IS staff. Demoralization and loss of able employees in the IS function (e.g., McKiernan and Merali, 1995)
17	IS structure. The configuration of the IS function and the locus of responsibility for IS management decision (e.g., Mehta and Hirschheim, 2007)
18	IS synergies. Synergies, including reduced cost, realized by consolidating the IS of the merging companies (e.g., Johnston and Yetton, 1996)
19	IS transaction success. The resources needed to carve out and integrate IS in an organizational transaction (e.g., Böhm <i>et al.</i> , 2011)
20	IS-business relation. The partnership between business and IS managers in the combined organization (e.g., Main and Short, 1989)



Table B2 Continued

#	Dependent master variable
21	ISI area – Offering. The extent to which the particular business area of offering (product) is subject to technological integration (e.g., Toppenberg, 2015)
22	ISI area – R&D. The extent to which the particular business area of R&D is integrated through IS (e.g., Toppenberg, 2015)
23	ISI capabilities. The post-M&A ability for ISI in subsequent M&As (e.g., Henningson and Øhrgaard, 2016)
24	ISI cost. The resource required to complete ISI (e.g., Holm-Larsen, 2005)
25	ISI degree. The decision on level to which IS are integrated in the M&A (e.g., Weber and Pliskin, 1996)
26	ISI effectiveness. How well the ISI supports the M&A project (e.g., Linder, 1989)
27	ISI efficiency. How well time, personnel and financial resources were used in the ISI (e.g., Morsell <i>et al.</i> , 2009)
28	ISI levels. Denotes the levels of systems to be integrated, distinguishing between infrastructural, transactional, informational and strategic IS (e.g., Henningson and Carlsson, 2011)
29	ISI method. The decision on approach used to combine the IS of the merging organization (e.g., Wijnhoven <i>et al.</i> , 2006)
30	ISI process quality. IS and end-user assessment of the process by which IS were integrated (e.g., Stylianou <i>et al.</i> , 1996)
31	ISI strategy. A combination of the standardization and centralization in IS aimed at during the M&A (e.g., Giacomazzi <i>et al.</i> , 1997)
32	ISI success. A general construct representing the extent to which ISI met objectives and requirements (e.g., Al Suliman, 2015)
33	ISI time. Time used to complete the combination of IS (e.g., Garcia-Canal <i>et al.</i> , 2013)
34	IT infrastructure. Characteristics of the post-M&A IT assets that enable or hinder organizational performance (e.g., McKiernan and Merali, 1995)
35	IT spending. The combined firm's IT intensity ratio after the M&A (e.g., Glazar-Stavnicky, 2016)
36	Knowledge coverage. As opposed to knowledge gaps, the consistency of knowledge creation, knowledge storage/retrieval, knowledge transfer and knowledge application (e.g., Alaranta and Martela, 2012)
37	M&A success. A general construct indicating the extent to which ISI supports the M&A ambitions (e.g., Williams <i>et al.</i> , 2015)
38	M&A synergies. The post-M&A combination effects including economies of scale and scope, process improvement, growth and renewal (e.g., Busquets, 2015)
39	Migration scenario. Detailed plans for how to combine IS that includes systems selection and vendor offerings to realize them (e.g., Steininger <i>et al.</i> , 2016b)
40	Operating performance. Cost efficiency and profitability of the merged organization (e.g., Parada <i>et al.</i> , 2009)

Table B2 Continued

#	Dependent master variable
41	Organizational integration. The extent to which the combined organization functions as a whole (e.g., Mehta and Hirschheim, 2007)
42	Organizational performance. The long-term performance of the merged organization, including the sustained return on assets (ROA) (e.g., Tafti, 2009)
43	Post-M&A alignment. The level of business-IT alignment after the ISI (e.g., McKiernan and Merali, 1995)
44	Post-M&A IS strategy. The IS strategy employed after the M&A by the combined organization (e.g., Gregory <i>et al.</i> , 2012)
45	Post-M&A IS success. Drawing on IS success, the success of IS in the post-M&A organization (e.g., Steininger, 2016a)
46	Sales increase. Revenue enhancements post-M&A (e.g., Holm-Larsen, 2005)
47	Spirit (non-IS). The morale of general employees (not IS) (e.g., Henningson <i>et al.</i> , 2007)
48	Stock-market reaction. The effect on the share price, commonly measured as cumulative abnormal returns (CAR) at the time of M&A announcement (e.g., Tanriverdi and Uysal, 2011)
49	Sustainable growth. The ability for continued organic and acquisition-based growth (e.g., Toppenberg <i>et al.</i> , 2015)
50	Systems functionality. The final functionality of the integrated IS (e.g., Vieru and Rivard, 2014)
51	Target's efficiency improvement. The average cost per case-mix-adjusted discharges in a hospital, before and after an acquisition (e.g., Du, 2015)
52	Target's quality improvements. The quality of care delivery process based on 20 process-of-care quality indicators, before and after an acquisition (e.g., Du, 2015)
53	User acceptance and satisfaction. As opposed to user resistance, the extent to which users welcome and support the ISI scenario (e.g., Vieru and Trudel, 2013)

Appendix C: Dependent and independent variables in the review

Dependent variables

We identify 53 different dependent variables (Table C1). Following Lacity *et al.* (2010, 2011, 2016), we distinguish between decision and outcome variables. Decision variables refer to the options to implement ISI. Outcome variables capture the various costs and benefits contingent on the ISI project. Twenty-seven percent of the findings refer to relationships that predict the choice of ISI decisions. Seventy-three percent of relationships concern the outcomes of ISI decisions.

**Table C1** Dependent variables used in research on ISI in mergers.

<i>ISI decision variables</i>	<i>Freq.</i>	<i>Comment</i>
ISI method	79	ISI research investigates: <i>what</i> to integrate and <i>how</i> to integrate (Henningson and Kettinger, 2016). ^a The <i>what</i> -question of ISI is primarily investigated with variables relating to the degree of integration (Giacomazzi <i>et al.</i> , 1997; Wijnhoven <i>et al.</i> , 2006), the digital resource redeployment (Du, 2015) and the integration area (Brown <i>et al.</i> , 2003; Eckert <i>et al.</i> , 2012). The degree of integration refers to the continuum between separated independent IS and fully integrated IS. The digital resource redeployment captures the extent to which software from one organization is implemented in the other organization (Du, 2015). The integration area includes variables referring to specific IS areas that are subject to integration efforts, including applications, infrastructural technology, strategies, personnel and practices
Degree of ISI	30	
Digital resource redeployment	17	
Enterprise integration	15	
ISI strategy	10	
ISI levels	5	
Integration approach	3	
Post-M&A IS strategy	3	
Migration scenario	3	
Integration architecture	2	
Systems functionality	1	
ISI area – R&D	1	
ISI area – offering	1	
Alignment between processes	1	
IS structure	1	
Total ISI decision variables	172	
<i>ISI outcome variables</i>	<i>Freq.</i>	<i>Comment</i>
<i>ISI project</i>		
ISI success	49	In this category, variables is directly associated with the ISI project. Some articles use a broadly defined ISI success variable (Stylianou <i>et al.</i> , 1996), some focus on specific aspects of the project, including time, cost and user satisfaction (Unkan and Thönssen, 2015) and others investigate the IS synergies created by the integration project (Johnston and Yetton, 1996)
ISI process quality	32	
Integrated systems quality	32	
ISI effectiveness	20	
ISI time	18	
IS synergies	11	
ISI efficiency	10	
ISI cost	9	
User acceptance and satisfaction	5	
IS transaction success	1	
<i>M&A project</i>		
M&A synergies	50	A broader perspective on outcome investigates the outcome of ISI in terms of the impact on the integration project as a whole. Here, beyond the frequently employed conceptualization of ISI success, both the impact on general M&A synergies (for example, economies of scale or scope) enabled by ISI, and capability destruction contingent on IS redeployment are studied (Myers, 2008; Henningson <i>et al.</i> , 2016)
M&A success	25	
Exploit M&A opportunities	16	
Avoid M&A problems	16	
Sales increase	1	
Cost reduction	1	
Capability preservation	1	
Growth opportunities	1	
<i>IS organization</i>		
IS quality	18	Research on the effects on the long-term impact on the IS organization beyond the specific M&A project focus on either the long-term impact on the IS organization or on the organization as a whole. Variables used to investigate the performance of the IS organization include general IS capabilities (Robbins and Stylianou, 1999), IT infrastructure (McKiernan and Merali, 1995), IS employee morale (LeFave <i>et al.</i> , 2008) and the development of capabilities to conduct subsequent ISI projects (Henningson and Øhrgaard, 2016)
IS staff	10	
IT infrastructure	9	
Knowledge coverage	7	
IT spending	7	
ISI capabilities	6	
IS credibility	4	
Post-M&A IS success	4	
IS–business relation	3	
IS performance	2	
IS security culture	2	
Post-M&A alignment	1	



Table C1 Continued

<i>ISI outcome variables</i>	<i>Freq.</i>	<i>Comment</i>
<i>Org. performance</i>		
Organizational performance	20	Dependent variables to capture the long-term effects on the organization include operating performance (Tafti, 2009) and the potential to sustain a growth strategy (Toppenberg <i>et al.</i> , 2015)
Stock-market reaction	15	
Sustainable growth	14	
Operating performance	13	
Target's efficiency improvement	6	
Target's quality improvements	6	
Spirit (non-IS)	1	
Organizational integration	1	
Total ISI outcome variables	447	

The 'what,' 'how' and 'when' of ISI in M&A was the subject of a presentation by Carol Brown given in conjunction with ECIS 2011 in Helsinki

Independent variables

Our investigation identified 195 independent variables in the extant literature on ISI. To facilitate the analysis and discussion of this number of variables, we group them into 12 clusters and sort them by frequency of use (Table C2).



Table C2 Independent variables.

<i>Variable</i>	<i>Freq.</i>	<i>Comment</i>
ISI implementation	12	The most frequently studied category of variables includes those relating to how ISI methods are implemented.
Changes in workforce size	11	These variables measure how organizations manage ISI. Within this category, 37 independent variables have been studied a total of 117 times. The most frequently studied aspects are changes in workforce size (examined 12 times), IT communication and IS employee morale during the implementation (examined 11 times). Changes in workforce size include both increases and decreases in staffing to implement ISI (Stylianou <i>et al.</i> , 1996). IT communication refers to the communication activities between the IT function and other organizational functions (Morsell <i>et al.</i> , 2009). IS employee morale includes the spirit and beliefs in the merger among IS employees (Stylianou <i>et al.</i> , 1996)
User training and support	10	
Changes in policies and procedures	6	Other frequently studied aspects of the implementation process include user training and support (examined ten times) and leadership in ISI project, changes in policies and procedures and decreases in IS staff compensation (each examined six times) (Brown <i>et al.</i> , 2003; Kim <i>et al.</i> , 2005; Vaniya <i>et al.</i> , 2013)
Decreases in IS staff compensation	6	The implementation category also includes variables relating to the properties of the four ISI methods. These have distinct properties that make them more or less effective contingent on the priorities and constraints, which often result in suboptimal outcomes. The method attributes of complexity and cost have been studied four times each.
IT leadership in integration project	6	Speed and novelty have been studied twice each (Eckert <i>et al.</i> , 2012; Henningsson and Kettinger, 2016). Effort, the overall resources needed to complete an ISI method, has been studied once (Eckert <i>et al.</i> , 2012)
ISI method complexity	4	
ISI method cost	4	
End-user involvement in ISI	4	
Inclusion of key IT staff in ex-post integration	3	
ISI method speed	3	
ISI method novelty	3	
ISI method effort	1	
ISI implementation speed	2	
Development and testing	2	
Leverage of existing teams	2	
Relocation cost minimization	2	
Leverage of increased purchasing power	2	
User resistance	2	
Burning desire	2	
Retention packages	2	
Vague or changing requirements	2	
Joint sourcing	2	
Realistic budget and targets	1	
Division of integration task	1	
Use of prepackaged solutions	1	
Ex-post evaluation	1	
IT culture conflict management	1	
Organizational change management	1	
Reporting and documentation	1	
Slow response to requirements changes	1	
Systems novelty for users	1	
Boundary consolidation	1	
Information security management	1	
ISI process	1	
Vendor's knowledge	1	
<i>Category total</i>	117	

Table C2 Continued

Variable	Freq.	Comment
<i>Within-firm IS conditions</i>		
IS–business collaboration in planning	14	The 30 variables within the category of within-firm IS conditions capture variables pertaining to IS preconditions beyond ISI capabilities and IT infrastructure. These have been examined 102 times. This category shows that there are many characteristics of the M&A parties' IS that influence the ISI project (Alaranta and Kautz, 2012). The most frequently studied IS condition is the level of annual IT investment (Tafii, 2009), which has been investigated ten times
IT investment at target	10	
Prior ISI experience	8	
Top management support	8	
Level of data sharing pre-M&A	7	
ISI proactivity (vs reactivity)	7	
Communication of M&A activities to IS	5	
IS perception	5	
Attention to IT	3	
IT investment in acquirer	3	
Habits and practice	3	Research has also examined prior ISI experience (Mehta and Hirschheim, 2007; Koveala and Skok, 2012) eight times and the level of premerger data sharing (Robbins and Stylianou, 1999) seven times. In addition, research has investigated the impact of premerger habits and practices (Vieru et al., 2016), governance mode and user skills (Du, 2015)
IT governance mode	3	
User skills	3	
Outsourcing	2	
IS planning	2	
Geographical distribution of IS/IT	2	
Acquirer's IT capability	2	
Related experiences	2	
Preexisting business-IT relations	2	
Top management steering	1	
Systems importance for business	1	Also included in this category are a set of variables that describe how the relationships between business and IT in the two parties to the M&A affect ISI. IS–business collaboration in planning (Morsell et al., 2009) has been studied 14 times. The effect of top management support (Kim et al., 2005) has been studied eight times and ISI proactivity in the merger project seven times. The communication of M&A activities to ISI (Morsell et al., 2009) has been studied five times. The large number of studies that focus on the interaction between business and IT signals the importance of nurturing a collaborative approach to ISI
Business understanding of IS development	1	
Pre-M&A alignment	1	
Business and IT alignment preconditions	1	
IS staff motivation	1	
Cognitive sunk costs	1	
IS strategy	1	
Basic conditions	1	
IS performance	1	
Target's IT capability	1	
<i>Category total</i>	102	



Table C2 Continued

Variable	Freq.	Comment
<i>M&A context</i>		
M&A motivation	10	The ISI project is a component within the overall M&A project. How the general M&A project influences ISI has been studied 68 times through 21 variables. Within this category of variables, the most frequently studied variables are merger motivation and organizational merger planning, which have each been studied ten times. Merger motivation refers to the fundamental business reasons driving the transaction (Myers, 2008). Organizational merger planning refers to the quality of planning, where insufficient planning is assumed to spill over onto the ISI project (Robbins and Stylianou, 1999)
Organizational M&A planning	10	
Power and politics	7	
Culture clashes	7	
Org integration objectives	6	
M&A type (hostile, etc.)	4	
Stakeholder collaboration	4	Other variables that are frequently studied in this category include power and politics (the extent of strategizing for integration cost
Integration cost	3	control of the merger process) and culture clashes (the extent of cultural inconsistencies) (Weber and Pliskin, 1996). Both have been studied seven times. The organizational integration objectives variable is examined six
M&A context (general)	2	times. This variable is typically conceptualized employing the Haspeslagh and Jemison (1991) typology of M&A
Leadership	2	integration approaches, distinguishing between absorption, symbiosis, preservation and holding approaches (Henningsson and Carlsson, 2011)
Defined business strategy	2	
Social context	2	
M&A frequency	1	
Same IT-user organization	1	
Experience variation	1	
Business analysis	1	
Search for similar operational logic	1	
Expansion (shrinkage) of target	1	
HR management	1	
Acquiring from another MBO	1	
Acquiring another MBO	1	
<i>Category total</i>	68	
<i>ISI design</i>		
Risk management	9	The variable category of ISI diagnosing captures various aspects of how the M&A organization designs its approach to ISI. This has been studied 64 times through 20 variables. The most frequently studied variables in this category are risk management (Unkan and Thönssen, 2015; Henningsson and Kettinger, 2016) and collaboration dynamics (LeFave et al., 2008; Alaranta and Martela, 2012) that are studied nine and eight times, respectively
Collaboration dynamics	8	
Business-based priorities	7	
Political considerations	6	
System size/complexity	6	The ISI design variables also include references to how business priorities drive ISI decision-making (Kovela and Skok, 2012), which are examined seven times. The extent to which political considerations and considerations about systems complexities (Stylianou et al., 1996) influence ISI decision-making have been investigated six times each. The strategic integration objectives assigned to the IS function (Wijnhoven et al., 2006) has been investigated five times
ISI objectives	5	
IS morale	3	
ISI speed	2	
Prioritization of customer-facing applications	2	
Cost focus	2	In addition, research has studied user involvement in ISI decisions, the structure of the decision process, and the presence of a comparative analysis and long-term vision, whether complexity is a decision criterion and whether the IS function is in charge of diagnosing the approach to ISI. Taken together, the variables in the category of ISI diagnosis signal the importance for the output of the task of the many ways in which the task is implemented. This research shows the importance of setting priorities in M&A ISI projects because many different outcomes compete for priority in decision-making. In general, ISI decisions are suboptimal, contingent on multiple trade-offs
User involvement in ISI decisions	2	
Decision process	2	
Comparative analysis	2	

Table C2 Continued

Variable	Freq.	Comment
Long-term integration vision	2	
Aligned post-M&A state	1	
Alignment of integration objectives	1	
Short-term considerations	1	
Common ISI goals	1	
Complexity a criterion for ISI decision	1	
IT in charge	1	
Category total	64	
<i>IT infrastructure</i>		
Geographical distribution of IT	11	The ten variables comprising the IT infrastructure category, which refer to the properties of the premerger IT infrastructure that affect integration decisions or their outcomes, have been studied 45 times in relation to ISI in M&As. Geographical distribution of IT (Stylianou et al., 1996; Robbins and Stylianou, 1999), which has been studied 11 times, is the most frequently studied variable in this category. It refers to whether IT hardware is distributed across multiple locations. This variable was first studied in the 1990s. We speculate that it has gradually decreased in importance as network technologies have matured
IT flexibility	8	
IT standardization	7	
IT extensiveness	5	
Existing IS-IT qualities	5	
IT infrastructure	3	
Modularity	2	Also in the IT infrastructure category, the master variable of IT flexibility draws on Duncan's (1995) definition of IT infrastructure flexibility. IT flexibility and related concepts, including scalability and other loosely defined references to infrastructures that do not permit certain actions (Wijnhoven et al., 2006; Vaniya et al., 2013), have been studied eight times. Other frequently studied aspects of the premerger IT infrastructure include IT standardization and IT extensiveness (Du, 2015) that have been studied seven and five times, respectively. The many variables investigated within the IT infrastructure category signals the importance of considering the capacities of the IT assets that can take several years to develop
Cost-efficient ICT	2	
Enterprise systems (presence of)	1	
Language support	1	
Category total	45	
<i>Organizational characteristics</i>		
M&A experience	9	The organizational context, specifically, different within-organizational characteristics of the two M&A organizations, has been studied 43 times through 22 different variables. Most frequently, research has studied how previous merger experiences (Stylianou et al., 1996) and premerger organizational performance (Du, 2015), which have been examined nine and eight times, respectively, affect ISI. Other related variables include organizational structure (examined four times) and geographical distribution (examined three times). Taken together, the variables in this category contribute to understanding how the wider organizational context influences ISI
Pre-M&A organizational performance	8	
Organizational structure	4	
Geographical distribution	3	
Organizational infrastructure	2	
Need for organizational transformation	1	
Professional approach	1	
Operational uniformity	1	
State of mind	1	
Company scale	1	
Planning style	1	
Company language	1	
Corporate culture	1	
Teaching status	1	
Target size	1	
Target age	1	
Financial slack – target	1	
High profitability and high-growth firm	1	
High profitability and low-growth firm	1	
Low profitability and high-growth firm	1	



Table C2 Continued

Variable	Freq.	Comment
Management style	1	
Level of location integration	1	
Total	43	
<i>IS relational</i>		
Application and IT compatibility	14	The category labeled IS relational refers to variables covering the relationship between the pre-M&A IS assets and practices of the two parties. The importance of this relationship is highlighted by the pioneering research in the 1990s (Buck-Lew et al., 1992; Merali and McKiernan, 1993). In this category, nine variables frame different aspects of the relationships
IS configuration fit	7	
IS organizational compatibility	5	
Relative IT capability	5	
IS strategy compatibility	3	The most frequently studied construct is application and IT compatibility, referring to the compatibility of technical platforms, programming languages and software (Chang et al., 2014), which is examined 14 times. IS configuration fit, which is based on the MIT 90s organizational configuration schema (Scott Morton, 1991) has been investigated seven times (Johnston and Yetton, 1996). IS organizational compatibility and the organizational structures and cultures within the parties' IS functions (Lin and Chao, 2008) have been examined six and five times, respectively.
Vendor carve-out strategy	1	This category also includes relative IT capability (Du, 2015; Tanriverdi and Uysal, 2015), which treats the difference between IT capabilities as a capability gap. This has been examined five times
Category total	40	
<i>ISI decision</i>		
ISI method	13	Variables within the category of ISI decision are treated as both independent and dependent variables in different studies. As an independent variable, it has been studied 35 times. When used as an independent variable, researchers investigate how ISI decisions affect ISI outcomes (Giacomazzi et al., 1997; Robertson and Powell, 2001). Specifically, this research focuses on how the choice of integration method or methods affects ISI outcomes. This has been studied 13 times
Data integration	8	
Alignment of integration processes	5	
Degree of ISI	4	
Digital resource redeployment	2	
ISI area – personnel	2	Also in the ISI category, alignment between organizational integration and ISI (Johnston and Yetton, 1996; Baker and Niederman, 2014) have each been studied five times. The basic argument is that post-M&A business and IT strategic alignment is a prerequisite for realizing the business value of IT, and, by extension, alignment would also be an important contributor to IT-based value creation in M&As. The effects of other ISI decision variables on ISI outcomes have rarely been studied
ISI area – application	1	
IS culture integration	1	
Category total	36	
<i>ISI capabilities</i>		
Use of external resources	11	The capabilities required to manage ISI have been studied 33 times. This research takes four forms. The first defines EA capabilities as unique to the M&A context (Kim et al., 2005; Yetton et al., 2013). The second treats ISI capabilities generally and investigates their applicability in a M&A context (Tanriverdi and Uysal, 2011, 2015). The third examines supportive general capabilities, including EA capabilities and project management capabilities (Labusch et al., 2013; Toppenberg et al., 2015)
EA capability	6	Finally, the fourth form investigates external capabilities, typically sourced through consultants (Sumi and Tsuruoka, 2002; Henningson and Øhrgaard, 2016). The use of external capabilities and the effects of EA capabilities have been studied eleven and six times, respectively. All four forms of research into the effects of ISI capabilities investigate high-level capabilities that generally say more about the different subtasks of M&A ISI challenges than they explain what makes some organizations better than others at resolving M&A ISI challenges
ISI skill	3	
Implementation capability	2	
Cross-business IT integration capability	2	
Project management (of ISI) skills	2	
ISI team	2	
Boundary spanning versatility	1	
Diagnostic capability	1	
ISI expertise	1	
ISI routines	1	
ISI capability	1	
Category total	33	
<i>ISI planning</i>		

Table C2 Continued

Variable	Freq.	Comment
Discovery (vs consistency)	10	The variable category of ISI planning captures various aspects of how the M&A organization develops the plan for ISI. This has been studied 32 times through 12 variables. Two of these variables have received substantial attention.
Quality of ISI planning	5	The element of discovery in the planning process, defined as the inclusion of emergent variations in ISI plans during the ISI project (Busquets, 2015), has been studied ten times. The overall quality of ISI planning (Morsell et al., 2009) has been studied five times
Inclusion of IT staff	4	To a lesser extent, research has also examined the inclusion of IS staff in the planning process (Alaranta and Henningson, 2008), the use of formal decision criteria (LeFave et al., 2008) and how decision authority is structured during the planning process (Brown et al., 2003; Henningson et al., 2016). Overall, the ISI planning variables relate to how the merging organizations address the complexity and lack of information in ISI decision-making. Two strategic approaches can be discerned among the independent variables: broad inclusion of individuals, each of whom brings a component of understanding to collective decision-making, and emergent decision-making as the picture becomes clearer
Use of decision criteria	3	
Distributed decision authority	2	
Project governance approach	2	
Alignment of vendor and acquirer IT transaction strategies	1	
Comprehensiveness	1	
Focus	1	
Flow	1	
Formalization	1	
Credible deadlines	1	
Category total	32	
<i>External environment</i>		
Time pressure	10	The category of environmental influence captures the sources of influence outside the merging organizations. Among the variables capturing environmental influences, time pressure (Robertson and Powell, 2001; Mehta and Hirschheim, 2007), has been studied ten times, corroborating the emerging understanding that ISI is a search for the best possible solution given the contextual constraints, rather than a search for the optimal solution. Research has also studied industry influence seven times, focusing on how the dynamics (speed of change and possibilities for synergies) influence ISI decisions (Jain and Ramesh, 2015; Toppenberg et al., 2015)
Industry characteristics	7	
Legislation	1	
Shareholder return	1	
Economic climate	1	
Category total	20	
<i>Pre-M&A relation</i>		
Organizational uniformity	6	A second group of organizational context variables includes the pre-M&A relationships between the two organizations. This category of variables, examined 19 times, captures differences and similarities between the organizations and the consequences for ISI. In this category, organizational uniformity (Eckert et al., 2012; Vieru and Rivard, 2015) has been studied six times. The effect of whether or not the parties in the M&A are classified as belonging to the same industries (Tanriverdi and Uysal, 2015) has been studied three times. Other variables, including geographical relatedness, organizational process fit and the presence of competing business models (Giacomazzi et al., 1997; Seddon et al., 2010), have each been studied twice
Industry relatedness	3	
Geographical relatedness	2	
Organizational process fit	2	
Competing business models	2	
Relative size	1	
Differences in management needs	1	
Organizational competency fit	1	
For-profit status difference	1	
Category total	19	
Total	619	



Appendix D: Relational details

See Table D1.

Table D1 Relations between independent and dependent variables.

	<i>ISI decisions</i>					<i>ISI outcomes</i>					<i>Tot</i>
	<i>0</i>	<i>+ 1</i>	<i>- 1</i>	<i>M</i>	<i>Sub tot</i>	<i>0</i>	<i>+ 1</i>	<i>- 1</i>	<i>M</i>	<i>Sub tot</i>	
<i>ISI implementation</i>											
Changes in workforce size	0	0	0	0	0	10	0	2	0	12 (0)	12
IT communication	0	0	0	2	2	0	9	0	0	9 (++)	11
IS employee morale	0	0	0	0	0	7	2	2	0	11 (0)	11
User training and support	0	0	0	0	0	2	8	0	0	10 (+)	10
Changes in policies and procedures	0	0	0	0	0	5	0	1	0	6 (00)	6
Decreases in IS staff compensation	0	0	0	0	0	5	0	1	0	6 (00)	6
IT leadership in integration project	0	0	0	0	0	0	6	0	0	6 (++)	6
ISI method complexity	0	0	0	4	4	0	0	0	0	0	4
ISI method cost	0	0	0	4	4	0	0	0	0	0	4
End-user involvement in ISI	0	0	0	0	0	1	3	0	0	4	4
Inclusion of key IT staff in ex-post integration	0	0	0	0	0	0	3	0	0	3	3
ISI method speed	0	0	0	3	3	0	0	0	0	0	3
ISI method novelty	0	0	0	0	0	0	0	3	0	3	3
ISI method effort	0	0	0	1	1	0	0	0	0	0	1
ISI implementation speed	0	0	0	0	0	0	1	1	0	2	2
Development and testing	0	0	0	0	0	0	2	0	0	2	2
Leverage of existing teams	0	0	0	0	0	0	2	0	0	2	2
Relocation cost minimization	0	0	0	0	0	0	2	0	0	2	2
Leverage of increased purchasing power	0	0	0	0	0	0	2	0	0	2	2
User resistance	0	0	0	2	2	0	0	0	0	0	2
Burning desire	0	0	0	0	0	0	2	0	0	2	2
Retention packages	0	0	0	0	0	0	2	0	0	2	2
Vague or changing requirements	0	0	0	0	0	0	0	2	0	2	2
Joint sourcing	0	0	0	2	2	0	0	0	0	0	2
Realistic budget and targets	0	0	0	0	0	0	1	0	0	1	1
Division of integration task	0	0	0	0	0	0	1	0	0	1	1
Use of prepackaged solutions	0	0	0	0	0	0	1	0	0	1	1
Ex-post evaluation	0	0	0	0	0	0	1	0	0	1	1
IT culture conflict management	0	0	0	0	0	0	1	0	0	1	1
Organizational change management	0	0	0	0	0	0	1	0	0	1	1
Reporting and documentation	0	0	0	0	0	0	1	0	0	1	1
Slow response to requirements changes	0	0	0	0	0	0	0	1	0	1	1
Systems novelty for users	0	0	0	0	0	0	0	1	0	1	1
Boundary consolidation	0	0	0	1	1	0	0	0	0	0	1
Information security management	0	0	0	0	0	0	1	0	0	1	1
ISI process	0	0	0	0	0	0	1	0	0	1	1
Vendors knowledge	0	0	0	0	0	0	1	0	0	1	1
Category total	0	0	0	19	19	30	54	14	0	98	117
<i>Within-firm IS conditions</i>											
IS–business collaboration in planning	0	0	0	0	0	4	10	0	0	14 (+)	14
IT investment at target	0	0	1	0	1	7	2	0	0	9 (0)	10
Prior ISI experience	0	0	0	4	4	0	4	0	0	4	8
Top management support	0	0	0	2	2	1	5	0	0	6 (++)	8
Level of data sharing pre-M&A	0	0	0	0	0	5	2	0	0	7 (0)	7
ISI proactivity (vs reactivity)	0	0	0	2	2	0	5	0	0	5 (++)	7
Communication of M&A activities to IS	0	0	0	0	0	1	4	0	0	5 (+)	5
IS perception	0	0	0	1	1	0	4	0	0	4	5
Attention to IT	0	0	0	0	0	0	3	0	0	3	3
IT investment in acquirer	0	0	0	0	0	0	2	1	0	3	3
Habits and practice	0	0	0	1	1	0	0	2	0	2	3
IT governance mode	1	0	0	0	1	2	0	0	0	2	3
User skills	0	0	0	2	2	0	1	0	0	1	3



Table D1 Continued

	<i>ISI decisions</i>					<i>ISI outcomes</i>					
	<i>0</i>	<i>+ 1</i>	<i>- 1</i>	<i>M</i>	<i>Sub tot</i>	<i>0</i>	<i>+ 1</i>	<i>- 1</i>	<i>M</i>	<i>Sub tot</i>	<i>Tot</i>
Outsourcing	0	0	0	1	1	0	1	0	0	1	2
IS planning	0	0	0	0	0	0	1	1	0	2	2
Geographical distribution of IS/IT	0	0	0	0	0	0	2	0	0	2	2
Acquirer's IT capability	0	0	0	0	0	2	0	0	0	2	2
Related experiences	0	0	0	1	1	0	1	0	0	1	2
Preexisting business-IT relations	0	0	0	0	0	0	2	0	0	2	2
Top management steering	0	0	0	0	0	0	0	1	0	1	1
Systems importance for business	0	0	0	1	1	0	0	0	0	0	1
Business understanding of IS development	0	0	0	0	0	0	1	0	0	1	1
Pre-M&A alignment	0	0	0	1	1	0	0	0	0	0	1
Business and IT alignment preconditions	0	0	0	0	0	0	0	0	1	1	1
IS staff motivation	0	0	0	0	0	0	1	0	0	1	1
Cognitive sunk costs	0	0	0	0	0	0	0	1	0	1	1
IS strategy	0	0	0	1	1	0	0	0	0	0	1
Basic conditions	0	0	0	1	1	0	0	0	0	0	1
IS performance	0	0	0	0	0	0	1	0	0	1	1
Target's IT capability	0	0	0	0	0	0	0	1	0	1	1
Category total	1	0	1	18	20	22	52	7	1	82	102
<i>M&A context</i>											
M&A motivation	0	0	0	10	10 (MM)	0	0	0	0	0	10
Organizational M&A planning	0	0	0	0	0	2	7	1	0	10 (+)	10
Power and politics	0	0	0	5	5 (MM)	0	0	1	1	2	7
Culture clashes	1	0	0	2	3	0	0	4	0	4	7
Org integration objectives	0	0	0	5	5 (MM)	0	0	1	0	1	6
M&A type (hostile, etc.)	0	0	0	4	4	0	0	0	0	0	4
Stakeholder collaboration	0	0	0	0	0	0	4	0	0	4	4
Integration cost	0	0	0	0	0	2	0	1	0	3	3
M&A context (general)	0	0	0	2	2	0	0	0	0	0	2
Leadership	0	0	0	0	0	0	2	0	0	2	2
Defined business strategy	0	0	0	0	0	0	2	0	0	2	2
Social context	0	0	0	2	2	0	0	0	0	0	2
MA frequency	0	0	0	0	0	0	1	0	0	1	1
Same IT-user organization	0	0	0	1	1	0	0	0	0	0	1
Experience variation	0	0	0	0	0	0	0	0	1	1	1
Business analysis	0	0	0	0	0	0	1	0	0	1	1
Search for similar operational logic	0	0	0	1	1	0	0	0	0	0	1
Expansion (shrinkage) of target	1	0	0	0	1	0	0	0	0	0	1
HR management	0	0	0	0	0	0	1	0	0	1	1
Acquiring from another MBO	0	1	0	0	1	0	0	0	0	0	1
Acquiring another MBO	0	1	0	0	1	0	0	0	0	0	1
Category total	2	2	0	32	36	4	18	8	2	32	68
<i>ISI design</i>											
Risk management	0	0	0	1	1	0	8	0	0	8 (++)	9
Collaboration dynamics	0	0	0	1	1	0	7	0	0	7 (++)	8
Business-based priorities	0	0	0	0	0	4	3	0	0	7	7
Political considerations	0	0	0	0	0	5	0	1	0	6 (00)	6
System size/complexity	0	0	0	0	0	5	1	0	0	6 (00)	6
ISI objectives	0	0	0	5	5 (MM)	0	0	0	0	0	5
IS morale	0	0	0	2	2	0	1	0	0	1	3
ISI speed	0	0	0	1	1	0	0	0	1	1	2
Prioritization of customer-facing applications	0	0	0	0	0	0	2	0	0	2	2
Cost focus	0	0	0	2	2	0	0	0	0	0	2
User involvement in ISI decisions	0	0	0	1	1	0	0	1	0	1	2
Decision process	0	0	0	0	0	0	1	0	1	2	2
Comparative analysis	0	0	0	2	2	0	0	0	0	0	2
Long-term integration vision	0	0	0	0	0	0	2	0	0	2	2
Aligned post-M&A state	0	0	0	1	1	0	0	0	0	0	1



Table D1 Continued

	<i>ISI decisions</i>					<i>ISI outcomes</i>					
	<i>0</i>	<i>+ 1</i>	<i>- 1</i>	<i>M</i>	<i>Sub tot</i>	<i>0</i>	<i>+ 1</i>	<i>- 1</i>	<i>M</i>	<i>Sub tot</i>	<i>Tot</i>
Alignment of integration objectives	0	0	0	0	0	0	1	0	0	1	1
Short-term considerations	0	0	0	0	0	0	0	1	0	1	1
Common ISI goals	0	0	0	0	0	0	1	0	0	1	1
Complexity a criterion for ISI decision	0	0	0	0	0	0	1	0	0	1	1
IT in charge	0	0	0	0	0	0	0	1	0	1	1
Category total	0	0	0	16	16	14	28	4	2	48	64
<i>IT infrastructure</i>											
Geographical distribution of IT	0	0	1	1	2	5	1	3	0	9	11
IT flexibility	0	0	0	1	1	0	7	0	0	7 (++)	8
IT standardization	0	1	0	0	1	1	5	0	0	6 (++)	7
IT extensiveness	0	1	0	0	1	2	0	2	0	4	5
Existing IS-IT qualities	0	0	0	4	4	0	1	0	0	1	5
IT infrastructure	0	0	0	3	3	0	0	0	0	0	3
Modularity	0	0	0	0	0	0	2	0		2	2
Cost-efficient ICT	0	0	0	0	0	0	2	0	0	2	2
Enterprise systems (presence of)	0	0	0	0	0	0	1	0	0	1	1
Language support	0	0	0	1	1	0	0	0	0	0	1
Category total	0	2	1	10	13	8	19	5	0	32	45
<i>Organizational characteristics</i>											
M&A experience	0	1	0	1	2	3	4	0	0	7	9
Pre-M&A organizational performance	0	0	0	1	1	5	1	0	1	7 (00)	8
Organizational structure	0	0	0	3	3	0	0	1	0	1	4
Geographical distribution	0	0	0	2	2	0	0	1	0	1	3
Organizational infrastructure	0	0	0	2	2	0	0	0	0	0	2
Need for organizational transformation	0	0	0	1	1	0	0	0	0	0	1
Professional approach	0	0	0	1	1	0	0	0	0	0	1
Operational uniformity	0	0	0	1	1	0	0	0	0	0	1
State of mind	0	0	0	1	1	0	0	0	0	0	1
Company scale	0	0	0	1	1	0	0	0	0	0	1
Planning style	0	0	0	1	1	0	0	0	0	0	1
Company language	0	0	0	1	1	0	0	0	0	0	1
Corporate culture	0	0	0	1	1	0	0	0	0	0	1
Teaching status	1	0	0	0	1	0	0	0	0	0	1
Target size	1	0	0	0	1	0	0	0	0	0	1
Target age	0	1	0	0	1	0	0	0	0	0	1
Financial slack – target	0	0	1	0	1	0	0	0	0	0	1
High profitability and high-growth firm	0	0	0	0	0	0	1	0	0	1	1
High profitability and low-growth firm	0	0	0	0	0	1	0	0	0	1	1
Low profitability and high-growth firm	0	0	0	0	0	1	0	0	0	1	1
Management style	0	0	0	1	1	0	0	0	0	0	1
Level of location integration	0	0	0	1	1	0	0	0	0	0	1
Category total	2	2	1	19	24	10	6	2	1	19	43
<i>IS relational</i>											
Application and IT compatibility	0	0	0	1	1	3	10	0	0	13 (+)	14
IS configuration fit	0	0	0	2	2	0	5	0	0	5 (++)	7
IS organizational compatibility	0	0	0	1	1	0	4	0	0	4	5
Relative IT capability	0	1	0	0	1	2	1	1	0	4	5
IS strategy compatibility	0	0	0	1	1	0	2	0	0	2	3
Systems capability fit	0	0	0	0	0	2	0	0	0	2	2
Systems technology fit	0	0	0	0	0	1	1	0	0	2	2
Simplicity of integration	0	0	0	1	1	0	0	0	0	0	1
Vendor carve-out strategy	0	0	0	1	1	0	0	0	0	0	1
Category total	0	1	0	7	8	8	23	1	0	32	40
<i>ISI decision</i>											
ISI method	0	0	0	0	0	0	3	0	10	13 (+)	13
Data integration	0	0	0	0	0	3	5	0	0	8	8
Integration alignment	0	0	0	0	0	1	4	0	0	5 (+)	5



Table D1 Continued

	<i>ISI decisions</i>					<i>ISI outcomes</i>					
	<i>0</i>	<i>+ 1</i>	<i>- 1</i>	<i>M</i>	<i>Sub tot</i>	<i>0</i>	<i>+ 1</i>	<i>- 1</i>	<i>M</i>	<i>Sub tot</i>	<i>Tot</i>
Degree of ISI	0	0	0	0	0	0	1	3	0	4	4
Digital resource redeployment	0	0	0	0	0	0	2	0	0	2	2
ISI area personnel	0	0	0	0	0	0	2	0	0	2	2
ISI area application	0	0	0	0	0	0	1	0	0	1	1
IS culture integration	0	0	0	0	0	0	1	0	0	1	1
Category total	0	0	0	0	0	4	19	3	10	36	36
<i>ISI capabilities</i>											
Use of external resources	0	0	0	5	5 (MM)	0	4	1	1	6	11
EA capability	0	0	0	0	0	0	6	0	0	6 (++)	6
ISI skill	0	0	0	2	2	0	1	0	0	1	3
Implementation capability	0	0	0	0	0	0	2	0	0	2	2
Cross-business IT integration capability	0	0	0	0	0	0	2	0	0	2	2
Project management (of ISI) skills	0	0	0	1	1	0	1	0	0	1	2
ISI team	0	0	0	2	2	0	0	0	0	0	2
Boundary spanning versatility	0	0	0	0	0	0	1	0	0	1	1
Diagnostic capability	0	0	0	0	0	0	1	0	0	1	1
ISI expertise	0	0	0	0	0	0	1	0	0	1	1
ISI routines	0	0	0	0	0	0	1	0	0	1	1
ISI capability	0	0	0	0	0	0	1	0	0	1	1
Category total	0	0	0	10	10	0	21	1	1	23	33
<i>ISI planning</i>											
Discovery (vs consistency)	1	0	0	1	2	0	8	0	0	8 (++)	10
Quality of ISI planning	0	0	0	0	0	0	5	0	0	5 (++)	5
Inclusion of IT staff	0	0	0	1	1	0	3	0	0	3	4
Use of decision criteria	0	0	0	0	0	0	3	0	0	3	3
Distributed decision authority	0	0	0	0	0	0	2	0	0	2	2
Project governance approach	0	0	0	0	0	0	2	0	0	2	2
Alignment of vendor and acquirer IT transaction strategies	0	0	0	0	0	0	1	0	0	1	1
Comprehensiveness	0	0	0	1	1	0	0	0	0	0	1
Focus	0	0	0	1	1	0	0	0	0	0	1
Flow	0	0	0	1	1	0	0	0	0	0	1
Formalization	0	0	0	1	1	0	0	0	0	0	1
Credible deadlines	0	0	0	0	0	0	1	0	0	1	1
Category total	1	0	0	6	7	0	25	0	0	25	32
<i>External environment</i>											
Time pressure	0	0	0	5	5 (MM)	0	1	4	0	5 (-)	10
Industry characteristics	0	0	0	4	4	2	1	0	0	3	7
Legislation	0	0	0	1	1	0	0	0	0	0	1
Shareholder return	0	0	0	1	1	0	0	0	0	0	1
Economic climate	0	0	0	1	1	0	0	0	0	0	1
Category total	0	0	0	12	12	2	2	4	0	8	20
<i>Pre-M&A relation</i>											
Organizational uniformity	0	0	1	1	2	0	3	0	1	4	6
Industry relatedness	0	0	0	0	0	1	2	0	0	3	3
Geographical relatedness	1	0	0	1	2	0	0	0	0	0	2
Organizational process fit	0	0	0	0	0	2	0	0	0	2	2
Relative size	0	0	1	0	1	0	0	0	0	0	1
Competing business models	0	0	0	0	0	0	0	2	0	2	2
Differences in management needs	0	0	0	1	1	0	0	0	0	0	1
Organizational competency fit	0	0	0	0	0	1	0	0	0	1	1
For-profit status difference	1	0	0	0	1	0	0	0	0	0	1



Table D1 Continued

	<i>ISI decisions</i>					<i>ISI outcomes</i>					
	<i>0</i>	<i>+ 1</i>	<i>- 1</i>	<i>M</i>	<i>Sub tot</i>	<i>0</i>	<i>+ 1</i>	<i>- 1</i>	<i>M</i>	<i>Sub tot</i>	<i>Tot</i>
Category total	2	0	2	3	7	4	5	2	1	12	19
Grand total		0			172					447	619

Notes: This appendix details the relationships between independent variables and ISI decision and ISI outcome variables. Cells show the frequency with which a relationship was found to be a '+ 1' indicating a positive and significant relationship; '- 1' indicating a negative and significant relationship; '0' indicating a not significant relationship; 'M' indicating the independent variable mattered when operationalized as a categorical variable (see Table 2 for detailed explanations). The relationships that were examined at least five times are given in italics. The relationships that were examined at least 5 times and met the criteria for consistent results as described in the text are marked with (++) , (+) , (-) , (-) , (00) , (0) , (MM) , (M). No such markings within a shaded cell indicate lack of consistent findings per our criteria.